



BOARD OF TRUSTEES





Three goals. One team.

WRIGHT STATE UNIVERSITY

President's Report Board of Trustees Meeting February 16, 2024



WRIGHT STATE
UNIVERSITY

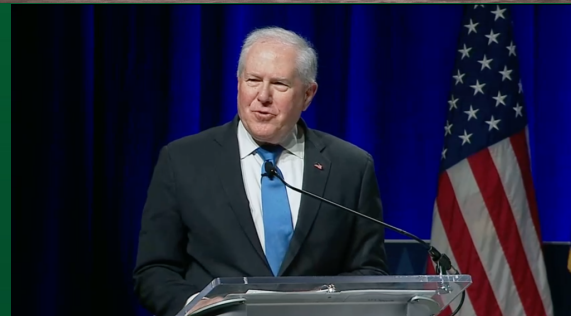


**DAYTON
BUSINESS JOURNAL**


**WRIGHT STATE
UNIVERSITY**



Space Force
Col Marqus Randall



Air Force Secretary Frank Kendall speaks during the opening session of AFA Warfare Symposium in

2/15/24, 11:08 AM
Aurora, Colo., on Feb. 12. Screenshot
New Commands, Ranks, and More: Big Changes for Air Force & Space Force
W. Allvin, Chief of Staff of the Air Force – Moderator: Lt. Gen. Bruce "Orville Wright, USAF (Ret.), AFA
President & CEO Photo by Mike Tsukamoto/Air & Space Forces Magazine

New Commands, Ranks, and More: Big Changes for Air Force & Space Force

Feb. 12, 2024 | By Tobias Naegele and Chris Gordon

This story was updated on Feb. 13, 2023, to clarify the status of Air Task Forces.



Air Force - AFLCMC
Lt Gen Donna Shipton



Friday, February 16

ROARING RALLY

Pep-rally food, music, games Men's and Women's basketball teams!

All are welcome

4–6:30 p.m.

Student Union Atrium

ALUMNI ACHIEVEMENT AWARDS*

6:30–9 p.m.

Student Union Apollo Room



Saturday, February 17

RAIDER ROUNDUP AND CHILI COOKOFF

Join the Raider community in celebrating homecoming with games, inflatables, food, music, and fun! Chili Cookoff is open to faculty, staff, and students.

All are welcome

11 a.m.–12:30 p.m.

McLin Gym

MEN'S BASKETBALL VS. ROBERT MORRIS

1 p.m.

Nutter Center

WOMEN'S BASKETBALL VS. NORTHERN KENTUCKY

4 p.m.

Nutter Center







WRIGHT STATE
UNIVERSITY



BOARD OF TRUSTEES





BoT Student Update

Madisyn Crabtree & Chris Jenkins
February 16, 2023



WRIGHT STATE
UNIVERSITY

Greek Life



WRIGHT STATE UNIVERSITY

CPH and the Womens Center



Let's Talk about Body Image

JANUARY 24, 2024 | 7 P.M. | SU APOLLO ROOM

Women's bodies are talked about more than the women who live in them. And we know that that is incredibly



Welcome to
2024 ACADEMY

NPC

Athletics



Homecoming



Omicron Delta Kappa



Student Government Association



SGA WRIGHT STATE UNIVERSITY UNIVERSITY CENTER FOR INTERNATIONAL EDUCATION WRIGHT STATE UNIVERSITY CULTURE AND IDENTITY CENTERS COMPASSIONFIRST A MINISTRY OF HEALING

WINTER COAT GIVEAWAY

SPRING SEMESTER

2/7/24

019 STUDENT UNION
CULTURE & IDENTITY CENTER EVENT SPACE
2:30 PM - 4:00 PM
OR UNTIL SUPPLIES LAST



Coats will be handed out for free with various size options for students. No proof of income needed.



The Wright State GUARDIAN News Worth Knowing

SGA: Pickleball Courts and Workload Policies

By Britin Frazey

Upcoming Events and News



GATSBY *Gala*

SATURDAY, FEBRUARY 17TH
7PM-10PM ~ APOLLO ROOM

DRESSING UP IS ENCOURAGED!

LIVE DJ, FREE FOOD, PHOTO
BOOTH, FREE GOODIES, AND
MORE!



Questions?

Comments?





BOARD OF TRUSTEES



WETLANDS: WONDERFUL, WILD, AND WRIGHT

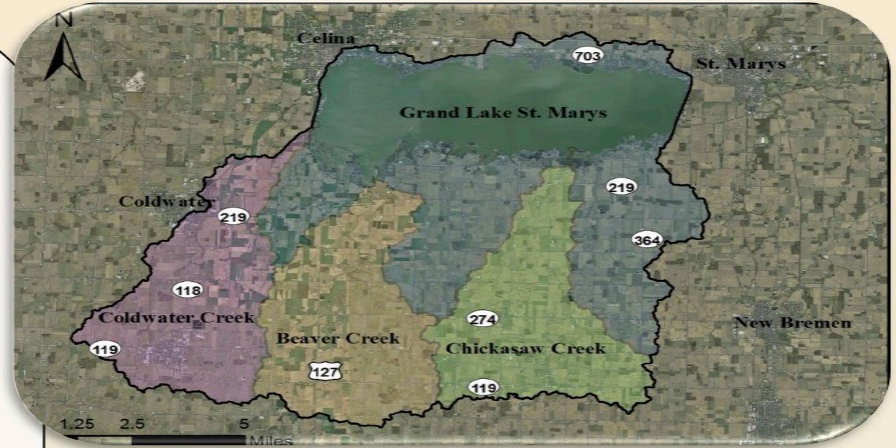


STEPHEN J. JACQUEMIN, THERESA A. DIRKSEN
WRIGHT STATE UNIVERSITY – LAKE CAMPUS
MERCER COUNTY COMMUNITY & ECONOMIC DEVELOPMENT



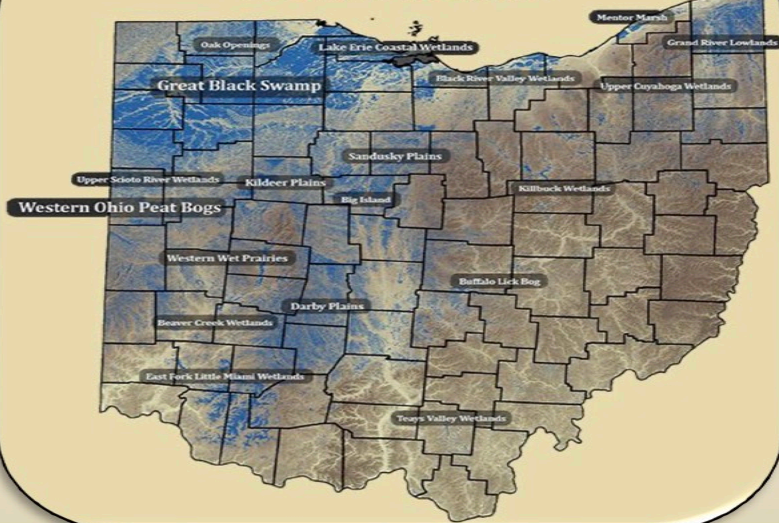
Grand Lake St. Marys Watershed

- Social, economic, and environmental value
- Located in Mercer / Auglaize Ohio
- Watershed is 241 km² (~60,000 acre) area - and is primarily agriculture
- Watershed has a series of small streams that drain into Grand Lake
- Large & shallow reservoir constructed 1830s
- Experiences high internal/external nutrient loading - at one point, streams and soils were in 75th + percentiles for nutrient levels
- In 1990's ranked in 99th percentile for HABS
- Tipping point reached in 2000s - watershed declared distressed in 2011
- Time for change



Loss and Restoration of Natural Habitats

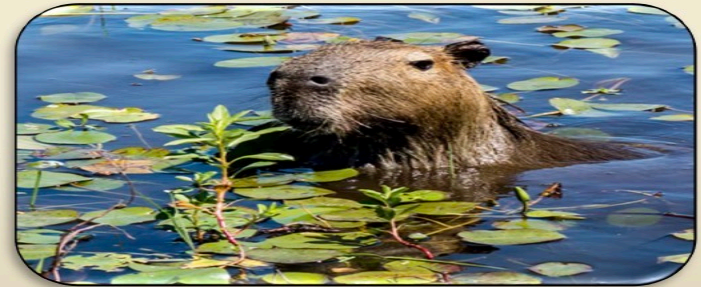
Pre-European Settlement Map of Ohio's Wetlands



Estimated that prior to settlement, the Grand Lake area was approximately 1/3 wetland habitat

Wetlands provide benefits for habitat, water treatment, drinking water, groundwater recharge, and more!

A decade ago - efforts were made to reverse these losses and bring back some of these natural wonders



Since then - Nearly a 1,000 acres of wetland habitat have been restored – led to an increase in biodiversity in the watershed and cleaner water for all

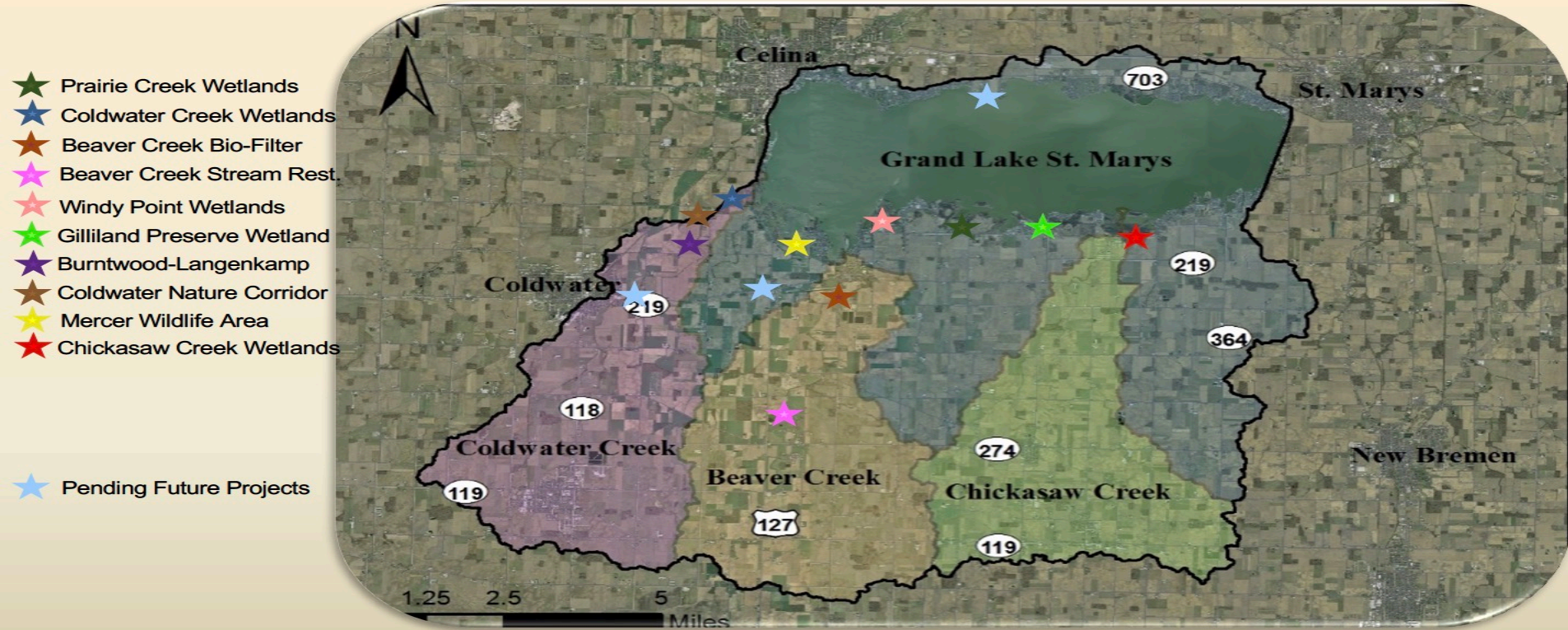
Wetlands- Just How Effective Are They in GLSM?

Nutrients

- Coldwater Creek is situated on 0.3% of the subwatershed area (30 ac)
- Operates about 55% of the days of year
- Reduces nutrient concentrations by anywhere from 50% to 99%
- Yet **processes** the equivalent of 15% of the annual stream flow achieving tremendous nutrient concentration reductions THAT when you extrapolate load indicates an average annual processing potential of 2% N, 5% P, and 5% TSS total annual load reduction



Moving Forward - Wetland and Natural Area Projects



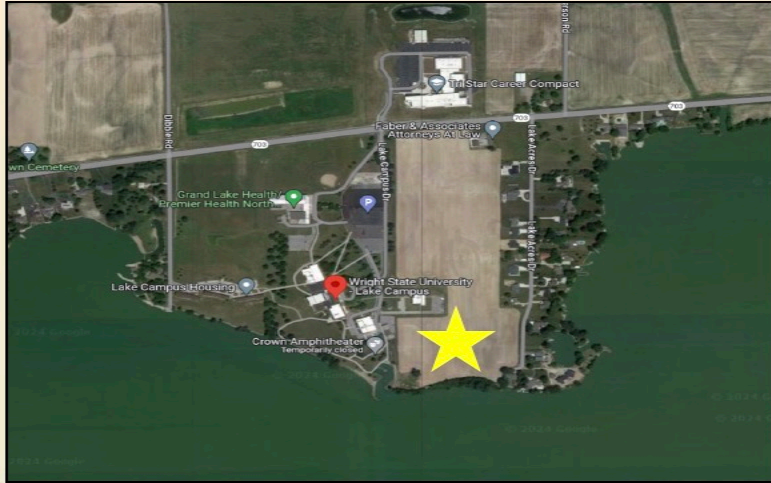
Lots of natural spaces have been restored - BUT there is still work to be done

Wright State and the Environment



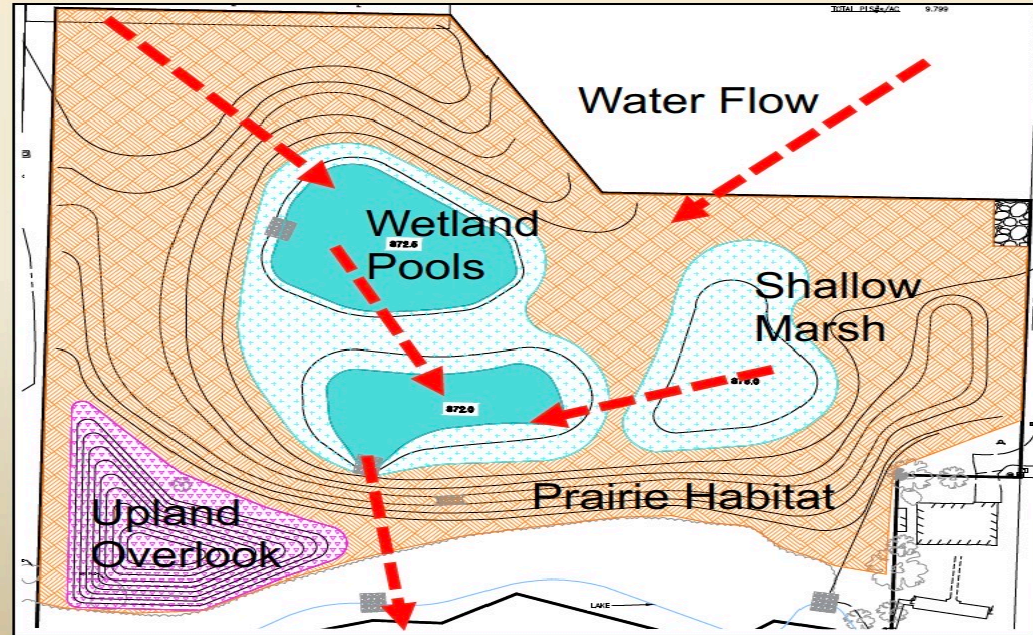
Special thank you to Vice Provost Faber, President Edwards, Provost Thompson, and the Board of Trustees for their support in helping continue making positive strides towards environmental conservation. The watershed's newest wetland made possible through collaboration between Clean Ohio, H2Ohio, Lake Facilities Authority, Wright State, and the Lake Restoration Commission

A New Day and a New Wetland



Wetland will treat between 50 and 75 acres and be one of the first restored wetlands on the north shore of Grand Lake

Situated on 10 acres this area will improve water quality, increase biodiversity, provide the public with additional greenspace, and serve as a living laboratory for students





BOARD OF TRUSTEES



**WRIGHT STATE
UNIVERSITY**