

# 2024 Staff Symposium

January 24, 2024

Presented by  
Wright State University's  
Staff Senate



**WRIGHT STATE  
UNIVERSITY**

# Staff Symposium Protocol

## For Presenters:

- Please be ready in waiting area just prior to your presentation.
- Please use the micro-phone.

## For Participants

- We will not be taking questions during the presentations. Please direct questions to the email on the handout.
- Please provide feedback via the Engage Feedback email or to [seth.gordon@wright.edu](mailto:seth.gordon@wright.edu) or [amanda.spencer@wright.edu](mailto:amanda.spencer@wright.edu)

# Counseling and Wellness Services

## 053 Student Union

David Toller, M.S., LPCCC-S



WRIGHT STATE  
UNIVERSITY



ON DECK:  
STUDENT ADVOCACY & WELLNESS

## *Staff/Trainees*

**Director** - Dr. Barb Marsh

**Associate Director of Clinical Training** - Dr. Inna Fatkins

**Staff Therapist** - Tom Rathbun

**Health and Wellness Coordinator** - Sarah Baker

**Staff Therapist** - David Toller



SOPP Practicum Students \* Social Work Practicum Students \* Counseling Practicum and Internship Students \* Psychiatry Residents and Graduate Nurse Practitioner \* Marketing Graduate Student \* Undergraduate Social Work Student \* Psychology, Social Work, Counseling and Psychiatry Supervisors

## *Services Offered*

### ***Individual Counseling***

Face to face and telehealth individual counseling is available.

### ***Psychological Assessment***

Offers several types of assessment as a standalone service.

### ***Group Counseling***

A wide variety of groups are offered, including anxiety, depression, grief and skills groups.

### ***Psychiatry***

Partnership with the Boonshoft School of Medicine to offer medical management of mental health and substance use conditions.



### ***Health Promotion and Prevention***

Mental health promotion and prevention outreach to minimize mental health problems and optimize positive mental health for students and staff.

## Access Services

- Go to [wright.edu/cws](http://wright.edu/cws), Counseling and Wellness Services to schedule an appointment.
- Call our office: 937-775-3407
- Walk in during office hours M-F 8:30 a.m.– 5 p.m.



## Additional Crisis Services

### Raider Cares

Raider Cares is Counseling and Wellness Services' 24-hour crisis phone service. You can reach the Raider Cares Line by calling 937-775-4567.

### 988 Suicide and Crisis Lifeline

Call 988

Chat 988 at 988lifeline.org

Text Suicide and Crisis Lifeline at 741741

## *Referring and Communicating*

General Questions about Services - 937-775-3407

Walking Students to CWS who are in Crisis - Monday - Friday 8:30 a.m.- 5 p.m.

Calling our Office While Student is Present

Encouraging Students to Visit our Website or Walk-in

Collaboration/Programing by email

Director: [barb.marsh@wright.edu](mailto:barb.marsh@wright.edu) Associate Director: [inna.fatkins@wright.edu](mailto:inna.fatkins@wright.edu)

Trainings in the Future: Mental Health First Aid Outreach Presentations

Pressing Change - All new staff



# Student Advocacy and Wellness Center (SAWC)

Destinee Biesemeyer, M.S.W., MSc-DRL  
Director



ON DECK:  
ORIENTATION AND SUCCESS PROGRAMS



# Student Advocacy and Wellness Center (SAWC)

Student Union 051

Advocates: Tylar O'Neal-White, Kyla Arroyo

*Front desk has been unstaffed for 18 months,  
so if the door is open just walk in*

# Primary Purpose of SAWC

If a student experiences a **personal, academic, or institutional challenge** that is impacting their ability to focus on education – we are here to assist.

- Case Management
- Campus and Community Referral
- Professor Communication
- Emergency Funding
- Raider Food and Personal Care Pantry
- Raid Our Closet
- Independent Scholars Network

# Connecting with SAWC

[studentadvocacyandwellness@wright.edu](mailto:studentadvocacyandwellness@wright.edu)

*937-775-3749 (non-emergencies)*

*937-260-0167 (non-emergencies, after hours)*

RAPS/EAB Alert for “wellbeing/safety”

Wright State Cares Alert

Students: book online at [wright.edu/sawc](http://wright.edu/sawc)

# SAWC Updates

Food Pantry: students need to make a general appointment first for a screening to evaluate whole student needs

- reduces no-shows
- ensures need
- protects access for students who need the resource

Outreach Programming: lead is shifting to CWS's Wellness and Health Program Manager; we will assist in transition but won't be the primary provider moving forward.

# Orientation and Success Programs

## 101 Student Success Center



ON DECK:  
UNIVERSITY ACADEMIC ADVISING

# Orientation and Success Programs

## 101 Student Success Center

**Director**, Cheryl Bringhurst

### **Staff Team**

- Marsha Henderson
- Heath Marker
- Marilyn Broadwater
- Michelle Dixon
- Carolyn Gunn
- Megan Conley

# Orientation and Success Programs

## 101 Student Success Center

- Welcome new-students and families to the Wright State Community
- Introduce information and resources that help new-students make informed plans & choices
- Help new-students learn policies and expectations for a successful adjustment experience
- Aid new-students in making transition to their new college environment
- Emphasize the importance of campus involvement & engagement
- Deliver student-centered programs/events, support and individualized case-management

# **Orientation and Success Programs**

**101 Student Success Center**

**937-775-5750**

**orientation@wright.edu**

**wright.edu/orientation-and-success-programs**



# University Academic Advising

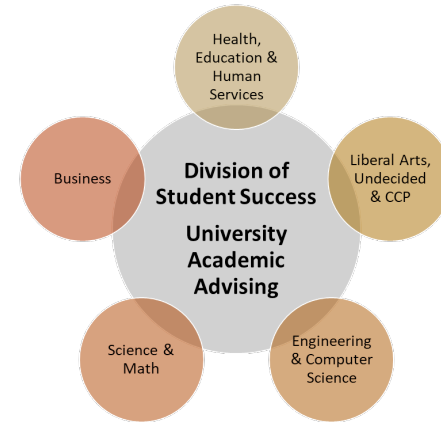
## 101 Student Success Center



ON DECK:  
RESIDENCE LIFE AND HOUSING

# University Academic Advising

- Who We Are
  - Dayton Campus
  - Professional Advising Teams
  - Housed within the Academic Colleges
  - Centrally Coordinated, De-centrally delivered
- Who We Serve
  - Undergraduate Students in all Colleges
  - College Credit Plus (CCP) Students
  - M.B.A. students
  - Prospective Students



# OUR GOAL: Course and Degree Completion

- Consistent progress toward degree completion
  - Requires consistent completion of required courses
- Key Factors
  - Completing needed DEV courses within first year
  - Course availability
    - Semester
    - Days/Times
    - # of Sections
    - Consistent Course Offerings

## Academic Planning

- uAchieve Degree Audit
- Individualized Academic Plans

## Transfer Credit Evaluation

- Appropriately acknowledging previously earned credit
- Transfer Evaluation System (TES)

# How to reach us?

- Connect Students with Academic Advising ([wright.edu/advising](http://wright.edu/advising))

**College Advising**

Students are advised in the college of their admitted or intending major. Students who are undecided and exploring major options are advised in University College.

- **Non-degree students**—please contact academic advising in the college teaching the course you wish to take. A full list of college advising offices is listed below. If you are unsure of the college to contact, please call 937-775-5750 for assistance.

Regular appointments with your advisor will help you stay on track to graduation. Contact your advisor any time you have questions or concerns. Academic advisors will be available in the following locations:

<p><b>RAJ SOIN COLLEGE OF BUSINESS</b></p> <p>100 Rike Hall 937-775-2437 <a href="mailto:rsob-advisors@wright.edu">rsob-advisors@wright.edu</a></p>	<p><b>COLLEGE OF ENGINEERING AND COMPUTER SCIENCE</b></p> <p>280 Joshi Research Center 937-775-5272 <a href="mailto:cecsa-advisors@wright.edu">cecsa-advisors@wright.edu</a></p>
<p><b>COLLEGE OF HEALTH, EDUCATION, AND HUMAN SERVICES</b></p> <p>Education, Human Services, and Social Work</p>	<p><b>COLLEGE OF LIBERAL ARTS</b></p> <p>120 Millitt Hall 937-775-2963</p>

- Ways to help?
  - Encourage students to review their degree audits & meet with their academic advisor regularly
  - Update advising units with any upcoming curriculum changes



# Residence Life & Housing

Jennifer Attenweiler, Director

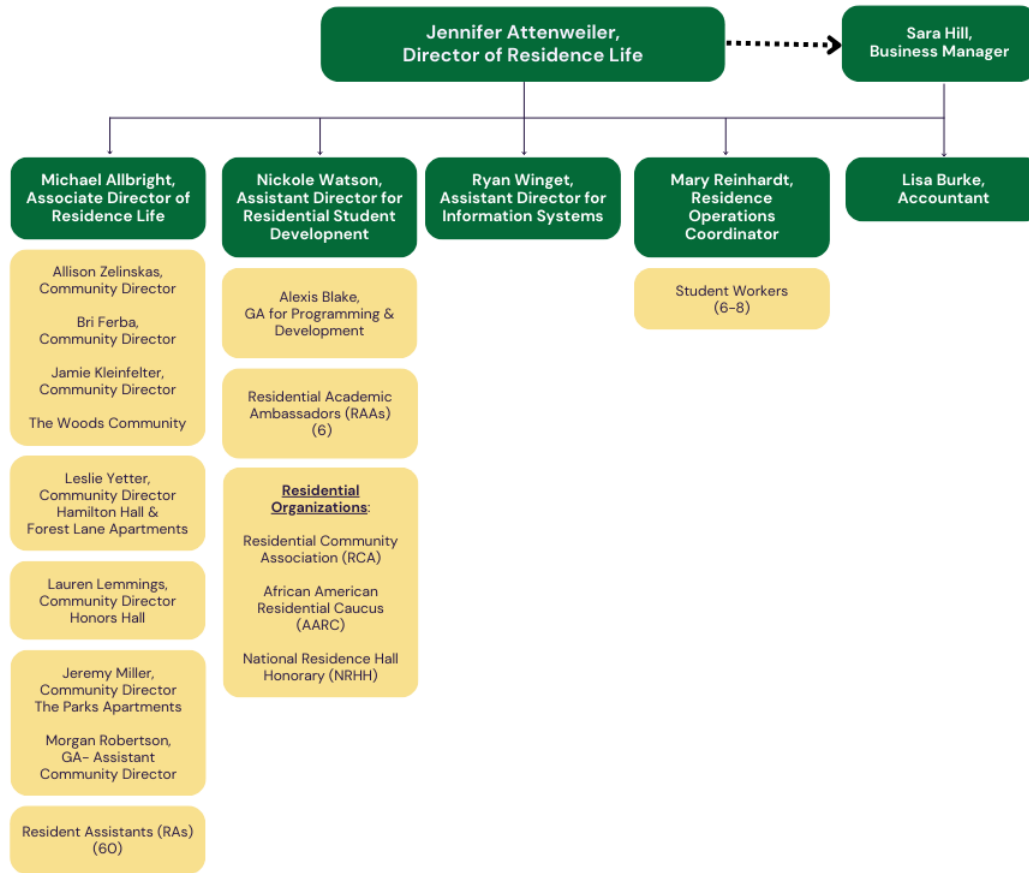
# Community Center



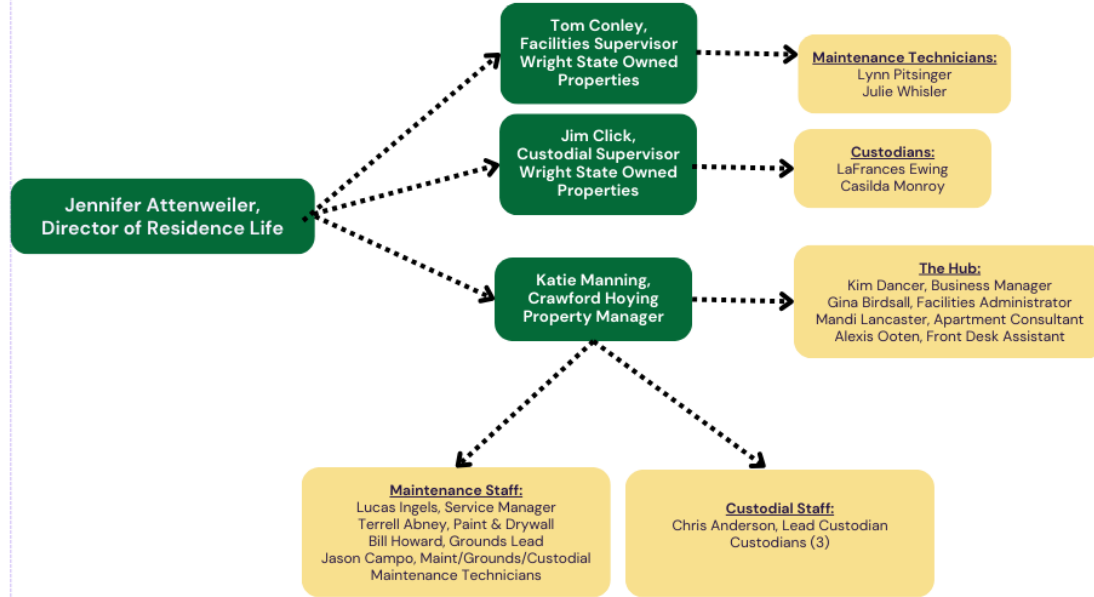
**WRIGHT STATE  
UNIVERSITY**

ON DECK:  
OFFICE OF DISABILITY SERVICES

## Residence Life & Housing



## Residence Life & Housing- Facilities





# Housing Communities & Information

## Residence Halls:

- Hamilton Hall
- Honors Community
- The Woods

## Apartments

- Forest Lane
- The Parks
- The Village

## Why Live Wright?



# Contact, Follow & Volunteer

Contact Information:

 937-775-4172

 [wright.edu/housing](http://wright.edu/housing)

 [housing@wright.edu](mailto:housing@wright.edu)

  @WSUHousing

 Wright State University Housing



# Office of Disability Services

Office Location - 180 University Hall

Office Phone - 937-775-5680

[disability\\_services@wright.edu](mailto:disability_services@wright.edu)



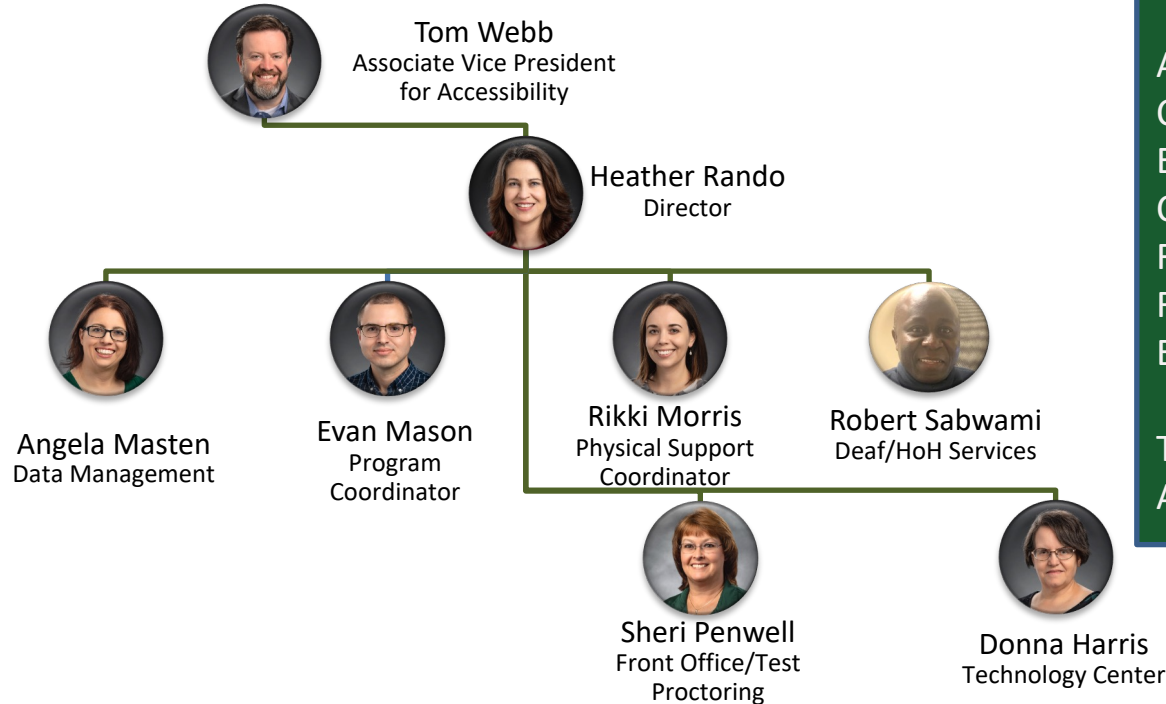
WRIGHT STATE  
UNIVERSITY

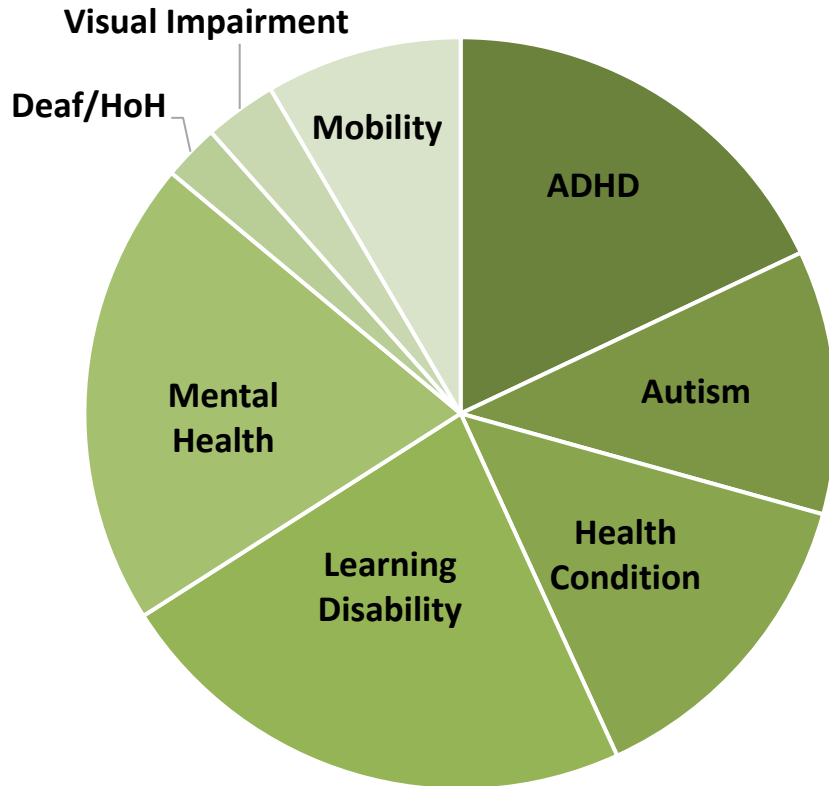
ON DECK:  
TITLE IX

# ODS Staff

## ODS Student Case Loads

Angela – RSCOB, COLA, Lake Campus  
Evan – BSOM, CHEH (Nursing, SW, Counseling, SOPP)  
Rikki – COSM  
Robert - CECS, CHEH (OL, Rehab, Education), University College  
Tom Webb – Faculty/Staff Accommodations





## ODS by the Numbers

- 963 registered students
- 50% have more than one disability
- 10% have a disability you can see
- **90% have an *invisible* disability**
  - 30% Mental Health

# Getting Connected to ODS

## 3-Step Registration Process

1. Complete Online Application - [wright.edu/ODS](http://wright.edu/ODS)
2. Submit Documentation
  - IEP/504 Plan from High School
  - Eligibility/Accommodation Letter from previous institution(s)
  - Documentation of physical, psychological, or other disabilities – forms available on ODS website
3. Attend College Accommodation Plan (CAP) meeting with case manager

### AIM database

- Secure, private portal for communicating & managing accommodations.
- Only registration status & accommodation information will be accessible to faculty.
- Protected, disability-specific information will not be shared outside of ODS without your consent.

# Accommodations

- Alternative Testing Accommodations
  - Extra Time, Private Room, Reader/Writer, Assistive Technology
- Alternative Format for Textbooks/Course Materials
  - Print books converted to accessible formats, accessibility of online materials
- Deaf & Hard of Hearing accommodations
  - C-print, closed captions, ASL interpreting
- Housing Accommodations
- Physical Support

What's coming: Accessibility Aviator Training Series

# Title IX at Wright State

Kate Page, Ph.D.

Compliance Specialist & Title IX Coordinator



ON DECK:  
DEPARTMENT OF PUBLIC SAFETY



# Title IX Office Information

Location: Office of Audit, Risk, & Compliance

- 352 University Hall (same suite as General Counsel)

Contacts:



Kate Page, Ph.D.  
Title IX Coordinator



JJ Jenkins  
VP of Risk Management,  
Deputy Title IX Coordinator



Joylynn Brown  
Deputy Athletics Director/  
Senior Administrator

# What is Title IX?

## Title IX of the Education Amendments of 1972

“No person in the United States shall, on the basis of sex, be excluded from participation in, be denied the benefits of, or be subjected to discrimination under any education program or activity receiving Federal financial assistance.”

---

## Title IX at Wright State

- Sex/Gender-Based Harassment, Discrimination, and Sexual Misconduct policy (University Policy 1270)
- Prohibited Behaviors:
  - Sexual Assault
  - Dating Violence
  - Domestic Violence
  - Sex-Based Stalking
  - Quid Pro Quo Sexual Harassment
  - Unwelcome Conduct Sexual Harassment

# Contact/Reporting

## Directly

- Phone: 937-775-3512
- Email: [kate.page@wright.edu](mailto:kate.page@wright.edu),  
OR
  - [TitleIX@wright.edu](mailto:TitleIX@wright.edu), OR
  - [Compliance@wright.edu](mailto:Compliance@wright.edu)
- In-Person: 352 University Hall

## Anonymously

- Ethics Point:  
[www.wright.ethicspoint.com](http://www.wright.ethicspoint.com)
  - Please provide name(s) of harmed person(s) and perpetrator(s), if known
  - The more details, the more quickly support can be provided

# Responsible Employee

- Certain employees at Wright State are required to report incidents on or off campus related to University Policy 1270
- Responsible employees should disclose information to the Title IX office or Ethics Point:
  - As soon as is reasonable (or within 24 hours)
  - Provide name(s) of harmed person(s)
  - And relevant facts, such as time, date, location of incident

The following are “Responsible Employees” pursuant to this Policy:

President and Vice Presidents		Provost, Vice Provosts
Deans and Chairs		Student Success Center Employees
Academic and Student Advisors		Residence Life and Housing Employees
Culture & Identity Center Employees		Office of Fraternity & Sorority Life Staff
Department Heads and Director-Level Staff		Athletic Director and Coaching Staff
WSU Police (Except for confidential reports)		Student Affairs staff
Office of Disability Services staff		Campus Recreation staff
Faculty		Admissions staff
Human Resources staff (except for EAP)		Inclusive Excellence staff
Study Abroad staff and faculty		

---

If you believe someone is about to disclose an incident, alert that person that you are a responsible employee and will need to share their information with the Title IX office, direct them to confidential resources if needed:  
**Student Legal Services | Counseling & Wellness | Health Center | Employee Assistance Program**



# Department of Public Safety



ON DECK:

UNIVERSITY CENTER FOR INTERNATIONAL EDUCATION

# Who is DPS?

- DPS consists of;
  - Police
  - Parking
  - Lock Shop (key control)
  - Communications Center
  - Customer Care Center
  - Emergency Preparedness
  
- DPS provides police and public safety services for the entire campus community.
  
- DPS employs police officers certified through the Ohio Peace Officer Training Commission.
  
- 24/7 full-service operation.

# Where is DPS Located?

## Headquarters

- 108 Allyn Hall
- M–F (8:30 a.m.–4:30 p.m.)

## Public Safety Service Center

- 060 Allyn Hall
- 24/7, 365 Days
- 9-1-1 or 937-775-2111



# Campus Notifications & Alerts | Clery

## Crime and Campus Safety Notifications

	Timely Warning	Emergency Notification
Scope	A narrow focus on <a href="#">Clery Act Crimes</a>	Wide focus on any significant emergency or dangerous situation (may include <a href="#">Clery Act Crimes</a> )
Why	Triggered by crimes that have already occurred but represent an ongoing threat. Issues a Timely Warning (Wright State Safety Alert) for any <a href="#">Clery Act Crime</a> committed in the Wright State Clery geography that is reported to Public Safety or a local law enforcement agency considered by the Director of Public Safety to represent a continuing threat to the Wright State community.	Triggered by an event that is currently occurring or imminently threatening to campus. The Department of Public Safety initiates the Emergency Notification for any significant emergency or dangerous situation occurring on the campus involving an immediate threat to the health or safety of the Wright State community.
Where	Within the <a href="#">Clery Geography</a>	On or near campus
When	Issued as soon as pertinent information is available	Initiated immediately upon confirmation that a dangerous situation/emergency exists or threatens the campus community
How	By sending a mass email to the campus community	By phone, text, email, website, electronic signage board, social media and audio system

**Note:** There may be times, at the discretion of the Director of Public Safety, when a mass email is sent out to the campus community for other crimes or incidents that do not rise to the level of causing a serious or continuing threat to the campus but are still a safety concern.



# Wright State Emergency Notification System

## *Wright State Alert!*

- The purpose of this system is to keep students and employees informed about emergencies and life-threatening situations on campus.
  
- Numerous methods are used to share emergency information.
  - Email: All wright.edu addresses are automatically enrolled
  - Text message
  - Wright State University homepage
  - Nutter Center marquee
  - Voice phone message
  - X (formerly known as Twitter)
  - Facebook
  - Building notification system
  - Text message (Opt-In via WINGS)



# Everything Else

- ❑ And WE mean everything...
  - Parking
  - Records
  - Keys
  - Work Orders
  - And.... anything else you can think of

# Attend a Public Safety Program



The Department of Public Safety provides educational programs throughout the year, including:

- **Campus Safety Series (monthly topics vary)**
- **Run, Hide, Fight**
- **QPR (Question, Persuade, Refer) suicide prevention**
- **NARCAN Kit Distribution and Education**

For program descriptions and to RSVP, visit the **Public Safety** page on Engage or scan the QR code.



# University Center for International Education

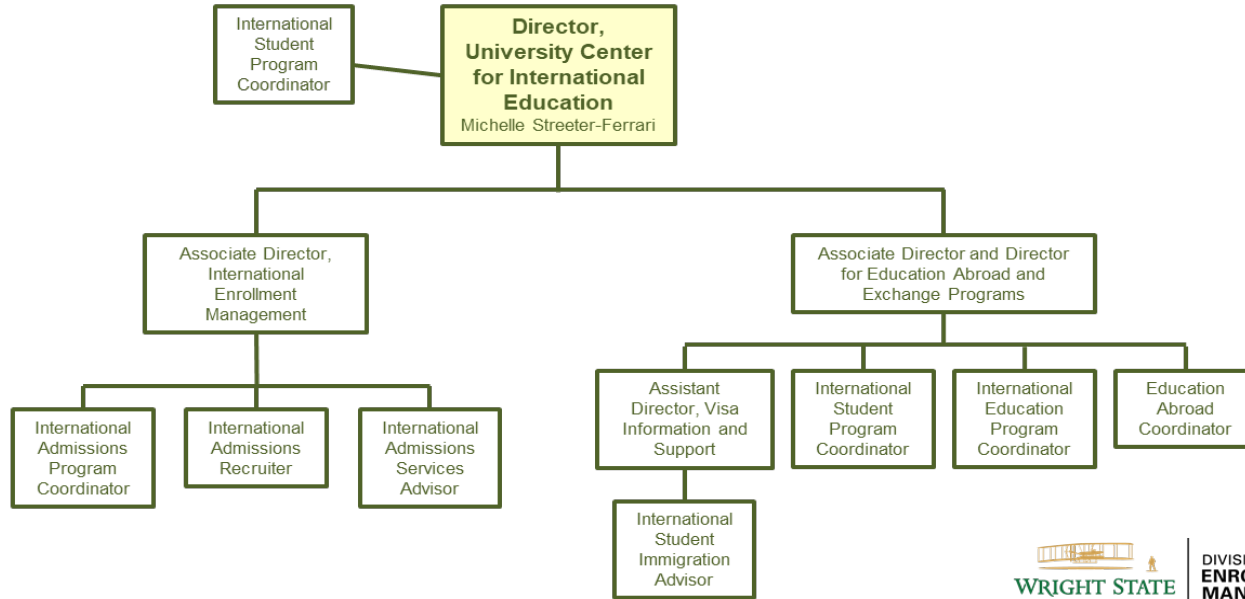
## 224 Student Union



ON DECK:  
LAKE CAMPUS

# Staff and Services

## University Center for International Education



# Core Responsibilities in UCIE

## International Education

- Visitors
- Exchange Partnership Management
- Contract Management
- Scholarships
- Awards
- Grants
- Travel and Risk Management
- International Week
- US Passport Center

## International Enrollment Management

- Brand Awareness
- Recruitment
- Agent Management
- Agent Payments
- Virtual and In-Person Fairs
- Undergraduate Admissions
- Graduate Admissions
- Credential Evaluations
- Transfer of Credits

# Core Responsibilities in UCIE

## International Students and Scholar Services

- Immigration Processing/Reporting
- Immigration Advising
- Pre-arrival and Arrival Assistance
- New Student Orientation
- Cultural Programming
- Student Groups
- Advocacy
- Emergency Support
- Non-Academic Advising

## Study Abroad and Exchange Programs

- Study Abroad Advising
- Faculty Support
- Coordination of Payments
- Promotion and Recruitment
- Co-curricular Programming
- Exchange Students and Groups
- Fulbright, Gilman and Scholarships
- Emergency Support
- Non-Academic Advising

# Contact UCIE

Microsoft Teams

General Questions: [askucie@wright.edu](mailto:askucie@wright.edu)

International Admissions: [international-admissions@wright.edu](mailto:international-admissions@wright.edu)

International Immigration Services: [ucieimmigration@wright.edu](mailto:ucieimmigration@wright.edu)

Study Abroad: [studyabroad@wright.edu](mailto:studyabroad@wright.edu)

Tel. 937-775-5745

WhatsApp 937-231-4230





LAKE CAMPUS

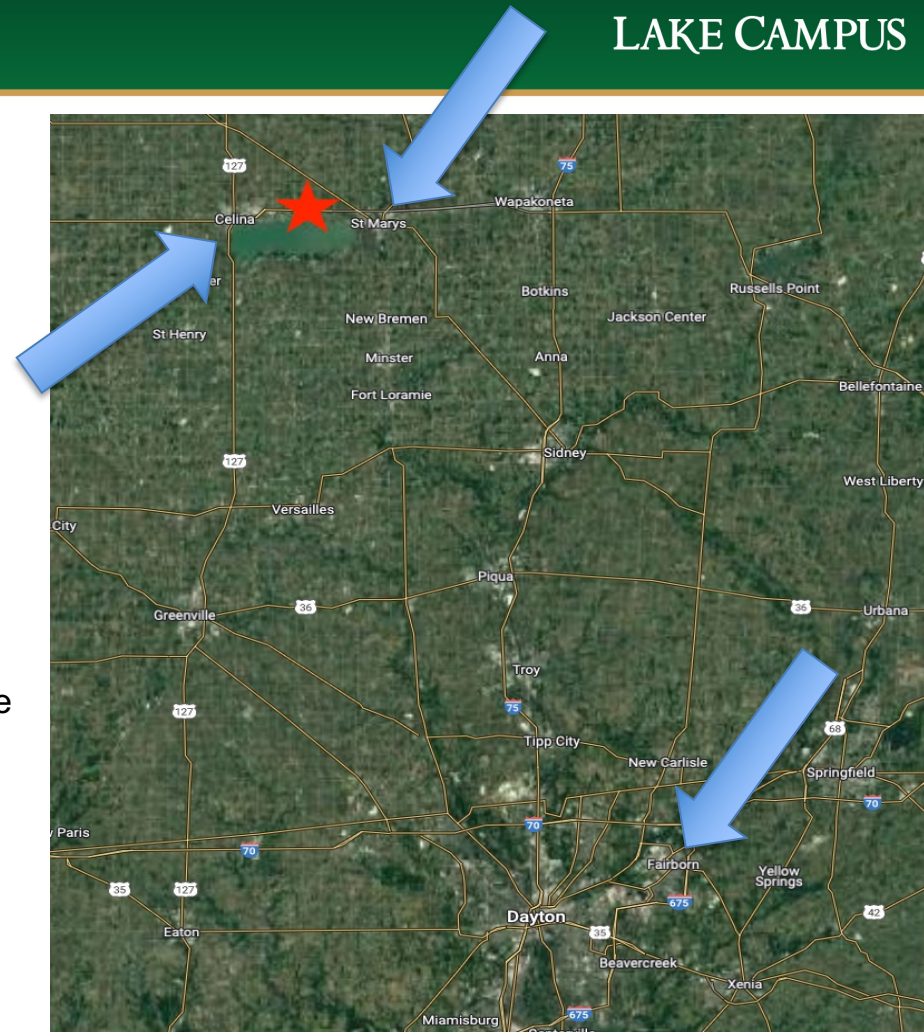
7600 Lake Campus Dr., Celina, OH 45822



ON DECK:  
COMPUTING AND TELECOMMUNICATIONS

## Wright State University–Lake Campus

- THE regional campus of Wright State University.
- We are located in Celina, OH.
- Began by a group of community members
- Western Ohio Educational Foundation
- Approximately 800 degree-seeking students and nearly 400 College Credit Plus students.
  - 85% of our degree-seeking students are full-time students.
- Mercer County has a population of 42,000
  - Low unemployment rate
  - Growing population



# The campus



Visit [lake.wright.edu/maps](http://lake.wright.edu/maps) or our website for a virtual tour!

# What will you find on campus?

- We offer a variety of certificates, associate and bachelor's degrees
- We offer the Wright State Core
- Campus housing, cafeteria, library, study space, computer labs and more are available to students!
- Approximately 40 full-time faculty
- Approximately 30 staff members
- Staff member duties range from academic advising to admissions, events, accounting, student affairs and more!
- Reach out to us at [discoverlakecampus@wright.edu](mailto:discoverlakecampus@wright.edu)!

# Computing and Telecommunications Services (CaTS)



WRIGHT STATE  
UNIVERSITY

ON DECK:  
SHORT BREAK

# CaTS

- Who We Are
  - We are committed to providing high-quality technology solutions and services that will help our students, faculty, and staff be successful in their endeavors while at Wright State.
- Responsibilities
  - Accounts (2FA)
  - Technology
  - Network and Internet Access
  - Printing



# CaTS Services

- Email
  - Microsoft 365
- Messaging/Video Conferencing
  - Microsoft Teams
  - Cisco Webex
- Pilot
  - D2L/Brightspace
- Printing
- Remote Virtual Labs
- Software Access
  - Including Adobe Creative Cloud
- Laptops2Go



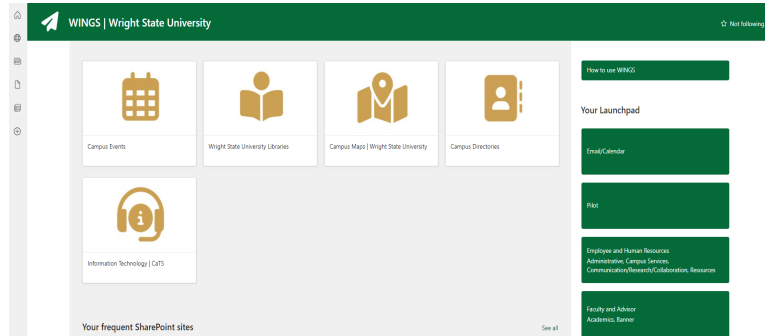
D2L



vmware Horizon

## Updates and Things to Know

- New WINGS
  - Currently accepting feedback
  - Will function as a universal portal for WINGS Classic, WINGS Express, and the SharePoint homepage
  - Improved responsive design and mobile view
  - Improved audience targeting
- Email Phishing
- Information Security Training (Pilot)
- Pilot Course Availability for Students
- Wright State Account related problems





## How to reach us?

- [helpdesk@wright.edu](mailto:helpdesk@wright.edu)
- 937-775-4827
- 025 Library Annex
- [wright.edu/IT](http://wright.edu/IT)

WRIGHT STATE UNIVERSITY

CALENDAR DIRECTORIES MAPS PILOT WINGS APPLY Search

CaTS | Information Technology

Request Support

Hours and Location

Help Desk: 937-775-4827

CaTS | Information Technology

WRIGHT STATE UNIVERSITY

Home Facilities Catalog Personnel Catalog Marketing Catalog Knowledge Service Catalog Contact

How can we help?

Report a Problem

Submit a Request

### Common Requests

Alumni Account  
Institutional Research & Electronic Data Request  
Network Support Request  
Workstation Setup  
Device Request (Personal)  
Request for Print/Scan Request  
Request for Print/Scan Community Request  
Request for Print/Scan Request  
Print - Course Class Listing Request  
Submitting an Incoming Application to the System  
Server Registration & Provisioning  
CITS Project Request

Can't find what you need?  
Take a look at our Service Catalog for a full listing of services, or submit a general request to the help desk here.

We have no pending approvals

My Open Incidents

No records found

My Service Requests

No records found



# Short Break

Subscribe to Staff Senate's Blog!!



ON DECK:  
CAREER SERVICES

# Career Center/Career Services

Location: Career is everywhere



ON DECK:  
ENROLLMENT SERVICES

# Who are we?

Director  
**Kim Gilliam**



Student Services Specialist  
**Cathy Dalton**



**Ashley Hill-Mercer (COSM)**  
172C Brehm



**Lance Cauley (RSCOB)**  
108 Rike



**Mariann Boron (CECS)**  
280 Joshi



**Teri Stebbins (CEHH)**  
140 Millett



**Wayne Stark (COLA)**  
106H Allyn



- Vacant (UH)

# What do we do?

- Major selection and changes (voluntary & involuntary)
- Internship & Job search
  - Resume and cover letters
  - Mock interviews
  - Salary negotiation
- Handshake
- Outcome survey
- Employer connection
- Alumni



# How to contact us?

- E-mail: [career\\_services@wright.edu](mailto:career_services@wright.edu)
- Phone: 937-775-2556

# Cha...cha...cha...changes...

- Best-in-Class Career Center
- New space – Pathfinder Lounge
- First Destination Survey
- Expanded use of Handshake
- Employer services
- Staff programming



# Enrollment Services (formerly known as RaiderConnect)

**Andrea Sanders**

*Director, Enrollment Services and Outreach*

University Hall, Suite 101

3640 Colonel Glenn Hwy.

Dayton, OH 45435



**WRIGHT STATE  
UNIVERSITY**

ON DECK:  
FINANCIAL AID



# Rebranding



***RaiderConnect***  
IS NOW  
**ENROLLMENT SERVICES**

**←**

**Accounts  
and Bills**

**Financial Aid**

**Registration**

101 UNIVERSITY HALL

8:30 a.m.–5 p.m.  
(MONDAY, TUESDAY, THURSDAY, FRIDAY)

9:30 a.m.–5 p.m.  
(WEDNESDAY)

[wright.edu/enrollment-services](http://wright.edu/enrollment-services)

**Enrollment Services  
*RaiderConnect*  
HAS MOVED**

**NEW LOCATION:**

**101 UNIVERSITY HALL**

**8:30 a.m.–5 p.m.**

(MONDAY, TUESDAY, THURSDAY, FRIDAY)

**9:30 a.m.–5 p.m.**

(WEDNESDAY)

[wright.edu/enrollment-services](http://wright.edu/enrollment-services)



# Enrollment Services (RaiderConnect) is Ready to Help You



Explore and apply for financial aid



Request financial aid adjustment for special circumstances



Submit forms



Get help with adding or dropping classes



Learn about student fees and charges



Establish a payment plan



Add an authorized user or proxy



Set up a direct deposit for financial aid refunds

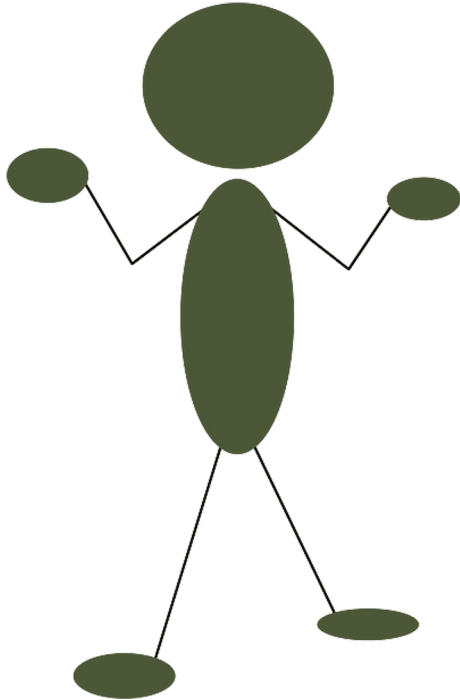


Navigate WINGS Express



And so much more

# What Enrollment Services does NOT do:



- “I’m calling to get that Student Health Insurance off my bill”
  - StudentHealthInsurance@wright.edu
- “My username/password needs to be reset”
  - CaTS – [helpdesk@wright.edu](mailto:helpdesk@wright.edu) or 937-775-4827
- “You need to add me to Pilot”
  - CaTS – [helpdesk@wright.edu](mailto:helpdesk@wright.edu) or 937-775-4827
- “I want to change my meal plan”
  - Dining@wright.edu
- “I’m not living in student housing and need those fees removed.”
  - [Housing@wright.edu](mailto:Housing@wright.edu) or 937-775-4172

**Need Help? Contact Us! 😊**

[Our social media presence](#)

Website: [wright.edu/enrollment-services](http://wright.edu/enrollment-services)

Email: [raiderconnect@wright.edu](mailto:raiderconnect@wright.edu)

Wright State RAIDER CONNECT



@Raider\_Connect



**Enrollment Services (RaiderConnect) at  
Wright State University**

**Hours: 8:30 a.m.-5 p.m. M, T, R, & F  
9:30 a.m.-5 p.m. W**

**Telephone: 937-775-4000**



# Office of Financial Aid (101 University Hall)

- 2024-25 FAFSA
- Federal Work Study (FWS)



ON DECK:  
STUDENT LEGAL SERVICES

# 2024-25 FAFSA

**FAFSA simplification** refers to the combined impacts of several pieces of legislation passed since 2019 that aim to streamline the Free Application for Federal Student Aid (FAFSA).

# 2024-25 FAFSA – What's New?

- Streamlining and simplifying the FAFSA – obtaining the applicant's income directly from the IRS
- Changes to Pell Grant eligibility criteria, including new automatic maximum/minimum Pell Grants based on federal poverty guidelines.
- New terminology - Replacing EFC with SAI



# 2024-25 FAFSA – Potential impacts

- Anticipated increase in Pell-eligible students.
- New data-sharing limitations
- Compressed time frame to make financial aid offers due to the delayed release (*this year only*)
  - **January 1**
    - Soft Launch
  - **Beginning in February**
    - FAFSA data sent to schools
    - Students and schools can make corrections to a submitted FAFSA

Visit [wright.edu/deadlines](https://wright.edu/deadlines) for up-to-date financial aid timelines.

# Federal Work-Study (FWS)

## Federal employment program for students

- Degree-seeking
- Enrolled half-time
- Unmet financial need, as determined by the FAFSA

## Benefits

- ED will exclude any wages earned by the student in a Federal Work-study position from the student's total earned income on the FAFSA for the given tax year.
- The federal government subsidized 75% of the student's wages.

## How to apply

- Students who file the FAFSA by the priority deadline and meet other eligibility requirements are offered FWS on their financial aid award notice.

[wright.edu/enrollment-services/financial-aid/work-study](https://wright.edu/enrollment-services/financial-aid/work-study)

# Student Legal Services

022 Student  
Union



**WRIGHT STATE  
UNIVERSITY**

ON DECK:  
ACADEMIC SUCCESS CENTERS

# Student Legal Services

- On-campus law firm with 2 fully-licensed attorneys
  - Stephanie Allen, Managing Attorney
  - Brad Steel, Staff Attorney
  - Jen Lenos, Paralegal
- Provide consultations and representation in over 30 local Courts.
- Who can use our services? Any currently enrolled student who has paid the \$16 per semester Student Legal Services participation fee.
- Think of it as legal insurance!

# Services:

## What we can do:

- Advice about any issue
- Send students to our office even if it's "quasi-legal"
- Representation in Court
  - Traffic Laws
  - Criminal Law
  - Landlord Tenant Law
  - Civil Law
  - Family Law
  - Wills/Powers of Attorney
  - Notary Services

## What we can't do:

- Representation on issues where a conflict of interest may arise
  - Student v. Student
  - Student v. University
    - Student conduct issues
    - Title IX issues
- Certain areas of law
  - Real Estate
  - Bankruptcy
  - Felony Criminal Law
  - Immigration

# How can we work together?

- Advise the student to accept and pay the Student Legal Services fee.
  - If the student is in crisis, walk the student to our office or call us and we will come to your office.
  - Tell the student that SLS is 100% confidential and that we are NOT mandatory reporters.
  - If you are faculty or a student org advisor, email us to schedule a time for us to speak to your class/students.
  - We would be happy to come to your office to give your staff a quick introduction on our services!
- Text or email is best, but we know students don't often follow through.
    - The best way to refer a student to our office is to send us an email and CC the student on it.
  - The best way to communicate with our office is via email:
    - [studentlegalservices@wright.edu](mailto:studentlegalservices@wright.edu)

# Questions?

022 Student Union

937-775-5857 Call or Text us!

email us at [studentlegalservices@wright.edu](mailto:studentlegalservices@wright.edu)

# Academic Success Centers



ON DECK:  
STUDENT EMPLOYMENT



# Who are the Academic Success Centers (ASC)?

- Math Learning Center
- Tutoring Center
- University Writing Center



122 Student Success Center (SC)

937-775-5770

[wright.edu/academic-help](http://wright.edu/academic-help)

# Math Learning Center (MLC)

- Graphing Calculator Rental
  - \$20 deposit
- Walk-in & Virtual Appointments Available



Director: Emanuel Clayton

# Tutoring Services

- Individual/Small group appointments
  - Course Based Tutoring
  - Peer Academic Coaching for general academic skills
- Supplemental Instruction group review sessions available



# University Writing Center (UWC)

- Support for the whole writing process for any course
- 3 Appointment models:
  - In-person
  - Online (MS Teams)
  - Email Response
- Up to 2 hours per week



# Student Employment Program

(physical location currently in transition)



ON DECK:  
STUDENT INVOLVEMENT AND LEADERSHIP

**Debra Wilburn - Associate Director**

**Jamie Henne - Student Services Coordinator**

**Carly Porter - Student Services Coordinator**

## What Student Employment staff do:

- ✓ We act on requests for an account to create job postings.
- ✓ We review job postings submitted by on-campus employers.
- ✓ We administer the *multiple* hiring, termination and verification processes for each student employee.
- ✓ We provide confirmation of employee status and the employee start date.

---

*Hiring departments* are responsible for initiating student employment personnel actions; supervision of student employees; assigning, monitoring, and approving work hours; compliance with employment law and Wright State policies; and other employment policies and procedures.



# Student Employment Program

delighted to have recently realigned as a Human Resources unit



## How to learn more:

[wright.edu/human-resources](http://wright.edu/human-resources) > select *Student Employment*

The web pages offer self-serve education about student employment

---

Best way to communicate and refer others:  
[studentemployment@wright.edu](mailto:studentemployment@wright.edu)

---

GET

involved



STUDENT  
INVOLVEMENT  
AND LEADERSHIP

ON DECK:  
UNIVERSITY LIBRARIES

## Student Involvement and Leadership Center or SILC

Student Union next to the pool entrance, 190 Student Union

Eric Corbitt [eric.corbitt@wright.edu](mailto:eric.corbitt@wright.edu) x5825

Debbie Lamp [debbie.lamp@wright.edu](mailto:debbie.lamp@wright.edu) x5566

SILC operations, student media orgs, commuter students, campus programs

Gina Keucher [gina.keucher@wright.edu](mailto:gina.keucher@wright.edu) x5560

Fraternity and Sororities and Leadership Programming

Courtney Laukitis [courtney.laukitis@wright.edu](mailto:courtney.laukitis@wright.edu) x5541

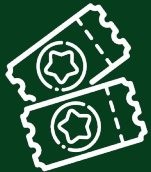
Engage, student organizations and their programs, and Homecoming

Dylan Collison [sil@wright.edu](mailto:sil@wright.edu) x5574

Student organization finances



STUDENT  
INVOLVEMENT  
AND LEADERSHIP



EVENTS AND  
PROGRAMS



CLUBS  
AND ORGS



FRATERNITY &  
SORORITY LIFE



LEADERSHIP  
PROGRAMS



COMMUNITY  
SERVICE



COMMUTER  
SERVICES

CALL: 937-775-5570  
EMAIL: [SIL@WRIGHT.EDU](mailto:SIL@WRIGHT.EDU)  
VISIT: 190 STUDENT UNION

Student Involvement and Leadership's mission is to deliver experiences that promote student development and enhance the quality of campus life.

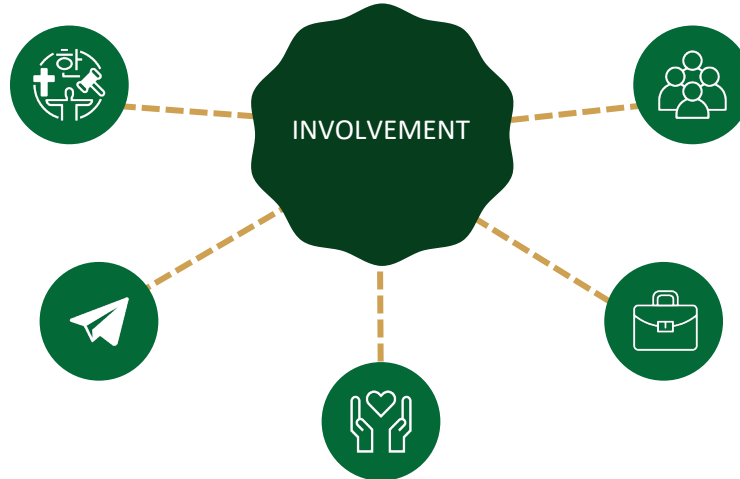
# WHY GET INVOLVED?

## CULTURAL AWARENESS

Involvement increases a student's understanding and appreciation for the differences between themselves and people from other cultures.

## EXPERIENCE WRIGHT STATE

Experience and enjoy the college experience. Students who experience value and meaning from their college experience are more likely to persist through their college experience.



## GIVE BACK

Involvement provides the framework for students to better their community through philanthropic and service behaviors.

## EXPAND SOCIAL CIRCLE

Building a community allows a student to feel more connected. Get out of the residence hall/house and make friends!

## LAND YOUR DREAM JOB?

What if we were to tell you that involvement could land you your dream job? **Yep. It's true.** Students who matriculate through their involvement and leadership experience will develop transferable skills that employers crave.



# University Libraries



WRIGHT STATE  
UNIVERSITY

ON DECK:  
CAMPUS RECREATION & CLUB SPORTS

# Paul Laurence Dunbar Library

## Who Are We?

- We are librarians, archivists, staff members and student assistants who collect, organize, preserve and provide access to scholarly resources.

## What Do We Do?

- Support teaching, learning and research in an intellectually open environment
- Provide instruction in the use of information resources and technologies
- Offer students collaborative and quiet spaces for study

# What We Offer

## Resources:

- Books and journals (print and online)
- Online databases
- Streaming audio and video
- Games, maker kits, anatomical models
- Music scores and CDs
- Course reserves

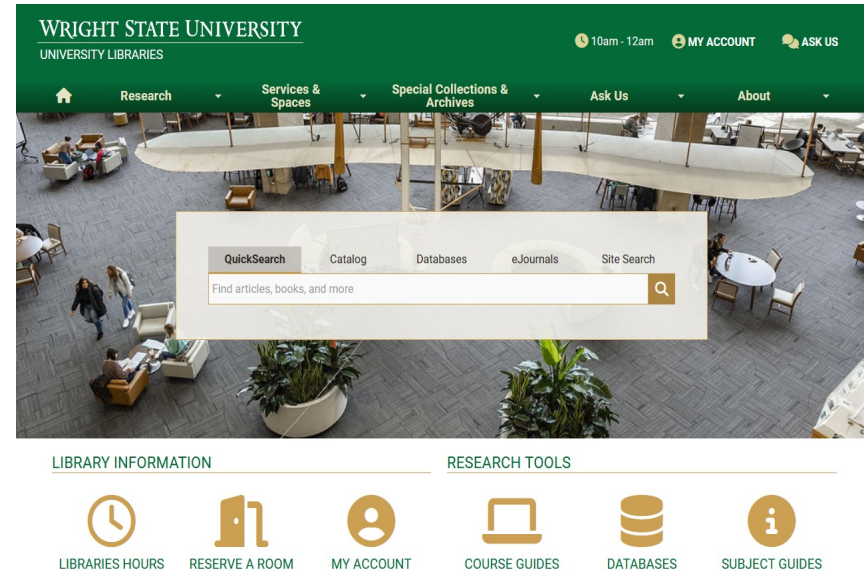
## Services:

- Research assistance in person and via e-mail or chat
- Customized library instruction for specific courses
- How-to videos and subject guides
- Computers and media studios
- Reservable rooms for individual and group study



# How To Reach Us:

- Drop In
- Email us
- Call us
- Ask Us (chat)
- Use our online help through our website



# Referring Students to Us:

## Library Account Information:

- Resource Delivery Services:
  - 937-775-2525
  - [library-rds@wright.edu](mailto:library-rds@wright.edu)

## Using or Finding Materials

- Instruction and Research Services
  - [library-dref@wright.edu](mailto:library-dref@wright.edu)
  - Ask Us chat service
- Special Collections and Archives
  - [library-archives@wright.edu](mailto:library-archives@wright.edu)



**WRIGHT STATE**  
CAMPUS  
RECREATION

&



**WRIGHT STATE**  
CLUB SPORTS



**WRIGHT STATE**  
UNIVERSITY

ON DECK:  
INCLUSIVE EXCELLENCE

## Facilities

### Memberships

Staff & Faculty: \$15/mo; \$150/yr

Family: \$20/mo; \$180/yr

Retiree & Gold Alumni: \$25/mo; \$200/yr

***Students are FREE!***

**LOCKERS AND BILLIARDS  
ARE NOW  
INCLUDED IN YOUR  
MEMBERSHIP!!!!!!**

### Student Union:

- Fitness Center
- Swimming Pool
- Student Union Gym
- Racquetball/Squash Courts
- Climbing Gym
- Table Games
- Locker Rooms

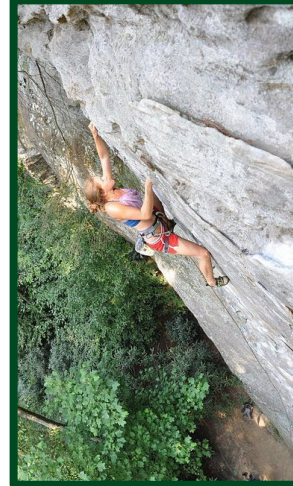
### External:

- Climbing Tower  
& Low Ropes Course
- Playing Fields
- Sand Volleyball
- Mud Volleyball
- McLin Gym
- Mulhollan Field



### PROGRAMMING

- Adapted Recreation
  - Workout Buddies & Adapted Intramurals
- Group Fitness Classes
  - 30+ Classes per week (Yoga, Spin, HIIT etc.)
- Intramural Sports
  - 20+ Leagues and Tournaments
- Outdoor Recreation
  - Trips all over the country
  - The Adventure Summit Feb. 9 & 10!



All programs register on [IMLEAGUES.COM](http://IMLEAGUES.COM)



### Club Sports (Athletics)

17 Registered Sport Clubs: Football, Cheer, Dance, Volleyball, Soccer & many more!

Open to all students; eligibility by leagues may vary (credits, GPA, etc.)

[Jake.Wells@wright.edu](mailto:Jake.Wells@wright.edu)

## Social Media & Web

Billy Willis, Associate Director [billy.willis@wright.edu](mailto:billy.willis@wright.edu)

WRIGHT.EDU/CAMPUS-RECREATION

937-775-5505

IMLeagues.com

Jake Wells, Club Sports Program Manager

[jake.wells@wright.edu](mailto:jake.wells@wright.edu)

WRIGHT.EDU/CLUB-SPORTS

937-775-2448

## @WrightStRec

- Instagram
- X (formerly known as Twitter)
- Facebook
- YouTube



**WRIGHT STATE**  
CAMPUS  
RECREATION

## @WSU\_ClubSports

- Instagram
- X (formerly known as Twitter)
- Facebook



# Division of Inclusive Excellence



WRIGHT STATE  
UNIVERSITY

ON DECK:  
VETERAN AND MILITARY CENTER



# Inclusive Excellence

## What it is?

Inclusive Excellence is defined as a strategy for transforming Wright State University into an institution that conceptualizes inclusiveness and excellence as one and the same, makes inclusiveness ubiquitous, measurably assigns responsibility for inclusiveness to everyone on campus, and utilizes a broad definition of diversity.

## Why it matters?

- Develop a campus culture that recognizes the value of diversity, equity, and inclusion.
- Understand and communicate effectively and inclusively across differences in the communities you serve.
- Earn students' trust, especially in diverse communities.

## Office of the Vice President for Inclusive Excellence



**Dr. Matthew Chaney**

*Vice President for Inclusive Excellence*



**Mia Honaker**

*Administrative Assistant to the  
Vice President for Inclusive Excellence*

## Culture and Identity Centers

### Asian and Native American (ANA) Center



**Dr. Nicolyn Woodcock**  
*Assistant Director*

### Latino Center



**Catherine Hernandez Hogan**  
*Assistant Director*

**LGBTQA Center**



**Dr. Emily Yantis-Houser**  
*Assistant Director*

**Women's Center**



**Bobbie Szabo**  
*Assistant Director*

- **Bolinga Black Cultural Resources Center**
- **Disabilities and Neurodivergence Culture Center**



**Isabel Harney-Davila**

Graduate Assistant

## Inclusion Officers

Raj Soin College of  
Business

-----  
Dr. Wakiuru  
Wamara

College of  
Engineering and  
Computer Science

-----  
Dr. Jaime  
Ramirez-Vick

Graduate Programs  
& Honors Studies

-----  
Dr. Paula  
Bubulya

College of Health,  
Education, &  
Human Services

-----  
Siobhan  
Fagan

Lake  
Campus

-----  
Dr. Josh  
Ricker

College of  
Liberal  
Arts

-----  
Dr. Jessica  
Barnett

Boonshoft School  
of Medicine

-----  
Dr. Erica  
Taylor

College of  
Science and  
Mathematics

-----  
Stephanie  
Balsom

## Division Office

016 Student Union • 937-775-2087

[inclusiveexcellence@wright.edu](mailto:inclusiveexcellence@wright.edu)

[wright.edu/inclusiveexcellence](http://wright.edu/inclusiveexcellence)

## Culture and Identity Centers

023 Student Union • 937-775-2087

[wright.edu/culture](http://wright.edu/culture)





VETERAN  
AND MILITARY  
CENTER

Seth Gordon, Ph.D., Director

Joe Young, M.P.A., University Certifying Official

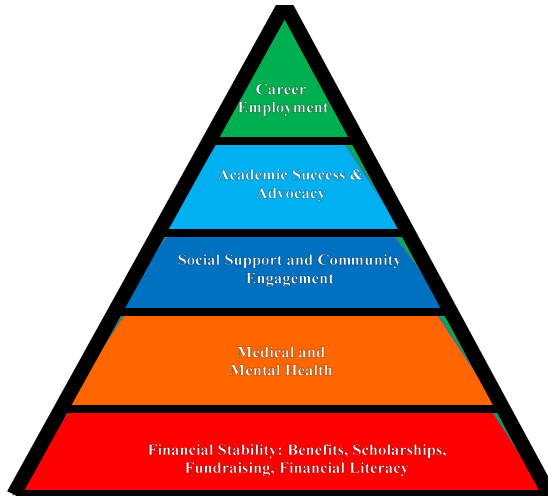
131 Allyn Hall







"We meet students where they are."



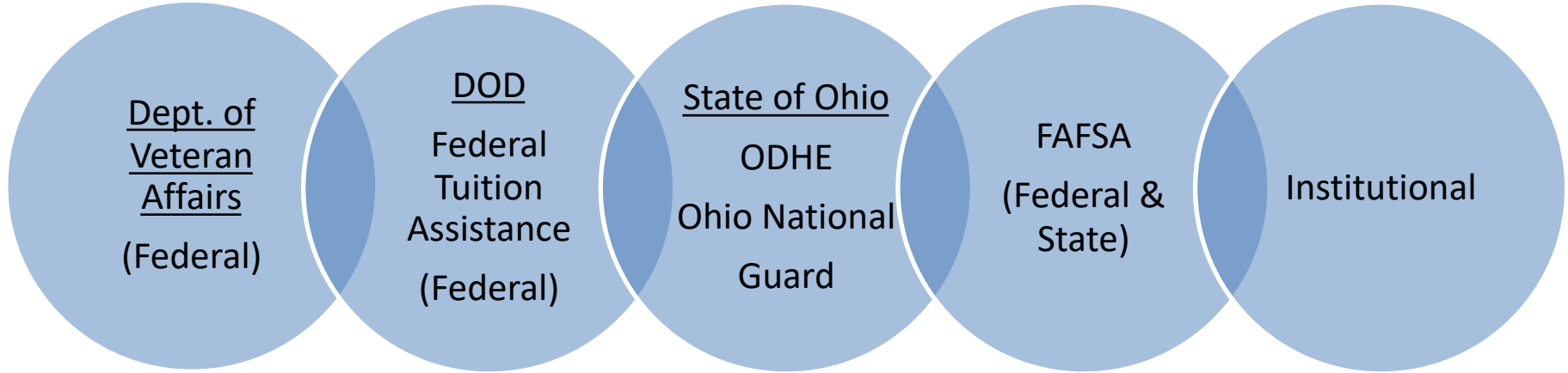
"Everyone leaves better off than when they arrived."

*"Wright State University will be an environment where veteran and military-connected students feel like they belong."*

The VMC supports Wright State veteran and military connected students in reaching their academic, professional, and personal goals by:

- The Efficient **Stewardship** of Military Educational Benefits
- Providing Academic Support and **Advocacy**
- Supporting **Career Development**
- Facilitating **Community Engagement**

# Navigating Multiple Systems



Dept. of  
Veteran  
Affairs  
(Federal)

- Chapter 30: The Montgomery GI Bill
- Chapter 31: VR & E
- Chapter 33: Post 9/11 GI Bill
- Chapter 35: Dependence Education Assistance
- Chapter 1606: The Montgomery GI Bill – Selective Reserve

DOD  
Federal  
Tuition  
Assistance  
(Federal)

- Air Force
- Army
- Coast Guard
- Marines
- Navy
- Space Force

State of Ohio  
ODHE  
Ohio National  
Guard

- Ohio War Orphans Scholarship
- Ohio National Guard Scholarship

FAFSA  
(Federal &  
State)

- Loans
- Grants
- OCOG

Institutional

- Scholarships
- Army ROTC
- Air Force ROTC



## To Become a VMC Student Champion

1. Attend a VMC Ally Training
2. Attend one Green Zone Training
3. Earn your Mental Health First Aid Certificate
4. Earn your QPR Certification – through the Department of Public Safety

All of our training opportunities are listed on Engage or on our webpage.



## Best Way to Work with the VMC

1. For GI Bill Related Questions:

- [vmc@wright.edu](mailto:vmc@wright.edu)
- [joseph.young@wright.edu](mailto:joseph.young@wright.edu)
- 937-775-5550

2. For Training Related Needs or Student Issues related to:

- Finance
- Academic Concerns
- Deployment
- Training
- “Other” Opportunities
- [seth.gordon@wright.edu](mailto:seth.gordon@wright.edu)



### Hours of Operations

8:30-5pm Mon-Thurs  
8am – 4pm Fridays

### VMC Student Space

6am – Midnight  
7 days a week



# 2024 Staff Symposium

Staff Senate would like to thank you for attending our event

Please watch your email for a post-event survey through Engage and details on the recording for future viewing

Subscribe to the Staff Senate Blog for Future Events

