



BOARD OF TRUSTEES



WRIGHT STATE
UNIVERSITY



WRIGHT STATE
UNIVERSITY



BOARD OF TRUSTEES



**WRIGHT STATE
UNIVERSITY**

President's Report Board of Trustees Meeting April 2024



Three goals. One team.

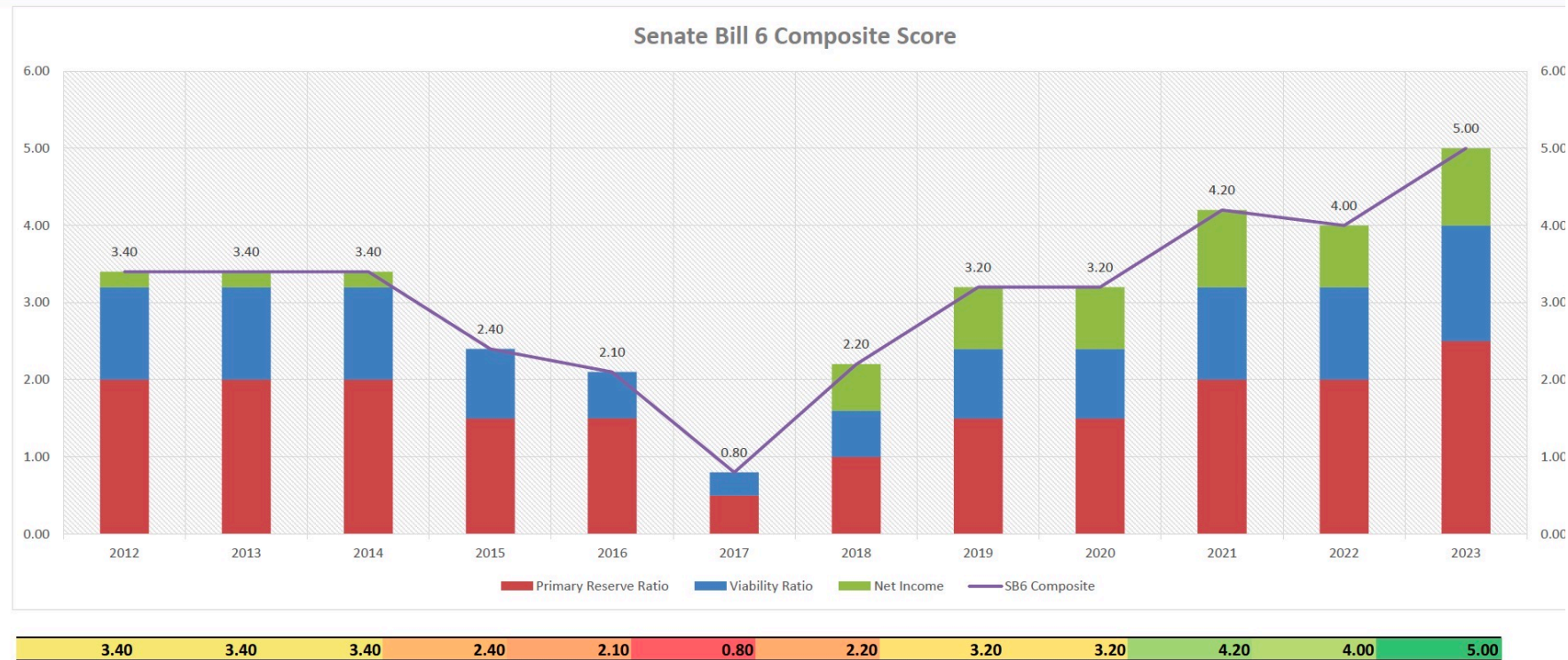
WRIGHT STATE UNIVERSITY



WRIGHT STATE
UNIVERSITY

Press Release

Moody's Ratings upgrades Wright State University's (OH) issuer and debt ratings to A2 from A3; outlook changed to stable from positive







Miracle Makers Raiderthon Raises
over \$50,000
for
Dayton Children's Hospital



Year	Amount Raised
2013	\$58,000
2014	\$61,018
2015	\$46,500
2016	\$45,695
2017	\$34,539
2018	\$58,000
2019	\$72,415
2020	\$9,680



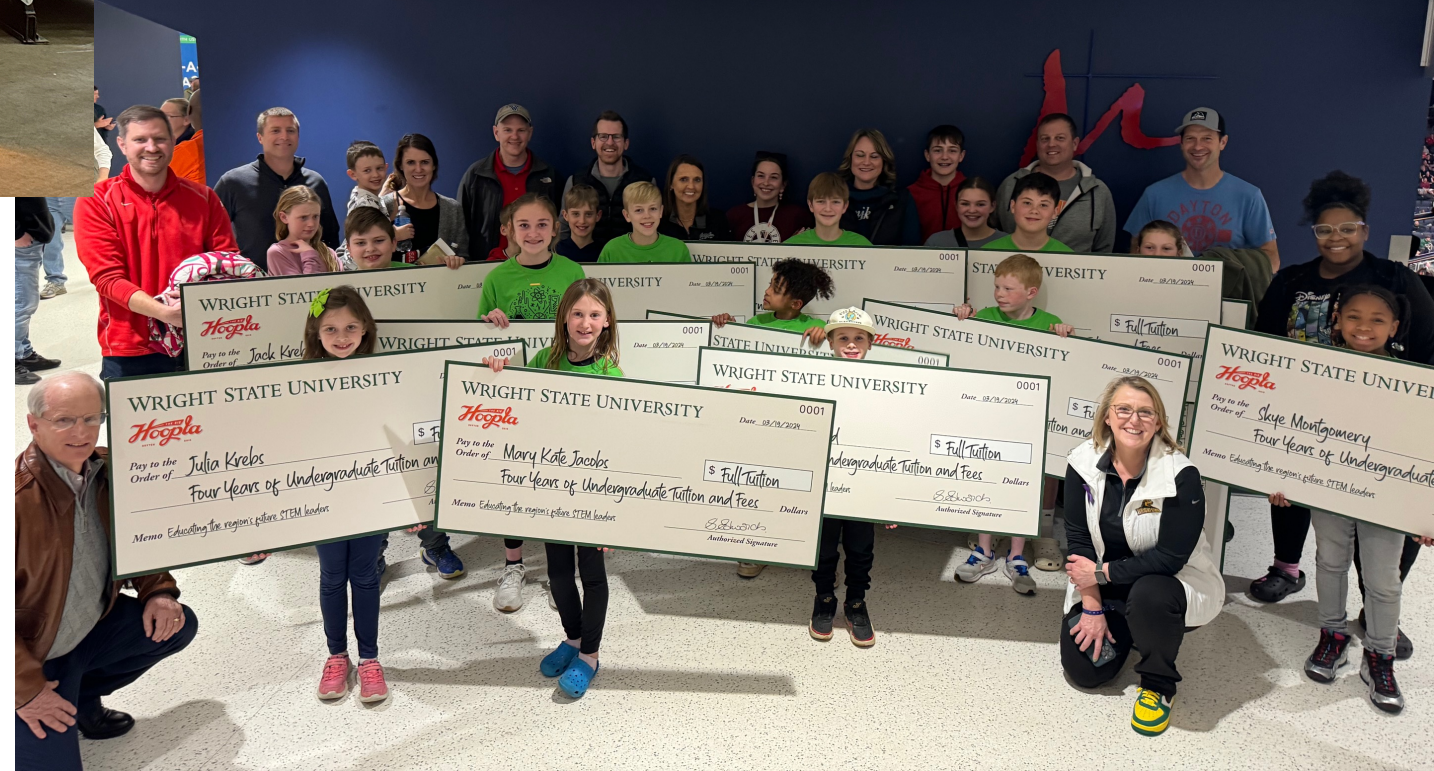
**Wright Patterson Air Force Base
Career Event**











WRIGHT STATE UNIVERSITY





BOARD OF TRUSTEES



Faculty Senate Update – '23-'24

Subhashini Ganapathy, Faculty President

Dawn Wooley, Faculty Vice President



Faculty Senate Priorities

- Create an equitable path for academic achievement
- Promote a strong collaborative partnership with the Staff Senate, SGA, and the Provost's office.
- Foster a positive and productive academic environment

Curricular Program Approvals – New Programs

- Agriculture, AAS
- Engineering Technology, BS
- Environmental Studies, BA
- Health Sciences, BS
- Interdisciplinary Studies, BA
- Interdisciplinary Studies, BS
- Modern Languages and Cultures Minor
- Exercise Science, BS
- Minors
 - Aerospace Engineering Minor
 - Environmental Studies, Minor
 - Physiology and Neurosci Minor
- Certificates
 - Exercise Oncology
 - Environmental Studies Certificate
 - Introduction to Defense Acquisition and Contracting Certificate
 - Police Academy
 - Exercise Oncology Certificate
- Graduate Microcredentials
 - Basic Geographic Information Science
 - Basic Remote Sensing
 - Intermediate Geographic Information Science
 - Intermediate Remote Sensing
 - Introduction to User Experience (UX) and Design Thinking
 - Six Sigma Green Belt
 - Total Quality Management and Lean Supply Process
 - Toxicology
 - Unconventional War
- Undergraduate Microcredentials
 - Basic Geographic Information Science
 - Basic Medical French for Health Professions
 - Basic Medical Spanish for Health Professions
 - Basic Remote Sensing
 - Diversity in Crime and Justice Studies-Basic
 - Diversity in Crime and Justice Studies-Intermediate
 - Forensic Studies-Basic
 - Forensic Studies-Intermediate
 - Intermediate Geographic Information Science
 - Intermediate Remote Sensing
 - Quality and Process Management
 - Unconventional War

Curricular Program Approvals – Modifications, Deactivations/Terminations

• Modifications

- Information Systems, MIS
- Public Health, MPH
- Computer Engineering, BSCE
- Computer Science, BSCS
- Crime and Justice Studies, BA
- Emergency Management Minor
- General Studies, AA
- Integrated Science Studies, BS
- Management Information Systems, BSB
- Modern Languages and Cultures Certificate
- Police Science - Police Academy, AAS
- Technical Study, ATS
- Organizational Leadership, BS

• Deactivations & Terminations (Grad)

- Applied Behavioral Science, MA
- Applied Mathematics, MS
- Applied Statistics, MS
- BIO: Enviro Sci MS
- Chem:Enviro Sci MS
- Classroom Teacher, Learning and

Motivation, MEd

- History, MA (concentration)
- Interdisciplinary Science and Mathematics, MST
- Marriage and Family Certificate
- Multi-Age, MEd
- Music, MM
- Physics, MST
- Principalship, Med
- Rehabilitation Counseling, MRC
- Selected Graduate Studies, MA
- Selected Graduate Studies, MS
- Teaching College Composition Certificate
- Accountancy, MAcc
- Innovation and Entrepreneurship Certificate

• Deactivations & Terminations (UG)

- Art History, BA
- Chemistry, AS
- Digital Media and Writing Certificate
- Dual Major in Physics and Mathematics, BS
- Electrical Engineering Pre-Law – B.S.E.E.

- Electrical Engineering Pre-Med – B.S.E.E.
- Engineering Physics – B.S.E.P.
- French, BA
- Innovation and Entrepreneurship Certificate
- Intervention Specialist, BSEd (concentration)
- Nursing Completion, BSN
- Nursing, BSN - Alternative Pre-Licensure Pathway
- Public Health Education, BSEd
- Spanish, BA
- Technical Study, AAS, Law Enforcement Academy Concentration
- Urban Affairs, BA
- Combined Crime and Justice Studies, BA & Applied Behavioral Science, MA
- Combined Sociology, BA & Applied Behavioral Science, MA

University Policy

- Approved
 - Policy 3160 - Wright Path Program
 - Policy 3710.2 – Artificial Intelligence
 - Policy 4130 – Wright State Core
 - Policy 4250 - Inclusive Excellence and Global Inquiry Course Development and Approval
 - Policy 4275 - Deactivation, Reactivation, and Termination of Programs
- Policy 5070.3 – English Proficiency
- Policy 5120.4 – Tuition Remission
- Upcoming - Fall 2024
 - Additional Core policies
 - Grade Appeal Policy
 - Latin Honors

AY2024-25 Faculty Senate

Faculty President

Dawn Wooley (2025)

Faculty Vice President

TBD by special election - Fall 2024

Faculty Senate Parliamentarian

Melissa Spirek

Business, Raj Soin College of

Kerry Martin (2025)

Kevin Willardsen (2025) (EC)

Engineering & Computer Science, College of

Thomas Wischgoll (2025) (EC)

Zifeng Yang (2026)

Lake Campus

Josh Ricker (2025) (EC)

Teresa Richter (2026)

Liberal Arts, College of

Jessica Barnett (2025)

Mary Rucker (2025)

Vaughn Shannon (2025) (EC)

Glen Cebulash (2026)

Medicine, Boonshoft School of

Terry Oroszi (2025)

Marc Raslich (2025)

Eric Bennett (2026) (EC)

Simranjit Gill (2026)

Science & Mathematics, College of

Yvonne Vadeboncoeur (2025)

Pamela Garverick (2025)

Debra Steele-Johnson (2026) (EC)

Andrew Voss (2026)

Health, Education, and Human Services, College of

Vicki Evans (2025)

Mindy McNutt (2026)

Sheri Stover (2026) (EC)

Term expires at the end of Spring semester of the indicated year.

(EC) – Executive Committee member



BOARD OF TRUSTEES



WRIGHT STATE
UNIVERSITY



BoT Student Update

Madisyn Crabtree & Chris Jenkins
April 26, 2024



WRIGHT STATE
UNIVERSITY

Greek Life



SIL, Raiderthon, ODK



Student Leader Awards



Athletics

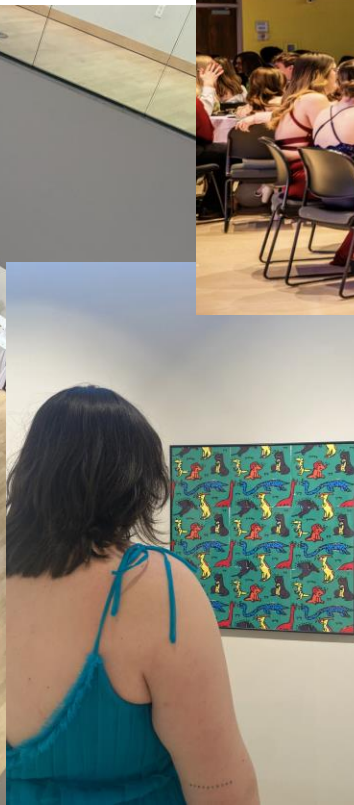


April Craze



WRIGHT STATE UNIVERSITY

Arts Gala/All Greek Formal



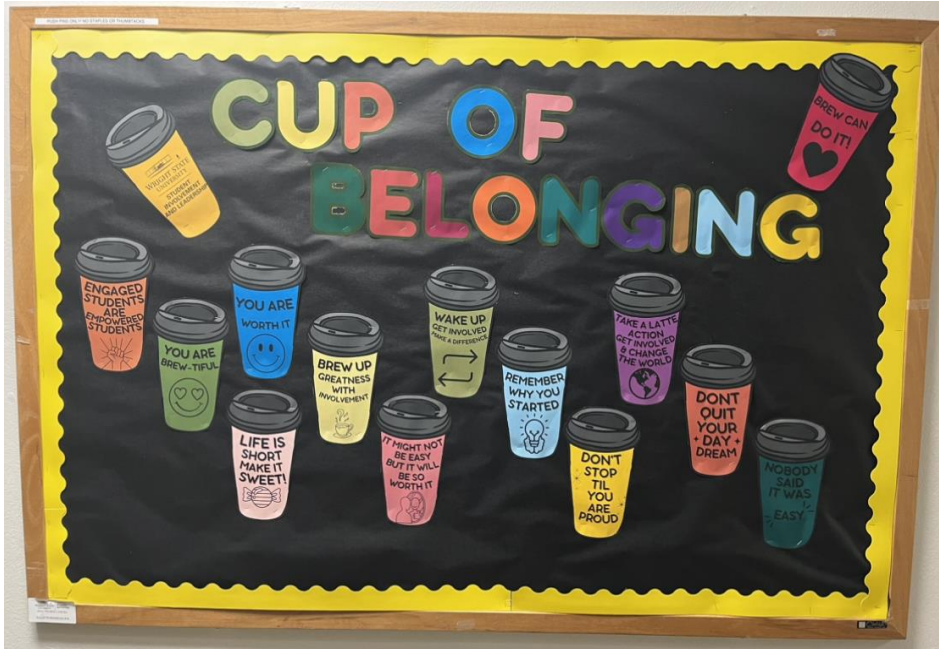
Eclipse



Student Government Association



Upcoming Events and News



Questions?

Comments?





BOARD OF TRUSTEES



**WRIGHT STATE
UNIVERSITY**



Building Strategic Value Together

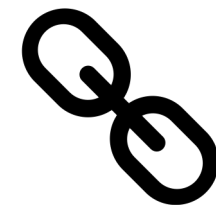
Board of Trustees Update

April 26, 2024

Premier Health – WSU: Plan for Shared Value Creation

Vision: Together Premier Health and Wright State University will advance academic medicine, improve community health, bolster workforce and economic development and become the destination for future health professionals through offering unparalleled academic and experiential learning environments.

Align/Integrate areas of strategic interest such as educational and clinical programs, physician practice, research, administration and operations



Specific Vision: Together Premier Health and Wright State University will partner in a way that positions Premier to be formally recognized as an academic health system serving the Dayton Region.

Academic Health Systems:

- Have hospitals aligned and integrated with a medical school.
- Serve as the main location for training medical students, medical residents and fellows.
- Offer higher levels of specialized care that involves more advanced and complex procedures and treatments.
- Have physicians who are recognized as specialists in their fields and who play a critical role in advancing medicine by training the next generation of medical professionals.
- Invest in research, education, and advanced technologies to offer specialized services and innovative treatments not available at other hospitals.



An Established Opportunity



Only about 300 of the 6,090 hospitals in the United States are academic health systems and the Dayton Region is the only major metropolitan area in Ohio not benefitting from a formal partnership between a health care system and an academic institution.

We are Here



December
Resolution to move forward approved. Public announcement of intent to enhance existing partnership

Over 100 formal group meetings
Innumerable one on one interactions
Guided by GCs and Manatt Consulting

April 23
Enhanced Affiliation Agreement approved by Premier Board of Trustees

April 26
Enhanced Affiliation Agreement considered by WSU Board of Trustees

April 30, 2024
Agreement Execution (Pending Approval)

Working DRAFT Updated 12.7.23.

RESOLUTION SUPPORTING AN ENHANCED ACADEMIC AFFILIATION BETWEEN WRIGHT STATE UNIVERSITY AND PREMIER HEALTH

WHEREAS, Premier is a mission-based, nonprofit healthcare organization, operating the largest comprehensive health system in service of southwest Ohio; and

WHEREAS, Wright State is a student-centered, public university located in southwest Ohio that operates the Boonshoft School of Medicine and the WSU College of Health Education and Human Services as well as other related ancillary academic programs; and

WHEREAS, the Parties established an affiliation agreement in 2021 which aligned the goals of Premier and Wright State in

- Improving the delivery of academic medicine to the community;
- Enhancing the training of physicians and other healthcare professionals;
- Recruiting and retaining the top medical and healthcare leaders;
- Expanding and leveraging the capabilities of the Boonshoft School of Medicine and the WSU College of Health Education and Human Services.

WHEREAS, the Parties believe the partnership established in 2021 can be expanded and have established a vision to advance academic medicine, improve community health, bolster workforce development, and become the destination for future health professionals through unparalleled academic and experiential learning environments, and

WHEREAS, the Parties wish to implement the steps necessary to enhance the existing Agreement, along with other related ancillary agreements in order to establish a long-term, strategic, integrated and comprehensive relationship.

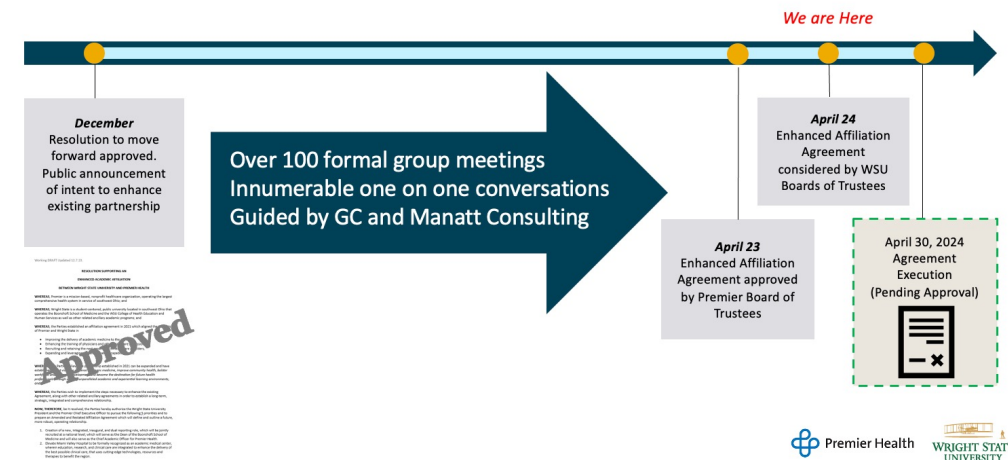
NOW, THEREFORE, be it resolved, the Parties hereby authorize the Wright State University President and the Premier Chief Executive Officer to pursue the following 5 priorities and to prepare an Amended and Restated Affiliation Agreement which will define and outline a future, more robust, operating relationship.

1. Creation of a new, integrated, inaugural, and dual reporting role, which will be jointly recruited at a national level, which will serve as the Dean of the Boonshoft School of Medicine and will also serve as the Chief Academic Officer for Premier Health.
2. Elevate Miami Valley Hospital to be formally recognized as an academic medical center, wherein education, research, and clinical care are integrated to enhance the delivery of the best possible clinical care, that uses cutting-edge technologies, resources and therapies to benefit the region.

Where We Are

Wright State's School of Medicine launched in 1973

Miami Valley Hospital began serving as a primary teaching hospital for the school in 1976



Today - Premier Health facilities support training for 12 different BSOM sponsored residencies and 14 subspecialty fellowships in different disciplines.

Enhanced Affiliation Agreement



Affiliation Agreement Key Points

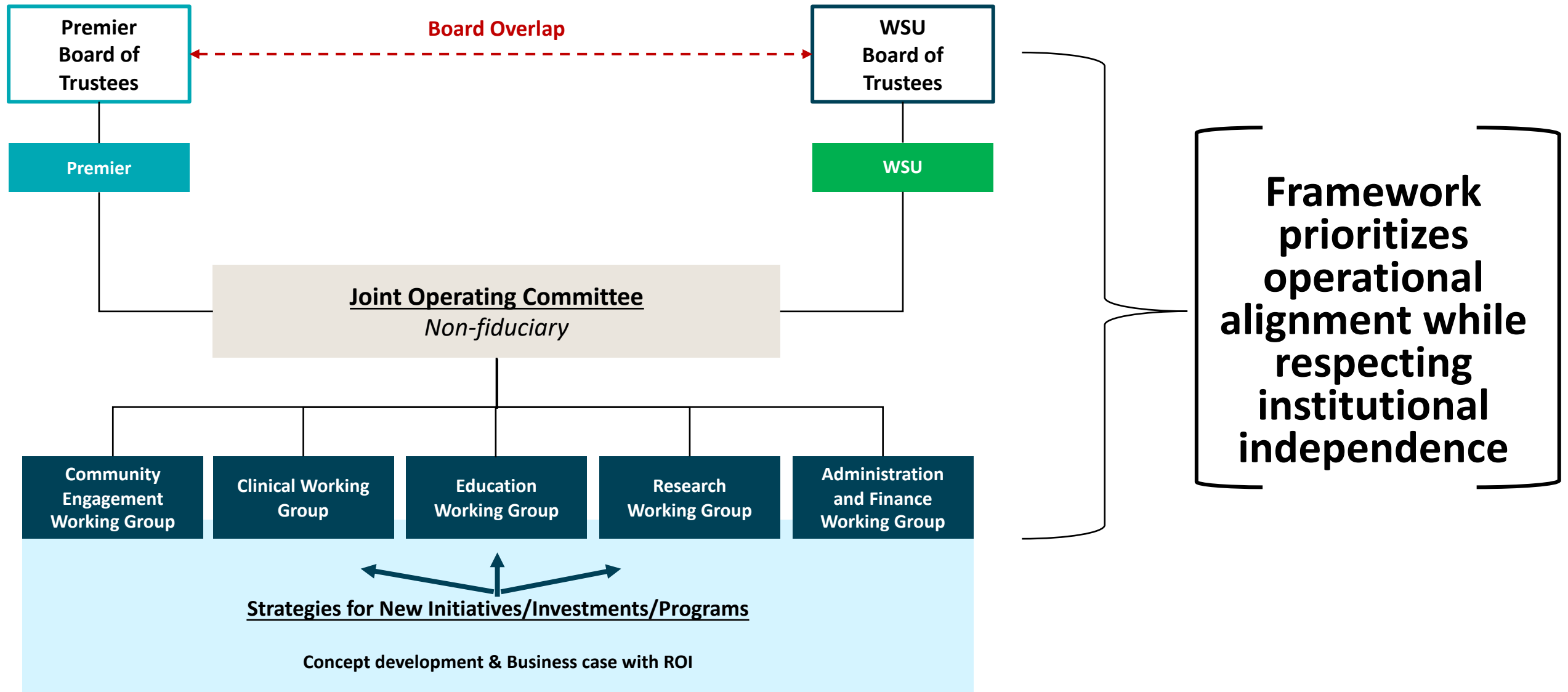
- **Alignment** - WSU shall be the primary academic affiliate of Premier, and Premier shall be the primary AHS/clinical training site affiliate of WSU
- **Term** – 30 years
 - Formal review annually by both Board Chairs and Presidents
 - Formal comprehensive review every 3 years by full Boards
- **Governance & Leadership Interlock**
 - ◆ WSU Trustee placed on the Premier Board and Premier Trustee placed on WSU Board
 - ◆ WSU President placed on the Premier Patient Experience Board Committee and Premier's CEO placed on WSU Board's Special Committee on Medicine & Health
 - ◆ Premier's Chief Clinical Officer placed on the Boonshoft SOM Executive Committee
 - ◆ Joint appointment of Boonshoft SOM Dean/Premier Chief Academic Officer (CAO)

Affiliation Agreement Key Points

- **Structure** – The Affiliation will be operationalized through the establishment of
 - an equal membered Joint Operating Committee
 - working groups under the Joint Operating Committee with specific areas of focus
 - measurable milestones to assure progress and accountability

- **Support** - Premier will provide dedicated mission support to Wright State for addressing existing opportunities such as the current critical nursing shortage, expanding BSOM class size to increase the availability of physicians in the marketplace as well as growing new programs among other things.

Governance Structure / Framework



Joint Operating Committee Charter

The JOC is charged with accomplishing the following goals:

Organizational Strategy: The JOC will oversee the development of a joint strategic plan, make recommendation for its adoption, and be responsible for its' successful implementation within targeted timeframes.

Operations: The JOC will:

1. Serve as the official forum for facilitating the day to day partnership between Premier and Wright State.
2. Define the role and duties of each working group.
3. Be responsible for implementation and performance of all existing and new programs carried out through the affiliation.
4. Facilitate educational, training, and mentoring initiatives throughout both organizations as they relate to the operationalizing the affiliation.
5. Make recommendation to each institution for new investments, and the continuation of existing investments.
6. Report out the community impact - academic, clinical, research, community engagement and economic - across all dimensions of the partnership.

The JOC shall meet at least monthly. The JOC will be comprised of 11 members, 10 split evenly (50/50) between the organizations as assigned by the President of WSU and President & CEO Premier Health, plus the BSOM Dean & Premier Chief Academic Officer who will serve ex-officio.

Why?

- **BETTER LEARNING ENVIRONMENT** - academic health systems are proven to provide a deeper, more robust learning environment for students
- **ENHANCED AND EXPANDED CARE** - academic health systems are proven to enhance the delivery of care (outcomes) and grow specialty care. That reduces out migration and affords people a wider array of clinical services closer to home.
- **NEW DEGREE FIELDS & JOB OPPORTUNITIES** - The expanded partnership will invest in a variety of new academic offerings with demonstrated job demand which benefits the community and provides new employment opportunities for graduates
- **MAXIMIZE RESOURCING** - Federal & State payors like CMS recognize the value and importance of academic health systems in the healthcare delivery chain and provide additional financial support which is then driven back into the community and services offered by the provider.

An Established Opportunity



The Dayton Region is the only major metropolitan area in Ohio not benefitting from such a partnership.

The 4 existing metropolitan areas with similar partnerships in place draw over \$500M of enhanced reimbursements to their communities.

Resolution – Recommending Approval





BOARD OF TRUSTEES



WRIGHT STATE
UNIVERSITY