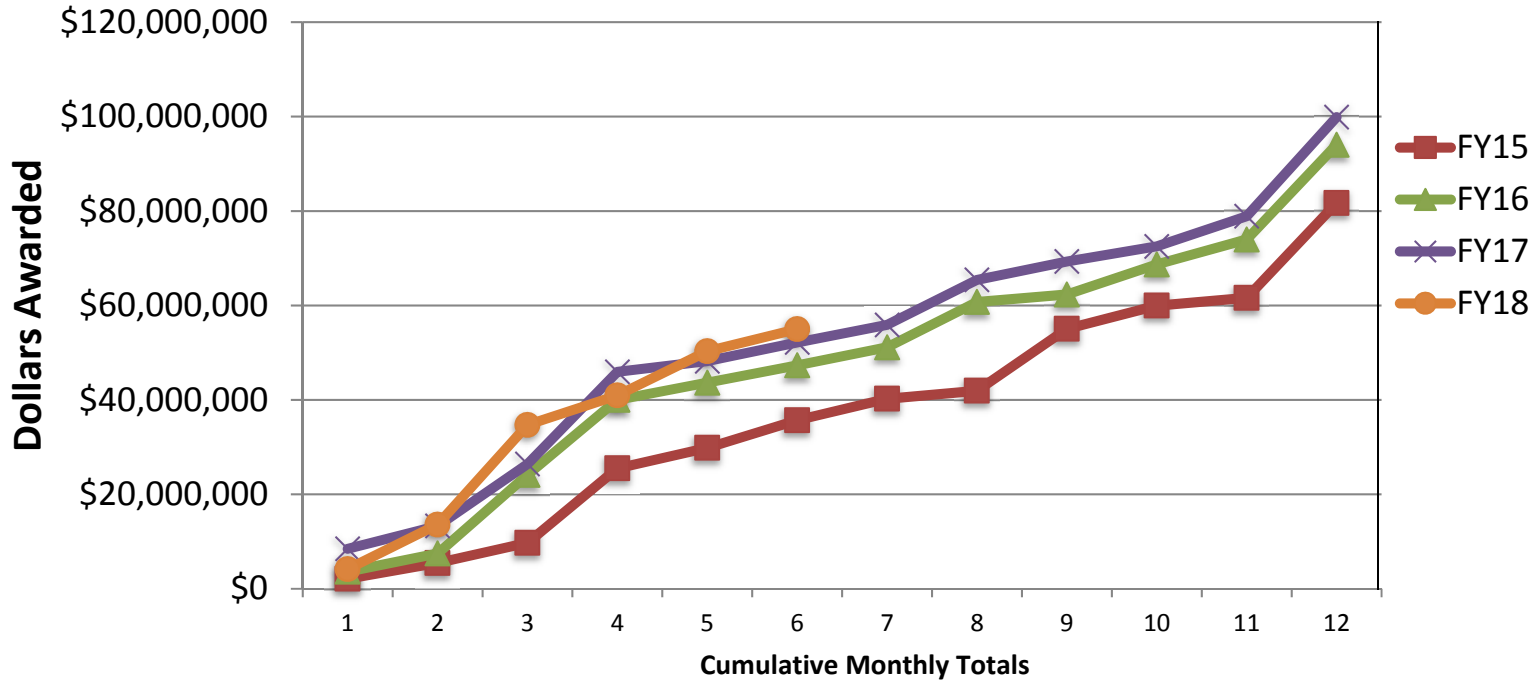


**Research Report to the Board of Trustees  
Academic Affairs Committee  
January 19, 2018**

**Ellen Reinsch Friese  
Interim Vice President for Research**



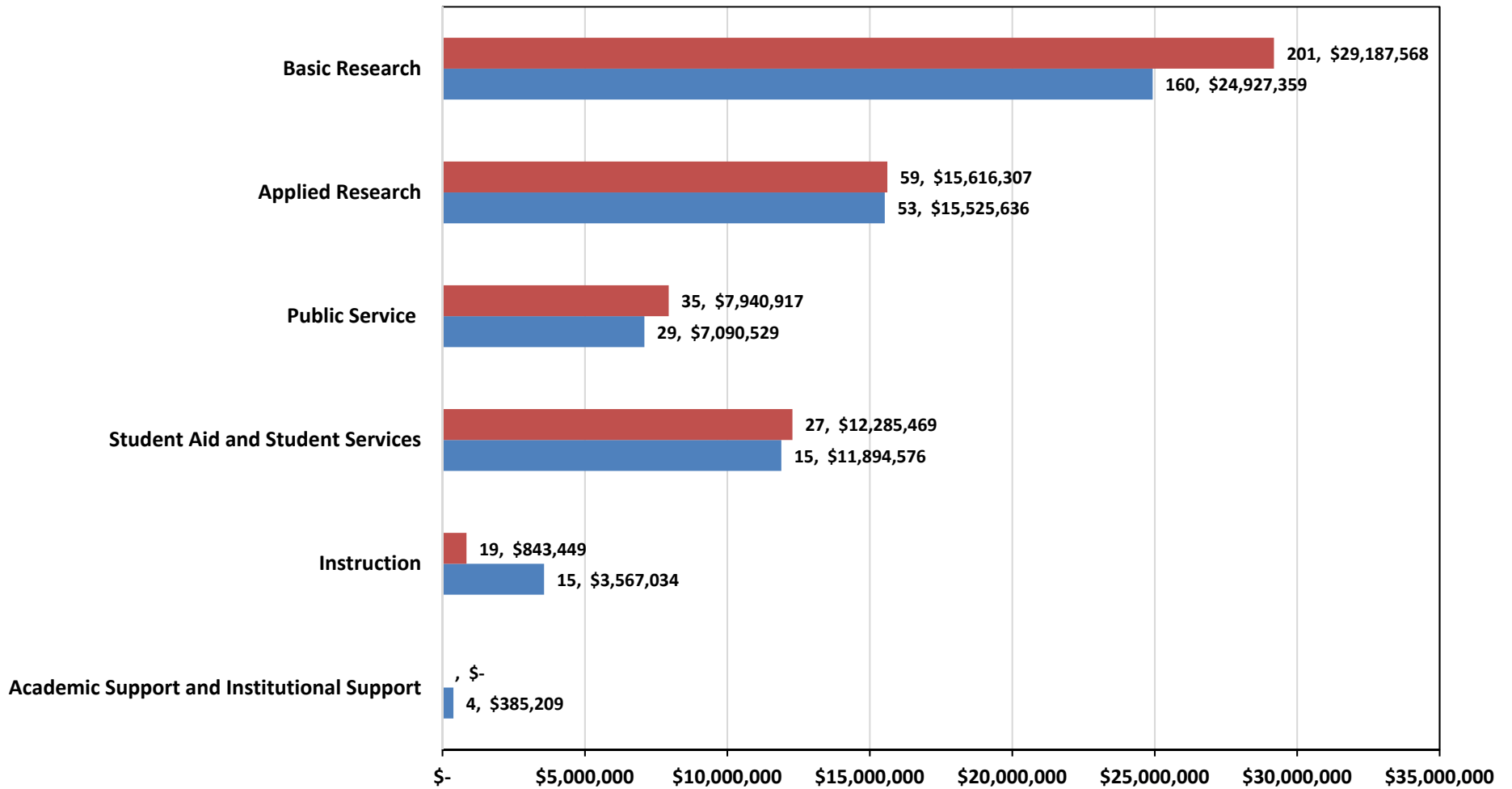
**WRIGHT STATE UNIVERSITY**  
**Cumulative Grant and Contract Awards**  
**Comparison with Previous Three Fiscal Years through December**



FY18 through 12/31/17: \$54,996,444  
 FY17 through 12/31/16: \$52,172,953  
 FY16 through 12/31/15: \$47,330,300  
 FY15 through 12/31/14: \$35,691,005

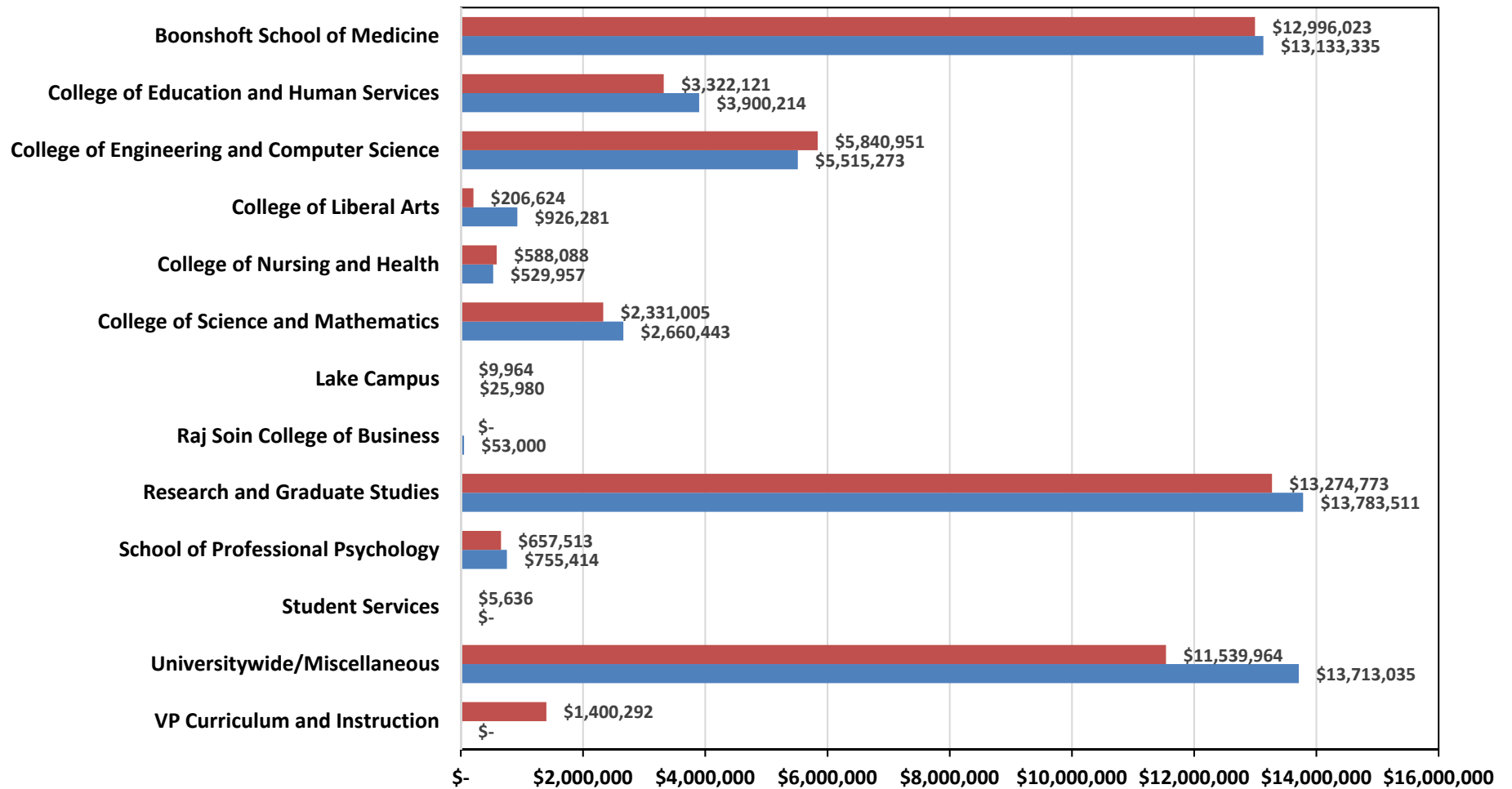
## PROPOSALS SUBMITTED BY TYPE OF ACTIVITY

■ July 1, 2016 to Dec. 31, 2016: \$65,873,710 (341)     
 ■ July 1, 2017 to Dec. 31, 2017: \$63,390,343 (276)



## GRANTS AND CONTRACTS AWARDED BY COLLEGE

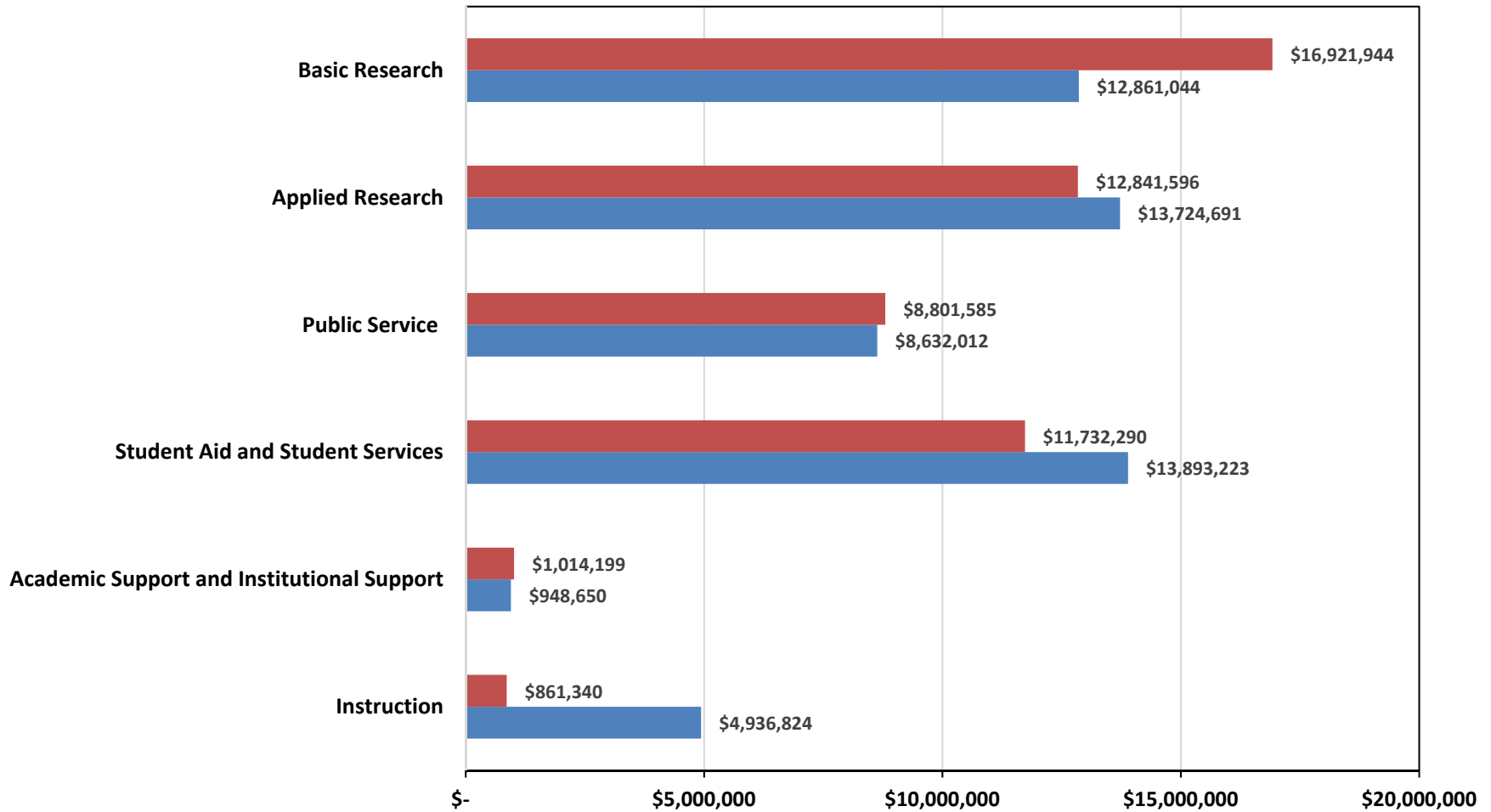
■ July 1, 2016 - Dec. 31, 2016: \$52,172,953     
 ■ July 1, 2017 - Dec. 31, 2017: \$54,996,444



## GRANTS AND CONTRACTS AWARDED BY TYPE OF ACTIVITY

■ July 1, 2016 to Dec. 31, 2016: \$52,172,953

■ July 1, 2017 to Dec. 31, 2017: \$54,996,444



**Wright State University**  
**Grant Expenditures Summary by College\***  
**For FY18 as of December 31, 2017**  
**With Comparative totals for FY17 as of December 31, 2016**

College/Unit	FY18	FY17	Variance (fav/(unfav))	% Variance
BSOM	\$ 8,286,300.16	\$ 5,680,700.54	\$ 2,605,599.62	45.87%
CECS	5,838,622.41	2,832,200.26	3,006,422.15	106.15%
CEHS	1,733,528.07	1,469,481.41	264,046.66	17.97%
COLA	283,150.88	421,819.05	(138,668.17)	-32.87%
CONH	226,958.36	204,323.77	22,634.59	11.08%
COSM	2,161,384.56	2,088,840.22	72,544.34	3.47%
RSCB	120,270.90	136,867.05	(16,596.15)	-12.13%
SOPP	387,348.46	412,805.80	(25,457.34)	-6.17%
VPRG	7,213.95	251,387.56	(244,173.61)	-97.13%
Other	12,013,787.78	12,652,837.36	(639,049.58)	-5.05%
<b>Total Main</b>	<b>\$ 22,772,265.37</b>	<b>\$ 20,470,562.48</b>	<b>\$ 2,301,702.89</b>	<b>11.24%</b>
Lake	\$ 59,618.93	\$ 18,880.75	\$ 40,738.18	215.77%
WSRI	\$ 2,476,133.55	\$ 6,233,006.43	\$ (3,756,872.88)	-60.27%
<b>Total Expenditures</b>	<b>\$ 33,594,318.01</b>	<b>\$ 32,403,150.20</b>	<b>\$ 1,191,167.81</b>	<b>3.68%</b>

\* Grant Expenditures on RSP Counted Awards Only