

YOU BELONG **HERE**

SUMMER 2024 HOUSING GUIDE FOR INTERNATIONAL STUDENTS

[WRIGHT.EDU/HOUSING](https://wright.edu/housing)

Ready to immerse yourself in the Wright State experience? Our vibrant on-campus apartment options are affordable, convenient, and a great place to live and learn. Living on campus means you are just a short walk away from your classes and academic resources, campus activities, delicious dining options, and more. You will feel at home in housing options that fit your unique needs and lifestyle.

We know the importance of being able to plan for your college expenses in advance. At Wright State:

- › Your housing rates are all-inclusive, so you know exactly how much you will pay each month.
- › Your utilities and high-speed internet are included, so you can ensure you have everything you need to excel in your studies and stay connected to the world.

APARTMENT AMENITIES

Our on-campus apartments offer many of the same amenities you would expect at nearby apartment communities, but with the safety, convenience, and student-friendly housing agreements found right here at Wright State.

Amenities include:

- › Full kitchen and living room (meal plans are not required for apartment residents)
- › Access to washer/dryer
- › Streaming television service and internet access
- › Air conditioning
- › Outdoor recreation featuring basketball courts, disc golf, and fitness trail
- › 24-hour fitness center

See for yourself why Wright State campus housing is the right fit for you.
Visit wright.edu/housingtour to take a virtual tour of our on-campus apartment options.

SUMMER 2024 APARTMENTS INFORMATION AND RATES

ROOM TYPE	SUMMER SEMESTER COST
Renovated Quad (4 person) *	\$2,190
Quad (4 person) *	\$1,650
Forest Lane two bedroom (2 person) ★	\$1,650
Double-Occupancy Quad: Single (6 person) ☀	\$1,320
Double-Occupancy Quad: Double (6 person) ☀	\$990

Quad apartments are furnished and feature four bedrooms and two baths.

* Quad apartments house four students, each with their own bedroom.

★ Forest Lane features three different two bedroom floor plans and houses two students.

☀ Double-Occupancy Quads house six people—two single-occupancy bedrooms and two double-occupancy bedrooms.

NEED TO MOVE IN EARLY?

Limited spaces are available for immediate move in. If you would like to move in early, contact housing@wright.edu.

READY TO APPLY FOR HOUSING?

- 1 Log in to **WINGS Express** with your campus username (e.g. w000abc) and password.
- 2 Select **Student and Financial Aid**.
- 3 Select **Housing Services**.
- 4 Select **Continue to My Housing Account**.
- 5 Select **Apply Now**.
- 6 Submit the required prepayment to complete your application process.

If you need assistance logging in, call the Help Desk at 937-775-4827.

WANT TO STAY BEYOND SUMMER?

Summer housing is available from May to July. Submit a separate application to reserve your space for academic year 2024–25.

NEED MORE TIME TO DECIDE WHERE YOU WANT TO LIVE THIS SUMMER?

Take advantage of our 30-day temporary housing option. Move in anytime and enjoy a 30-day stay in The Woods, a residence hall community that features a microwave (no stove/oven), mini refrigerator, and suite-style bathroom. The bathroom will be shared with an adjoining room of students of the same gender.

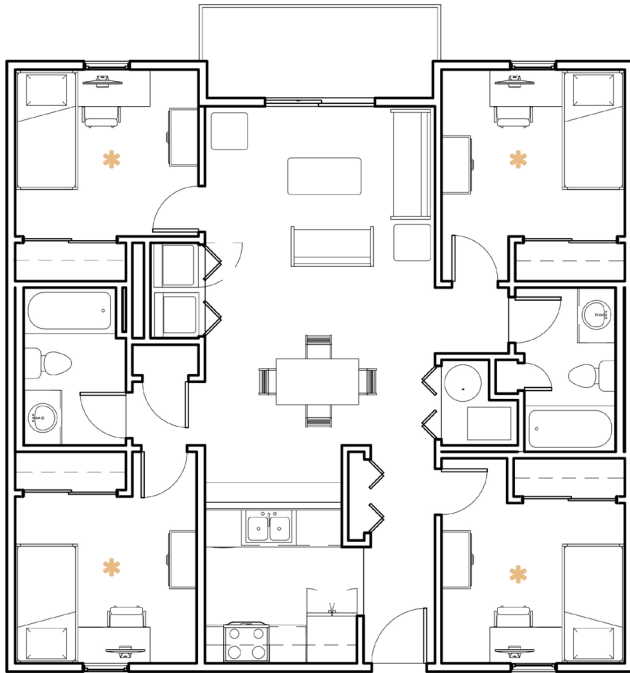
Visit wright.edu/TemporaryHousing to submit a guest housing application. Before you arrive, you must pay a flat rate of \$675, and your 30-day commitment will begin on the day you arrive. The standard \$250 guest housing deposit will be waived for you as an international student.

If you decide to stay beyond your 30-day temporary housing commitment, you can submit a Summer Semester housing application, and your housing cost will be prorated for the remainder of the semester based on your arrival date. *Please note: this option may require you to move into a different room.*

WRIGHT STATE UNIVERSITY

PARK APARTMENTS FLOOR PLANS

QUAD AND RENOVATED QUAD B, C, D (4-PERSON)

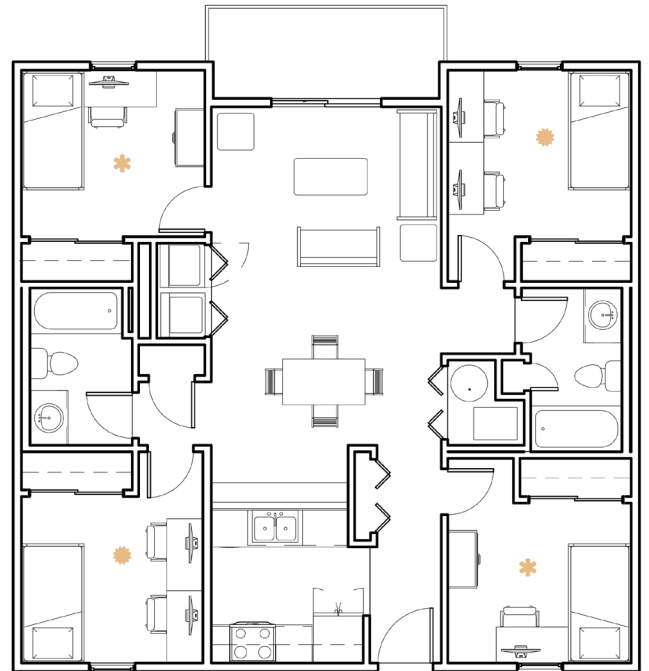


* Single-Occupancy Bedroom

Students per bedroom: one

- › Bedroom: 9' 1" x 10'
- › Window size: 35" x 59"

QUAD B, C, D (6-PERSON)



* Single-Occupancy Bedroom

** Double-Occupancy Bedroom

Students per bedroom: two double-occupancy bedrooms and two single-occupancy bedrooms in each 6-Person Quad (6 people)

- › Bedroom: 9' 1" x 10'
 - › Window size: 35" x 59"
- Double-occupancy bedrooms include:
- › Two beds (bunked)
 - › Two desks
 - › Two dressers (two drawers)
 - › One closet

