

# RESEARCH NEWS

From the Office of Research and Sponsored Programs - Serving the Research Community of Wright State University

Spring/Summer 2014 Vol. 45 No. 2

## Winners Announced for the 2014 Annual Research Initiation and Professional Development Grants

The Wright State University Research Council recently convened to review submissions to its 2014 competition for the Research Initiation and Professional Development Grant Programs. The Council received 46 quality proposals for funds to support new lines of research, as well as diverse scholarly activities and professional renewal. The Research Council would like to extend its congratulations to the awardees of the 13 selected projects:

### Research Initiation

<b>Mark Cubberley</b> <b>Turnbull, Kenneth</b>	LC	<i>Design, Synthesis, and Self-Assembly of a Novel DNA Mimic</i>	\$17,600
<b>Roxanne DuVivier</b> <b>McNutt, Mindy</b>	CEHS	<i>Sexual Assault Climate Research Project</i>	\$9,800
<b>Sheng Li</b>	CECS	<i>An Experimental Investigation of the Influence of Surface Roughness on Scuffing Failure of Lubricated Point Contacts</i>	\$11,700
<b>Jeffrey Peters</b>	COSM	<i>Population Genomics of Dabbling Ducks</i>	\$20,000

### Professional Development

<b>Stephanie Davis</b>	CEHS	<i>Institutional Practices that Promote the Retention and Completion of International Students in Higher Education</i>	\$2,100
<b>Subhashini Ganapathy</b>	CECS	<i>Big Data Analysis Training- Cloudera: Using Pig, Hive, and Impala with Hadoop</i>	\$1,000
<b>Awad Halabi</b>	COLA	<i>Research in Jerusalem and Amman</i>	\$1,500
<b>Joe Houpt</b>	COSM	<i>New Working Memory Capacity Measures</i>	\$3,000
<b>Jeannette Marchand</b>	COLA	<i>The Dorsati Survey Project</i>	\$3,000
<b>Danielle Rante</b>	COLA	<i>Fading Land: Collaborations with an Island</i>	\$1,200
<b>Shu Schiller</b>	RSCOB	<i>Harvard Leadership Program: Inner Strengths of Successful Education Leaders</i>	\$3,000
<b>Janece Warfield</b>	SOPP	<i>AF - CBT Training</i>	\$1,500
<b>Jonathan Winkler</b>	COLA	<i>Wiring the World: How the United States Built its Imperial Communication Network.</i>	\$1,000

#### IN THIS ISSUE...

<i>Notes From The AVP</i> .....	pg 2
<i>PreAward NEWS</i> .....	pg 3
<i>Electronic Submission</i> .....	pg 4
<i>Post Award NEWS</i> .....	pg 5
<i>Sponsor ALERTS</i> .....	pg 6
<i>AWARDS</i> .....	pg 12

# NOTES from the AVP

It is hard to believe spring semester is behind us. Before we turn our attention to summer projects, we would like to reminisce a little about the past few months.

RSP staff members continue to work on the implementation of the InfoEd modules for Sponsored Programs Information Network (SPIN), Proposal Development, Proposal Tracking, and Financial Conflict of Interest. Behind the scenes, we have been assisted by Mark Wyson and David McMeans of the Wright State Research Institute. Their technical expertise has been invaluable. Look for more training opportunities as we continue to roll out these new tools. If your department or group of researchers would prefer individualized sessions, we would be happy to oblige.

The fifth annual Celebration of Research, Scholarship, and Creative Activities was held on Friday, April 11, and we were pleased to welcome more than 100 enthusiastic presenters from a wide range of disciplines. This was a wonderful opportunity for students to tout their research and creative endeavors and judging by the number of visitors to the Apollo Room, it was a success. We would like to extend a special thanks to our sponsors, Peerless Technologies, Barnes and Noble, Mound Laser and Photonics, the Wright State Research Institute, and Heraeus. The book of abstracts for the event is posted at the University Library's CORE Scholar site: [http://corescholar.libraries.wright.edu/urop\\_celebration/7/](http://corescholar.libraries.wright.edu/urop_celebration/7/).

On Friday, April 18, the Office of the Vice President for Research hosted a day-long seminar entitled "Write Winning Grant Proposals" presented by Dr. Peg AtKisson of Grant Writers Seminars and Workshops, LLC. As the date approached and the interest grew, we began to wonder if the reserved room would have the capacity to hold the projected number of participants. This is a good problem, right? Overall, the seminar was a success, as our researchers left the session excited about the speaker and content of the presentation. We want to ensure that we continue the momentum, so look for future opportunities for grant writing working groups and other related presentations.

The summer is shaping up to be active, too. The federal government made good on its promise to streamline their guidance on administrative requirements, cost

principles, and audit requirements for federal awards. This will take the form of "uniform guidance," but it will be up to institutions to interpret the guidance, review and revise policies and procedures and train their campus communities. We have an implementation deadline of December 26, 2014, and a team already in place to review the massive document and identify the changes applicable to our institution. With the help of the Council on Governmental Relations and our in-house experts, we should be well on our way to developing an implementation plan by the fall semester.



*Ellen*



## *Proposal Help for Grant Writers*

*Found a really attractive RFP?  
Need that extra bit of help to develop your proposal?*

**Contact RSP to learn how to request assistance from Hanover Grants, a global information services group that provides comprehensive, customized services to Wright State University faculty and staff.**

**[Call ext. 2709 or email [ellen.friese@wright.edu](mailto:ellen.friese@wright.edu)]**



## RSP WORKSHOP SCHEDULE – SUMMER 2014

FOR MORE DETAILS, CONTACT DEBORAH LUNDIN AT EXT 2423 OR [DEBORAH.LUNDIN@WRIGHT.EDU](mailto:DEBORAH.LUNDIN@WRIGHT.EDU)

### RSP GATEWAY: USING THE PROPOSAL DEVELOPMENT MODULE FOR SYSTEM-TO-SYSTEM SUBMISSION AND/OR INTERNAL ROUTING

**DESCRIPTION:** This workshop will familiarize attendees with the RSP Gateway module used for both proposal development/submission through the Gateway and electronic routing. Presentation topics include types of information required to complete the proposal package; what steps must be taken to access the package; how to enter/upload proposal materials into the package; and how to approve the proposal during the routing process.

**DATES & LOCATIONS\*:**

- Wednesday, June 4; 1:30 – 3:00 p.m.
- Wednesday, July 2; 1:30 – 3:00 p.m.
- Wednesday, July 30; 1:30 – 3:00 p.m.
- Wednesday, August 6; 1:30 – 3:00 p.m.

\*All RSP Gateway workshops will take place in LX012

### FUNDING OPPORTUNITIES: HOW THE RSP GATEWAY'S SPIN MODULE CAN ENHANCE YOUR SEARCH

**DESCRIPTION:** In this hands-on workshop, attendees will learn to navigate the University's subscription database, SPIN, and learn various techniques for performing funding searches.

**DATES & LOCATIONS\*:**

- Wednesday, June 11; 9:30 – 10:30 a.m.
- Wednesday, July 16; 9:30 – 10:30 a.m.
- Wednesday, August 13; 9:30 – 10:30 a.m.

\*All SPIN workshops will take place in LX012

When making plans to attend the workshops, please RSVP to Jan Power at [rsp@wright.edu](mailto:rsp@wright.edu) or call ext. 2425. When responding, indicate the workshop topic and date. If you are unable to attend any of the scheduled workshops, but would like to learn more about either topic, please contact Dr. Deborah Lundin at [deborah.lundin@wright.edu](mailto:deborah.lundin@wright.edu) or call ext. 2423.

# What's All the Fuss about Pushing a Button? An Update



Electronic submission of grant proposals is the norm today and, as such, PreAward Administrators frequently hear the phrase, "I'll have it to you by 4:00 p.m." on deadline day. This late day scenario results in many proposals being submitted to the sponsor at 4:55 p.m. or later on the day the proposal is due. Once a proposal is received in RSP, the PreAward Administrator must submit the proposal through an electronic portal that is often overburdened on deadline days. By waiting until 4 p.m. or later to forward the complete proposal to RSP, a researcher runs the risk of not having time to make any changes found necessary upon review.

While it may seem, in the age of electronic submission *via* Grants.gov, eRA Commons, and Fastlane, that the guesswork of on-time submission is removed, a variety of pitfalls emerge the closer one is to the stated deadline. This rush of submissions can create a

potential sponsor back-log in processing, and checking for errors can take up to four hours. If the submission is found to have errors, and those errors cannot be corrected before the stated deadline, the application cannot be sent on for review.

*By waiting until 4 p.m. or later on the deadline day to forward the complete proposal to RSP, a researcher runs the risk of not having time to make any changes found necessary upon review.*

In addition to these last-minute scenarios, inclement weather can also impede a proposal submission, and in many cases, the sponsor is unmoved by this difficulty; proposals are still due on the deadline day despite the potential for University closure. For these

and many other reasons, RSP established a 5-day/2-day proposal review and submission timeline.

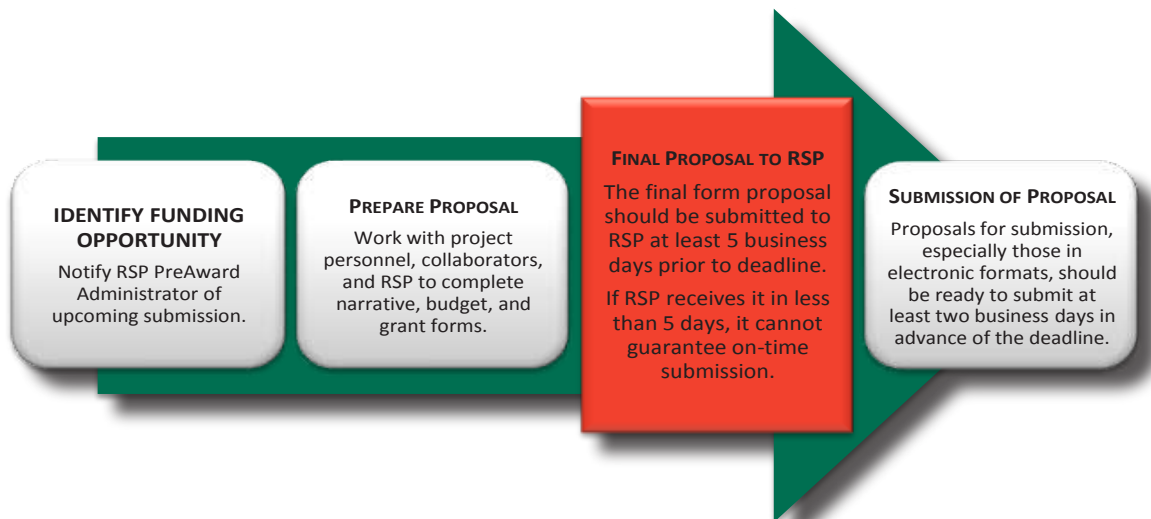
*Five (5) business days prior to submission deadline RSP must receive:*

- The final budget (both requested and cost share), budget justification, and abstract

*Two (2) business days prior to the submission deadline:*

- The complete proposal ready for submission is due at RSP

Scenarios like this can be avoided by submitting several hours and days in advance of the deadline. Research and Sponsored Programs strongly encourages you to contact them when you first make the decision to submit an application for funding (see below). We can provide the assistance you need for a successful submission, especially if we are aware of your proposal needs!



# Post Award NEWS

## Research & Development Expenditures Top \$50M for the First Time in Wright State History

Wright State University recently submitted its Higher Education Research and Development (HERD) survey for the fiscal year ending June 30, 2013. The HERD survey is the primary source of information on research and development expenditures at higher education institutions in the United States. The University participates in the HERD survey annually to determine Wright State's relative ranking among the over 600 colleges and universities that participate in the survey. The categories in the survey are externally funded re-

search, institutionally financed research, unrecovered Facilities and Administrative costs (F&A), and cost sharing. For fiscal year 2013, the total of all of these categories

2013 research and development expenditures will be released. Currently, Wright State ranks 205th out of 655 institutions nationally, and seventh out of 13 state universities in Ohio included in the survey (based on fiscal year 2012 research expenditures of \$46M). Because the HERD survey information is vital for decision making by federal, state, and academic planners regarding

Category of Research Expenditures	Amounts
U.S. Federal Government	\$26,888,000
State and Local Governments	\$6,535,000
Business	\$2,777,000
Nonprofit Organizations and All Other Externally Funded	\$851,000
Institutionally Financed – Unrestricted University Funds	\$7,917,000
Unrecovered Indirect Costs (F&A)	\$4,591,000
Cost Sharing	\$930,000
Total	\$50,489,000

came to \$50,489,000. The chart above provides a breakdown of the amounts reported for the fiscal year in question.

Late in Fall 2014, ranking information based on the University's

future R&D funding priorities, it is critical that Wright State comprehensively capture all research expenditures in Banner, especially all mandatory and voluntary cost share.

*Glen*

### SPINPLUS FUNDING OPPORTUNITY DATABASE

#### GAINING ACCESS IN A FEW EASY STEPS....

Wright State University has access to SPINPlus, the world's largest funding opportunities database, to assist in the funding opportunity search process. Explore how you can use this tool for your research needs.

#### GAINING ACCESS

1. Visit <https://rspgateway.wright.edu>.
2. Select "Login" in left side menu.
3. Complete Wright State University authentication using University-issued "w" number and network password.
4. Click on "Find Funding" at top of resulting page.

*NOTE: Remote users accessing SPINPlus from off site or from a non-Wright State University-registered IP address must VPN.*

For assistance navigating SPINPlus, contact your SPIN administrator, Deborah Lundin, Ed.D., at [deborah.lundin@wright.edu](mailto:deborah.lundin@wright.edu) or call ext. 2423.

#### BASIC SEARCH

SPINPlus provides a modern full-text search of entire records. You may search for any component of an opportunity, for example:

*Opportunity Title*

*Sponsor Name*

*SPINPlus Funding Opportunity Number*

*Field/Subject Matter*

*Eligible Applicant Types*

Results are returned in relevancy ranked format, and can be further sorted, grouped, or filtered by the results grid column headers.

## Research Compliance FAQs

### *Financial Conflict of Interest (FCOI)*

**Q.** *Who should be listed as an “investigator” on a project?*

**A.** Any project participant who is responsible for the design, conduct or reporting of the research is an “investigator” under the federal definition.

**Q.** *What are the differences in the compliance requirements for Public Health Service (PHS) versus non-PHS investigators and projects?*

**A.** There are three (3) additional conflict of interest compliance obligations for PHS investigators to fulfill:

- 1) PHS investigators are required to disclose sponsored travel in addition to external interests;
- 2) investigators may not submit PHS-sponsored research proposals until a current significant financial interest disclosure is on file with RSP; and
- 3) funding for these projects cannot be awarded until Conflict of Interest training (*via* the Collaborative Institutional Training Initiative [CITI] online at <https://www.citiprogram.org>) is completed.

However, all investigators are encouraged to take this training.

**Q.** *When does an investigator have to disclose external financial interests?*

**A.** Investigators are required to disclose significant financial interests in external entities minimally on an annual basis, and within 30 days of any change in those interests. This is completed electronically through the RSP Gateway (<http://www.wright.edu/rsp/>).

**Q.** *Who determines if an investigator has a Financial Conflict of Interest (FCOI)?*

**A.** Initial review of significant financial interests is handled administratively. If further information is required, the investigator will be notified. If it appears that a FCOI exists, the matter is referred

to the Wright State University Outside Interest Committee. If required, a Management Plan will be instituted.

### *Human Subjects*

**Q.** *Do I still need to submit a protocol if I believe that my project is exempt from Institutional Review Board (IRB) oversight?*

**A.** Only the IRB can determine the status of a human subjects research project.

The IRB currently has individual petitions tailored for each type of study. Complete the appropriate petition (<http://www.wright.edu/rsp/subjects.html>) and submit all required materials. If you have questions about your project, contact the IRB coordinator, Robyn Wilks, or Jodi Blacklidge, expedited review programs facilitator (see next page for contact information).

**Q.** *What human subjects research training is required?*

**A.** Human subjects training modules are available online through the Collaborative Institutional Training Initiative (CITI) program (<https://www.citiprogram.org/>). Modules are designed according to the type of research conducted (biomedical or social/behavioral/educational). When registering, please affiliate with Wright State University in order to access the proper modules. There is no charge for this training.

**Q.** *When is an IRB Institutional Authorization Agreement (IAA) required?*

**A.** An IAA is required when WSU is relying on another IRB for oversight or there is a current agreement in place with a local hospital (Kettering Health Network, Children’s Medical Center and Wright Patterson AFB). The WSU IRB requires a copy of the approved



*Julie Carstens,  
Director of Compliance*

*Continues pg. 7*

Continued from pg. 6

protocol, approved informed consent form and a copy of the non-WSU IRB's final approval letter for the study.

Contact Robyn Wilks for additional information.

**Q.** Does the Principal Investigator have to sign informed consent forms?

**A.** The IRB requires that the person conducting the discussion with the subject sign the consent form. This can be any study team member who is trained on the protocol, approved by the IRB, and delegated by the Principal Investigator to do so. These individuals must be named on the IRB petition and complete the human subjects protection training prior to enrolling subjects.

**Q.** Does the WSU IRB charge review fees?

**A.** Yes. Effective this year, WSU charges for review of sponsored/funded research if the sponsor allows for IRB fees. This includes all industry-sponsored clinical trials research. Some government and foundation-sponsored research will also provide a small fee for IRB review.

## RSP Compliance Area Contacts

### Director

Julie Carstens Ext. 3853  
[julie.carstens@wright.edu](mailto:julie.carstens@wright.edu)

### IRB Coordinator

Robyn Wilks Ext. 4462  
[robyn.wilks@wright.edu](mailto:robyn.wilks@wright.edu)

### Expedited Review Programs Facilitator

Jodi Blacklidge Ext. 3974  
[jodi.blacklidge@wright.edu](mailto:jodi.blacklidge@wright.edu)

**For additional research compliance guidance and information, please visit the RSP Policies & Procedures page:**

<http://www.wright.edu/rsp/policies.html>

Individual and group training sessions are available upon request.

## PROPOSAL BUDGET DEVELOPMENT: UPDATED RATES FOR FRINGE BENEFITS

As you develop a proposal budget, keep in mind that salary and fringe benefits rates will change over time, perhaps even annually. Such is the case with the University's fringe benefits for FY2015. *Effective July 1, 2014 to June 30, 2015*, fringe benefit rates for faculty, staff, and students will change to the following:

Full-time faculty (51% FTE or more)	27.0%
Faculty – part-time, overload, summer, retirees	17.8%
Full-time unclassified (including hourly)	31.9%
Part-time un/classified staff	15.0%
Full-time classified staff	53.9%
OPERS-covered students	16.5%

A proposal budget should reflect current rates, and when developing a multi-year budget, the fringe benefit rate should be increased by 1.5% over the previous years to cover potential/projected inflation. For help with budget development, communicate with your PreAward Administrator. For a comparison of rates from FY14, and projected rates for the next two years, visit the RSP web site page: <http://www.wright.edu/rsp/rates.html>.

# *Sponsor ALERTS*

---

## *NSF Updates Grant Proposal Guide (14-1) for Proposals Submitted On or After February 2014*

### **Chapter II.B, *Format of the Proposal:***

Upon entering the Proposal Preparation module in FastLane, the PI will be prompted to select whether or not the proposal is a collaborative proposal and the type of proposal being developed.

### **Chapter II.C.2, *Sections of the Proposal:***

This Grant Proposal Guide section includes a list of required sections for a full proposal submitted *via* FastLane. The section also clarifies that, if the submission instructions do not require a section to be provided, the proposer should insert text or upload a document in that section of the proposal that states, “Not Applicable.”

### **Chapter II.C.2.b, *Project Summary:***

A Project Summary containing special characters that is submitted as a PDF file in the Supplementary Documentation section must be formatted with separate headings for the Overview, statement on Intellectual Merit, and statement on Broader Impacts.

### **Chapter II.C.2.d(iii), *Results from Prior NSF Support:***

In the summary of results of the completed work, the accomplishments related to Intellectual Merit and Broader Impact activities must be separately described under two distinct headings.

In cases where the PI or co-PI has received more than one award (excluding amendments) they need only report on the one award most closely related to the proposal.

### **Chapter II.C.2.f(i), *Biographical Sketches:***

Inclusion of information beyond that specified may result in the proposal being returned without review.

The section on Products has been supplemented with language stating that, if only publications are included, the heading “Publications” may be used for this section of the Biographical Sketch.

If a biographical sketch(es) is not required, the proposer should insert text or upload a document in this section of the proposal that states, “Not Applicable.” In FastLane, if biographical sketches

for all senior personnel are uploaded in a single PDF file associated with the PI, the proposer should insert text or upload a document that states, “Not Applicable” for any co-PI or Senior Person.



### **Chapter II.C.2.h, *Current and Pending Support:***

If Current and Pending Support information is not required, the proposer should insert text or upload a document in this section of the proposal that states, “Not Applicable.” In FastLane, if Current and Pending Support information for all senior personnel are uploaded in a single PDF file associated with the PI, the proposer should insert text or upload a document that states, “Not Applicable” for any co-PI or Senior Person.

For details on all changes and complete instructions, visit:

[http://www.nsf.gov/pubs/policydocs/pappguide/nsf14001/nsf14\\_1.pdf](http://www.nsf.gov/pubs/policydocs/pappguide/nsf14001/nsf14_1.pdf).



## Recent Changes to the NIH Continuous Submission Policy

NIH has recently modified the continuous submission policy which allows chartered study section members, reviewers with recent substantial service, and NIH council members to submit at any time R01, R21, and R34 applications that would otherwise have standard due dates.

Instead of consulting a table with different submission due dates, there are now clear submit-by dates to be considered for specific council rounds. See chart below.

could be less than 120 days or up to 240 days (this is rare).

Why did NIH make the change?

Most importantly, the change is meant to improve the quality of reviews. The earlier 120-day requirement forced the internal review groups to create small special emphasis panels. Now, the internal review groups will be able to create larger and more scientifically focused panels. These panel members will have greater expertise and provide more robust reviews.

Application Receipt Period		
Assigned Council Round	Non-AIDS applications	AIDS applications
May	August 17 - December 16	October 8 - February 7
October	December 17 - April 16	February 8 - June 7
January	April 17 - August 16	June 8 - October 7

What does this mean for reviewers?

Reviewers still have an extra one to two months for preparing their own applications, which represents approximately the same amount of time they spend reviewing applications for NIH.

Reviewer applicants may have to wait longer to get their summary statements. The time from application receipt to review

The change in policy will also bring to an end to the confusion over how late a reviewer can submit an application for a particular council round.

Please see NIH NOT-OD-14-028 (<http://grants.nih.gov/grants/guide/notice-files/NOT-OD-14-028.html>) for more information. This notice also provides several examples of grant submissions that do not qualify for the continuous submission policy.

## NIH and AHRQ Change in Resubmission Policy

The National Institutes of Health (NIH) and the Agency for Healthcare Research and Quality (AHRQ) have announced an important change in policy on application submissions. For applications due after April 16, 2014, following an unsuccessful resubmission (A1) application, applicants may now submit the same idea as a new (A0) application for the next appropriate due date.

The new policy still allows a single resubmission per application, but ideas that were unsuccessfully resubmitted (A1) may now be presented again in a new (A0) grant application without requiring a substantial redesign of the content and scope of the project.

The resubmission of an idea as new means the application will be considered without being associated to the previous submission; the applicant will not need to provide an introduction explaining application changes nor respond to previous reviewer comments. NIH reviewers will be instructed to review it as new even if they have seen it in prior grant cycles.

What does this mean? You will no longer need to redirect your research focus in order to submit further applications after an unsuccessful (A1) resubmission. NIH expects that applicants will continue to take advantage of previous reviewer's comments to strengthen their application for each grant submission.

For more details check out NIH notice number *NOT-OD-14-074*.

# The RSP Gateway: Routing Questions & Answers



*The paper-based red routing folders were a visual prompt to review a proposal. In the new system, how will I know a proposal is awaiting my review?*

Communication is key! As the route arrives to a reviewer, a notifying email is sent to the related wright.edu address. Don't forget to check the junk folder, though; there have been instances where the notification is filtered to junk. If this happens, drag the message to the main inbox and proceed accordingly. Additionally, PIs and other senior personnel should discuss the project with the appropriate department chair(s) and dean(s), advising them that a proposal will soon come for review, allowing everyone involved to resolve potential obstacles during the route process; (i.e., an approver who is on travel status). Finally, approvers are encouraged to identify signature authority delegates, so they may serve as backups during times of extended leave from the University (Note: the RSP Gateway, as a web-based system, is accessible anywhere external to campus).

*I am trying to access a proposal for review and the Reviewer Dashboard link within the notification email doesn't work. What am I doing wrong?*

This problem is typically linked to the location of the reviewer and device being used for the review process. If the reviewer is using a computer located off-campus, s/he must complete the Virtual Private Network (VPN) process prior to accessing the email link. A reviewer will also have to VPN if s/he is on campus, but using a wireless device (laptop, iPad, smartphone). If, however, the reviewer is working from an on-campus, networked computer and continues to encounter access issues, please contact the proposal's RSP PreAward Administrator (<http://www.wright.edu/rsp/pubs/RN/rsp-staff.html>). For VPN guidance and questions contact CaTS or visit the CaTS website: <http://www.wright.edu/cats/vpn/>.

*I reviewed the proposal documents (and moved the radio buttons from Unreviewed to Reviewed) but the My Decision drop-down menu is not accessible. What step am I missing?*

Save! When the reviewer completes a review of all document attachments, red text directing the reviewer to save this action appears in the upper right-hand quadrant of the Reviewer Dashboard, next to a disk icon (see image below). Once the reviewer clicks on the disk icon, the My Decision drop-down menu becomes active.

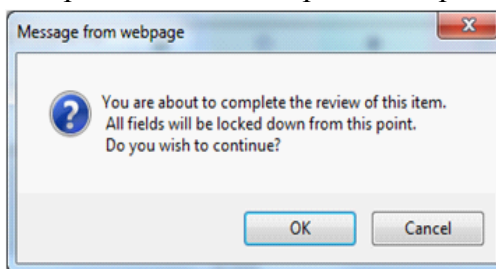


Save your data or it will not be recorded...

*I know I reviewed the proposal but I still receive email reminders to review the proposal. Why?*

If a reviewer has not completed all the steps in the review process, the route will remain with that reviewer. Behind the scenes in RSP, the proposal's PreAward Administrator will send a reminder to the reviewer after a few days of inaction. The most missed step in the route process is the second "save" requirement. Once the reviewer has reviewed the documents and saved this action, and has selected his/her My Decision (and, for investigators, accepted the compliance language), the red text and disc icon appears again (see image above).

Once the action is saved, a popup window (see image below) will appear, prompting the reviewer to confirm the completion of the route process. Upon confirmation, the



review is forwarded to the next approver in the route queue.

RSP continues to hold open

training sessions on using the RSP Gateway for proposal development, submission, and routing procedures. See the Summer 2014 workshop schedule on page 3 for available dates and times. For more information on the RSP Gateway, please contact your designated PreAward Administrator.

# FBI Request Emphasizes Prudent Chemical Management Practices

Recently the FBI contacted Wright State to verify the use and possession of a chemical of interest (COI). This incident follows on the heels of a recently distributed FBI Intelligence Bulletin in which the FBI states with high confidence university laboratories are vulnerable to criminals and extremists wanting to steal COIs. The Bulletin includes several case studies of chemical thefts.

COIs are chemicals that pose security issues including their release to cause adverse effects to humans or the environment, theft or diversion to use as weapons, or sabotage/contamination. Special precautions are necessary to secure and to use these substances safely.

This recent case underscores the importance of prudent chemical management practices that include chemical procurement, storage, security, use, and disposal.

Please take the time to:

- Review materials storage, use, and disposal requirements before ordering.
- Select a safer alternative, if available.
- Maintain a current inventory and submit inventory to EHS.
- Ensure all chemicals are properly labeled, stored, and secured.
- Develop and train to written standard operating procedures or protocols.
- Be prepared for emergencies, including spills.
- Dispose of chemicals properly and timely.
- Report suspicious activity.

For more information or for a copy of the FBI Bulletin, contact Environmental Health and Safety at 937-775-2215 or [ehs@wright.edu](mailto:ehs@wright.edu).



## STAFF INFORMATION

**Office of the Vice President for Research**  
Phone 775-3336; FAX 775-2357  
202 University Hall  
<http://wright.edu/rsp>

Robert E. W. Fyffe, Ph.D.  
Vice President for Research and  
Dean of the Graduate School  
[robert.fyffe@wright.edu](mailto:robert.fyffe@wright.edu)

Kathleen Friedman  
Assistant to the Vice President for Research  
[kathleen.friedman@wright.edu](mailto:kathleen.friedman@wright.edu)

Wetona Walchner, Business Manager  
[wetona.walchner@wright.edu](mailto:wetona.walchner@wright.edu)

### Office of Technology Transfer

Elana Wang, J.D., Director  
[elana.wang@wright.edu](mailto:elana.wang@wright.edu)  
Meghan Sheehan, J.D., Licensing Associate  
[meghan.sheehan@wright.edu](mailto:meghan.sheehan@wright.edu)

**Office of Research and  
Sponsored Programs**  
Phone 775-2425; FAX 775-3781  
[rsp@wright.edu](mailto:rsp@wright.edu)  
201J University Hall  
[www.wright.edu/rsp](http://www.wright.edu/rsp)

Ellen Reinsch Friese  
Associate Vice President for Research  
[ellen.friese@wright.edu](mailto:ellen.friese@wright.edu)

### Pre Award Services

Jackie A. Frederick, Director  
[jackie.frederick@wright.edu](mailto:jackie.frederick@wright.edu)  
Deborah Lundin, Associate Director  
[deborah.lundin@wright.edu](mailto:deborah.lundin@wright.edu)  
Marianne Shreck, Assistant Director  
[marianne.shreck@wright.edu](mailto:marianne.shreck@wright.edu)  
Sheila Bensman, Assistant Director  
[sheila.bensman@wright.edu](mailto:sheila.bensman@wright.edu)

### Post Award Services

Glen Jones, Director  
[glen.jones@wright.edu](mailto:glen.jones@wright.edu)  
Yun Wu, Associate Director  
[yun.wu@wright.edu](mailto:yun.wu@wright.edu)  
Danielle Booth, Assistant Director  
[danielle.booth@wright.edu](mailto:danielle.booth@wright.edu)

Gene Florkey, Grants Accountant  
[gene.florkey@wright.edu](mailto:gene.florkey@wright.edu)  
Elaine Davis, Grants Accountant  
[elaine.davis@wright.edu](mailto:elaine.davis@wright.edu)  
Kim Owens, Grants Accountant  
[kim.owens@wright.edu](mailto:kim.owens@wright.edu)

### Compliance

Julie M. Carstens, Director  
[julie.carstens@wright.edu](mailto:julie.carstens@wright.edu)  
Robyn Wilks, CIM  
Administrative Coordinator (IRB)  
[robyn.wilks@wright.edu](mailto:robyn.wilks@wright.edu)

### Programs Facilitators

Jodi Blacklidge  
[jodi.blacklidge@wright.edu](mailto:jodi.blacklidge@wright.edu)  
Mandy Karper  
[amanda.karper@wright.edu](mailto:amanda.karper@wright.edu)  
Cheryl Nickoson  
[cheryl.nickoson@wright.edu](mailto:cheryl.nickoson@wright.edu)  
Jan Power  
[rsp@wright.edu](mailto:rsp@wright.edu)

### Undergraduate Assistants

Jodi Grillott  
Ifeoluwa Jokote

# AWARDS

*The grants and contracts on these pages were awarded from  
November 2013 through March 2014*

## **Boonshoft School of Medicine**

- Bale, John  
*Miscellaneous Awards Under DCOP  
Fiscal Agency Agreement  
Dayton Clinical Oncology Program*  
\$11,485
- Boivin, Gregory  
*Biopsy Study  
Devicor Medical Products, Inc.*  
\$24,166
- Broderick, Jr., George T.  
Wysong, Mark  
*AVOID-HF: Aquapheresis  
Versus Intravenous Diuretics and  
Hospitalization for Heart Failure*  
Gambro UF Solutions, Inc.  
\$153,000
- Carlson, Robert G.  
Daniulaityte, Raminta  
*Montgomery County Poisoning Death  
Review, 2014*  
Public Health Dayton and Montgomery  
County  
\$21,730
- Cauley, Katherine L.  
*AHEC Support  
Ohio Board of Regents*  
\$251,552
- Cauley, Katherine L.  
Simmons, Dionne M.  
*Kinship Navigator Consortium CY2014*  
Montgomery County Department of Job  
and Family Services  
\$128,900
- Chen, Ji  
Chen, Yanfang  
*Role of Ang II/Ang (1-7) Balance in  
Intracerebral Hemorrhagic Stroke*  
American Heart Association - Great  
Rivers Affiliate  
\$47,000
- Cope, Timothy C.  
Rich, Mark M.  
Fyffe, Robert E.W.  
*Synaptic Function: Effects of the Nerve  
Injury, Repair, and Altered Activity*  
Department of Health and Human  
Services, National Institute of  
Neurological Disorders and Stroke  
\$827,896
- Duren, Dana L.  
*Versartis Skeletal Maturity Contract*  
Versartis, Inc.  
\$75,900
- Eberhart, Gregory M.  
*Assessing Partnership Between  
Pediatricians and Parents in Children's  
Health Center Sub-Specialty Clinics and  
SOAR-Net Community Practices*  
Dayton Children's Hospital Foundation  
\$37,370
- Elased, Khalid M.  
*Translational Biomedical Training for  
Underrepresented Minorities*  
U.S. Department of Education  
\$53,048
- Fernandes, Ashley  
*Do Family Centered Rounds Lead to  
More Humanistic Pediatric Care?  
A Systematic Review of the Literature*  
Arnold P. Gold Foundation  
\$5,000
- Gentile, Julie P.  
*CCOE: Dual Diagnosis MI/DD*  
Ohio Developmental Disabilities Council  
\$75,000
- Gomez-Cambronero, Julian  
*PLD2, as a GEF or as a Lipase, is  
Central to Leukocyte Chemotaxis*  
Department of Health and Human  
Services, National Heart, Lung, and  
Blood Institute  
\$355,803
- Klykylo, William M.  
*Data Safety Monitoring Board Member  
Consulting Agreement*  
Ohio State University  
\$667
- Krishnamani, Rajan  
Wysong, Mark  
*Phase III, Multicenter, Randomized,  
Double-Blind, Placebo-Controlled Trial  
to Evaluate the Efficacy and Safety  
of Ularitide (Urodilatin) Intravenous  
Infusion in Patients Suffering from Acute  
Decompensated Heart Failure  
(TRUE-AHF)*  
Cardioentis, Ltd  
\$255,904
- McEachen, James C.  
*Optimizing Oxygen Delivery Schedule for  
Enhanced Pilot Performance*  
Wyle Laboratories  
\$53,173
- Organisciak, Daniel T.  
*Antioxidants and Retinal Gene  
Expression Profiles*  
Ohio Lions Eye Research Foundation  
\$10,000
- Parmelee, Dean X.  
*Service Contract between Qassim  
University and Wright State University*  
Qassim University, Unaizah College of  
Medicine  
\$1,250,000
- Pascoe, John M.  
Neeley, Sabrina M.  
Roman, Brenda  
*The Wright Rural Health Initiative:  
A Community-Based Program*  
HealthPath Foundation of Ohio  
\$73,663

Prayson, Michael J.  
Laughlin, Richard T.  
Rubino, Louis J.  
Herbenick, Michael  
*Fluid Lavage of Open Wounds (FLOW):  
A Multi-Center, Blinded, Factorial  
Trial Comparing Alternative Irrigating  
Solutions and Pressures in Patients with  
Open Fractures*  
Greenville Hospital System  
\$800

Rapp, Richard C.  
*Comparing Interventions for Opioid  
Dependent Patients presenting in  
Medical ED's*  
University of New Mexico  
\$41,592

Reo, Nicholas V.  
*Aerospace Physiology and Toxicology  
Research*  
Henry M. Jackson Foundation  
\$14,921

Rich, Mark M.  
*Muscle and Neuromuscular Junctions in  
Spinal Muscular Atrophy*  
Johns Hopkins University  
\$40,975

Wilson, Josephine F.  
*Ohio SBIRT*  
Ohio Department of Mental Health and  
Addiction Services  
\$83,000

Wilson, Josephine F.  
*MEDTAPP Pediatric Telepsychiatry Pilot  
Study*  
Ohio State University  
\$41,162

Wyatt, Christopher N.  
*AMP-Activated Protein Kinase and  
Oxygen Sensing*  
Department of Health and Human  
Services, National Heart, Lung, and  
Blood Institute  
\$321,930

Yaklic, Jerome Lumetta  
Wysong, Mark  
*A Randomized, Double-Blind,  
Placebo-Controlled Study to Evaluate  
the Safety and Efficacy of Elagolix  
in Subjects with Moderate to Severe  
Endometriosis-Associated Pain*  
AbbVie Inc.  
\$319,905

Zink, Therese M.  
*Transition of Primary Care Medical  
Group Practices to the Next Generation*  
Medica Research Institute  
\$16,693

## **College of Education and Human Services**

Franco, Suzanne  
Lindsey, Jill L.  
*Ohio Education Research Center*  
Ohio State University  
\$51,120

Franco, Suzanne  
*OERC Faculty Researcher*  
Ohio State University  
\$15,030

Lindsey, Jill L.  
*Evaluation of Implementation Fidelity  
and Impact in Ohio Network of Education  
Transformation (ONET) Schools*  
Ohio State University  
\$68,408

Lindsey, Jill L.  
Franco, Suzanne  
*Investigation of the Initial Use of Student  
Learning Objectives in Ohio*  
Ohio State University  
\$45,000

Lindsey, Jill L.  
*Oversight of Research for the Ohio  
Education Research Center*  
Ohio State University  
\$36,508

Lyon, Anna  
*Reading Recovery: Scaling Up  
What Works*  
Ohio State University  
\$7,800

Lyon, Anna  
*Reading Recovery: Scaling Up  
What Works*  
Ohio State University  
\$1,500

Patel, Nimisha  
*The Effect of Student Engagement  
on Student Achievement in STEM:  
Implications for Public Policy for High  
School STEM Education*  
Ohio State University  
\$22,814

## **College of Engineering and Computer Science**

Bourbakis, Nikolaos G.  
*A Methodology for the Deterministic  
Detection of Program Flow Hijacking  
(PFH)*  
Department of Defense, Office of Naval  
Research  
\$70,000

Gallagher, John C.  
Shingledecker, Clark  
*RDE-RAD: Collaborative Research:  
Ohio's STEM Ability Alliance (OSAA)*  
National Science Foundation  
\$313,637

Gallimore, Jennie J.  
*Quick Reaction Assessments, Studies,  
Analysis, Evaluation and Research  
(QUASAR)*  
Wyle Laboratories  
\$120,844

Ganapathy, Subhashini  
*Image Recognition Using Mobile  
Devices for Informed Decision Making*  
Emerson Process Management  
\$25,000

Goshtasby, A. Ardeshir  
*Fusion of Multimodal Video Streams*  
Department of Defense, Air Force, Air  
Force Research Laboratory  
\$60,332

Grandhi, Ramana V.  
*Collaborative Center in Multidisciplinary  
Sciences (CCMS)*  
Virginia Polytechnic Institute and  
State University  
\$10,000

Huang, George Young, Henry Daniel Thomas, Scott Keith <i>Numerical/Experimental Study of Functionally Graded Structures and Exploration of Micro Air Vehicles</i> Department of Defense, Air Force, Air Force Research Laboratory \$25,000	Reynolds, David B. <i>Assessment of a Carotid Arterial Cooling Collar (CACC) on Physical Performance and Recovery</i> Wyle Laboratories \$25,811	Rizki, Mateen M. <i>Metabolite Differentiation and Discovery Lab Development</i> Oak Ridge Institute for Science and Education \$3,250
Huang, George <i>Low Pressure Turbine Aerodynamic Research</i> Department of Defense, Air Force, Air Force Research Laboratory \$7,607	Rigling, Brian D. Garber, Fred D. <i>AFRL Research Collaboration Program</i> Department of Defense, Air Force, Air Force Research Laboratory \$369,577	Roberts, Rory A. <i>Design and Fabrication of Power Takeoff for Micro-Jet Engines</i> Universal Technology Corporation \$9,333
Kidambi, Phani <i>Research and Development of Citation Mapping Feature Vector</i> Vedainfo Inc. \$16,827	Rigling, Brian D. <i>Collaborative Center for Surveillance Research</i> More Than One Source of Support \$132,000	Saville, Michael <i>Transformation Optics for Metamaterial-Based Antenna Design</i> S4, Inc. \$30,000
Kidambi, Phani <i>Dayton Means Internships, Co-ops, and Jobs - Thruti Information Labs, Ltd. Graduate Assistantship</i> Thruti Information Labs Limited \$3,672	Rigling, Brian D. Garber, Fred D. <i>Center for Automatic Target Recognition: Research Infrastructure</i> Department of Defense, Air Force, Air Force Research Laboratory \$75,000	Saville, Michael <i>Feasibility Study on Radar Exploitation (REX) Using Compact Feature Techniques</i> Etegent Technologies, Ltd. \$20,000
Klingbeil, Nathan W. <i>Rapid Qualification Methods for Powder Bed Direct Metal AM Processes</i> Case Western Reserve University \$105,846	Rigling, Brian D. Garber, Fred D. <i>Center for Automatic Target Recognition: Summer Intern Program</i> Department of Defense, Air Force, Air Force Research Laboratory \$58,000	Sheth, Amit <i>Student Travel for SoCS 2013 Meeting</i> Information School \$1,471
Klingbeil, Nathan W. <i>Thermal Imaging for Process Monitoring and Control of Additive Manufacturing</i> Pennsylvania State University \$102,196	Rigling, Brian D. <i>Collaborative Center for Surveillance Research</i> National Science Foundation \$55,000	Sheth, Amit <i>ICWSM Travel Grant</i> Association for the Advancement of Artificial Intelligence \$750
Klingbeil, Nathan W. Gooden, Martin P <i>Ohio LSAMP Alliance</i> Ohio State University \$91,214	Rigling, Brian D. <i>Object Physics for Exploitation and Recognition Advancements (OPERA)</i> Leidos, Inc. \$45,000	Shingledecker, Clark Flach, John M. <i>STEM Degrees and Careers for Ohioans with Disabilities, Including Veterans: COF Scholarships in Support of the NSF-Funded Regional Alliance in Disability</i> Ohio Board of Regents \$647,200
Mawasha, P. Ruby <i>OSGC Travel Allocation Funds 2013-2014</i> Ohio Space Grant Consortium \$3,000	Rigling, Brian D. <i>Collaborative Center for Surveillance Research</i> Department of Defense, Air Force, Air Force Research Laboratory \$44,000	Slater, Joseph C. <i>Dayton Means Internships, Co-ops, and Jobs - D'Angelo Technologies, LLC Graduate Assistantship</i> D'Angelo Technologies, LLC \$3,525

Slater, Joseph C.  
*Structural Dynamics and Mechanics of Gas Turbine Engine Components*  
Universal Technology Corporation  
\$3,146

Srinivasan, Raghavan  
*High Temperature Deformation Behavior of Titanium Alloys*  
RTI International Metals, Inc.  
\$30,000

Thomas, Scott Keith  
Proeschel, Andrew Kegan  
*NASA Lunar Mining Robot*  
Ohio Space Grant Consortium  
\$5,000

Wang, Shaojun  
*RI: Small: Developing Large Scale Distributed Syntactic, Semantic and Lexical Language Models for Machine Translation and Speech Recognition*  
National Science Foundation  
\$304,173

Wischgoll, Thomas  
*Extending the Visual Analytics Framework for High Throughput Screening of Biological Infectious Agents*  
High Performance Technologies, Inc.  
\$44,866

Wu, Zhiqiang  
*Broadband High-Speed RF Spectrum Processor via Intelligent Adaptive Compressive Sensing*  
Kalos Technologies, Inc.  
\$45,056

Xue, Kefu  
Petkie, Douglas T.  
*Summer and Year at the Edge*  
Department of Defense, Air Force, Air Force Research Laboratory  
\$592,000

Zhuang, Yan  
*Multifunctional Oxide Heterostructures*  
Universal Energy Systems, Inc.  
\$60,443

### **College of Liberal Arts**

Dockery, Jane L.  
*Dayton Metro Library Survey*  
Dayton Metro Library  
\$8,798

Dockery, Jane L.  
Gresham, Madeline Diane  
*Downtown Dayton Partnership Survey*  
Downtown Dayton Partnership  
\$8,372

Dockery, Jane L.  
Hooker, Carol M.  
*Community Health Needs Assessment for Madison County Hospital*  
Madison County Hospital  
\$4,117

Dockery, Jane L.  
*Assessing the Greene County Community's Readiness for Change*  
Greene County Educational Service Center  
\$3,755

Dockery, Jane L.  
*Worthington Council Retreat*  
City of Worthington, Ohio  
\$2,875

Dustin, Jack L.  
*Public and Social Service Transportation Curriculum and Internship Program*  
Ohio Department of Transportation  
\$5,000

Gresham, Madeline Diane  
*Fairborn Community Survey*  
City of Fairborn, Ohio  
\$7,820

Hooker, Carol M.  
*HelpLine Delaware & Morrow County Household Survey*  
HelpLine of Delaware and Morrow Counties  
\$10,201

Hooker, Carol M.  
*2013 Dayton Business Analysis*  
City of Dayton, Ohio  
\$10,000

### **College of Nursing and Health**

Mainous, Rosalie O'Dell  
*Miami Valley Hospital Operating Agreement*  
Miami Valley Hospital  
\$45,000

Ulrich, Deborah Lee  
*Intervention to Mitigate Bullying and Its Consequences Against Nursing Students*  
University of Cincinnati  
\$4,440

### **College of Science and Mathematics**

Arlian, Larry G.  
Morgan, Marjorie S.  
*Scabies: Biology, Culture, Host Specificity, and Antigens*  
Department of Health and Human Services, National Institute of Allergy and Infectious Diseases  
\$328,500

Arlian, Larry G.  
*Laundry Sample Analysis*  
Procter & Gamble Company  
\$22,750

Bowling, Nathan A.  
*Cyber Attack and Mission Impact Research - Suspicion in Information Technology*  
Systems Research and Applications International  
\$70,000

Brown, Elliott  
*1550-nm Extrinsic-GaAs Photomixers, Arrays and Spectrometers*  
Army Research Office  
\$155,398

Brown, Elliott  
*High-Resolution Sensing of DNA Nanostructures in the THz Region*  
University of California  
\$28,401

Brown, Elliott  
*Pump Probe Characterization of Wide-Bandgap Photoconductors*  
Lawrence Livermore National Laboratory  
\$20,000

Farlow, Gary C.  
*Dynamitron Use and Maintenance in Support of Collaborative Material Science Research*  
Air Force Institute of Technology  
\$1,702

Farrell, Ann M. Tosa, Sachiko <i>Lesson Study for Collaborative, Practice-Based Professional Development</i> Ohio Department of Education \$262,027	Kenyon, Lisa Orvik <i>Supporting Scientific Practices in Elementary and Middle School Classroom</i> Northwestern University \$67,592	Ritzi, Jr., Robert W. <i>Ground Water Protection Program 2014</i> Cemex \$20,000
Feld, William A. <i>Single Ion Conducting Solid-State Lithium Electrochemical Technologies</i> University of Dayton \$25,000	Look, David C. <i>GaN Crystal Characterization</i> Kyma Technologies, Inc. \$200,000	Rooney, Thomas <i>Road and Trail Inventory and Mapping for Dairymen's</i> Dairymen's, Inc. \$12,700
Fox, Jane Lee <i>Modeling of the Martian Thermosphere/Ionosphere in Support of Volatile Evolution Calculations: Altitude Distribution of Isotopomers and Ancient Atmospheres</i> National Aeronautics and Space Administration \$110,000	Look, David C. <i>Experimental and Theoretical Pursuit of the Ultimate Conductivity in ZnO</i> U.S. Department of Energy \$121,000	Rouhana, Labib <i>Identification of CPEB1 Target mRNAs and Genes Operating in Planarian Egg and Yolk Gland Development</i> Ford Foundation \$1,500
Hammerschmidt, Chad R. <i>Mercury Analysis of Environmental Samples</i> More Than One Source of Support \$9,270	Look, David C. <i>Native Point Defects, Electrically-Active Impurities, and Plasmonics ZnO Interfaces</i> Ohio State University \$60,000	Schneider, Tamera <i>Research and Analytical Support for the 711th HPW Human Effectiveness Directorate</i> Department of Defense, Air Force, Air Force Research Laboratory \$50,000
Hartzler, Lynn <i>EAGER: Identification of Chemosensitive Regions in Brainstems of Herps</i> National Science Foundation \$57,933	Lunsford, Suzanne K. Slattery, William <i>Partners in Integrated Earth Systems Science (PIES)</i> Ohio Board of Regents \$79,124	Schneider, Tamera <i>Education and Awareness Campaign about Climate Change</i> City of Dayton, Ohio \$6,724
Hennessy, Michael B. <i>Rhesus Model for Proinflammatory Influences on Depression</i> Department of Health and Human Services, National Institute of Mental Health \$235,225	Medvedev, Ivan <i>Affordable Breath Analyses for Monitoring of Diabetes</i> University of Texas \$92,019	Slattery, William Lunsford, Suzanne K. <i>Science Teaching for Ohio's New Economy (STONE)</i> Ohio Board of Regents \$62,900
Higgins, Steven R. <i>Development and Application of a Hydrothermal Atomic Force Microscope</i> Oak Ridge National Laboratory \$21,593	Narakesari, Shruti <i>Human-Machine Trust for Robust Autonomous ISR Systems</i> Systems Research and Applications International \$19,277	Stireman, John O. <i>Collaborative Research: The Phylogeny and Evolution of World Tachinidae (DIPTERA)</i> National Science Foundation \$7,300
Juvina, Ion <i>A Neuroimaging Augmented Meta-Cognition Model to Predict the Decision-Making Capabilities of Warfighters (NEUMET-CO)</i> UtopiaCompression Corporation \$69,912	Peters, Jeffrey L. <i>Genetic Monitoring of Arctic Migratory Waterfowl in Beringia (Russian Far East and Alaska)</i> U.S. Civilian Research and Development Foundation \$15,000	Tarpey, Thaddeus <i>Characterizing Placebo Response to Active Treatment Using Very High Dimensional Data</i> New York University School of Medicine \$84,914
	Reed, Michelle K. <i>Project knoTiT 3.0: Mobilizing National Educator Talent</i> Ohio State University \$33,696	Watamaniuk, Scott N. J. <i>Proactive and Retroactive Interference in Intuitive Spatial Learning</i> Wright State Applied Research Corporation \$70,665



## **Lake Campus**

Homan, Greg  
*Support for Wright State University's  
Lake Campus Agricultural Program*  
Ohio Board of Regents  
\$200,000

## **Raj Sooin College of Business**

Gregorich, Earl  
*Small Business Development Center*  
Ohio Development Services Agency  
\$108,915

Gregorich, Earl  
*Entrepreneurship Project Pilot Program*  
Ohio Development Services Agency  
\$15,000

Munch, James M.  
*Speedway Emerging Leaders' Executive  
Educational Program*  
Speedway LLC  
\$61,500

## **School of Professional Psychology**

Schultz, Michelle S.  
*SOPP Practicum: Central Clinic  
FY2014*  
Central Clinic  
\$12,000

## **Student Affairs**

Keucher, Gina R.  
Vlasnik, Amber L.  
*The Confidence Project: Wright State  
Speaks*  
Kappa Delta Foundation  
\$5,000

## **Universitywide**

Narayanan, Sundaram  
*Interactions with Semi-Autonomous  
Remotely Piloted Vehicles*  
Department of Defense, Air Force, Air  
Force Research Laboratory  
\$1,137,000

Narayanan, Sundaram  
*Neuroscience and Medical Imaging*  
Department of Defense, Air Force, Air  
Force Research Laboratory  
\$500,000

Sethi, Vikram  
*Support for Wright State University's  
Institute for Defense Studies and  
Education*  
Ohio Board of Regents  
\$150,000

## **Vice President for Research and Dean of the Graduate School**

Grimes, Keith David  
*Aerospace Technology Evaluation and  
Assessment (ATEA) TO 0014*  
InfoSciTex  
\$287,500

Grimes, Keith David  
*FY13 Ghostbuster RDT&E (AC13-029)*  
Ball Aerospace  
\$61,710

Grimes, Keith David  
*FY14 GEOINT Maintenance, Support  
and Enhancement*  
Ball Aerospace  
\$39,359

Grimes, Keith David  
*SAR, Thermal, Spectral (STS)  
Maintenance, Sustainment, and  
Enhancement (MS&E) Support  
(ATEP TO 118)*  
Ball Aerospace  
\$9,472

Gross, David C.  
*InfoSciTex: Task Order 0013*  
InfoSciTex  
\$136,036

Gross, David C.  
*Aerospace Technology Evaluation and  
Assessment (ATEA) Task Order 0012*  
InfoSciTex  
\$16,992

Parker, Jason G.  
*Business and Technical Support Services*  
Wright State Applied Research  
Corporation  
\$1,621,236

Rapoch, Terence G.  
*Quantitative Metrics Analysis*  
Wright State Applied Research  
Corporation  
\$40,000

Smith, Jack E.  
*Ohio Mortuary Operations Response  
Team Training*  
Ohio Department of Health  
\$38,632

Smith, Jack E.  
*STORM Course Training*  
PA Region 13 Task Force  
\$18,000

Smith, Jack E.  
*Toxic Medic Training*  
Ohio Emergency Management Agency  
\$14,825

Wysong, Mark  
*SSA Health IT Records*  
Social Security Administration  
\$1,275

*We congratulate those receiving external funds and  
encourage those with unfunded proposals to  
consult with us about resubmission.*