



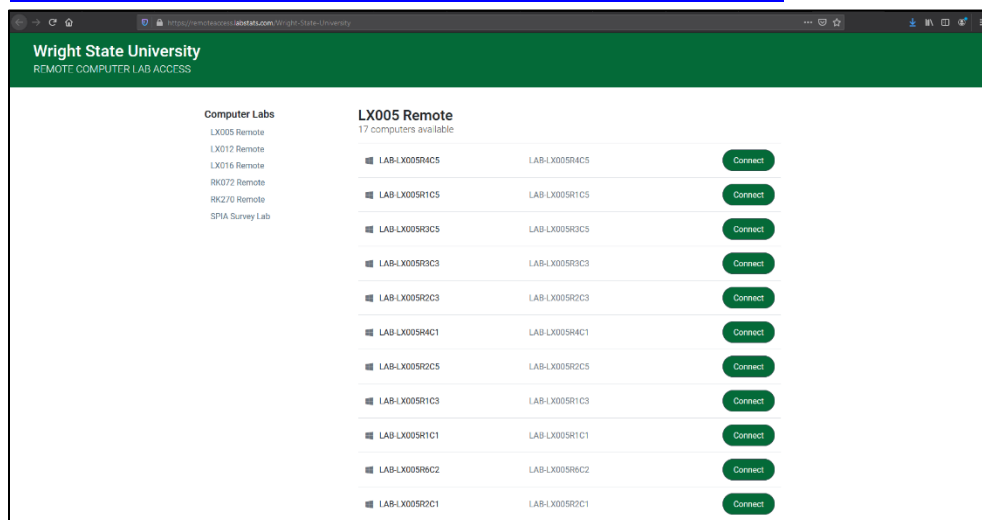
## Remote Lab Access

CaTS now provides the ability for to access campus computers with the **LabStats Remote Access Tool**.

You will need to be connected to the WSU VPN in order to access these devices. This can be found at: <https://www.wright.edu/information-technology/security/use-vpn-software-on-your-pc-or-macintosh>

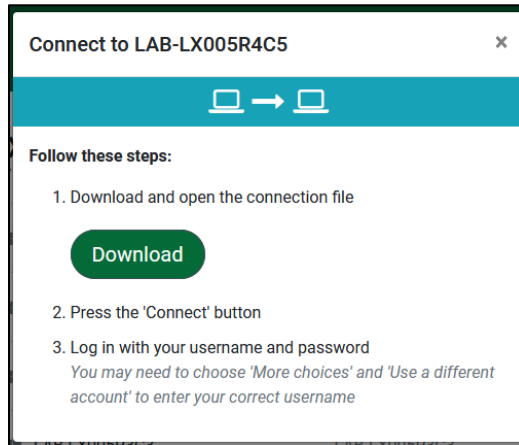
On a Windows Computer:

1. Go here: <https://remoteaccess.labstats.com/Wright-State-University>

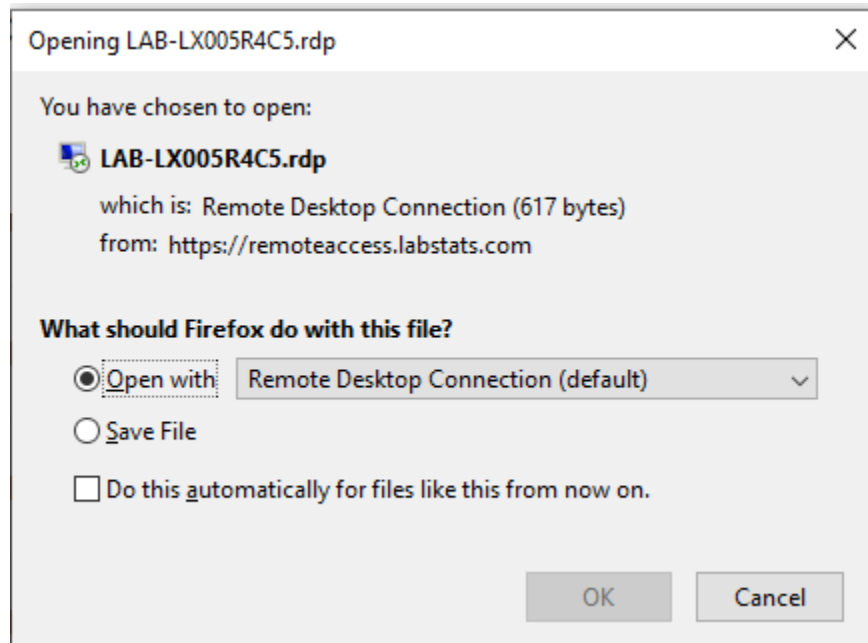


2. From the list, choose the computer you would like to connect to. If none are listed, there are no computers currently available.

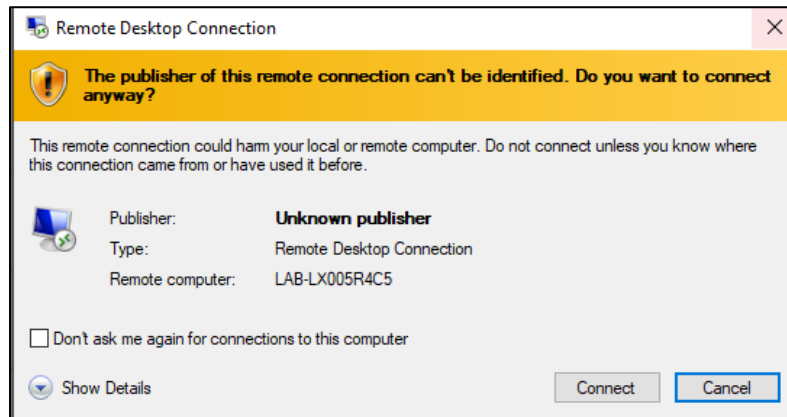
- Once you have selected a computer you will see the below screen. Select Download and run the downloaded file once it completely downloads.



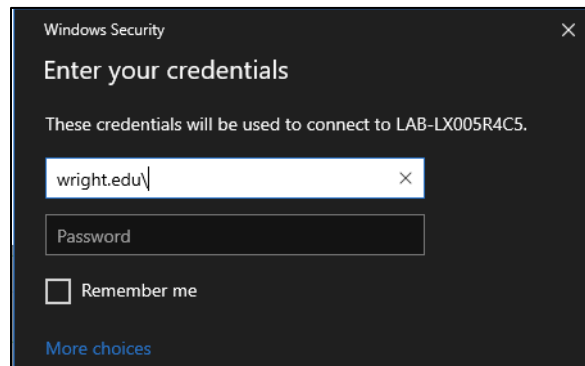
- You will see this screen pop up. Click OK once you have selected the window.



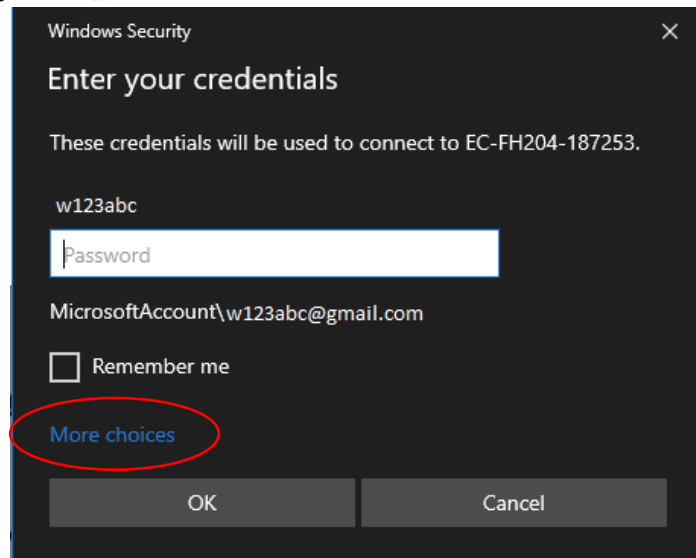
- You may get the following warning. If you do, select Connect.



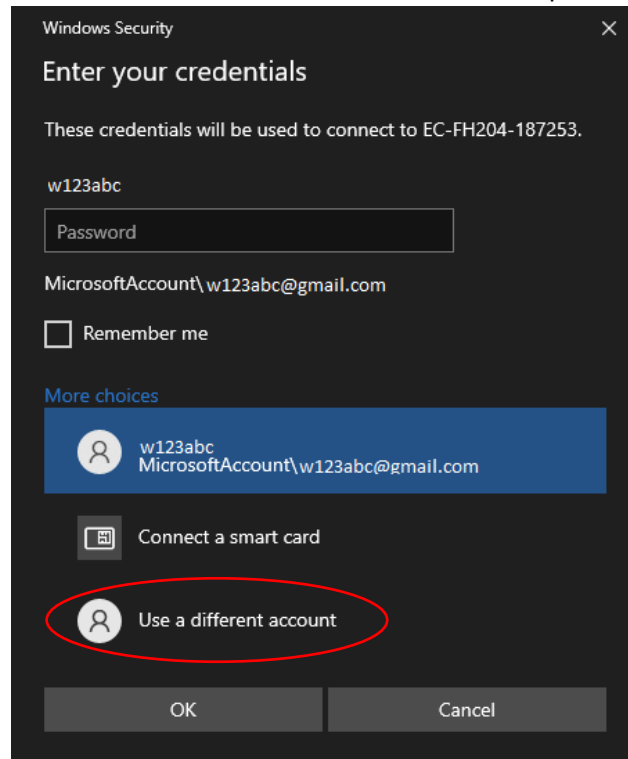
6. At this point you will be prompted to enter your Wright State credentials. Ensure that you preface your Campus Account Username with wright.edu\ as seen below. If you do not see this option, proceed to 6a. Otherwise, continue to 7.



- a. If you do not see the option to input your username before the password, and it is not prefaced by wright.edu\ , click More choices at the bottom of the window.



- b. This will allow you to choose to use a different account and then repeat step 6.



7. Once you have entered your credentials, you will be brought to a logging in screen for a Windows 10 desktop that will eventually take you to the following Desktop. To log off when done, click the red button on the left-hand side that says Logoff This Computer.

