



Remote Lab Access

CaTS now provides the ability for to access campus computers with the **LabStats Remote Access Tool**.

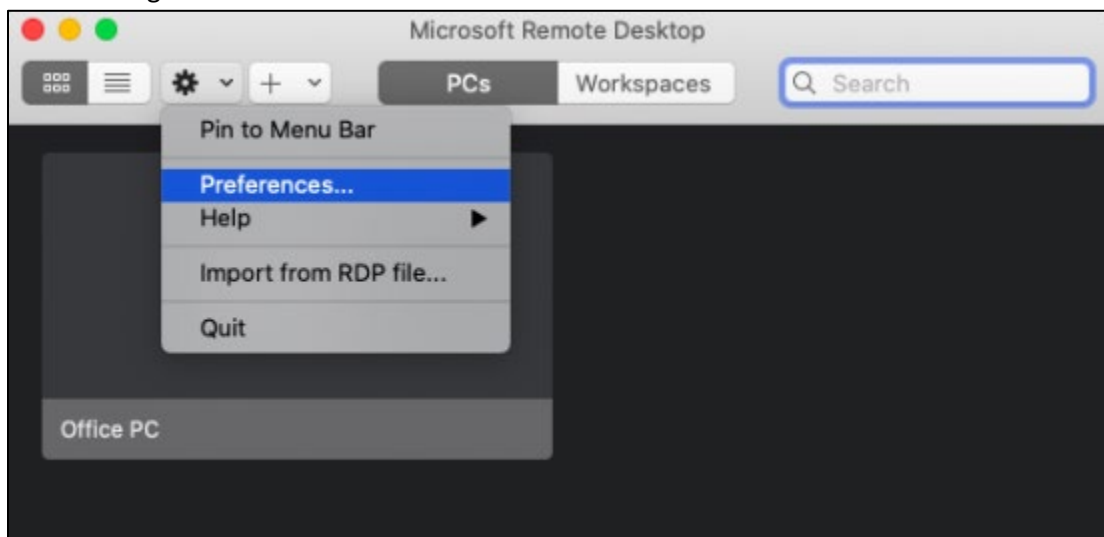
You will need to be connected to the WSU VPN in order to access these devices. This can be found at: <https://www.wright.edu/information-technology/security/use-vpn-software-on-your-pc-or-macintosh>

Mac Users

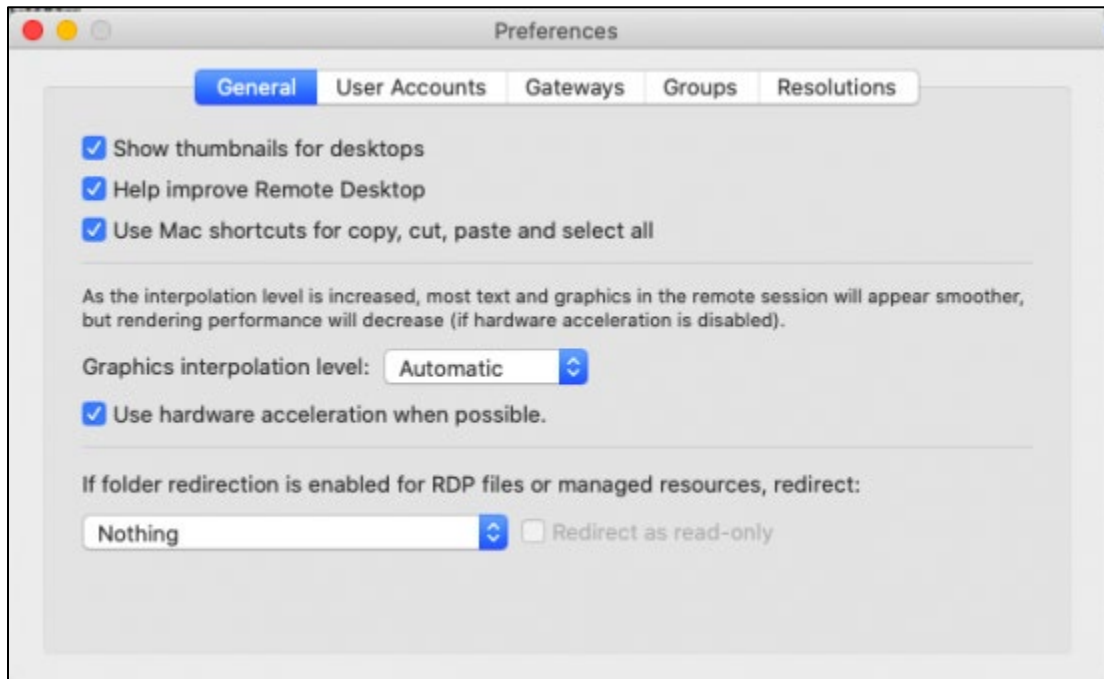
1. In order to use the Labstats website, you will need one additional piece of software. Go to the App Store and search for “Microsoft Remote Desktop”. This software is what will enable you to open the file that is downloaded from the Labstats website.



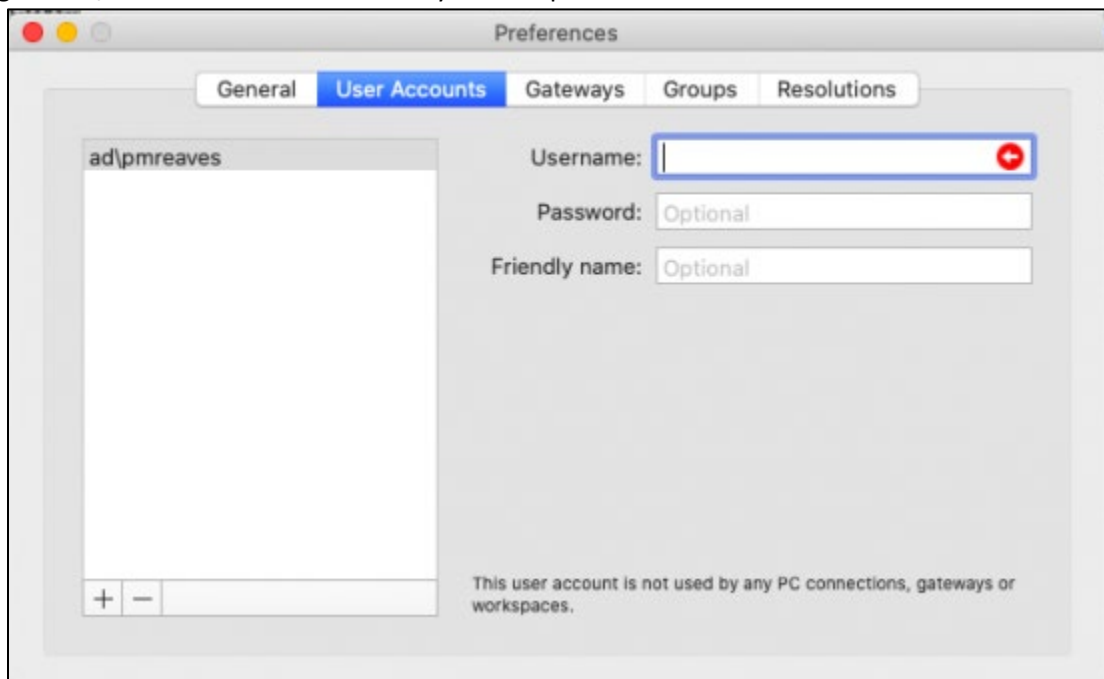
2. Open the Settings menu and click Preferences



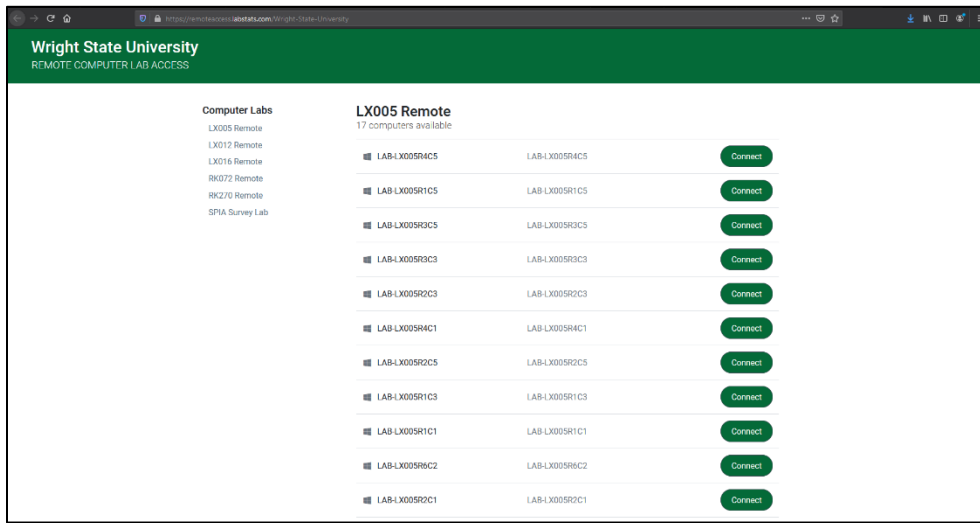
3. In Settings, select the User Accounts tab



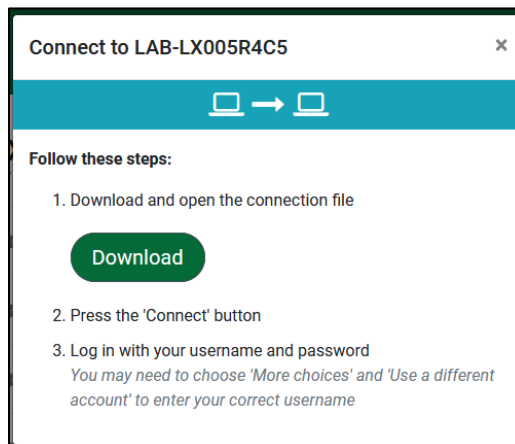
4. Enter your Campus Account Username in the Username textbox in the following format: wright.edu\w123abc where w123abc is your Campus Account Username.



5. Go here: <https://remoteaccess.labstats.com/Wright-State-University>



6. From the list, choose the computer you would like to connect to. If none are listed, there are no computers currently available.
7. Once you have selected a computer you will see the below screen. Select Download and run the downloaded file once it completely downloads.



8. Once you have downloaded the file, run it with WRD and close the desktop when complete.

