

Wright State University

FY 2011-12 Staffing Analysis

UPDATE - 6/20/12

Wright State University FY 2011-12 Staffing Analysis

The FY2011-12 Staffing Analysis consists of the following:

1. University Student/Faculty/Staff Population and Budgeted Compensation (FY 2008 – FY 2012)
 - Student fall headcount and all terms student credit hours/FTE with ratio of FTE to headcount. Faculty/staff FTE and vacancies.
 - Budgeted compensation as percent of total gross budget by college/unit.
2. Staffing data by academic and non-academic colleges and divisions from FY 2008 to FY 2012
 - Faculty/staff FTE and ratio of student FTE to faculty/staff FTE
3. Comparison of student FTE per various faculty/staff categories by college (FY 2008 – FY 2012)
 - Graphical representation of student FTE per faculty/staff by college
 - Graphical representation of student FTE per faculty/staff by employee type
4. FY 2012 faculty/staff ratios sorted by college and rank
 - Student FTE per various faculty/staff categories
5. Wright State University Main Campus as compared to the median for the 13 state supported University Main Campuses
 - Student credit hours taught to undergraduates by faculty appointment status (Fall 2006 – Fall 2010)
 - Ratio of faculty headcount to student FTE and student headcount ratio for tenure-line and all full-time faculty (FY 2011)

Appendix A: Staffing Analysis Definitions

Appendix B: Faculty Staffing Guidelines

Please note that the reports in this document are based on various data sources with different data parameters and therefore there may be some data variations.

1. University Student/Faculty/Staff Population and Budgeted Compensation (FY 2008 – FY 2012)

- Student fall headcount and all terms student credit hours/FTE with ratio of FTE to headcount. Faculty/staff FTE and vacancies.
 - Budgeted compensation as percent of total gross budget by college/unit

Wright State University
University Student/Faculty/Staff Population

FY2012 Update
6/20/12

| | <u>Fall Student Headcount</u> | <u>Fall Student FTE</u> | <u>FTE/ Headcount</u> | | <u>All Terms SCH</u> | <u>All Terms FTE</u> | <u>% Change</u> |
|------|-------------------------------|-------------------------|-----------------------|---------|----------------------|----------------------|-----------------|
| 2007 | 16,913 | 14,090 | 83% | 2007-08 | 665,224 | 14,783 | 1.4% |
| 2008 | 17,662 | 14,591 | 83% | 2008-09 | 689,064 | 15,313 | 3.6% |
| 2009 | 18,786 | 15,318 | 82% | 2009-10 | 719,380 | 15,986 | 4.4% |
| 2010 | 19,793 | 16,022 | 81% | 2010-11 | 751,741 | 16,705 | 4.5% |
| 2011 | 19,600 | 16,083 | 82% | 2011-12 | 742,097 | 16,491 | -1.3% |

Budgeted FTE - Unrestricted Base Budget Positions

| | Filled & Vacancy Positions | | | | Vacancy Positions | | | | AAUP (b) Tenure Line (Filled Positions) | Tenure Line (Vacancy Positions) |
|------|---------------------------------------|------------------|---------------------------|-------------------------|--------------------------|------------------|---------------------------|-------------------------|--|------------------------------------|
| | <u>Faculty *</u> | <u>All Staff</u> | <u>Unclassified Staff</u> | <u>Classified Staff</u> | <u>Faculty *</u> | <u>All Staff</u> | <u>Unclassified Staff</u> | <u>Classified Staff</u> | | |
| FY08 | 769 | 1335 | 627 | 708 | 64 | 84 | 38 | 46 | 491 | 52 |
| FY09 | 780 | 1365 | 655 | 710 | 35 | 70 | 33 | 37 | 502 | 26 |
| FY10 | 786 | 1351 | 656 | 695 | 34 | 111 | 45 | 65 | 506 | 22 |
| FY11 | 776 | 1326 | 667 | 660 | 48 | 86 | 42 | 45 | 481 | 39 |
| FY12 | 775 | 1329 | 652 | 677 | 47 | 108 | 61 | 47 | 476 | 36 |

* Faculty includes Full Professors, Associate Professors, Assistant Professors, Lecturers, and Instructors

Note: Vacancy FTE are included in the Full-Time Faculty, Unclassified and Classified count. SOM vacancy FTE are excluded from all counts.

(b) Source: AAUP Faculty Salary Survey. Includes tenured and tenure track faculty.

Wright State University
 Budgeted Compensation as % of Total Gross Budget

FY2012 Update
6/20/11

Fiscal Year 2011-12

| College/Unit | Benefits | | Budgeted Faculty | | Budgeted Unclassified | | Budgeted Classified | | Total Gross Budget |
|--------------------------------|----------------------|----------------|----------------------|----------------|-----------------------|----------------|----------------------|----------------|-----------------------|
| | \$ | % Gross Budget | \$ | % Gross Budget | \$ | % Gross Budget | \$ | % Gross Budget | Gross Budget |
| President | \$ 577,351 | 16.79% | \$ 635,640 | 18.49% | \$ 1,214,216 | 35.32% | \$ 358,313 | 10.42% | \$ 3,438,165 |
| Provost - Non Academic | \$ 3,834,890 | 33.14% | \$ 458,048 | 3.96% | \$ 8,492,195 | 73.40% | \$ 2,602,305 | 22.49% | \$ 11,570,367 |
| UVCL | \$ 500,748 | 19.26% | \$ 148,612 | 5.72% | \$ 1,228,177 | 47.25% | \$ 206,725 | 7.95% | \$ 2,599,264 |
| VP Business & Fiscal Affairs | \$ 5,607,934 | 14.05% | \$ - | 0.00% | \$ 5,444,039 | 13.64% | \$ 7,322,346 | 18.34% | \$ 39,920,064 |
| VP Student Affairs | \$ 3,194,696 | 19.80% | \$ 10,000 | 0.06% | \$ 6,492,382 | 40.23% | \$ 2,420,590 | 15.00% | \$ 16,136,616 |
| VP University Advancement | \$ 690,842 | 24.01% | \$ - | 0.00% | \$ 1,821,323 | 63.30% | \$ 310,404 | 10.79% | \$ 2,877,301 |
| VP Curriculum & Instruction | \$ 786,077 | 13.69% | \$ 864,847 | 15.06% | \$ 1,429,479 | 24.90% | \$ 327,801 | 5.71% | \$ 5,741,506 |
| Other Institutional | \$ 4,722,235 | 9.26% | \$ 2,983 | 0.01% | \$ 21,540 | 0.04% | \$ 3,000 | 0.01% | \$ 50,976,844 |
| Sub Total | \$ 19,914,774 | 14.94% | \$ 2,120,130 | 1.59% | \$ 26,143,350 | 19.62% | \$ 13,551,485 | 10.17% | \$ 133,260,126 |
| Business | \$ 2,317,027 | 15.55% | \$ 7,996,610 | 53.68% | \$ 540,841 | 3.63% | \$ 483,586 | 3.25% | \$ 14,895,993 |
| Education & Human Service | \$ 1,681,788 | 14.04% | \$ 4,813,062 | 40.19% | \$ 777,063 | 6.49% | \$ 472,625 | 3.95% | \$ 11,975,265 |
| Engineering & Computer Science | \$ 2,548,124 | 16.66% | \$ 8,264,699 | 54.03% | \$ 1,261,696 | 8.25% | \$ 548,559 | 3.59% | \$ 15,297,105 |
| Lake Campus | \$ 835,766 | 9.03% | \$ 1,895,705 | 20.49% | \$ 755,382 | 8.16% | \$ 285,823 | 3.09% | \$ 9,254,017 |
| Liberal Arts | \$ 3,913,223 | 16.96% | \$ 14,556,112 | 63.07% | \$ 765,195 | 3.32% | \$ 699,864 | 3.03% | \$ 23,078,442 |
| Library | \$ 961,745 | 10.88% | \$ - | 0.00% | \$ 2,340,578 | 26.49% | \$ 844,497 | 9.56% | \$ 8,836,023 |
| Nursing | \$ 1,220,584 | 19.27% | \$ 3,482,947 | 54.99% | \$ 458,900 | 7.24% | \$ 434,196 | 6.85% | \$ 6,334,182 |
| Professional Psychology | \$ 806,255 | 16.60% | \$ 1,978,729 | 40.74% | \$ 672,871 | 13.85% | \$ 359,715 | 7.41% | \$ 4,856,870 |
| Graduate Studies | \$ 677,916 | 8.19% | \$ 440,546 | 5.32% | \$ 1,371,022 | 16.57% | \$ 312,886 | 3.78% | \$ 8,274,679 |
| Science & Mathematics | \$ 3,793,696 | 15.06% | \$ 12,509,415 | 49.64% | \$ 1,535,942 | 6.10% | \$ 847,636 | 3.36% | \$ 25,198,821 |
| Sub Total | \$ 18,756,123 | 14.65% | \$ 55,937,824 | 43.70% | \$ 10,479,490 | 8.19% | \$ 5,289,387 | 4.13% | \$ 128,001,396 |
| Total | \$ 38,670,897 | 14.80% | \$ 58,057,954 | 22.22% | \$ 36,622,840 | 14.02% | \$ 18,840,872 | 7.21% | \$ 261,261,522 |
| Medicine | \$ 4,841,695 | 14.28% | \$ 12,745,356 | 37.60% | \$ 2,818,377 | 8.31% | \$ 2,934,077 | 8.66% | \$ 33,898,918 |

Note: Gross Budget is shown net of Cost Recoveries.

Wright State University
 Budgeted Compensation as % of Total Gross Budget

FY2011 Update
 4/12/11

Fiscal Year 2010-11

| College/Unit | Benefits | | Budgeted Faculty | | Budgeted Unclassified | | Budgeted Classified | | Total Gross Budget |
|--------------------------------|----------------------|----------------|----------------------|----------------|-----------------------|----------------|----------------------|----------------|-----------------------|
| | \$ | % Gross Budget | \$ | % Gross Budget | \$ | % Gross Budget | \$ | % Gross Budget | Gross Budget |
| President | \$ 586,407 | 18.69% | \$ 540,554 | 17.23% | \$ 1,007,830 | 32.12% | \$ 313,905 | 10.00% | \$ 3,137,670 |
| Provost - Non Academic | \$ 3,962,903 | 43.21% | \$ 442,075 | 4.82% | \$ 7,748,800 | 84.50% | \$ 2,692,434 | 29.36% | \$ 9,170,330 |
| UVCL | \$ 541,584 | 20.14% | \$ 144,988 | 5.39% | \$ 1,212,041 | 45.06% | \$ 204,278 | 7.60% | \$ 2,689,563 |
| VP Business & Fiscal Affairs | \$ 5,778,838 | 14.14% | \$ - | 0.00% | \$ 5,726,573 | 14.02% | \$ 6,883,210 | 16.85% | \$ 40,857,095 |
| VP Student Affairs | \$ 2,899,593 | 22.09% | \$ 10,000 | 0.08% | \$ 5,644,598 | 43.00% | \$ 2,015,857 | 15.36% | \$ 13,127,340 |
| VP University Advancement | \$ 741,426 | 20.57% | \$ - | 0.00% | \$ 1,666,464 | 46.23% | \$ 298,980 | 8.29% | \$ 3,604,452 |
| VP Curriculum & Instruction | \$ 867,507 | 14.52% | \$ 841,594 | 14.09% | \$ 1,499,979 | 25.10% | \$ 314,305 | 5.26% | \$ 5,974,990 |
| Other Institutional | \$ 3,697,827 | 6.06% | \$ 2,983 | 0.00% | \$ 21,540 | 0.04% | \$ 3,000 | 0.00% | \$ 60,974,184 |
| Sub Total | \$ 19,076,086 | 13.67% | \$ 1,982,194 | 1.42% | \$ 24,527,825 | 17.58% | \$ 12,725,969 | 9.12% | \$ 139,535,625 |
| Business | \$ 2,632,374 | 17.77% | \$ 7,640,728 | 51.58% | \$ 580,009 | 3.92% | \$ 494,445 | 3.34% | \$ 14,812,349 |
| Education & Human Service | \$ 1,929,072 | 16.70% | \$ 4,741,380 | 41.04% | \$ 750,106 | 6.49% | \$ 472,137 | 4.09% | \$ 11,553,115 |
| Engineering & Computer Science | \$ 2,709,464 | 18.23% | \$ 7,474,598 | 50.29% | \$ 1,219,091 | 8.20% | \$ 478,330 | 3.22% | \$ 14,862,008 |
| Lake Campus | \$ 922,762 | 10.80% | \$ 1,751,522 | 20.51% | \$ 740,153 | 8.67% | \$ 262,573 | 3.07% | \$ 8,541,028 |
| Liberal Arts | \$ 4,439,095 | 18.28% | \$ 13,778,869 | 56.75% | \$ 805,926 | 3.32% | \$ 696,453 | 2.87% | \$ 24,280,109 |
| Library | \$ 1,043,452 | 11.37% | \$ - | 0.00% | \$ 2,290,110 | 24.95% | \$ 857,543 | 9.34% | \$ 9,179,393 |
| Nursing | \$ 1,366,416 | 21.05% | \$ 3,350,158 | 51.60% | \$ 450,134 | 6.93% | \$ 429,541 | 6.62% | \$ 6,492,215 |
| Professional Psychology | \$ 893,503 | 17.56% | \$ 1,956,659 | 38.46% | \$ 685,937 | 13.48% | \$ 326,021 | 6.41% | \$ 5,087,119 |
| Graduate Studies | \$ 735,237 | 9.40% | \$ 429,202 | 5.49% | \$ 1,379,884 | 17.64% | \$ 305,272 | 3.90% | \$ 7,820,567 |
| Science & Mathematics | \$ 5,413,990 | 20.86% | \$ 11,907,092 | 45.89% | \$ 1,492,457 | 5.75% | \$ 823,505 | 3.17% | \$ 25,949,725 |
| Sub Total | \$ 22,085,365 | 17.18% | \$ 53,030,208 | 41.24% | \$ 10,393,807 | 8.08% | \$ 5,145,819 | 4.00% | \$ 128,577,628 |
| Total | \$ 41,161,451 | 15.35% | \$ 55,012,402 | 20.52% | \$ 34,921,632 | 13.02% | \$ 17,871,788 | 6.67% | \$ 268,113,253 |
| Medicine | \$ 5,847,075 | 17.25% | \$ 13,077,229 | 38.59% | \$ 3,278,484 | 9.67% | \$ 3,168,122 | 9.35% | \$ 33,891,319 |

Note: Gross Budget is shown net of Cost Recoveries.

Wright State University
Budgeted Compensation as % of Total Gross Budget

FY2010 Update
6/28/10

Fiscal Year 2009-10

| College/Unit | Benefits | % Gross | Budgeted Faculty | % Gross | Budgeted Unclassified | % Gross | Budgeted Classified | % Gross | Total Gross Budget |
|--------------------------------|----------------------|---------------|----------------------|---------------|-----------------------|---------------|----------------------|--------------|-----------------------|
| | \$ | Budget | \$ | Budget | \$ | Budget | \$ | Budget | Gross Budget |
| President | \$ 379,543 | 16.56% | \$ 540,044 | 23.56% | \$ 311,080 | 13.57% | \$ 309,217 | 13.49% | \$ 2,292,593 |
| Provost - Non Academic | \$ 4,831,627 | 14.12% | \$ 454,778 | 1.33% | \$ 8,610,367 | 25.16% | \$ 3,762,882 | 11.00% | \$ 34,219,944 |
| UVCL | \$ 556,295 | 18.30% | \$ 143,988 | 4.74% | \$ 1,245,779 | 40.98% | \$ 209,723 | 6.90% | \$ 3,040,157 |
| VP Business & Fiscal Affairs | \$ 5,784,250 | 13.91% | \$ - | 0.00% | \$ 5,862,957 | 14.10% | \$ 6,846,382 | 16.46% | \$ 41,595,914 |
| VP Student Affairs | \$ 2,993,933 | 25.19% | \$ 10,000 | 0.08% | \$ 5,560,720 | 46.79% | \$ 2,147,825 | 18.07% | \$ 11,884,193 |
| VP University Advancement | \$ 1,195,068 | 22.62% | \$ - | 0.00% | \$ 2,866,454 | 54.26% | \$ 530,822 | 10.05% | \$ 5,282,950 |
| VP Curriculum & Instruction | \$ 1,225,097 | 16.92% | \$ 820,447 | 11.33% | \$ 2,110,492 | 29.15% | \$ 559,660 | 7.73% | \$ 7,241,086 |
| Other Institutional | \$ 2,734,656 | 6.04% | \$ - | 0.00% | \$ 3,000 | 0.01% | \$ 3,000 | 0.01% | \$ 45,260,361 |
| Sub Total | \$ 19,700,469 | 13.06% | \$ 1,969,257 | 1.31% | \$ 26,570,849 | 17.62% | \$ 14,369,511 | 9.53% | \$ 150,817,198 |
| Business | \$ 2,876,136 | 17.27% | \$ 7,846,890 | 47.12% | \$ 563,323 | 3.38% | \$ 512,906 | 3.08% | \$ 16,651,827 |
| Education & Human Service | \$ 2,094,406 | 17.11% | \$ 4,762,574 | 38.91% | \$ 677,851 | 5.54% | \$ 579,613 | 4.73% | \$ 12,241,419 |
| Engineering & Computer Science | \$ 2,772,718 | 19.19% | \$ 7,019,700 | 48.59% | \$ 1,272,918 | 8.81% | \$ 492,123 | 3.41% | \$ 14,446,635 |
| Lake Campus | \$ 926,890 | 12.42% | \$ 1,666,469 | 22.34% | \$ 794,194 | 10.65% | \$ 251,147 | 3.37% | \$ 7,460,129 |
| Liberal Arts | \$ 4,705,903 | 19.38% | \$ 13,516,885 | 55.67% | \$ 751,853 | 3.10% | \$ 700,618 | 2.89% | \$ 24,280,109 |
| Library | \$ 1,076,539 | 11.69% | \$ - | 0.00% | \$ 2,291,198 | 24.89% | \$ 943,705 | 10.25% | \$ 9,206,174 |
| Nursing | \$ 1,398,652 | 20.76% | \$ 3,267,496 | 48.50% | \$ 440,673 | 6.54% | \$ 427,719 | 6.35% | \$ 6,736,540 |
| Professional Psychology | \$ 969,947 | 19.56% | \$ 1,880,160 | 37.93% | \$ 747,655 | 15.08% | \$ 355,915 | 7.18% | \$ 4,957,570 |
| Graduate Studies | \$ 720,977 | 9.39% | \$ 401,310 | 5.23% | \$ 1,293,260 | 16.85% | \$ 328,896 | 4.28% | \$ 7,676,903 |
| Science & Mathematics | \$ 4,556,375 | 17.54% | \$ 11,909,743 | 45.84% | \$ 1,478,560 | 5.69% | \$ 844,558 | 3.25% | \$ 25,980,655 |
| Sub Total | \$ 22,098,543 | 17.05% | \$ 52,271,227 | 40.32% | \$ 10,311,485 | 7.95% | \$ 5,437,200 | 4.19% | \$ 129,637,961 |
| Total | \$ 41,799,012 | 14.90% | \$ 54,240,484 | 19.34% | \$ 36,882,334 | 13.15% | \$ 19,806,711 | 7.06% | \$ 280,455,159 |
| Medicine | \$ 6,454,727 | 19.05% | \$ 13,084,865 | 38.61% | \$ 3,172,592 | 9.36% | \$ 3,689,743 | 10.89% | \$ 33,891,319 |

Note: Gross Budget is shown net of Cost Recoveries.

Wright State University
 Budgeted Compensation as % Total Gross Budget

2009 Update
8/5/09

Fiscal Year 2008-09

| College/Unit | Benefits \$ | % Gross Budget | Budgeted Faculty \$ | % Gross Budget | Budgeted Unclassified \$ | % Gross Budget | Budgeted Classified \$ | % Gross Budget | Total Gross Budget |
|--------------------------------|----------------------|-------------------|---------------------------|-------------------|--------------------------------|-------------------|------------------------------|-------------------|-----------------------|
| President | \$ 308,974 | 15.45% | \$ 518,373 | 25.92% | \$ 176,067 | 8.81% | \$ 296,821 | 14.84% | \$ 1,999,569 |
| Provost - Non Academic | \$ 4,918,247 | 21.56% | \$ 583,971 | 2.56% | \$ 9,348,712 | 40.97% | \$ 3,501,066 | 15.34% | \$ 22,816,954 |
| VP Business & Fiscal Affairs | \$ 5,471,389 | 13.26% | \$ - | 0.00% | \$ 5,583,893 | 13.53% | \$ 7,022,298 | 17.02% | \$ 41,260,939 |
| VP Student Affairs | \$ 2,875,954 | 22.06% | \$ - | 0.00% | \$ 5,353,981 | 41.08% | \$ 2,023,300 | 15.52% | \$ 13,034,239 |
| VP University Advancement | \$ 924,885 | 19.82% | \$ - | 0.00% | \$ 2,253,349 | 48.28% | \$ 426,773 | 9.14% | \$ 4,667,432 |
| VP Curriculum & Instruction | \$ 1,456,811 | 18.10% | \$ 775,536 | 9.64% | \$ 2,274,902 | 28.27% | \$ 987,442 | 12.27% | \$ 8,048,137 |
| Other Institutional | \$ 1,648,129 | 5.64% | \$ - | 0.00% | \$ 5,198 | 0.02% | \$ 3,000 | 0.01% | \$ 29,204,979 |
| Sub Total | \$ 17,604,390 | 14.55% | \$ 1,877,880 | 1.55% | \$ 24,996,102 | 20.65% | \$ 14,260,698 | 11.78% | \$ 121,032,249 |
| Business | \$ 2,630,392 | 15.44% | \$ 7,509,126 | 44.07% | \$ 611,271 | 3.59% | \$ 497,489 | 2.92% | \$ 17,038,783 |
| Education & Human Service | \$ 1,984,970 | 15.67% | \$ 4,816,453 | 38.03% | \$ 714,543 | 5.64% | \$ 583,569 | 4.61% | \$ 12,664,256 |
| Engineering & Computer Science | \$ 2,588,874 | 17.83% | \$ 6,848,458 | 47.16% | \$ 1,272,918 | 8.77% | \$ 482,822 | 3.32% | \$ 14,522,073 |
| Lake Campus | \$ 937,999 | 12.04% | \$ 1,662,138 | 21.33% | \$ 834,512 | 10.71% | \$ 270,664 | 3.47% | \$ 7,791,649 |
| Liberal Arts | \$ 4,248,353 | 17.68% | \$ 13,135,936 | 54.68% | \$ 761,321 | 3.17% | \$ 632,145 | 2.63% | \$ 24,024,278 |
| Library | \$ 1,058,317 | 11.48% | \$ - | 0.00% | \$ 2,229,213 | 24.18% | \$ 952,988 | 10.34% | \$ 9,219,212 |
| Nursing | \$ 1,251,151 | 19.34% | \$ 3,170,030 | 48.99% | \$ 423,711 | 6.55% | \$ 403,283 | 6.23% | \$ 6,470,274 |
| Professional Psychology | \$ 880,466 | 18.43% | \$ 1,827,822 | 38.26% | \$ 714,562 | 14.96% | \$ 310,349 | 6.50% | \$ 4,777,933 |
| Graduate Studies | \$ 660,514 | 9.39% | \$ 379,912 | 5.40% | \$ 1,229,317 | 17.47% | \$ 310,402 | 4.41% | \$ 7,034,855 |
| Science & Mathematics | \$ 4,179,684 | 16.11% | \$ 11,782,148 | 45.40% | \$ 1,286,736 | 4.96% | \$ 892,625 | 3.44% | \$ 25,951,281 |
| Sub Total | \$ 20,420,719 | 15.77% | \$ 51,132,024 | 39.49% | \$ 10,078,103 | 7.78% | \$ 5,336,336 | 4.12% | \$ 129,494,594 |
| Total | \$ 38,025,109 | 15.18% | \$ 53,009,904 | 21.16% | \$ 35,074,205 | 14.00% | \$ 19,597,035 | 7.82% | \$ 250,526,843 |
| Medicine | \$ 5,806,577 | 12.30% | \$ 13,018,624 | 27.57% | \$ 2,726,198 | 5.77% | \$ 3,194,921 | 6.77% | \$ 47,225,898 |

Note: Gross Budget is shown net of Cost Recoveries.

Wright State University
 Budgeted Compensation as % of Total Gross Budget

2008 Update
 9/30/08

Fiscal Year 2007-08 *

| College/Unit | Benefits \$ | % Gross Budget | Budgeted Faculty \$ | % Gross Budget | Budgeted Unclassified \$ | % Gross Budget | Budgeted Classified \$ | % Gross Budget | Total Gross Budget |
|--------------------------------|----------------------|-------------------|---------------------------|-------------------|--------------------------------|-------------------|------------------------------|-------------------|-----------------------|
| President | \$ 300,028 | 15.15% | \$ 501,149 | 25.30% | \$ 164,375 | 8.30% | \$ 263,878 | 13.32% | \$ 1,980,823 |
| Provost - Non Academic | \$ 5,020,330 | 15.33% | \$ 558,152 | 1.70% | \$ 8,800,769 | 26.87% | \$ 3,262,183 | 9.96% | \$ 32,757,048 |
| VP Business & Fiscal Affairs | \$ 5,240,112 | 12.95% | \$ - | 0.00% | \$ 5,179,942 | 12.80% | \$ 7,011,318 | 17.32% | \$ 40,474,496 |
| VP Student Affairs | \$ 2,853,301 | 21.82% | \$ - | 0.00% | \$ 5,008,727 | 38.30% | \$ 1,952,243 | 14.93% | \$ 13,078,465 |
| VP University Advancement | \$ 1,039,048 | 22.19% | \$ - | 0.00% | \$ 2,224,321 | 47.50% | \$ 404,886 | 8.65% | \$ 4,682,532 |
| VP Curriculum & Instruction | \$ 1,408,407 | 18.36% | \$ 664,507 | 8.66% | \$ 2,142,835 | 27.94% | \$ 911,478 | 11.88% | \$ 7,669,933 |
| Other Institutional | \$ 3,391 | 0.01% | \$ - | 0.00% | \$ 5,198 | 0.02% | \$ 3,000 | 0.01% | \$ 27,230,665 |
| Sub Total | \$ 15,864,617 | 12.41% | \$ 1,723,808 | 1.35% | \$ 23,526,167 | 18.40% | \$ 13,808,986 | 10.80% | \$ 127,873,962 |
| Business | \$ 2,285,849 | 16.17% | \$ 7,201,316 | 50.94% | \$ 573,949 | 4.06% | \$ 521,003 | 3.69% | \$ 14,137,368 |
| Education & Human Service | \$ 1,684,840 | 14.57% | \$ 4,551,680 | 39.37% | \$ 706,984 | 6.12% | \$ 555,998 | 4.81% | \$ 11,560,373 |
| Engineering & Computer Science | \$ 2,300,361 | 17.11% | \$ 6,480,592 | 48.19% | \$ 1,198,868 | 8.92% | \$ 337,959 | 2.51% | \$ 13,446,654 |
| Lake Campus | \$ 852,958 | 10.87% | \$ 1,585,156 | 20.20% | \$ 839,528 | 10.70% | \$ 290,615 | 3.70% | \$ 7,847,754 |
| Liberal Arts | \$ 3,869,509 | 15.94% | \$ 12,930,874 | 53.26% | \$ 761,321 | 3.14% | \$ 632,145 | 2.60% | \$ 24,277,916 |
| Library | \$ 1,227,004 | 13.27% | \$ - | 0.00% | \$ 2,172,326 | 23.49% | \$ 995,716 | 10.77% | \$ 9,248,968 |
| Nursing | \$ 1,084,527 | 16.17% | \$ 2,835,389 | 42.28% | \$ 422,751 | 6.30% | \$ 424,379 | 6.33% | \$ 6,705,665 |
| Professional Psychology | \$ 757,524 | 17.45% | \$ 1,553,939 | 35.80% | \$ 553,722 | 12.76% | \$ 341,471 | 7.87% | \$ 4,340,539 |
| Graduate Studies | \$ 585,596 | 8.80% | \$ 184,912 | 2.78% | \$ 1,055,283 | 15.86% | \$ 286,086 | 4.30% | \$ 6,654,391 |
| Science & Mathematics | \$ 3,782,112 | 14.66% | \$ 11,369,130 | 44.08% | \$ 1,275,112 | 4.94% | \$ 867,136 | 3.36% | \$ 25,794,011 |
| Sub Total | \$ 18,430,280 | 14.86% | \$ 48,692,988 | 39.26% | \$ 9,559,844 | 7.71% | \$ 5,252,508 | 4.24% | \$ 124,013,639 |
| Total | \$ 34,294,897 | 13.62% | \$ 50,416,796 | 20.02% | \$ 33,086,011 | 13.14% | \$ 19,061,494 | 7.57% | \$ 251,887,601 |
| Medicine | \$ 5,346,817 | 9.29% | \$ 12,233,360 | 21.27% | \$ 2,447,729 | 4.26% | \$ 2,961,533 | 5.15% | \$ 57,524,541 |

Note: Gross Budget is shown net of Cost Recoveries.

* Please note organizational structures change year to year.

1. Staffing data by instructional and non-instructional colleges and divisions from FY 2008 to FY 2012
 - Faculty/staff FTE and ratio of student FTE to faculty/staff

Wright State University
Ratios of Faculty/Staff FTE and Student FTE

FY2012 Update
6/20/12

| | Total Faculty FTE (c+e+g+h) | Student FTE per Total Faculty FTE | Total Full Time Faculty FTE (a) | Student FTE per Total Full Time Faculty FTE (b) | Tenure-line Faculty FTE (c) | Student FTE per Tenure-line Faculty FTE (d) | Non Tenure-line Faculty FTE (e) | Student FTE per Non Tenure-line Faculty FTE (f) | Adjunct FTE (g) | Grad Teach Asst. FTE (h) | All Staff FTE (i) | Student FTE per All Staff FTE (j) | Clsfd. Staff FTE (k) | Student FTE per Clsfd. Staff FTE (l) | Unclsfd. Staff FTE (m) | Student FTE per Unclsfd. Staff FTE (n) | Fall Term Total Student FTE (SCH/15) (o) | % GR SCH (p) |
|--|---------------------------------------|--|---|---|---------------------------------------|---|---|---|---------------------------|------------------------------------|-----------------------------|---|--------------------------------|--|----------------------------------|--|--|------------------------|
| College Staffing Data (FY2008 - FY2012) | | | | | | | | | | | | | | | | | | |
| Liberal Arts | | | | | | | | | | | | | | | | | | |
| FY 2008 | 260.8 | 17.6 | 215.5 | 21.3 | 160.0 | 28.7 | 55.5 | 82.7 | 38.7 | 6.6 | 35.8 | 128.3 | 23.0 | 199.7 | 12.8 | 358.8 | 4,592 | 4% |
| FY 2009 | 277.3 | 17.5 | 216.5 | 22.4 | 162.0 | 29.9 | 54.5 | 89.0 | 49.2 | 11.6 | 37.2 | 130.3 | 23.9 | 202.7 | 13.3 | 365.0 | 4,851 | 3% |
| FY 2010 | 278.0 | 18.0 | 217.5 | 23.0 | 162.0 | 30.9 | 55.5 | 90.2 | 51.9 | 8.6 | 37.8 | 132.5 | 23.0 | 217.7 | 14.8 | 338.6 | 5,008 | 3% |
| FY 2011 | 289.3 | 18.0 | 219.0 | 23.7 | 163.3 | 31.8 | 55.8 | 93.2 | 61.3 | 8.9 | 38.8 | 134.0 | 23.0 | 225.9 | 15.8 | 329.2 | 5,197 | 3% |
| FY 2012 | 292.0 | 17.8 | 220.0 | 23.7 | 161.3 | 32.3 | 58.8 | 88.7 | 62.8 | 9.2 | 38.0 | 137.1 | 23.0 | 226.5 | 15.0 | 347.2 | 5,211 | 3% |
| Business | | | | | | | | | | | | | | | | | | |
| FY 2008 | 82.9 | 18.8 | 71.3 | 21.9 | 60.3 | 25.9 | 11.0 | 141.8 | 11.6 | 0.0 | 28.6 | 54.5 | 17.5 | 89.1 | 11.1 | 140.5 | 1,559 | 18% |
| FY 2009 | 80.3 | 19.6 | 72.3 | 21.7 | 62.3 | 25.2 | 10.0 | 157.0 | 7.9 | 0.0 | 26.4 | 59.6 | 17.3 | 90.9 | 9.1 | 172.9 | 1,570 | 19% |
| FY 2010 | 78.2 | 20.7 | 71.8 | 22.6 | 60.8 | 26.7 | 11.0 | 147.6 | 6.4 | 0.0 | 26.9 | 60.4 | 17.8 | 91.3 | 9.1 | 178.8 | 1,623 | 22% |
| FY 2011 | 80.2 | 19.6 | 66.8 | 23.6 | 56.8 | 27.7 | 10.0 | 157.5 | 13.3 | 0.0 | 26.9 | 58.7 | 16.3 | 96.8 | 10.6 | 148.9 | 1,575 | 20% |
| FY 2012 | 78.8 | 20.1 | 69.8 | 22.7 | 58.8 | 26.9 | 11.0 | 144.0 | 8.9 | 0.0 | 27.5 | 57.6 | 17.5 | 90.4 | 10.0 | 158.3 | 1,583 | 22% |
| Education | | | | | | | | | | | | | | | | | | |
| FY 2008 | 100.4 | 14.2 | 72.1 | 19.8 | 60.1 | 23.8 | 12.0 | 119.0 | 28.3 | 0.0 | 33.8 | 42.3 | 19.0 | 75.2 | 14.8 | 96.5 | 1,428 | 36% |
| FY 2009 | 113.1 | 12.4 | 72.8 | 19.2 | 59.8 | 23.4 | 13.0 | 107.5 | 40.3 | 0.0 | 33.5 | 41.7 | 20.0 | 69.9 | 13.5 | 103.5 | 1,398 | 37% |
| FY 2010 | 105.5 | 13.3 | 71.1 | 19.7 | 55.6 | 25.2 | 15.5 | 90.3 | 34.4 | 0.0 | 33.7 | 41.5 | 18.0 | 77.7 | 15.7 | 89.1 | 1,399 | 38% |
| FY 2011 | 105.8 | 13.9 | 66.8 | 22.0 | 48.3 | 30.4 | 18.5 | 79.3 | 39.0 | 0.0 | 32.0 | 45.8 | 16.0 | 91.6 | 16.0 | 91.7 | 1,467 | 37% |
| FY 2012 | 101.1 | 13.7 | 65.0 | 21.3 | 46.8 | 29.6 | 18.2 | 76.2 | 36.1 | 0.0 | 30.0 | 46.1 | 15.0 | 92.3 | 15.0 | 92.3 | 1,384 | 37% |
| Science & Math | | | | | | | | | | | | | | | | | | |
| FY 2008 | 185.5 | 16.7 | 148.1 | 21.0 | 129.1 | 24.1 | 19.0 | 163.5 | 17.9 | 19.5 | 51.6 | 60.2 | 28.0 | 110.9 | 23.6 | 131.6 | 3,106 | 8% |
| FY 2009 | 190.7 | 17.0 | 147.1 | 22.1 | 129.1 | 25.1 | 18.0 | 180.2 | 18.2 | 25.4 | 51.8 | 62.6 | 26.5 | 122.4 | 25.3 | 128.0 | 3,244 | 8% |
| FY 2010 | 187.6 | 18.4 | 146.8 | 23.5 | 128.8 | 26.8 | 18.0 | 191.4 | 15.0 | 25.7 | 51.3 | 67.1 | 26.1 | 132.0 | 25.2 | 136.6 | 3,446 | 7% |
| FY 2011 | 192.5 | 19.1 | 147.9 | 24.8 | 129.9 | 28.3 | 18.0 | 204.0 | 15.5 | 29.0 | 50.6 | 72.6 | 24.3 | 151.4 | 26.3 | 139.4 | 3,671 | 7% |
| FY 2012 | 190.0 | 20.2 | 146.8 | 26.1 | 129.5 | 29.6 | 17.3 | 221.1 | 17.8 | 25.4 | 50.1 | 76.5 | 23.8 | 161.3 | 26.3 | 145.5 | 3,831 | 7% |

Data sources for Academic Faculty FTE:

Tenure-line Faculty, Full-Time Non Tenure-line Faculty, Classified Staff, and Unclassified Staff FTE are budgeted FTE (unrestricted base budget).

Adjunct FTE is calculated using the SSN's of Adjuncts from HR and merged with HEI files for Course Credit Hours (CCH) taught. 12 CCH equals 1 FTE.

Teaching Assistant FTE is based on HEI files. Each Graduate Teaching Assistant equals .33 FTE.

All Faculty and Staff FTE are listed according to where the FTE was expensed. Vacancies are included in the FTE count.

Wright State University
Ratios of Faculty/Staff FTE and Student FTE

FY2012 Update
6/20/12

| | Total Faculty FTE (c+e+g+h) | Student FTE per Total Faculty FTE | Total Full Time Faculty FTE | Student FTE per Total Full Time Faculty FTE | Tenure-line Faculty FTE | Student FTE per Tenure-line Faculty FTE | Non Tenure-line Faculty FTE | Student FTE per Non Tenure-line Faculty FTE | Adjunct FTE | Grad Teach Asst. FTE | All Staff FTE | Student FTE per All Staff FTE | Clsfd. Staff FTE | Student FTE per Clsfd. Staff FTE | Unclsfd. Staff FTE | Student FTE per Unclsfd. Staff FTE | Fall Term Total Student FTE (SCH/15) | % GR SCH |
|---|-----------------------------|-----------------------------------|-----------------------------|---|-------------------------|---|-----------------------------|---|-------------|----------------------|---------------|-------------------------------|------------------|----------------------------------|--------------------|------------------------------------|--------------------------------------|----------|
| College Staffing Data (continued) | | | | | | | | | | | | | | | | | | |
| Engineering & Computer Science | | | | | | | | | | | | | | | | | | |
| FY 2008 | 91.6 | 11.5 | 74.5 | 14.2 | 67.5 | 15.6 | 7.0 | 150.9 | 12.5 | 4.6 | 41.1 | 25.7 | 17.0 | 62.1 | 24.1 | 43.8 | 1,056 | 32% |
| FY 2009 | 93.7 | 11.3 | 75.2 | 14.1 | 68.2 | 15.6 | 7.0 | 151.8 | 12.9 | 5.6 | 39.1 | 27.2 | 17.1 | 62.1 | 22.0 | 48.3 | 1,063 | 29% |
| FY 2010 | 96.3 | 11.4 | 78.4 | 14.0 | 70.4 | 15.6 | 8.0 | 137.0 | 10.3 | 7.6 | 39.7 | 27.6 | 17.3 | 63.3 | 22.4 | 48.9 | 1,096 | 26% |
| FY 2011 | 92.6 | 12.6 | 75.8 | 15.4 | 68.8 | 16.9 | 7.0 | 166.4 | 9.9 | 6.9 | 37.7 | 30.9 | 15.8 | 74.0 | 21.9 | 53.1 | 1,165 | 24% |
| FY 2012 | 95.8 | 12.0 | 77.8 | 14.8 | 69.8 | 16.5 | 8.0 | 143.7 | 10.4 | 7.6 | 37.5 | 30.7 | 14.8 | 78.0 | 22.7 | 50.6 | 1,150 | 21% |
| Nursing | | | | | | | | | | | | | | | | | | |
| FY 2008 | 45.6 | 12.1 | 44.5 | 12.4 | 24.5 | 22.5 | 20.0 | 27.6 | 1.1 | 0.0 | 21.5 | 25.7 | 14.0 | 39.4 | 7.5 | 73.6 | 552 | 18% |
| FY 2009 | 46.0 | 12.3 | 45.5 | 12.4 | 25.5 | 22.1 | 20.0 | 28.2 | 0.5 | 0.0 | 23.4 | 24.1 | 13.9 | 40.6 | 9.5 | 59.3 | 564 | 17% |
| FY 2010 | 49.6 | 12.0 | 46.5 | 12.8 | 24.5 | 24.3 | 22.0 | 27.0 | 3.1 | 0.0 | 23.4 | 25.4 | 13.9 | 42.8 | 9.5 | 62.6 | 596 | 19% |
| FY 2011 | 49.5 | 12.4 | 48.8 | 12.6 | 23.9 | 25.7 | 24.9 | 24.7 | 0.7 | 0.0 | 22.2 | 27.6 | 13.7 | 44.8 | 8.5 | 72.2 | 614 | 19% |
| FY 2012 | 51.4 | 12.7 | 50.0 | 13.0 | 26.0 | 25.1 | 24.0 | 27.2 | 1.4 | 0.0 | 22.2 | 29.3 | 13.7 | 47.5 | 8.5 | 76.6 | 652 | 19% |
| Note: Student Health Services (CONHS) classified and unclassified staff FTE are included in Nursing. | | | | | | | | | | | | | | | | | | |
| Nursing's adjunct FTE is understated in recent years due to a switch to non-credit bearing clinical sections which are taught primarily by adjuncts. (12 CCH = 1 Adjunct FTE) | | | | | | | | | | | | | | | | | | |
| Professional Psychology | | | | | | | | | | | | | | | | | | |
| FY 2008 | 19.9 | 5.8 | 18.0 | 6.4 | 18.0 | 6.4 | 0.0 | - | 1.9 | 0.0 | 21.3 | 5.4 | 11.0 | 10.5 | 10.3 | 11.2 | 116 | 100% |
| FY 2009 | 22.0 | 4.9 | 20.0 | 5.3 | 19.0 | 5.6 | 1.0 | 106.9 | 2.0 | 0.0 | 23.5 | 4.6 | 12.0 | 8.9 | 11.5 | 9.3 | 107 | 100% |
| FY 2010 | 22.1 | 5.1 | 20.0 | 5.7 | 18.0 | 6.3 | 2.0 | 56.8 | 2.1 | 0.0 | 23.7 | 4.8 | 12.0 | 9.5 | 11.7 | 9.7 | 114 | 100% |
| FY 2011 | 21.3 | 5.2 | 20.0 | 5.5 | 18.0 | 6.1 | 2.0 | 54.7 | 1.3 | 0.0 | 22.0 | 5.0 | 12.0 | 9.1 | 10.0 | 10.9 | 109 | 100% |
| FY 2012 | 20.0 | 5.1 | 19.0 | 5.3 | 17.0 | 6.0 | 2.0 | 50.7 | 1.0 | 0.0 | 22.0 | 4.6 | 12.0 | 8.5 | 10.0 | 10.1 | 101 | 100% |
| University College (Instructional) | | | | | | | | | | | | | | | | | | |
| FY 2008 | 10.7 | 44.8 | 0.0 | - | 0.0 | - | 0.0 | - | 10.7 | 0.0 | 7.1 | 67.5 | 2.0 | 239.5 | 5.1 | 93.9 | 479 | 0% |
| FY 2009 | 12.0 | 38.4 | 0.0 | - | 0.0 | - | 0.0 | - | 12.0 | 0.0 | 6.0 | 77.8 | 1.5 | 306.4 | 4.4 | 104.2 | 463 | 0% |
| FY 2010 | 11.2 | 44.5 | 0.0 | - | 0.0 | - | 0.0 | - | 11.2 | 0.0 | 6.0 | 83.9 | 1.5 | 330.4 | 4.4 | 112.4 | 499 | 0% |
| FY 2011 | 14.0 | 40.2 | 0.0 | - | 0.0 | - | 0.0 | - | 14.0 | 0.0 | 6.2 | 91.6 | 1.5 | 373.1 | 4.6 | 121.4 | 563 | 0% |
| FY 2012 | 15.2 | 37.0 | 0.0 | - | 0.0 | - | 0.0 | - | 15.2 | 0.0 | 6.4 | 88.3 | 1.5 | 371.2 | 4.8 | 115.8 | 560 | 0% |
| Lake Campus (Instructional) | | | | | | | | | | | | | | | | | | |
| FY 2008 | 47.7 | 12.2 | 26.7 | 21.7 | 22.7 | 25.5 | 4.0 | 145.0 | 21.0 | 0.0 | 6.8 | 85.9 | 2.8 | 210.9 | 4.0 | 145.0 | 580 | 9% |
| FY 2009 | 41.0 | 16.4 | 26.7 | 25.2 | 23.7 | 28.4 | 3.0 | 224.0 | 14.3 | 0.0 | 6.8 | 99.6 | 2.8 | 244.4 | 4.0 | 168.0 | 672 | 7% |
| FY 2010 | 41.9 | 20.5 | 26.7 | 32.2 | 21.7 | 39.7 | 5.0 | 171.9 | 15.2 | 0.0 | 6.8 | 127.4 | 2.8 | 312.6 | 4.0 | 214.9 | 860 | 5% |
| FY 2011 | 49.2 | 19.5 | 26.7 | 35.9 | 21.7 | 44.1 | 5.0 | 191.3 | 22.5 | 0.0 | 6.4 | 150.4 | 2.4 | 405.3 | 4.0 | 239.1 | 957 | 3% |
| FY 2012 | 51.7 | 17.7 | 26.7 | 34.3 | 22.7 | 40.4 | 4.0 | 228.7 | 25.0 | 0.0 | 7.2 | 127.8 | 2.4 | 387.6 | 4.8 | 190.6 | 915 | 3% |

Wright State University
Ratios of Faculty/Staff FTE and Student FTE

FY2012 Update
6/20/12

| | Total Faculty FTE (c+e+g+h) | Student FTE per Total Faculty FTE | Total Full Time Faculty FTE | Student FTE per Total Full Time Faculty FTE | Tenure-line Faculty FTE | Student FTE per Tenure-line Faculty FTE | Non Tenure-line Faculty FTE | Student FTE per Non Tenure-line Faculty FTE | Adjunct FTE | Grad Teach Asst. FTE | All Staff FTE | Student FTE per All Staff FTE | Clsfd. Staff FTE | Student FTE per Clsfd. Staff FTE | Unclsfd. Staff FTE | Student FTE per Unclsfd. Staff FTE | Fall Term Total Student FTE (SCH/15) | % GR SCH |
|---|-----------------------------|-----------------------------------|-----------------------------|---|-------------------------|---|-----------------------------|---|-------------|----------------------|---------------|-------------------------------|------------------|----------------------------------|--------------------|------------------------------------|--------------------------------------|----------|
| College Staffing Data (continued) | | | | | | | | | | | | | | | | | | |
| Main Campus (excluding SoM, SoPP & University College-Instructional) | | | | | | | | | | | | | | | | | | |
| FY 2008 | 766.8 | 16.0 | 626.0 | 19.6 | 501.5 | 24.5 | 124.5 | 98.8 | 110.1 | 30.7 | 212.4 | 57.9 | 118.5 | 103.8 | 93.9 | 130.9 | 12,294 | 13% |
| FY 2009 | 801.0 | 15.8 | 629.4 | 20.2 | 506.8 | 25.0 | 122.6 | 103.5 | 129.1 | 42.6 | 211.5 | 60.0 | 118.7 | 106.9 | 92.7 | 136.9 | 12,690 | 13% |
| FY 2010 | 795.2 | 16.6 | 632.2 | 20.8 | 502.1 | 26.2 | 130.1 | 101.3 | 121.1 | 41.9 | 212.8 | 61.9 | 116.1 | 113.4 | 96.7 | 136.2 | 13,168 | 13% |
| FY 2011 | 809.8 | 16.9 | 625.2 | 21.9 | 491.0 | 27.9 | 134.1 | 102.1 | 139.8 | 44.9 | 208.1 | 65.8 | 109.0 | 125.6 | 99.1 | 138.1 | 13,690 | 12% |
| FY 2012 | 809.1 | 17.1 | 629.4 | 21.9 | 492.2 | 28.1 | 137.3 | 100.6 | 137.4 | 42.2 | 205.3 | 67.3 | 107.7 | 128.2 | 97.6 | 141.6 | 13,811 | 12% |
| Main Campus (excluding SoM) | | | | | | | | | | | | | | | | | | |
| FY 2008 | 797.4 | 16.2 | 644.0 | 20.0 | 519.5 | 24.8 | 124.5 | 103.5 | 122.7 | 30.7 | 240.8 | 53.5 | 131.5 | 98.0 | 109.3 | 117.9 | 12,889 | 14% |
| FY 2009 | 835.1 | 15.9 | 649.4 | 20.4 | 525.8 | 25.2 | 123.6 | 107.3 | 143.1 | 42.6 | 240.9 | 55.0 | 132.3 | 100.3 | 108.7 | 122.0 | 13,259 | 13% |
| FY 2010 | 828.5 | 16.6 | 652.2 | 21.1 | 520.1 | 26.5 | 132.1 | 104.4 | 134.4 | 41.9 | 242.5 | 56.8 | 129.6 | 106.3 | 112.8 | 122.2 | 13,781 | 13% |
| FY 2011 | 845.1 | 17.0 | 645.2 | 22.3 | 509.0 | 28.2 | 136.1 | 105.5 | 155.0 | 44.9 | 236.3 | 60.8 | 122.5 | 117.2 | 113.8 | 126.2 | 14,363 | 13% |
| FY 2012 | 844.2 | 17.1 | 648.4 | 22.3 | 509.2 | 28.4 | 139.3 | 103.9 | 153.6 | 42.2 | 233.6 | 61.9 | 121.2 | 119.4 | 112.4 | 128.8 | 14,473 | 12% |
| Total University (excluding SoM) | | | | | | | | | | | | | | | | | | |
| FY 2008 | 845.1 | 15.9 | 670.7 | 20.1 | 542.2 | 24.8 | 128.5 | 104.8 | 143.7 | 30.7 | 247.6 | 54.4 | 134.3 | 100.3 | 113.3 | 118.9 | 13,469 | 14% |
| FY 2009 | 876.1 | 15.9 | 676.0 | 20.6 | 549.5 | 25.4 | 126.6 | 110.1 | 157.5 | 42.6 | 247.7 | 56.3 | 135.0 | 103.2 | 112.7 | 123.7 | 13,931 | 13% |
| FY 2010 | 870.4 | 16.8 | 678.8 | 21.6 | 541.8 | 27.0 | 137.1 | 106.8 | 149.6 | 41.9 | 249.2 | 58.7 | 132.4 | 110.6 | 116.8 | 125.3 | 14,641 | 13% |
| FY 2011 | 894.2 | 17.1 | 671.8 | 22.8 | 530.7 | 28.9 | 141.1 | 108.6 | 177.5 | 44.9 | 242.7 | 63.1 | 124.9 | 122.7 | 117.8 | 130.1 | 15,319 | 12% |
| FY 2012 | 895.9 | 17.2 | 675.1 | 22.8 | 531.9 | 28.9 | 143.3 | 107.4 | 178.6 | 42.2 | 240.8 | 63.9 | 123.6 | 124.5 | 117.2 | 131.3 | 15,388 | 12% |

Wright State University
Ratios of Faculty/Staff FTE and Student FTE

FY2012 Update
6/20/12

| | Total Faculty FTE (c+e+g+h) | Student FTE per Total Faculty FTE | Total Full Time Faculty FTE | Student FTE per Total Full Time Faculty FTE | Tenure-line Faculty FTE | Student FTE per Tenure-line Faculty FTE | Non Tenure-line Faculty FTE | Student FTE per Non Tenure-line Faculty FTE | Adjunct FTE | Grad Teach Asst. FTE | All Staff FTE | Student FTE per All Staff FTE | Clsfd. Staff FTE | Student FTE per Clsfd. Staff FTE | Unclsfd. Staff FTE | Student FTE per Unclsfd. Staff FTE | Fall Term Total Student FTE (SCH/15) | % GR SCH |
|---|-----------------------------|-----------------------------------|-----------------------------|---|-------------------------|---|-----------------------------|---|-------------|----------------------|---------------|-------------------------------|------------------|----------------------------------|--------------------|------------------------------------|--------------------------------------|----------|
| Administrative Staffing Data (FY2008 - FY2012) | | | | | | | | | | | | | | | | | | |
| VP Advancement | | | | | | | | | | | | | | | | | | |
| FY 2008 | 0.0 | - | 0.0 | - | 0.0 | - | 0.0 | - | 0.0 | 0.0 | 28.8 | 447.5 | 9.2 | 1401.0 | 19.6 | 657.6 | 12,889 | 14% |
| FY 2009 | 0.0 | - | 0.0 | - | 0.0 | - | 0.0 | - | 0.0 | 0.0 | 34.7 | 382.6 | 11.0 | 1205.4 | 23.7 | 560.4 | 13,259 | 13% |
| FY 2010 | 0.0 | - | 0.0 | - | 0.0 | - | 0.0 | - | 0.0 | 0.0 | 33.2 | 415.7 | 10.0 | 1378.1 | 23.2 | 595.3 | 13,781 | 13% |
| FY 2011 | 0.0 | - | 0.0 | - | 0.0 | - | 0.0 | - | 0.0 | 0.0 | 38.4 | 374.4 | 9.4 | 1524.7 | 28.9 | 496.3 | 14,363 | 13% |
| FY 2012 | 0.0 | - | 0.0 | - | 0.0 | - | 0.0 | - | 0.0 | 0.0 | 37.7 | 384.0 | 9.5 | 1525.1 | 28.2 | 513.2 | 14,473 | 12% |
| VP Business & Fiscal Affairs | | | | | | | | | | | | | | | | | | |
| FY 2008 | 0.0 | - | 0.0 | - | 0.0 | - | 0.0 | - | 0.0 | 0.0 | 318.1 | 40.5 | 231.0 | 55.8 | 87.1 | 148.1 | 12,889 | 14% |
| FY 2009 | 0.0 | - | 0.0 | - | 0.0 | - | 0.0 | - | 0.0 | 0.0 | 317.5 | 41.8 | 228.5 | 58.0 | 89.0 | 149.0 | 13,259 | 13% |
| FY 2010 | 0.0 | - | 0.0 | - | 0.0 | - | 0.0 | - | 0.0 | 0.0 | 316.5 | 43.5 | 226.5 | 60.9 | 90.0 | 153.1 | 13,781 | 13% |
| FY 2011 | 0.0 | - | 0.0 | - | 0.0 | - | 0.0 | - | 0.0 | 0.0 | 312.5 | 46.0 | 226.0 | 63.6 | 86.5 | 166.0 | 14,363 | 13% |
| FY 2012 | 0.0 | - | 0.0 | - | 0.0 | - | 0.0 | - | 0.0 | 0.0 | 318.7 | 45.4 | 229.3 | 63.1 | 89.5 | 161.7 | 14,473 | 12% |
| VP Student Affairs | | | | | | | | | | | | | | | | | | |
| FY 2008 | 0.0 | - | 0.0 | - | 0.0 | - | 0.0 | - | 0.0 | 0.0 | 165.7 | 77.8 | 63.0 | 204.6 | 102.7 | 125.5 | 12,889 | 14% |
| FY 2009 | 0.0 | - | 0.0 | - | 0.0 | - | 0.0 | - | 0.0 | 0.0 | 166.7 | 79.5 | 63.3 | 209.5 | 103.4 | 128.2 | 13,259 | 13% |
| FY 2010 | 0.0 | - | 0.0 | - | 0.0 | - | 0.0 | - | 0.0 | 0.0 | 165.8 | 83.1 | 63.0 | 218.6 | 102.8 | 134.1 | 13,781 | 13% |
| FY 2011 | 0.0 | - | 0.0 | - | 0.0 | - | 0.0 | - | 0.0 | 0.0 | 161.8 | 88.8 | 59.8 | 240.3 | 102.0 | 140.8 | 14,363 | 13% |
| FY 2012 | 0.0 | - | 0.0 | - | 0.0 | - | 0.0 | - | 0.0 | 0.0 | 168.6 | 85.8 | 60.8 | 238.1 | 107.9 | 134.2 | 14,473 | 12% |
| Enrollment Management Division ** | | | | | | | | | | | | | | | | | | |
| FY 2008 | 0.0 | - | 0.0 | - | 0.0 | - | 0.0 | - | 0.0 | 0.0 | 64.8 | 198.9 | 32.8 | 393.0 | 32.0 | 402.8 | 12,889 | 14% |
| FY 2009 | 0.0 | - | 0.0 | - | 0.0 | - | 0.0 | - | 0.0 | 0.0 | 67.8 | 195.6 | 31.8 | 417.0 | 36.0 | 368.3 | 13,259 | 13% |
| FY 2010 | 0.0 | - | 0.0 | - | 0.0 | - | 0.0 | - | 0.0 | 0.0 | 68.8 | 200.3 | 31.8 | 433.4 | 37.0 | 372.5 | 13,781 | 13% |
| FY 2011 | 0.5 | 28725.1 | 0.5 | 28725.1 | 0.5 | - | 0.0 | - | 0.0 | 0.0 | 76.0 | 189.0 | 32.0 | 448.8 | 44.0 | 326.4 | 14,363 | 13% |
| FY 2012 | 0.5 | 28945.8 | 0.5 | 28945.8 | 0.0 | - | 0.5 | - | 0.0 | 0.0 | 76.0 | 190.4 | 32.0 | 452.3 | 44.0 | 328.9 | 14,473 | 12% |
| President | | | | | | | | | | | | | | | | | | |
| FY 2008 | 2.0 | 6444.5 | 2.0 | 6444.5 | 2.0 | 6444.5 | 0.0 | - | 0.0 | 0.0 | 10.7 | 1204.6 | 8.5 | 1516.3 | 2.2 | 5858.6 | 12,889 | 14% |
| FY 2009 | 2.0 | 6629.6 | 2.0 | 6629.6 | 1.0 | 13259.3 | 1.0 | 13259.3 | 0.0 | 0.0 | 9.7 | 1365.5 | 7.5 | 1765.5 | 2.2 | 6026.9 | 13,259 | 13% |
| FY 2010 | 2.0 | 6890.5 | 2.0 | 6890.5 | 1.0 | 13781.0 | 1.0 | 13781.0 | 0.0 | 0.0 | 10.2 | 1351.1 | 8.0 | 1722.6 | 2.2 | 6264.1 | 13,781 | 13% |
| FY 2011 | 2.0 | 7181.3 | 2.0 | 7181.3 | 1.0 | 14362.5 | 1.0 | 14362.5 | 0.0 | 0.0 | 17.7 | 811.0 | 8.5 | 1687.7 | 9.2 | 1561.1 | 14,363 | 13% |
| FY 2012 | 2.5 | 5766.1 | 2.5 | 5766.1 | 1.5 | 9584.7 | 1.0 | 14472.9 | 0.0 | 0.0 | 17.5 | 826.6 | 6.5 | 2223.2 | 11.0 | 1315.7 | 14,473 | 12% |
| Library | | | | | | | | | | | | | | | | | | |
| FY 2008 | 0.0 | - | 0.0 | - | 0.0 | - | 0.0 | - | 0.0 | 0.0 | 72.2 | 178.5 | 31.1 | 414.4 | 41.1 | 313.6 | 12,889 | 14% |
| FY 2009 | 0.0 | - | 0.0 | - | 0.0 | - | 0.0 | - | 0.0 | 0.0 | 70.7 | 187.6 | 29.6 | 447.5 | 41.1 | 323.0 | 13,259 | 13% |
| FY 2010 | 0.0 | - | 0.0 | - | 0.0 | - | 0.0 | - | 0.0 | 0.0 | 70.7 | 195.0 | 29.6 | 465.1 | 41.1 | 335.7 | 13,781 | 13% |
| FY 2011 | 0.0 | - | 0.0 | - | 0.0 | - | 0.0 | - | 0.0 | 0.0 | 68.8 | 208.8 | 27.6 | 519.8 | 41.2 | 348.9 | 14,363 | 13% |
| FY 2012 | 0.0 | - | 0.0 | - | 0.0 | - | 0.0 | - | 0.0 | 0.0 | 71.8 | 201.6 | 28.6 | 505.5 | 43.2 | 335.3 | 14,473 | 12% |

** In FY 2008 the Enrollment Management Division was created from Orgn's that were in the VP Student Affairs & Enrollment Services (41.8 FTE) and the VP Curriculum & Instruction (22 FTE) category in FY 2007.

Wright State University
Ratios of Faculty/Staff FTE and Student FTE

FY2012 Update
6/20/12

| | Total Faculty FTE (c+e+g+h) | Student FTE per Total Faculty FTE | Total Full Time Faculty FTE | Student FTE per Total Full Time Faculty FTE | Tenure-line Faculty FTE | Student FTE per Tenure-line Faculty FTE | Non Tenure-line Faculty FTE | Student FTE per Non Tenure-line Faculty FTE | Adjunct FTE | Grad Teach Asst. FTE | All Staff FTE | Student FTE per All Staff FTE | Clsfd. Staff FTE | Student FTE per Clsfd. Staff FTE | Unclsfd. Staff FTE | Student FTE per Unclsfd. Staff FTE | Fall Term Total Student FTE (SCH/15) | % GR SCH |
|--|-----------------------------|-----------------------------------|-----------------------------|---|-------------------------|---|-----------------------------|---|-------------|----------------------|---------------|-------------------------------|------------------|----------------------------------|--------------------|------------------------------------|--------------------------------------|----------|
| Administrative Staffing Data (continued) | | | | | | | | | | | | | | | | | | |
| Research & Graduate Studies | | | | | | | | | | | | | | | | | | |
| FY 2008 | 1.0 | 12888.9 | 1.0 | 12888.9 | 1.0 | 12888.9 | 0.0 | - | 0.0 | 0.0 | 30.0 | 429.6 | 10.0 | 1288.9 | 20.0 | 644.4 | 12,889 | 14% |
| FY 2009 | 2.1 | 6254.4 | 2.1 | 6254.4 | 1.1 | 11838.6 | 1.0 | 13259.3 | 0.0 | 0.0 | 34.0 | 390.0 | 10.0 | 1325.9 | 24.0 | 552.5 | 13,259 | 13% |
| FY 2010 | 2.1 | 6625.5 | 2.1 | 6625.5 | 1.1 | 12760.2 | 1.0 | 13781.0 | 0.0 | 0.0 | 32.8 | 420.8 | 9.0 | 1531.2 | 23.8 | 580.3 | 13,781 | 13% |
| FY 2011 | 2.1 | 6905.1 | 2.1 | 6905.1 | 1.1 | 13298.6 | 1.0 | 14362.5 | 0.0 | 0.0 | 31.8 | 452.4 | 9.0 | 1595.8 | 22.8 | 631.3 | 14,363 | 13% |
| FY 2012 | 2.1 | 6958.1 | 2.1 | 6958.1 | 1.1 | 13400.8 | 1.0 | 14472.9 | 0.0 | 0.0 | 33.8 | 428.8 | 10.0 | 1447.3 | 23.8 | 609.4 | 14,473 | 12% |
| University College (Non-Instructional) | | | | | | | | | | | | | | | | | | |
| FY 2008 | 1.0 | 12888.9 | 1.0 | 12888.9 | 1.0 | 12888.9 | 0.0 | - | 0.0 | 0.0 | 24.6 | 523.9 | 6.8 | 1895.4 | 17.8 | 724.1 | 12,889 | 14% |
| FY 2009 | 1.0 | 13259.3 | 1.0 | 13259.3 | 1.0 | 13259.3 | 0.0 | - | 0.0 | 0.0 | 24.9 | 532.1 | 5.8 | 2302.0 | 19.2 | 692.0 | 13,259 | 13% |
| FY 2010 | 1.0 | 13781.0 | 1.0 | 13781.0 | 1.0 | 13781.0 | 0.0 | - | 0.0 | 0.0 | 24.9 | 553.0 | 5.8 | 2392.5 | 19.2 | 719.3 | 13,781 | 13% |
| FY 2011 | 1.0 | 14362.5 | 1.0 | 14362.5 | 1.0 | 14362.5 | 0.0 | - | 0.0 | 0.0 | 23.1 | 623.1 | 5.3 | 2730.5 | 17.8 | 807.3 | 14,363 | 13% |
| FY 2012 | 1.0 | 14472.9 | 1.0 | 14472.9 | 1.0 | 14472.9 | 0.0 | - | 0.0 | 0.0 | 22.9 | 633.4 | 5.3 | 2751.5 | 17.6 | 822.8 | 14,473 | 12% |
| VP Curriculum & Instruction (less University College) | | | | | | | | | | | | | | | | | | |
| FY 2008 | 7.1 | 1815.3 | 6.8 | 1895.4 | 5.8 | 2222.2 | 1.0 | 12888.9 | 0.3 | 0.0 | 71.7 | 179.8 | 31.3 | 411.8 | 40.4 | 319.0 | 12,889 | 14% |
| FY 2009 | 7.4 | 1787.0 | 6.8 | 1964.3 | 2.8 | 4821.6 | 4.0 | 3314.8 | 0.7 | 0.0 | 74.7 | 177.5 | 32.3 | 410.9 | 42.4 | 312.5 | 13,259 | 13% |
| FY 2010 | 7.5 | 1849.8 | 6.8 | 2041.6 | 2.8 | 5011.3 | 4.0 | 3445.3 | 0.7 | 0.0 | 73.7 | 187.0 | 32.3 | 427.1 | 41.4 | 332.6 | 13,781 | 13% |
| FY 2011 | 7.4 | 1935.7 | 6.8 | 2127.8 | 3.8 | 3830.0 | 3.0 | 4787.5 | 0.7 | 0.0 | 51.8 | 277.1 | 21.3 | 675.2 | 30.6 | 470.0 | 14,363 | 13% |
| FY 2012 | 6.8 | 2144.1 | 6.8 | 2144.1 | 3.8 | 3859.4 | 3.0 | 4824.3 | 0.0 | 0.0 | 47.8 | 302.6 | 18.3 | 792.2 | 29.6 | 489.6 | 14,473 | 12% |
| CaTS | | | | | | | | | | | | | | | | | | |
| FY 2008 | 0.0 | - | 0.0 | - | 0.0 | - | 0.0 | - | 0.0 | 0.0 | 97.0 | 132.9 | 38.0 | 339.2 | 59.0 | 218.5 | 12,889 | 14% |
| FY 2009 | 0.0 | - | 0.0 | - | 0.0 | - | 0.0 | - | 0.0 | 0.0 | 101.0 | 131.3 | 40.0 | 331.5 | 61.0 | 217.4 | 13,259 | 13% |
| FY 2010 | 0.0 | - | 0.0 | - | 0.0 | - | 0.0 | - | 0.0 | 0.0 | 101.0 | 136.4 | 39.0 | 353.4 | 62.0 | 222.3 | 13,781 | 13% |
| FY 2011 | 0.0 | - | 0.0 | - | 0.0 | - | 0.0 | - | 0.0 | 0.0 | 105.0 | 136.8 | 36.0 | 399.0 | 69.0 | 208.2 | 14,363 | 13% |
| FY 2012 | 0.0 | - | 0.0 | - | 0.0 | - | 0.0 | - | 0.0 | 0.0 | 111.0 | 130.4 | 40.0 | 361.8 | 71.0 | 203.8 | 14,473 | 12% |
| Provost (Less CaTS, VP Curriculum & Univ. College) | | | | | | | | | | | | | | | | | | |
| FY 2008 | 2.0 | 6444.5 | 2.0 | 6444.5 | 2.0 | 6444.5 | 0.0 | - | 0.0 | 0.0 | 63.7 | 202.3 | 19.9 | 647.7 | 43.8 | 294.3 | 12,889 | 14% |
| FY 2009 | 2.0 | 6629.6 | 2.0 | 6629.6 | 2.0 | 6629.6 | 0.0 | - | 0.0 | 0.0 | 64.8 | 204.6 | 21.5 | 617.3 | 43.3 | 306.1 | 13,259 | 13% |
| FY 2010 | 2.5 | 5512.4 | 2.5 | 5512.4 | 2.5 | 5512.4 | 0.0 | - | 0.0 | 0.0 | 63.3 | 217.8 | 21.5 | 641.6 | 41.8 | 329.7 | 13,781 | 13% |
| FY 2011 | 2.5 | 5745.0 | 2.5 | 5745.0 | 2.5 | 5745.0 | 0.0 | - | 0.0 | 0.0 | 63.4 | 226.5 | 18.7 | 766.8 | 44.7 | 321.5 | 14,363 | 13% |
| FY 2012 | 2.5 | 5789.2 | 2.5 | 5789.2 | 2.5 | 5789.2 | 0.0 | - | 0.0 | 0.0 | 70.3 | 206.0 | 17.6 | 823.3 | 52.7 | 274.7 | 14,473 | 12% |
| Lake Campus (Non-Instructional) | | | | | | | | | | | | | | | | | | |
| FY 2008 | 0.0 | - | 0.0 | - | 0.0 | - | 0.0 | - | 0.0 | 0.0 | 17.9 | 32.4 | 6.8 | 85.3 | 11.1 | 52.2 | 580 | 9% |
| FY 2009 | 0.0 | - | 0.0 | - | 0.0 | - | 0.0 | - | 0.0 | 0.0 | 18.8 | 35.8 | 6.8 | 99.6 | 12.1 | 55.8 | 672 | 7% |
| FY 2010 | 0.0 | - | 0.0 | - | 0.0 | - | 0.0 | - | 0.0 | 0.0 | 18.9 | 45.5 | 6.8 | 127.4 | 12.2 | 70.8 | 860 | 5% |
| FY 2011 | 0.0 | - | 0.0 | - | 0.0 | - | 0.0 | - | 0.0 | 0.0 | 18.9 | 50.6 | 8.0 | 120.3 | 11.0 | 87.4 | 957 | 3% |
| FY 2012 | 0.0 | - | 0.0 | - | 0.0 | - | 0.0 | - | 0.0 | 0.0 | 17.2 | 53.2 | 9.3 | 98.8 | 8.0 | 115.1 | 915 | 3% |

Wright State University
Ratios of Faculty/Staff FTE and Student FTE

FY2012 Update
6/20/12

| | Total Faculty FTE (c+e+g+h) | Student FTE per Total Faculty FTE | Total Full Time Faculty FTE | Student FTE per Total Full Time Faculty FTE | Tenure-line Faculty FTE | Student FTE per Tenure-line Faculty FTE | Non Tenure-line Faculty FTE | Student FTE per Non Tenure-line Faculty FTE | Adjunct FTE | Grad Teach Asst. FTE | All Staff FTE | Student FTE per All Staff FTE | Clsfd. Staff FTE | Student FTE per Clsfd. Staff FTE | Unclsfd. Staff FTE | Student FTE per Unclsfd. Staff FTE | Fall Term Total Student FTE (SCH/15) | % GR SCH |
|---|------------------------------------|-----------------------------------|------------------------------------|---|--------------------------------|---|------------------------------------|---|--------------------|-----------------------------|----------------------|-------------------------------|-------------------------|----------------------------------|---------------------------|------------------------------------|--------------------------------------|----------|
| Total Administrative | | | | | | | | | | | | | | | | | | |
| FY 2008 | 13.1 | 983.9 | 12.8 | 1006.9 | 11.8 | 1092.3 | 1.0 | 12888.9 | 0.3 | 0.0 | 965.2 | 13.4 | 488.4 | 26.4 | 476.8 | 27.0 | 12,889 | 14% |
| FY 2009 | 14.5 | 911.9 | 13.9 | 956.0 | 7.9 | 1684.8 | 6.0 | 2209.9 | 0.7 | 0.0 | 985.2 | 13.5 | 487.9 | 27.2 | 497.3 | 26.7 | 13,259 | 13% |
| FY 2010 | 15.0 | 916.9 | 14.3 | 961.7 | 8.3 | 1654.4 | 6.0 | 2296.8 | 0.7 | 0.0 | 979.6 | 14.1 | 483.2 | 28.5 | 496.5 | 27.8 | 13,781 | 13% |
| FY 2011 | 15.5 | 926.6 | 14.8 | 968.5 | 9.8 | 1461.1 | 5.0 | 2872.5 | 0.7 | 0.0 | 969.1 | 14.8 | 461.6 | 31.1 | 507.6 | 28.3 | 14,363 | 13% |
| FY 2012 | 15.3 | 943.5 | 15.3 | 943.5 | 9.8 | 1470.8 | 5.5 | 2631.4 | 0.0 | 0.0 | 993.3 | 14.6 | 467.0 | 31.0 | 526.2 | 27.5 | 14,473 | 12% |
| Total Administrative and Total Main Campus Colleges (excluding SoM, SoPP & University College-Instructional) | | | | | | | | | | | | | | | | | | |
| FY 2008 | 779.9 | 15.8 | 638.8 | 19.2 | 513.3 | 24.0 | 125.5 | 98.0 | 110.4 | 30.7 | 1177.6 | 10.4 | 606.9 | 20.3 | 570.7 | 21.5 | 12,294 | 13% |
| FY 2009 | 815.6 | 15.6 | 643.2 | 19.7 | 514.7 | 24.7 | 128.6 | 98.7 | 129.8 | 42.6 | 1196.7 | 10.6 | 606.7 | 20.9 | 590.0 | 21.5 | 12,690 | 13% |
| FY 2010 | 810.2 | 16.3 | 646.5 | 20.4 | 510.5 | 25.8 | 136.1 | 96.8 | 121.8 | 41.9 | 1192.5 | 11.0 | 599.3 | 22.0 | 593.2 | 22.2 | 13,168 | 13% |
| FY 2011 | 825.3 | 16.6 | 640.0 | 21.4 | 500.9 | 27.3 | 139.1 | 98.4 | 140.5 | 44.9 | 1177.2 | 11.6 | 570.6 | 24.0 | 606.7 | 22.6 | 13,690 | 12% |
| FY 2012 | 824.4 | 16.8 | 644.8 | 21.4 | 502.0 | 27.5 | 142.8 | 96.7 | 137.4 | 42.2 | 1198.6 | 11.5 | 574.8 | 24.0 | 623.8 | 22.1 | 13,811 | 12% |
| Total Administrative and Total Main Campus Colleges (excluding SoM) | | | | | | | | | | | | | | | | | | |
| FY 2008 | 810.5 | 15.9 | 656.8 | 19.6 | 531.3 | 24.3 | 125.5 | 102.7 | 123.0 | 30.7 | 1206.0 | 10.7 | 619.9 | 20.8 | 586.1 | 22.0 | 12,889 | 14% |
| FY 2009 | 849.6 | 15.6 | 663.2 | 20.0 | 533.7 | 24.8 | 129.6 | 102.3 | 143.8 | 42.6 | 1226.1 | 10.8 | 620.2 | 21.4 | 605.9 | 21.9 | 13,259 | 13% |
| FY 2010 | 843.5 | 16.3 | 666.5 | 20.7 | 528.5 | 26.1 | 138.1 | 99.8 | 135.1 | 41.9 | 1222.1 | 11.3 | 612.8 | 22.5 | 609.3 | 22.6 | 13,781 | 13% |
| FY 2011 | 860.6 | 16.7 | 660.0 | 21.8 | 518.9 | 27.7 | 141.1 | 101.8 | 155.7 | 44.9 | 1205.4 | 11.9 | 584.1 | 24.6 | 621.3 | 23.1 | 14,363 | 13% |
| FY 2012 | 859.6 | 16.8 | 663.8 | 21.8 | 519.0 | 27.9 | 144.8 | 100.0 | 153.6 | 42.2 | 1226.9 | 11.8 | 588.3 | 24.6 | 638.6 | 22.7 | 14,473 | 12% |
| Total Administrative and Total University Colleges (excluding SoM) | | | | | | | | | | | | | | | | | | |
| FY 2008 | 858.2 | 15.7 | 683.5 | 19.7 | 554.0 | 24.3 | 129.5 | 104.0 | 144.0 | 30.7 | 1212.7 | 11.1 | 622.7 | 21.6 | 590.1 | 22.8 | 13,469 | 14% |
| FY 2009 | 890.6 | 15.6 | 689.9 | 20.2 | 557.4 | 25.0 | 132.6 | 105.1 | 158.1 | 42.6 | 1232.9 | 11.3 | 622.9 | 22.4 | 609.9 | 22.8 | 13,931 | 13% |
| FY 2010 | 885.4 | 16.5 | 693.2 | 21.1 | 550.1 | 26.6 | 143.1 | 102.3 | 150.3 | 41.9 | 1228.9 | 11.9 | 615.6 | 23.8 | 613.3 | 23.9 | 14,641 | 13% |
| FY 2011 | 909.7 | 16.8 | 686.7 | 22.3 | 540.5 | 28.3 | 146.1 | 104.8 | 178.2 | 44.9 | 1211.8 | 12.6 | 586.4 | 26.1 | 625.3 | 24.5 | 15,319 | 12% |
| FY 2012 | 911.3 | 16.9 | 690.4 | 22.3 | 541.7 | 28.4 | 148.8 | 103.4 | 178.6 | 42.2 | 1234.1 | 12.5 | 590.6 | 26.1 | 643.4 | 23.9 | 15,388 | 12% |

Data sources for Academic Faculty FTE:

Tenure-line Faculty, Full-Time Non Tenure-line Faculty, Classified Staff, and Unclassified Staff FTE are budgeted FTE (unrestricted base budget).

Adjunct FTE is calculated using the SSN's of Adjuncts from HR and merged with HEI files for Course Credit Hours (CCH) taught. 12 CCH equals 1 FTE.

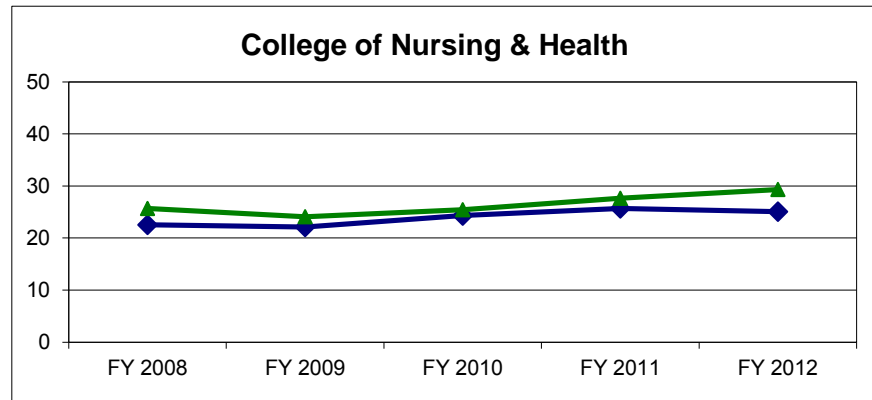
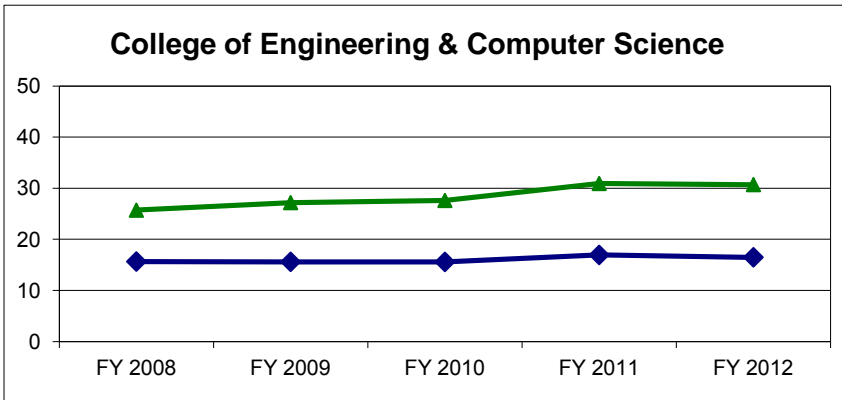
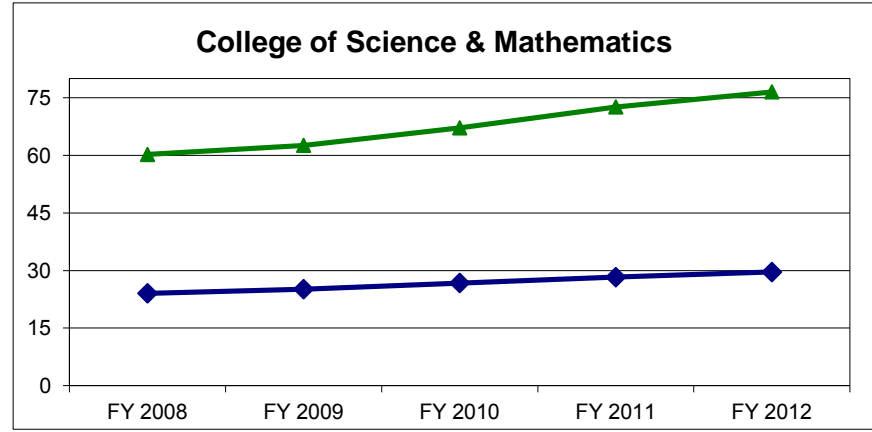
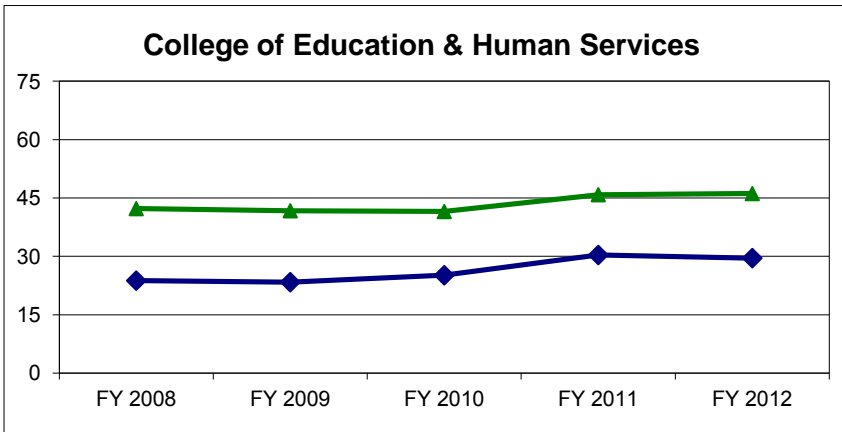
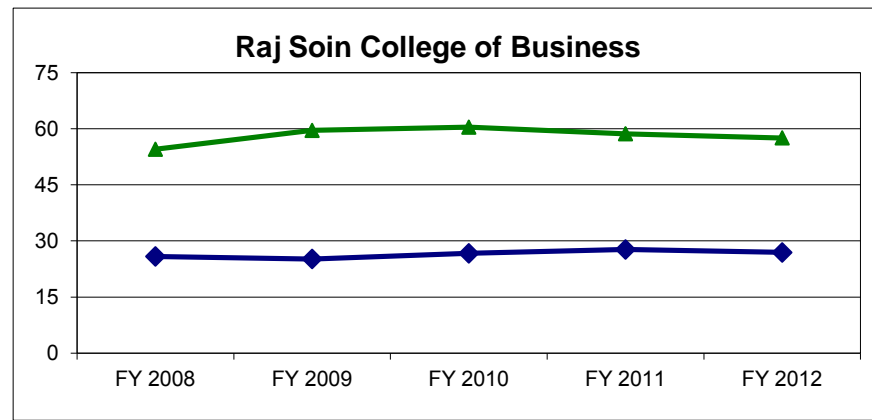
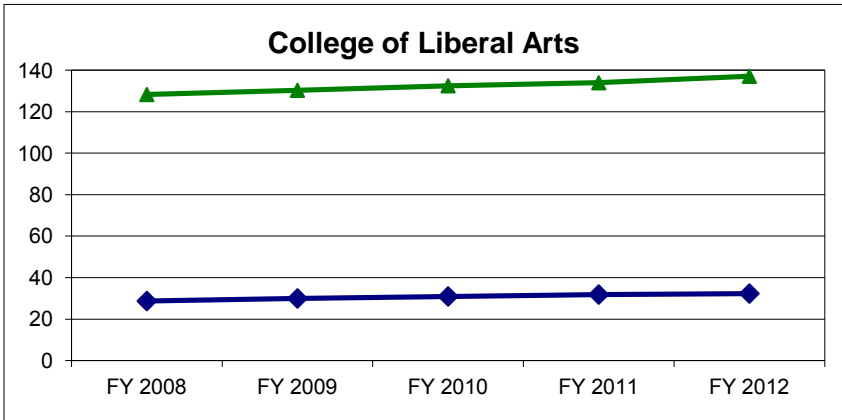
Teaching Assistant FTE is based on HEI files. Each Graduate Teaching Assistant equals .33 FTE.

All Faculty and Staff FTE are listed according to where the FTE was expensed. Vacancies are included in the FTE count.

1. Comparison of student FTE per various faculty/staff categories by college (FY 2008 – FY 2012)
 - Graphical representation of student **FTE** per faculty/staff by college
 - Graphical representation of student **FTE** per faculty/staff by employee type

Wright State University
 Comparison of Student FTE per Faculty/Staff by College

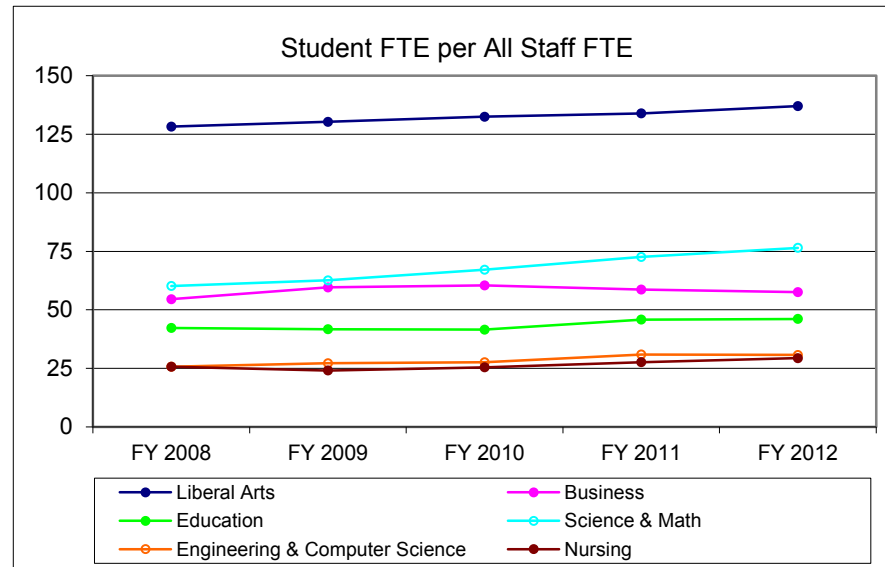
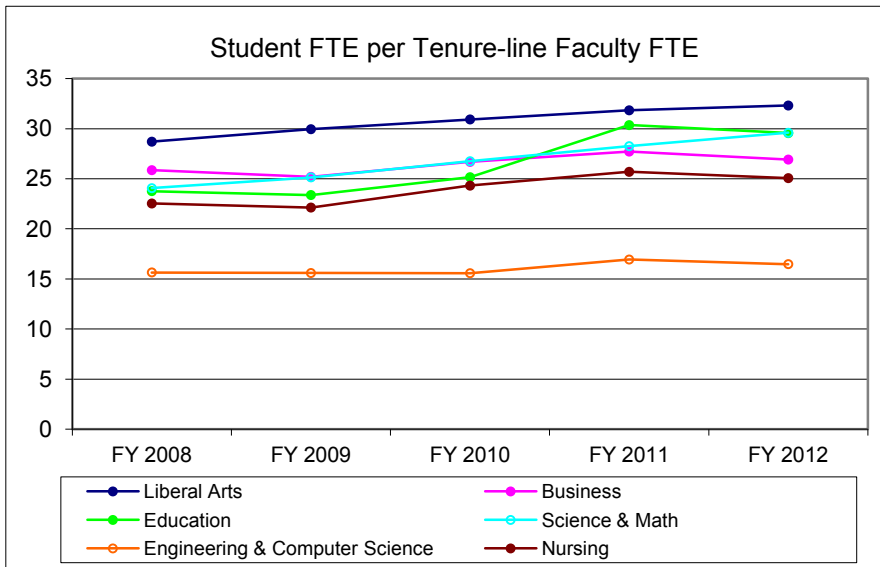
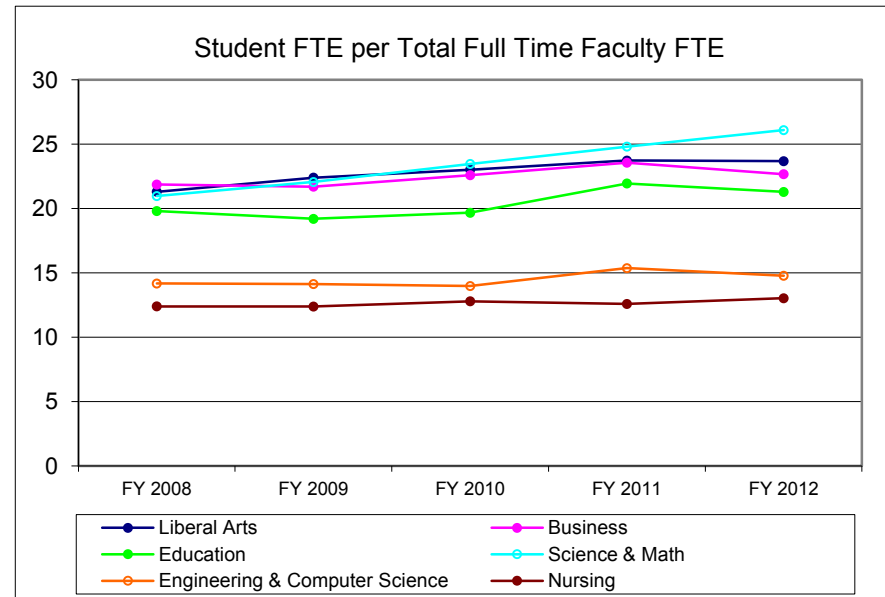
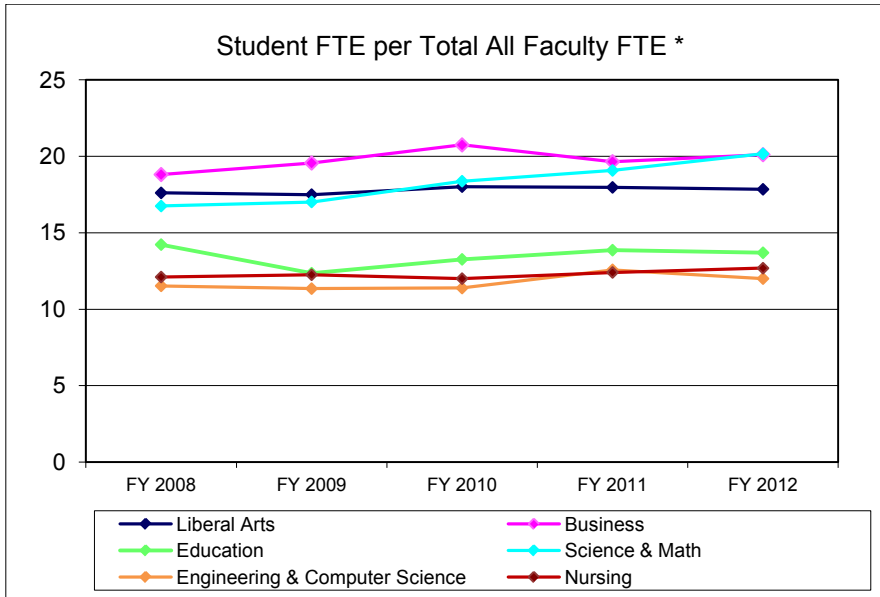
FY2012 Update
 6/20/12



▲ Students FTE's per Classified & Unclassified Staff FTE
 ◆ Student FTE's per Tenure-line Faculty FTE

Wright State University
Comparison of Student FTE per Faculty/Staff

FY2012 Update
 6/20/12



* Total All Faculty FTE includes Tenure-line, Non Tenure-line, Adjuncts (12 CCH = 1 FTE), and Graduate Teaching Assistants (1 Headcount = .33 FTE).

1. FY 2012 faculty/staff ratios sorted by college and rank
 - Student **FTE** per various faculty/staff categories

WSU Staffing Analysis
FY2012 Student FTE per Faculty/Staff Ratios

FY2012 Update
6/20/12

Sorted by College:

| | (A) Student FTE per All Faculty* | (B) Student FTE per Total Full Time Faculty FTE | (C) Student FTE per Tenure-line Faculty FTE | (D) Student FTE per All Staff FTE (E+F) | (E) Student FTE per Clsfd. Staff FTE | (F) Student FTE per Unclsfd.Staff FTE | (G) Student FTE per All Faculty* & All Staff | (H) All Faculty FTE per All Staff FTE |
|--------------|---|---|--|---|---|---|---|--|
| Liberal Arts | 17.8 | 23.7 | 32.3 | 137.1 | 226.5 | 347.2 | 15.8 | 7.7 |
| Business | 20.1 | 22.7 | 26.9 | 57.6 | 90.4 | 158.3 | 14.9 | 2.9 |
| Education | 13.7 | 21.3 | 29.6 | 46.1 | 92.3 | 92.3 | 10.6 | 3.4 |
| Sci&Math | 20.2 | 26.1 | 29.6 | 76.5 | 161.3 | 145.5 | 16.0 | 3.8 |
| Engineering | 12.0 | 14.8 | 16.5 | 30.7 | 78.0 | 50.6 | 8.6 | 2.6 |
| Nursing | 12.7 | 13.0 | 25.1 | 29.3 | 47.5 | 76.6 | 8.9 | 2.3 |
| Lake Campus | 17.7 | 34.3 | 40.4 | 127.8 | 387.6 | 190.6 | 15.5 | 7.2 |

Sorted by Rank:

| | (A) Student FTE per All Faculty* | (B) Student FTE per Total Full Time Faculty FTE | (C) Student FTE per Tenure-line Faculty FTE | (D) Student FTE per All Staff FTE (E+F) | (E) Student FTE per Clsfd. Staff FTE | (F) Student FTE per Unclsfd.Staff FTE | (G) Student FTE per All Faculty* & All Staff | (H) All Faculty FTE per All Staff FTE |
|--|---|---|--|---|---|---|---|--|
| | 20.2 | 34.3 | 40.4 | 137.1 | 387.6 | 347.2 | 16.0 | 7.7 |
| | 20.1 | 26.1 | 32.3 | 127.8 | 226.5 | 190.6 | 15.8 | 7.2 |
| | 17.8 | 23.7 | 29.6 | 76.5 | 161.3 | 158.3 | 15.5 | 3.8 |
| | 17.7 | 22.7 | 29.6 | 57.6 | 92.3 | 145.5 | 14.9 | 3.4 |
| | 13.7 | 21.3 | 26.9 | 46.1 | 90.4 | 92.3 | 10.6 | 2.9 |
| | 12.0 | 14.8 | 25.1 | 30.7 | 78.0 | 76.6 | 8.9 | 2.6 |
| | 12.7 | 13.0 | 16.5 | 29.3 | 47.5 | 50.6 | 8.6 | 2.3 |

Liberal Arts
 Education
 Business
 Sci&Math
 Engineering
 Lake Campus
 Nursing

* All Faculty FTE includes Tenure-line, Non Tenure-line, Adjuncts (12 CCH = 1 FTE), and Teaching Assistants (1 Headcount = .33 FTE).

1. Wright State University Main Campus as compared to the median for the 13 state supported University Main Campuses
 - Student credit hours taught to undergraduates by faculty appointment status (Fall 2006 – Fall 2010)
 - Ratio of faculty headcount to student FTE/headcount ratio for tenure-line and all full-time faculty (FY2007 to FY2011).

Wright State University Main Campus as Compared to the Median for the 13 State Supported University Main Campuses

Percent of All Undergraduate Student Credit Hours Taught by Faculty Appointment Status

| | | Fall 2006 | | Fall 2007 | | Fall 2008 | | Fall 2009 | | Fall 2010 | |
|---|-----|--------------------|---|-----------|-------------------------------|-----------|-------------------------------|-----------|-------------------------------|-----------|-------------------------------|
| | | WSU | Percentage Points from Median | WSU | Percentage Points from Median | WSU | Percentage Points from Median | WSU | Percentage Points from Median | WSU | Percentage Points from Median |
| | | Appointment Status | Percent SCH Taught by Full-time Faculty | 73% | +9 | 70% | +3 | 70% | +5 | 69% | +3 |
| Percent SCH Taught by Part-time Faculty | 23% | | 0 | 25% | 0 | 24% | -1 | 25% | 0 | 29% | +2 |
| Percent SCH taught by GA | 4% | | -2 | 5% | -1 | 6% | 0 | 6% | 0 | 5% | 0 |

Average Class Section Size - All Students

| | | FY 2007 | | FY 2008 | | FY 2009 | | FY 2010 | | FY 2011 | |
|--------------|-------------------------|---------|----------------------|---------|----------------------|---------|----------------------|---------|----------------------|---------|----------------------|
| | | WSU | Variance from Median | WSU | Variance from Median | WSU | Variance from Median | WSU | Variance from Median | WSU | Variance from Median |
| All Students | Avg. Class Section Size | 15 | 0 | 15 | 0 | 15 | -1 | 16 | 0 | 16 | 0 |

Percentage of First Year Students Taking Any Course Section Taught by Tenured or Tenure Track Faculty

FY 2010 WSU - Main Campus 89% Percentage Points from the Median: -2%

Wright State University

Ohio Main Campuses
Faculty Comparative Data
FY2010-11

FY2012 Update
6/20/12

Full, Associate, & Assistant Professors

| | Full, Associate, & Assistant Professor Headcount | All Terms Student FTE | | Fall Term Student Headcount | |
|-------------------------|---|-----------------------|-------------------|-----------------------------|-------------|
| | | # | Ratio** (SORT) | # | Ratio** |
| Cincinnati | 1,188 | 27,115 | 22.8 | 32,617 | 27.5 |
| Ohio State | 2,208 | 57,149 | 25.9 | 57,360 | 26.0 |
| Miami | 659 | 17,089 | 25.9 | 18,243 | 27.7 |
| Cleveland State | 483 | 13,710 | 28.4 | 17,386 | 36.0 |
| Youngstown State | 421 | 12,557 | 29.8 | 15,100 | 35.9 |
| Bowling Green | 520 | 16,424 | 31.6 | 17,666 | 34.0 |
| Wright State | 481 | 15,738 | 32.7 | 18,354 | 38.2 |
| Akron | 665 | 22,830 | 34.3 | 27,718 | 41.7 |
| Ohio University | 725 | 25,094 | 34.6 | 25,083 | 34.6 |
| Toledo | 599 | 20,874 | 34.8 | 23,144 | 38.6 |
| Kent State | 675 | 23,590 | 34.9 | 26,841 | 39.8 |
| Shawnee State | 115 | 4,232 | 36.8 | 4,554 | 39.6 |
| Weighted Average | | 29.3 | | 32.5 | |

All Full-Time Faculty

| | Full-Time Faculty Headcount | All Terms Student FTE | | Fall Term Student Headcount | |
|-------------------------|--------------------------------|-----------------------|-------------------|-----------------------------|-------------|
| | | # | Ratio** (SORT) | # | Ratio** |
| Bowling Green | 797 | 16,424 | 20.6 | 17,666 | 22.2 |
| Miami | 784 | 17,089 | 21.8 | 18,243 | 23.3 |
| Cincinnati | 1,224 | 27,115 | 22.2 | 32,617 | 26.6 |
| Toledo | 830 | 20,874 | 25.1 | 23,144 | 27.9 |
| Wright State | 618 | 15,738 | 25.5 | 18,354 | 29.7 |
| Ohio State | 2,212 | 57,149 | 25.8 | 57,360 | 25.9 |
| Kent State | 912 | 23,590 | 25.9 | 26,841 | 29.4 |
| Cleveland State | 499 | 13,710 | 27.5 | 17,386 | 34.8 |
| Youngstown State | 455 | 12,557 | 27.6 | 15,100 | 33.2 |
| Shawnee State | 149 | 4,232 | 28.4 | 4,554 | 30.6 |
| Akron | 777 | 22,830 | 29.4 | 27,718 | 35.7 |
| Ohio University | 725 | 25,094 | 34.6 | 25,083 | 34.6 |
| Weighted Average | | 25.7 | | 28.5 | |

Central State does not report data to Ohio Universities Faculty Salary Survey therefore not included in this report.

** Ratios are calculated using all student data divided by Full-time faculty only (tenure line & all faculty), although some coursework is taught by adjuncts, teaching assistants, etc.

Source:

Student headcount: OBR Statistical Profile

Student FTE: OBR Resource Analysis

Faculty: Ohio Universities Faculty Salary Survey data, 2010-11

Appendix A: Staffing Analysis Definitions

University Student/Faculty/Staff Populations

Student Headcount and FTE: Includes School of Medicine and Lake Campus. Source: Prior to Fall 2006 - SIS 232 (14th day). As of Fall 2006 Banner Enrollment Reports.

Full-Time Faculty, Unclassified Staff, Classified Staff: Includes School of Medicine. Prior to FY2007 budgeted FTE as of July 1st from RAPS. As of FY2007 Banner - HR.

AAUP Tenure Line: Headcount of Tenured and Tenure-track faculty from instructional accounts only. Excludes Dean's offices, SoM, and SoPP. Actual, not budgeted, numbers. Source: AAUP Faculty Salary Survey.

Budgeted Salary Expenditures as % of Total Gross Budget

Budgeted Faculty and Staff: Prior to 2006-07 budgeted FTE as of July 1st from RAPS. As of 2006-07 Banner - Finance. Total University excluding SoM, then SoM listed separately.

Ratios of Faculty/Staff FTE and Student FTE (School of Medicine not included)

Full-Time Faculty, Tenure-line Faculty, Non Tenure-line Faculty, Classified Staff and Unclassified Staff: Budgeted FTE as of July 1st. Dean's Offices are included within each college in the Fall Quarter Instructional Staffing Data.

Full-Time Faculty: Sum of Tenure-line and Non Tenure-line faculty.

Tenure-line Faculty: All Professors, Associate Professors, and Assistant Professors. Includes SoPP which does not actually grant tenure.

Non Tenure-line Faculty: All Instructors and Lectures.

Adjunct: Calculated using the SSN's of Adjuncts from HR and merged with HEI files for Course Credit Hours (CCH) taught. 12 CCH = 1 FTE.

Teaching Assistants: FTE is based on HEI files. Each unduplicated SSN equals .33 FTE.

Graphs and Charts: Comparison of Student FTE per Faculty/Staff FTE

All data is linked to Ratios of Faculty/Staff FTE and Student FTE. (see above)

Wright State University Main Campus as Compared to the Median for the 13 State Supported University Main Campuses

Source: OBR Performance Report (HEI data)

Ohio Main Campuses - Faculty Comparative Data

Student FTE and Headcount: Includes School of Medicine. Source: OBR Student Inventory Data (HEI data).

Faculty Headcount: Does not include School of Medicine. Faculty in instructional accounts only. Actual, not budgeted, numbers. Source: Ohio Universities Faculty Salary Survey.

Full, Associate & Assistant Professor Headcount: Does not include faculty in Dean's offices or other non-instructional accounts.

Full-Time Faculty Headcount: Includes Full/Associate/Assistant Professors, Instructors and Lectures.

Appendix B: Faculty Staffing Guidelines

TENURE LINE FACULTY

Full-time core faculty with terminal degrees who teach at the 300 level or above for more than half their teaching assignments, pursue active research agendas, and perform service that engages internal and external constituencies.

INSTRUCTORS, LECTURERS and VISITING FACULTY

Full-time faculty with advanced (but not necessarily terminal) degrees who--

- ♦ teach predominantly basic level undergraduate courses, such as ENG 101 and 102, basic language instruction, and beginning level mathematics along with routine service participation, or
- ♦ provide temporary replacement for tenure line faculty.

ADJUNCTS

Part-time faculty who--

- ♦ teach in specialty fields that have insufficient demand for a full-time faculty member, such as HPR or instruction in a specific musical instrument; or
- ♦ are working or retired professionals whose teaching in their fields of expertise provides valuable experiences for students; or
- ♦ provide temporary replacement for full-time faculty who resign, retire, or are on professional development, sick, or other leave; or
- ♦ provide temporary response to enrollment growth (three years or less); or
- ♦ provide teaching that is performed by GTAs at other institutions.