

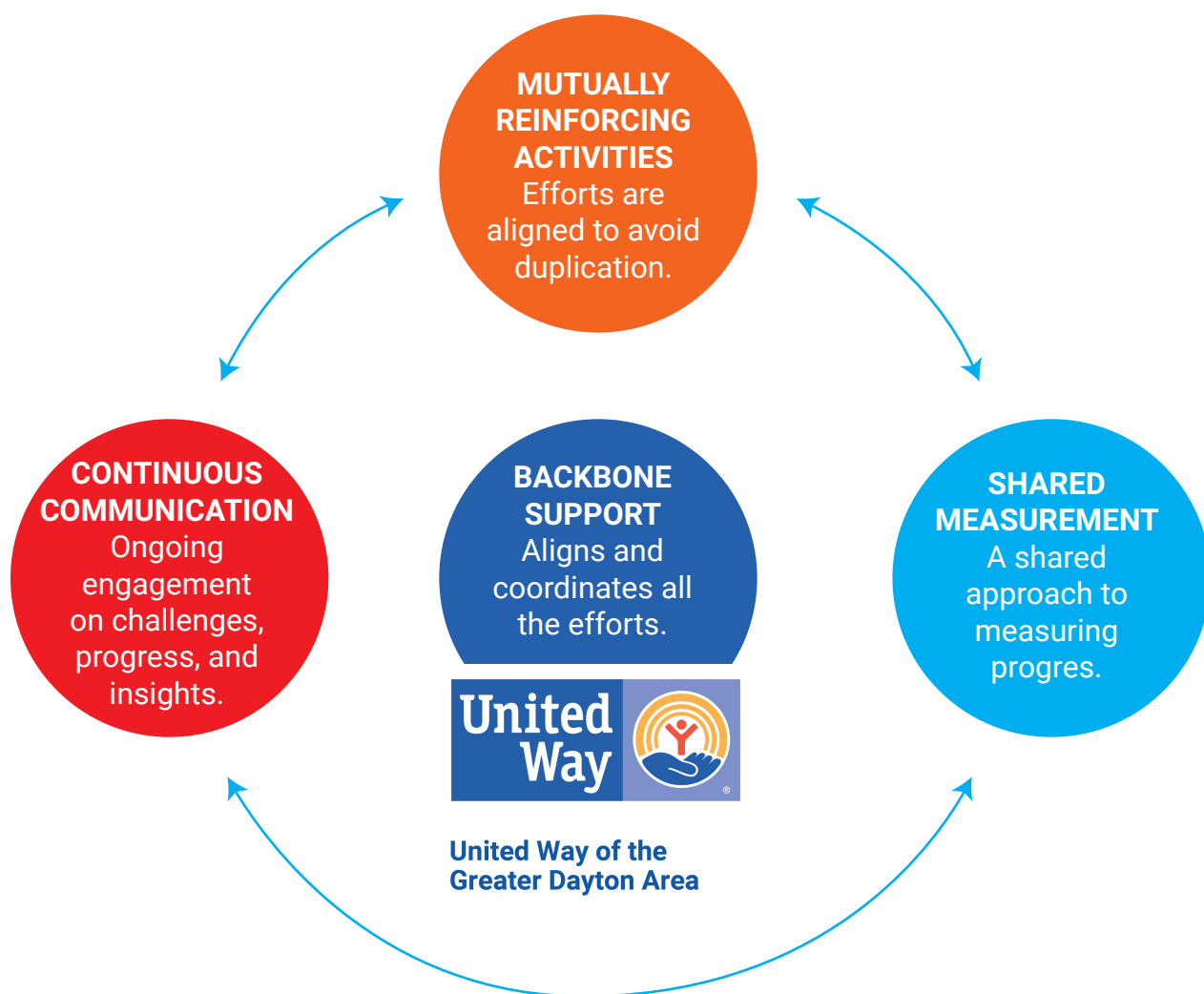
WHAT IS COLLECTIVE IMPACT?

United Way uses a Collective Impact model for its grantmaking but, you might be wondering ... what exactly is Collective Impact?

INSTEAD OF WORKING ALONE TO TACKLE OUR REGION'S COMPLEX SOCIAL PROBLEMS ...



UNITED WAY BRINGS VOLUNTEERS, COMPANIES, COMMUNITIES, AND ORGANIZATIONS TOGETHER TO ASSES THE MOST PRESSING NEEDS AND WORK WITH A COMMON AGENDA TO SOLVE THEM.



IT'S SIMPLE.

For example, United Way and its' donors cannot solve the Miami Valley's hunger issue alone—but by working closely with people fighting hunger in our area, assessing the biggest needs, focusing on a common goal, collecting and sharing results, and investing donor dollars into achieving those results—we can.

www.liveuniteddayton.org
937.225.3060