

Does Your Project Require an IRB Application?

Decision Tree #1

Will you, a member of your research team or a collaborator observe, interact with, or intervene with individuals to gather information that will be used for research? Examples:

- Surveys, questionnaires, focus groups, interviews
- Games, experiments in physical or in electronic environments
- Physical or biomedical procedures – imaging, scanning, blood collection, anthropomorphic procedures
- Diet, nutrition studies, taste tests
- Studies examining effectiveness of educational tools or curricula
- Use of instruments or devices, including phones, to collect data or monitor or influence behavior
- Passive observation of public behavior (in physical or online environments, including social media)
- Studies examining individuals' responses to manipulation of their physical or online environment
- Another activity that involves observation of, or interaction with, individuals to gather information for research

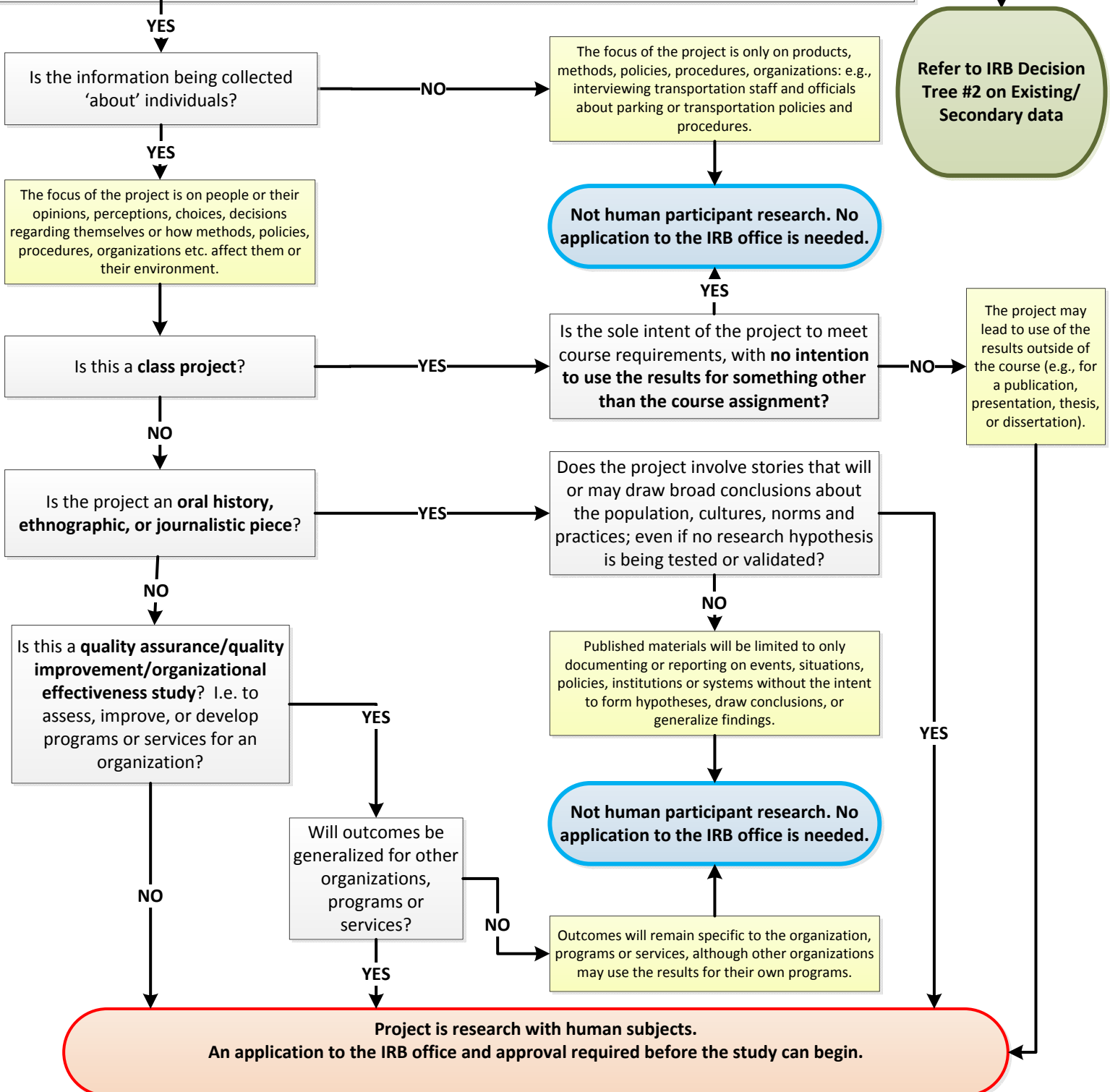
**NO,
research will use
only existing data**

**Refer to IRB Decision
Tree #2 on Existing/
Secondary data**

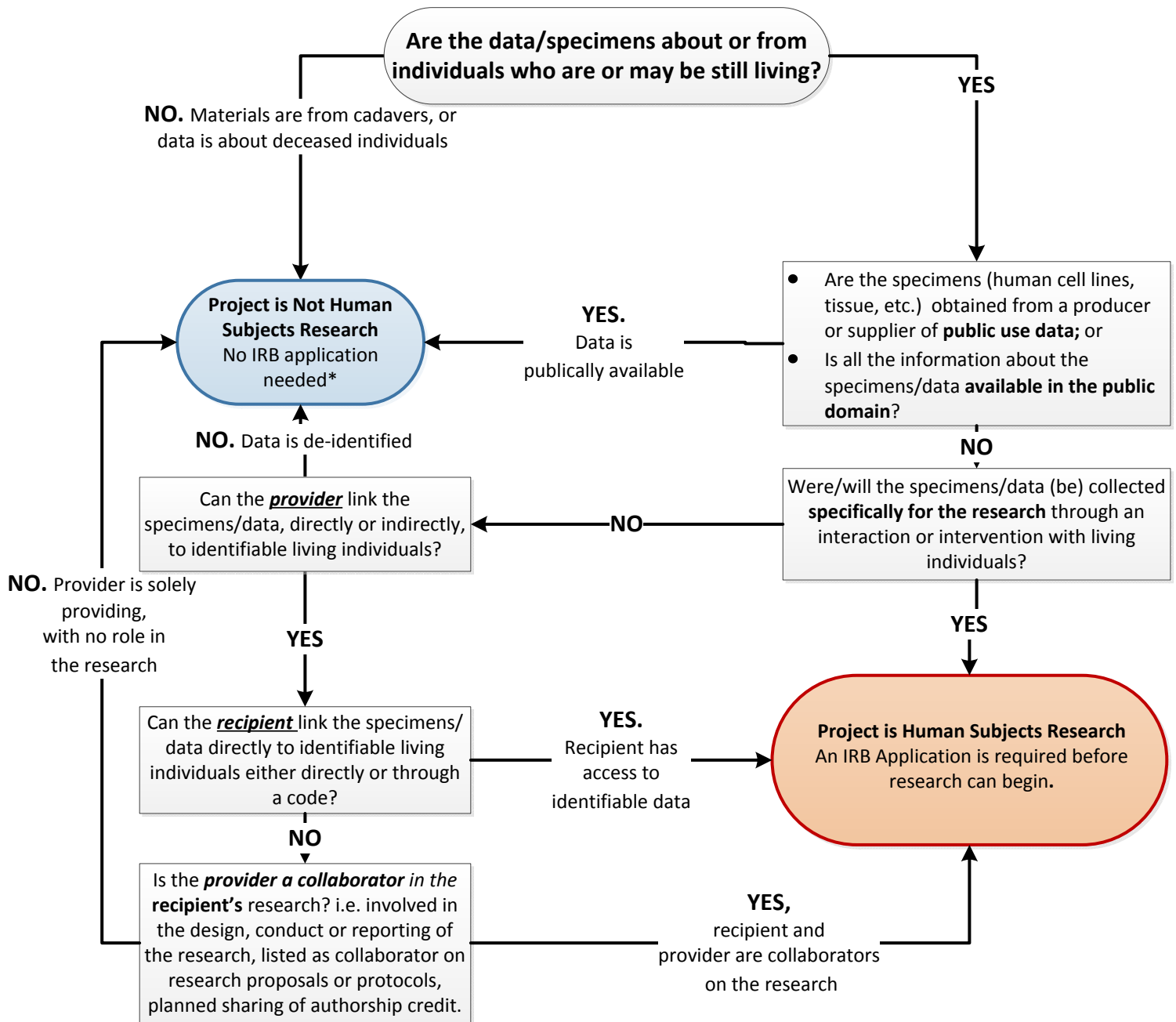
**Not human participant research. No
application to the IRB office is needed.**

**Not human participant research. No
application to the IRB office is needed.**

**Project is research with human subjects.
An application to the IRB office and approval required before the study can begin.**



Does Your Research Involving Secondary or Existing Data, Documents or Biological Specimens Require IRB Review?
Decision Tree #2



*Contact the Wright State IRB if acquiring the data requires a Data Use Agreement or a Materials Transfer Agreement between the provider and recipient.

Reference:

“Research Involving Private Information or Biological Specimens Flowchart”, National Institute of Health (NIH), January 2006
 Developed by Cornell University IRB, <https://researchservices.cornell.edu/offices/IRB>