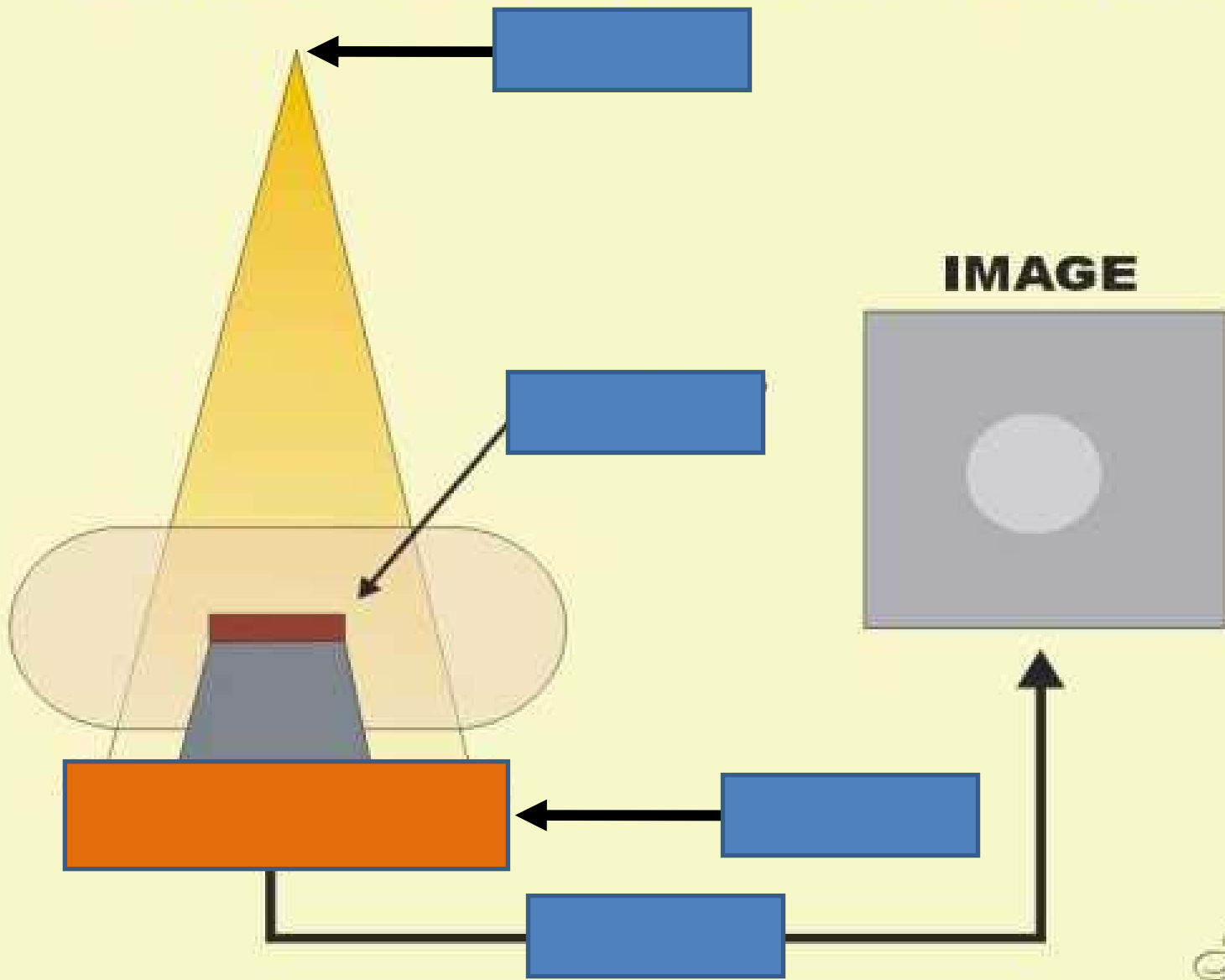
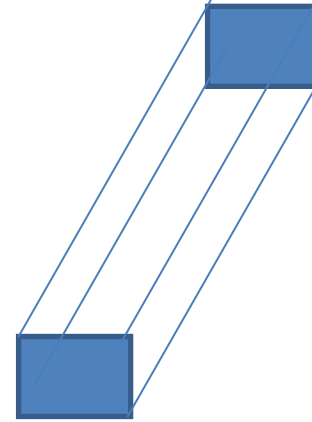
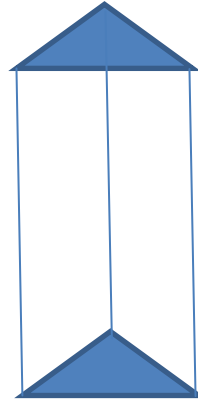
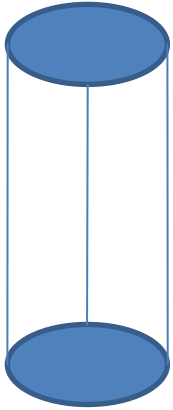


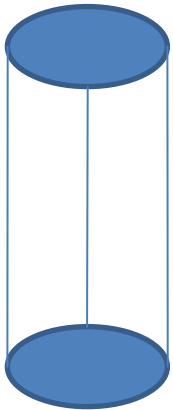
X-ray versus CT image formation



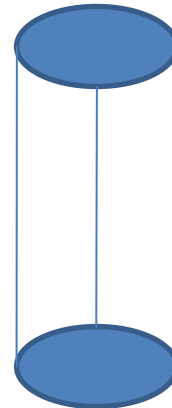
Which object would generate the image shown in the previous slide?



In CT how should this object be placed to get the image on Slide 1?



In X-ray how should this object be placed to get the image on Slide 1?

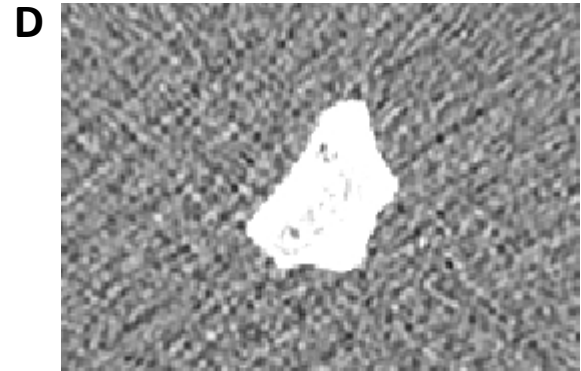


Radius

X-ray



CT



P: Proximal

D: Distal

Humerus

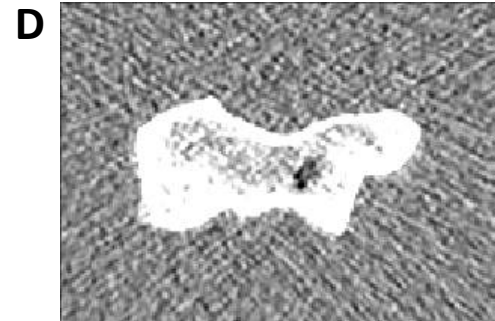
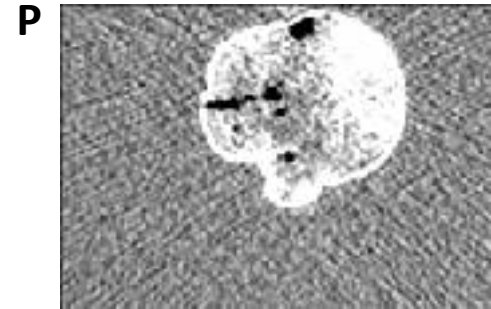
X-ray



D



CT



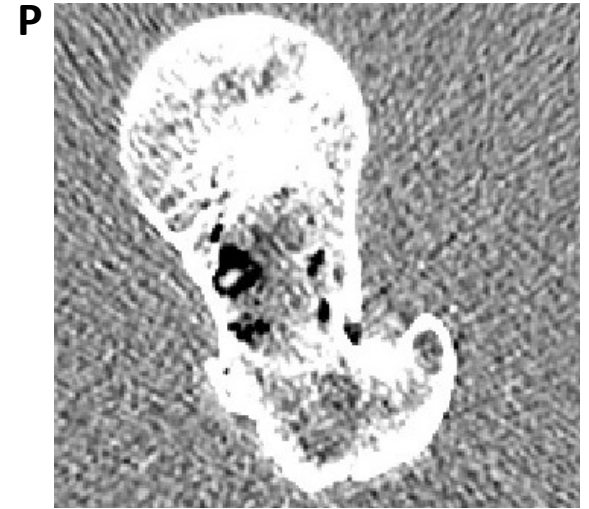
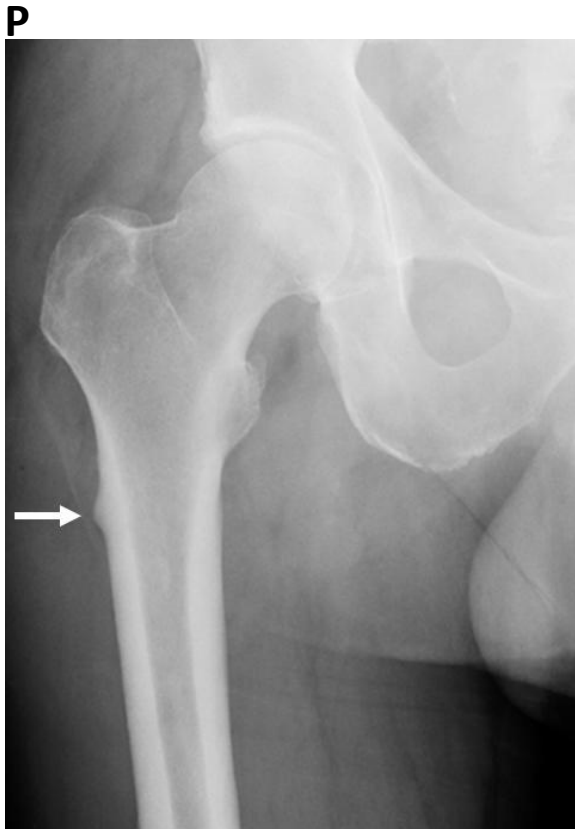
P: Proximal

D: Distal

Femur

X-ray

CT



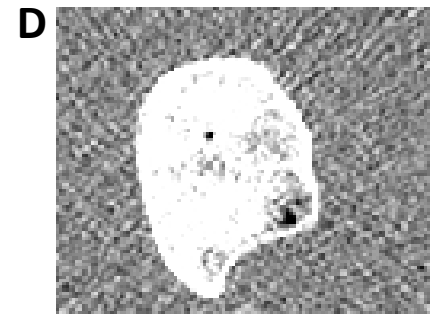
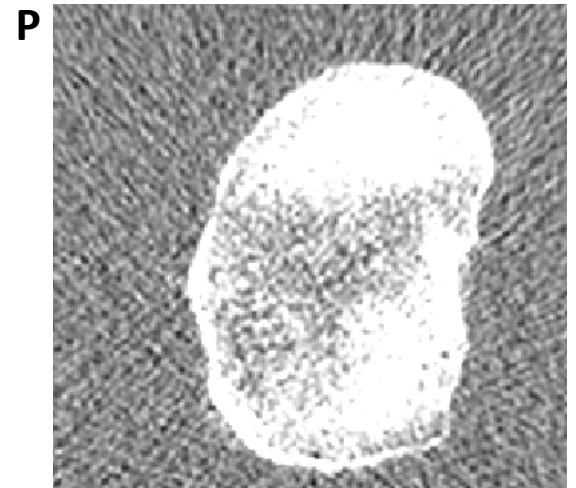
P: Proximal
D: Distal

Tibia

X-ray



CT



P: Proximal

D: Distal

Bone Names

This is a fun way to learn bone names.

Learning game: <http://www.anatomyarcade.com/games/WAB/WAB.html>

Anatomical names vs. Common Names

- Tibia: Shin bone
- Clavicle: Collar bone
- Scapula: Shoulder blade
- Vertebral Column: Spine
- Knee cap: Patella
- Not a bone: Funny bone
- Mandible: Jaw bone
- Costals: Ribs
- Coccyx: Tail bone
- Talus: Ankle bone
- Calcaneus: Heel bone
- Phalanges: Fingers
- Carpals: Wrist bone
- Pelvis: Hip bone
- Sternum: Breastbone