

SKELETAL SYSTEM

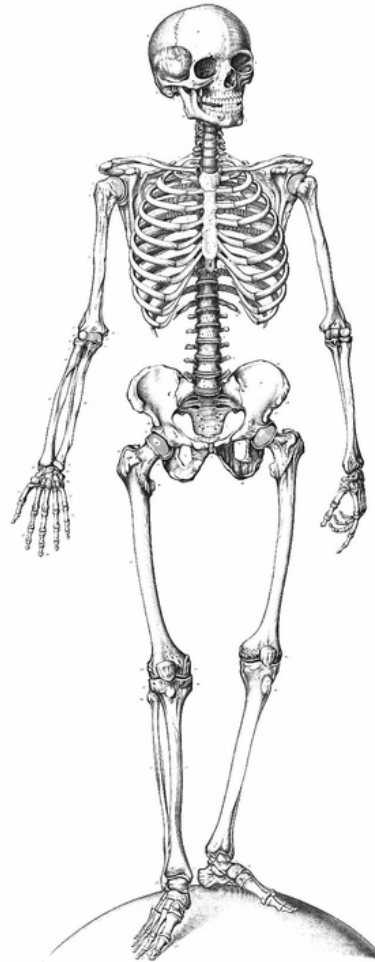
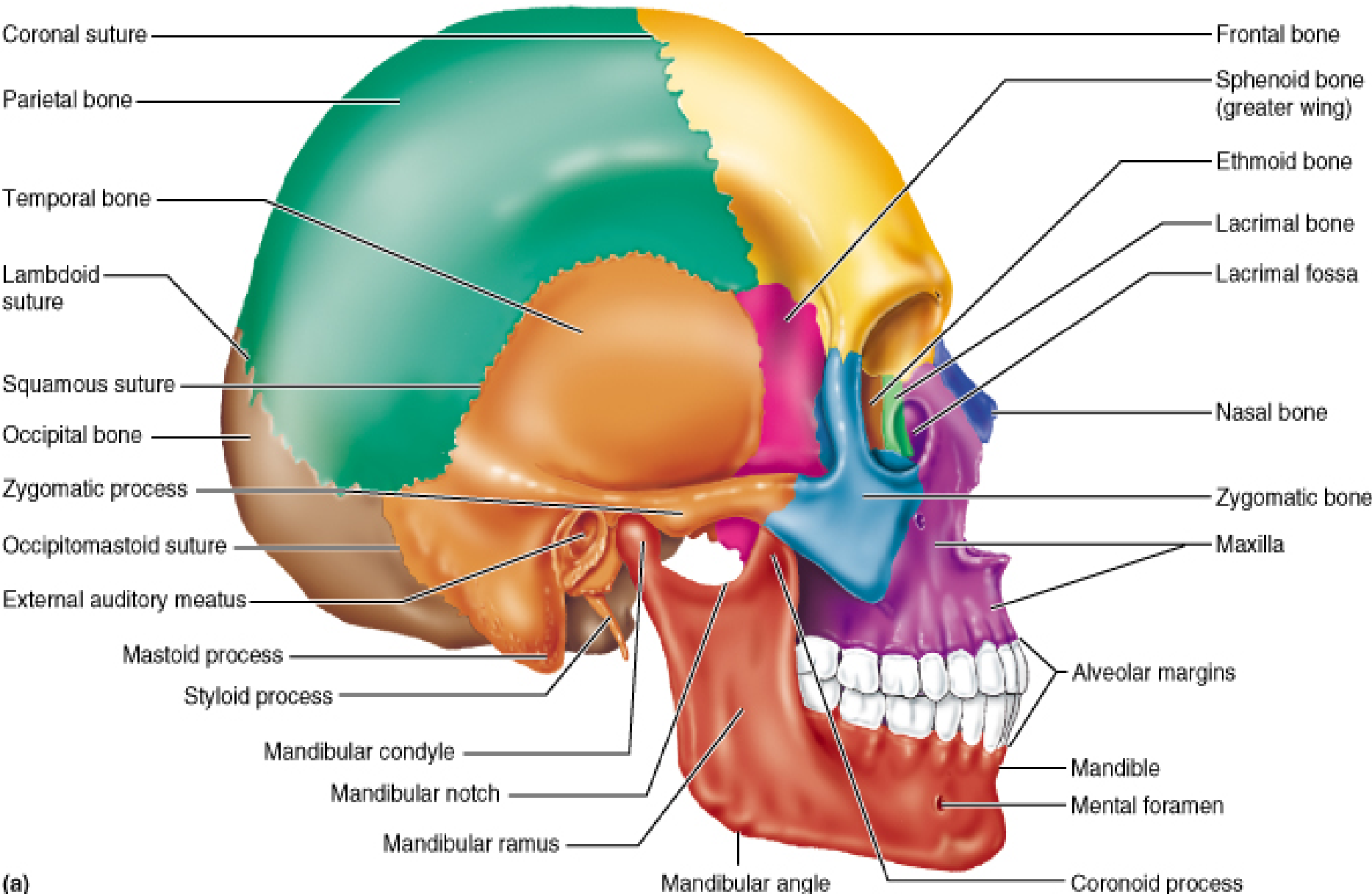
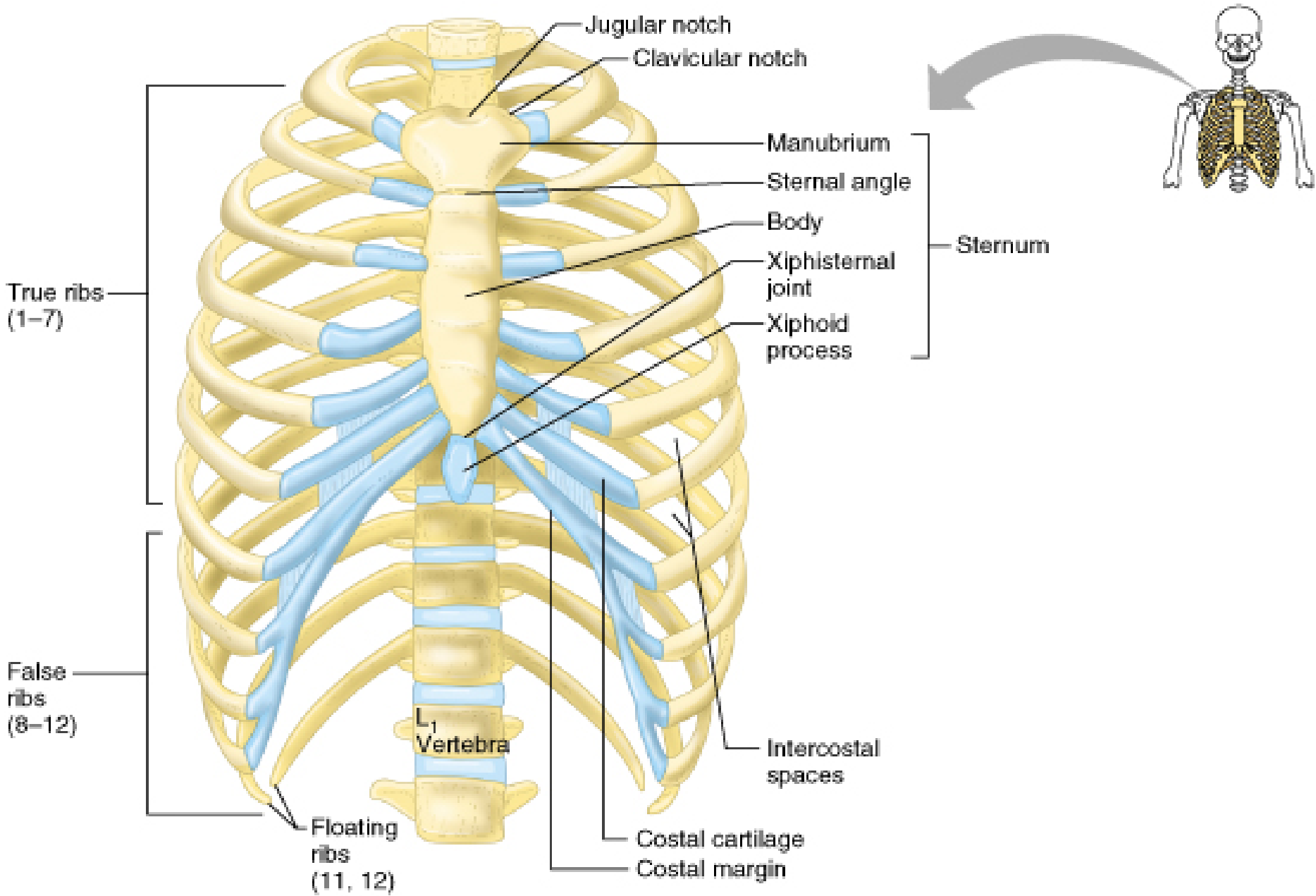


PLATE 1

THE HUMAN SKELETON



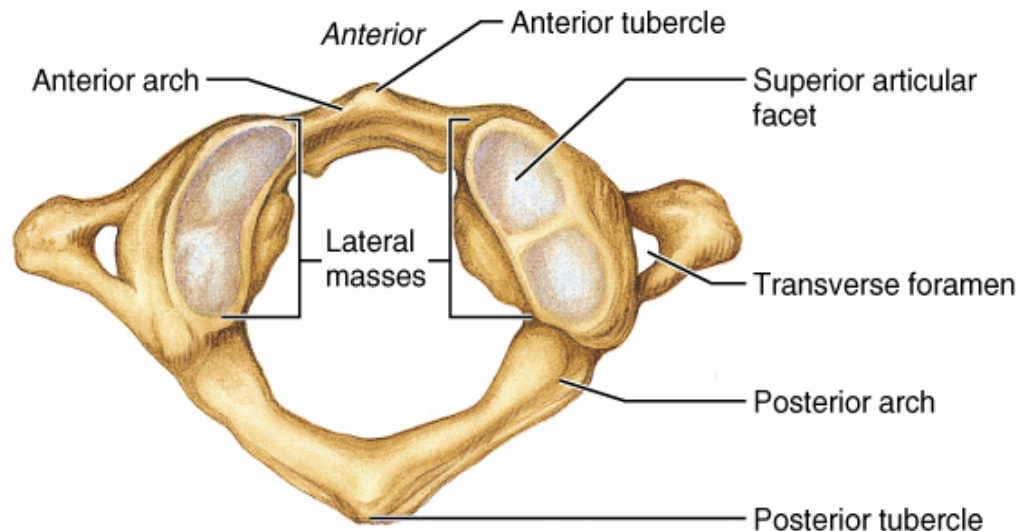
(a)



(a)

C1: atlas

- anterior arch with tubercle
- posterior arch with tubercle
- lateral mass
- transverse process
- transverse foramen (vertebral artery)

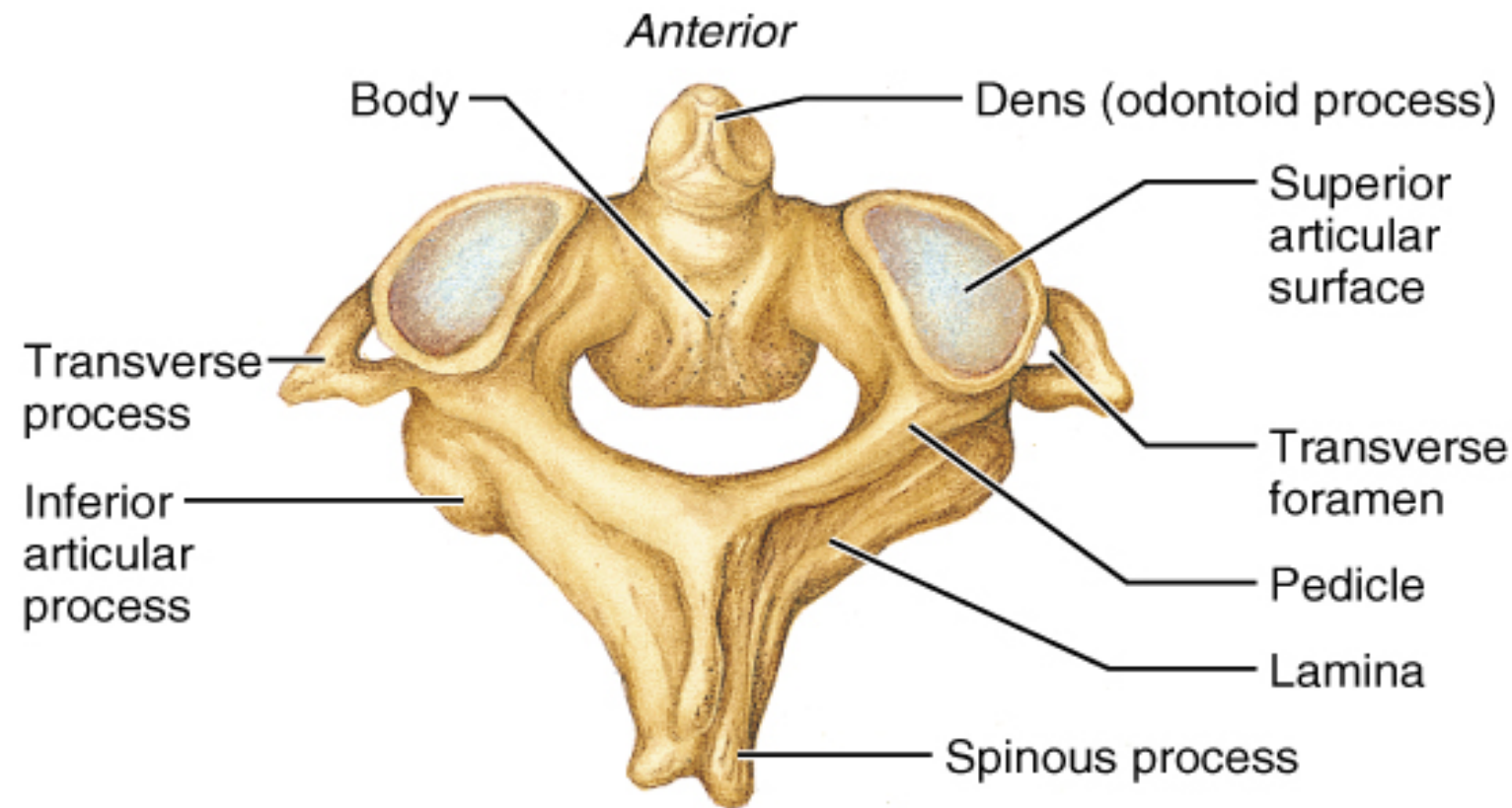


(a) Superior view of atlas (C₁)



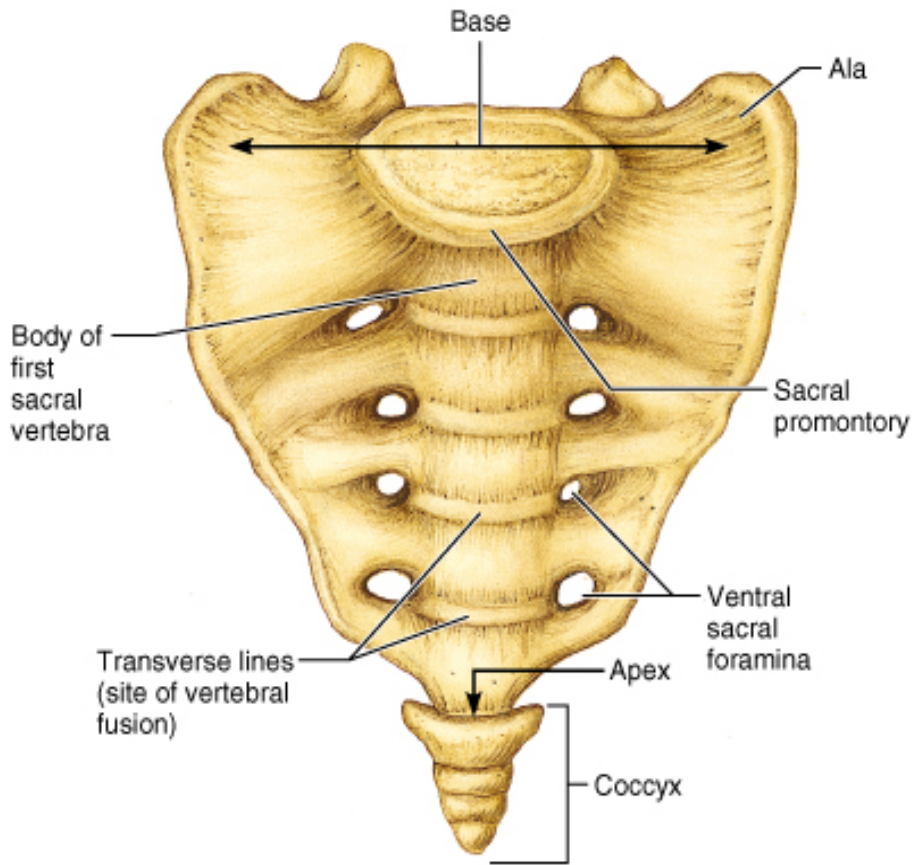
C2: axis or epistropheus

- odontoid or dens
- transverse foramen
- transverse ligament (atlas)



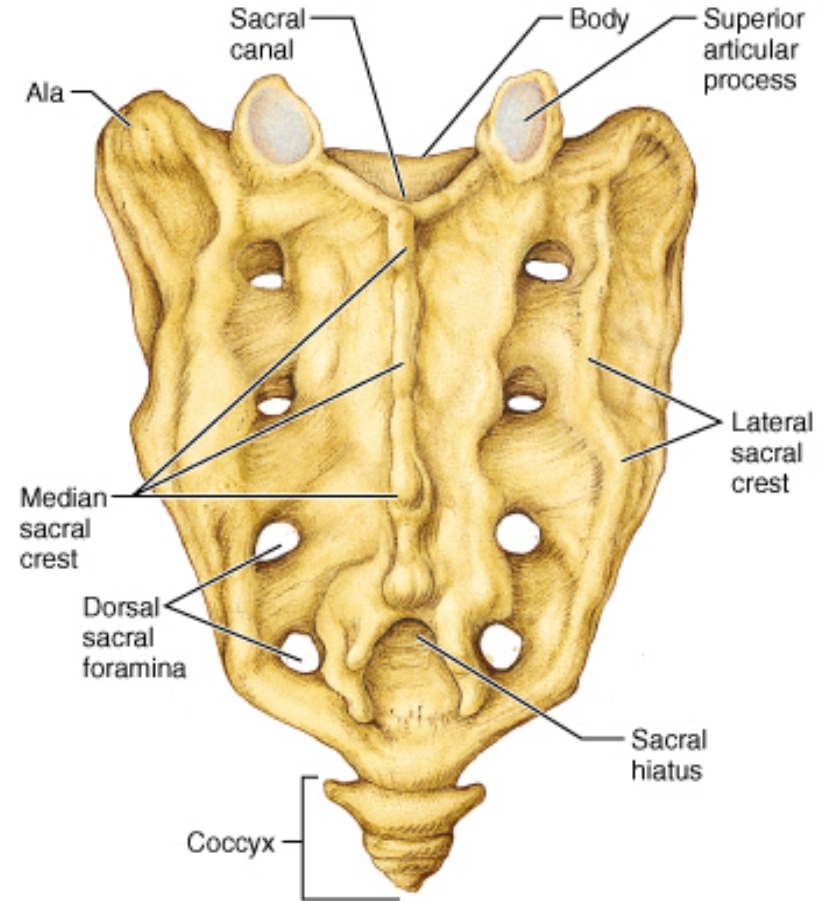
(c) Superior view of axis (C₂)





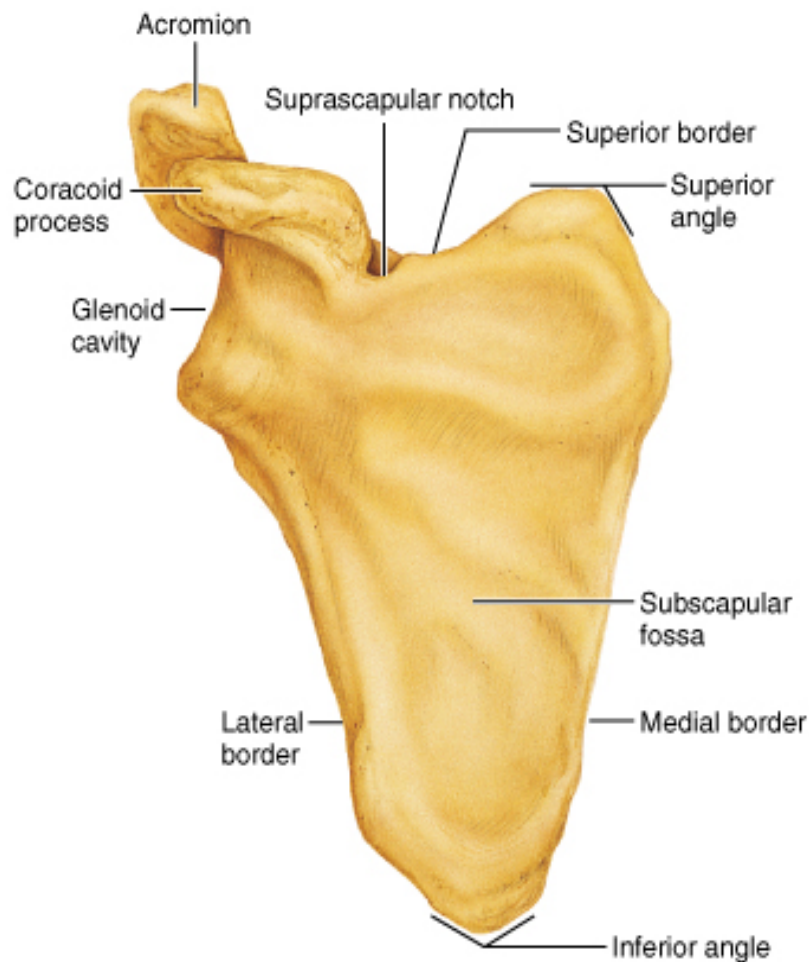
(a) Superoanterior view

Copyright © 2001 Benjamin Cummings, an imprint of Addison Wesley Longman, Inc.

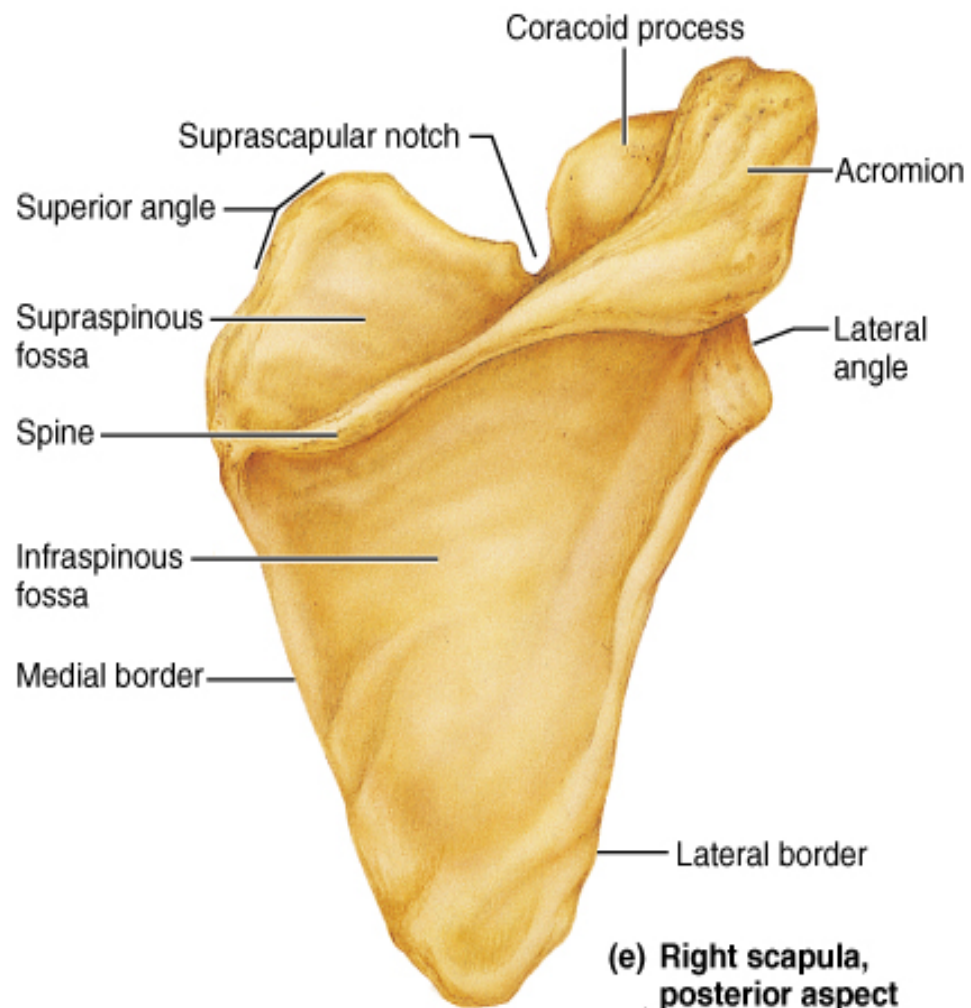


(b) Posterior view

Copyright © 2001 Benjamin Cummings, an imprint of Addison Wesley Longman, Inc.



(d) Right scapula, anterior aspect



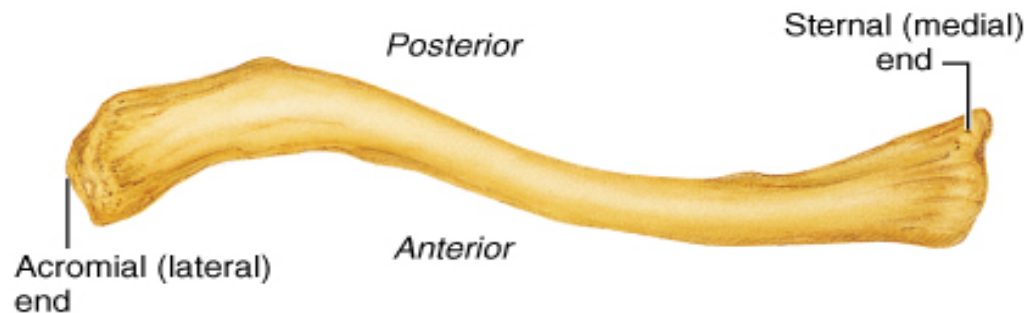
(e) Right scapula, posterior aspect

2- Clavicle

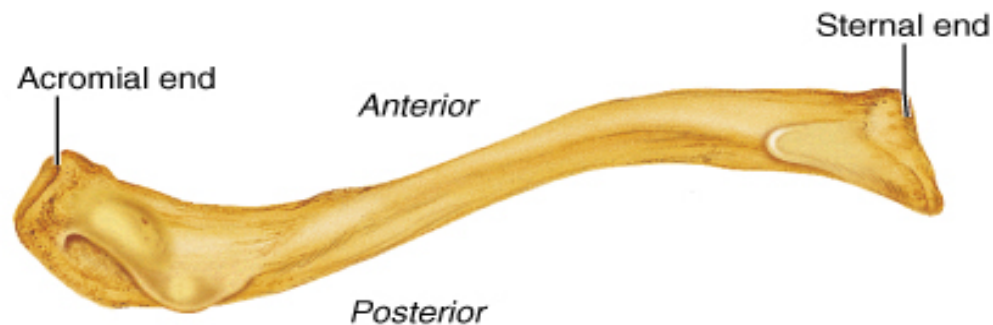
a. acromial extremity

b. sternal extremity

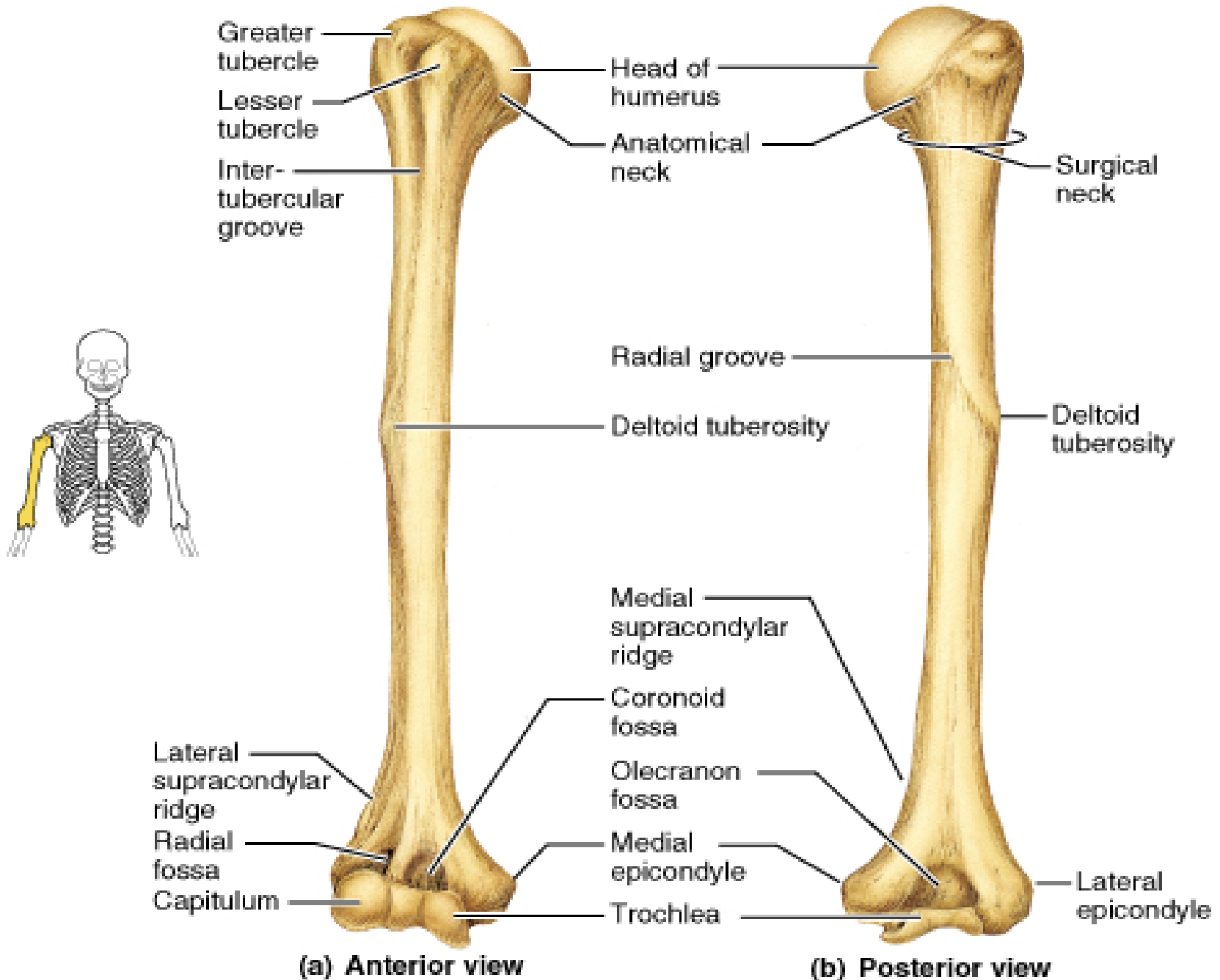
c. conoid tubercle

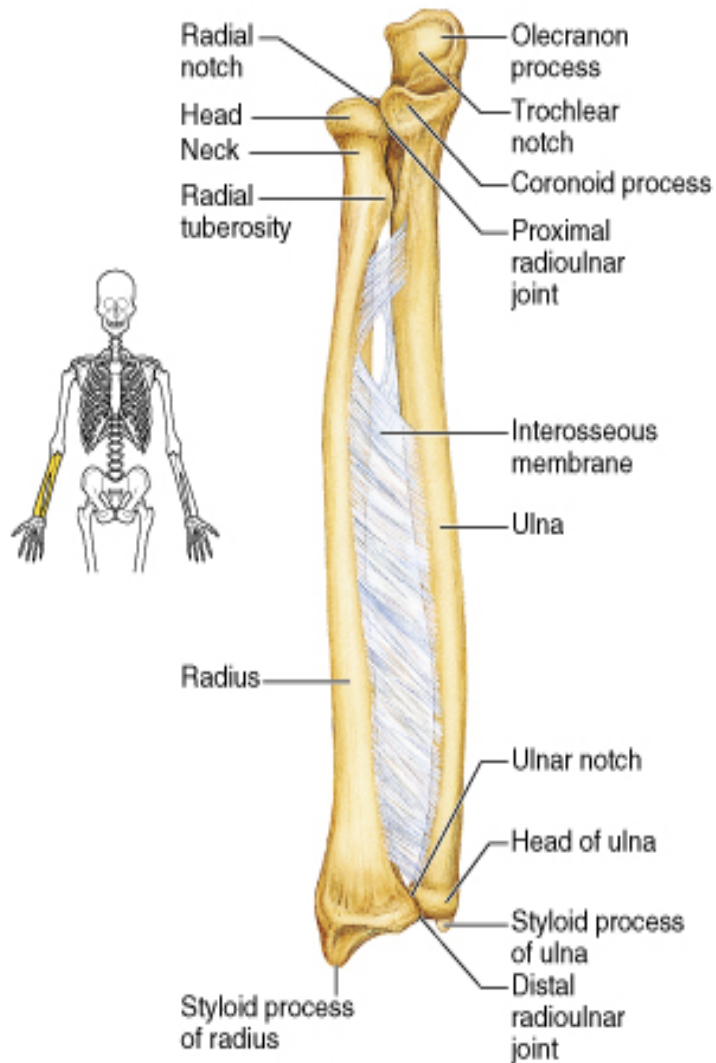


(b) Right clavicle, superior view

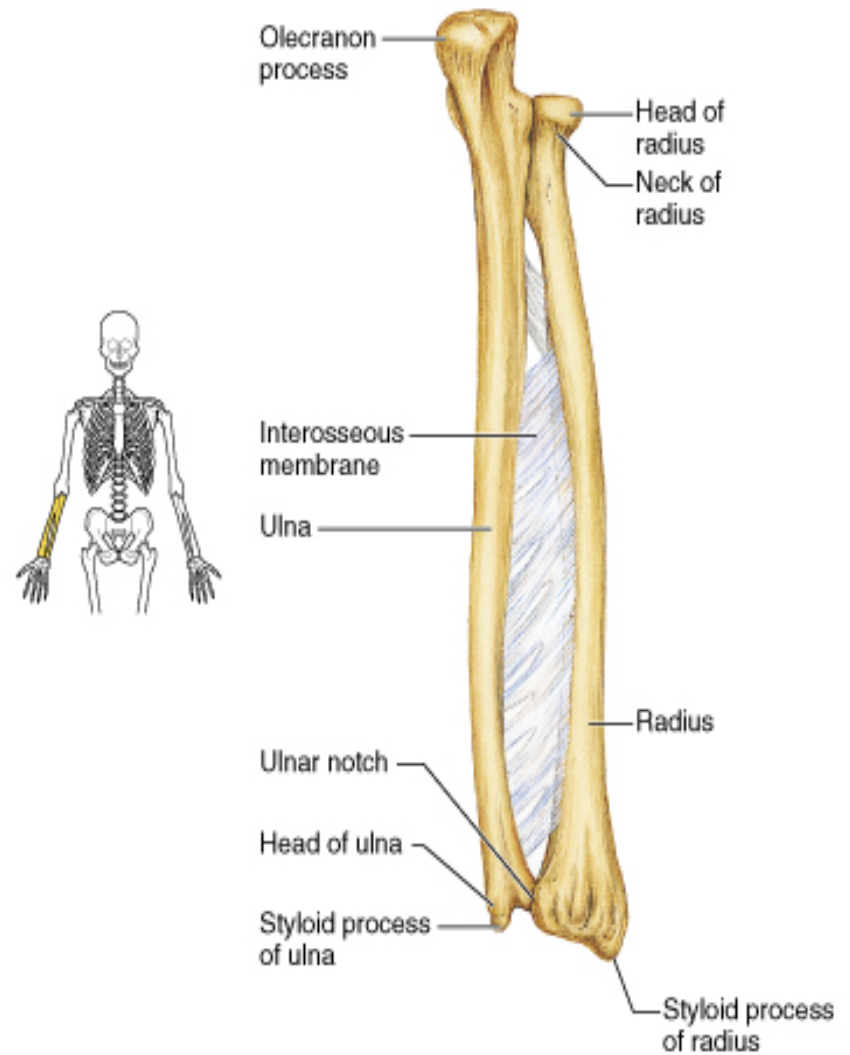


(c) Right clavicle, inferior view

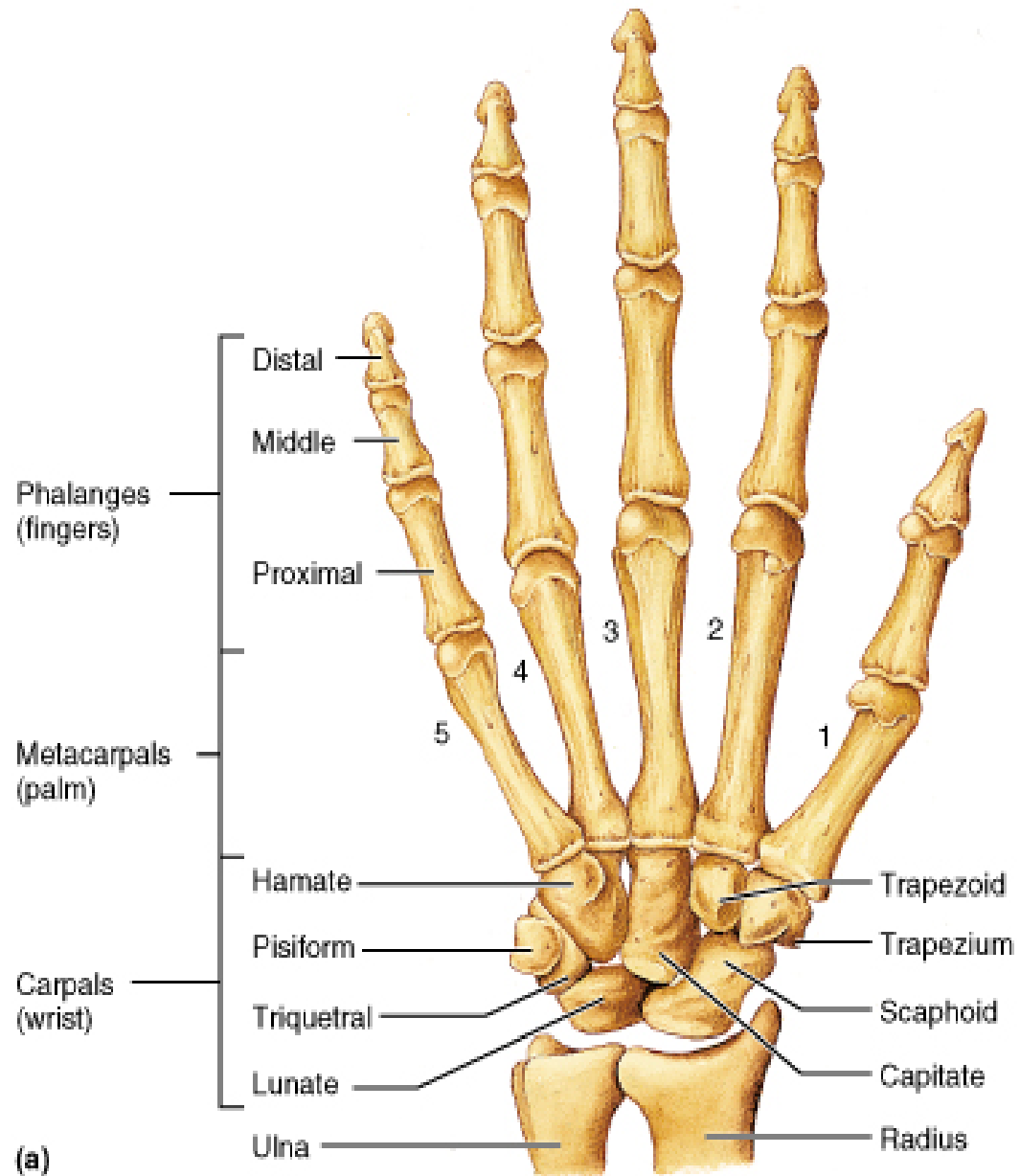


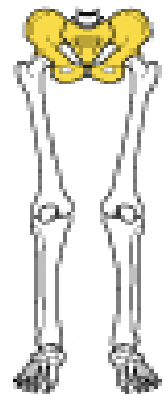
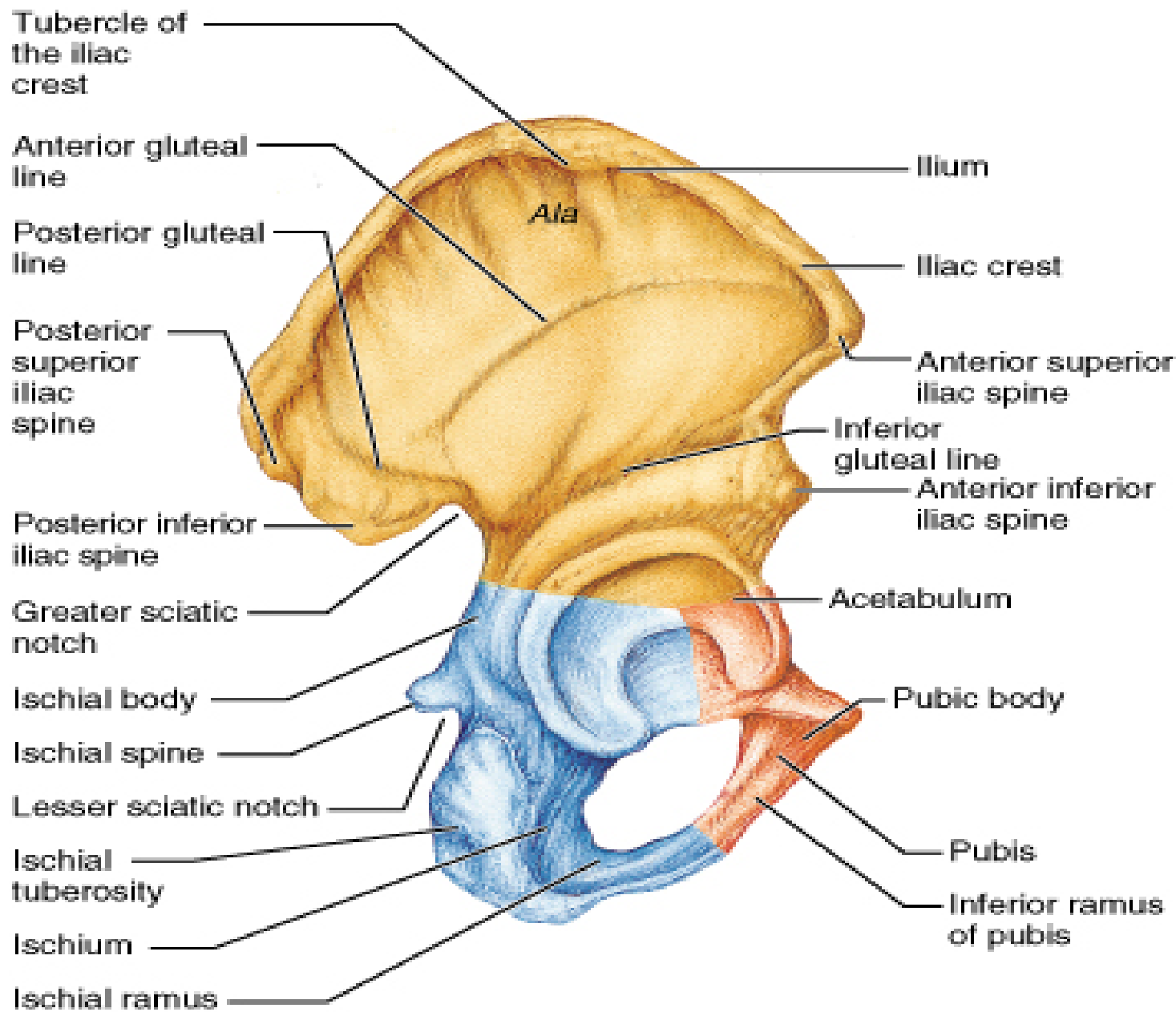


(a) Anterior view

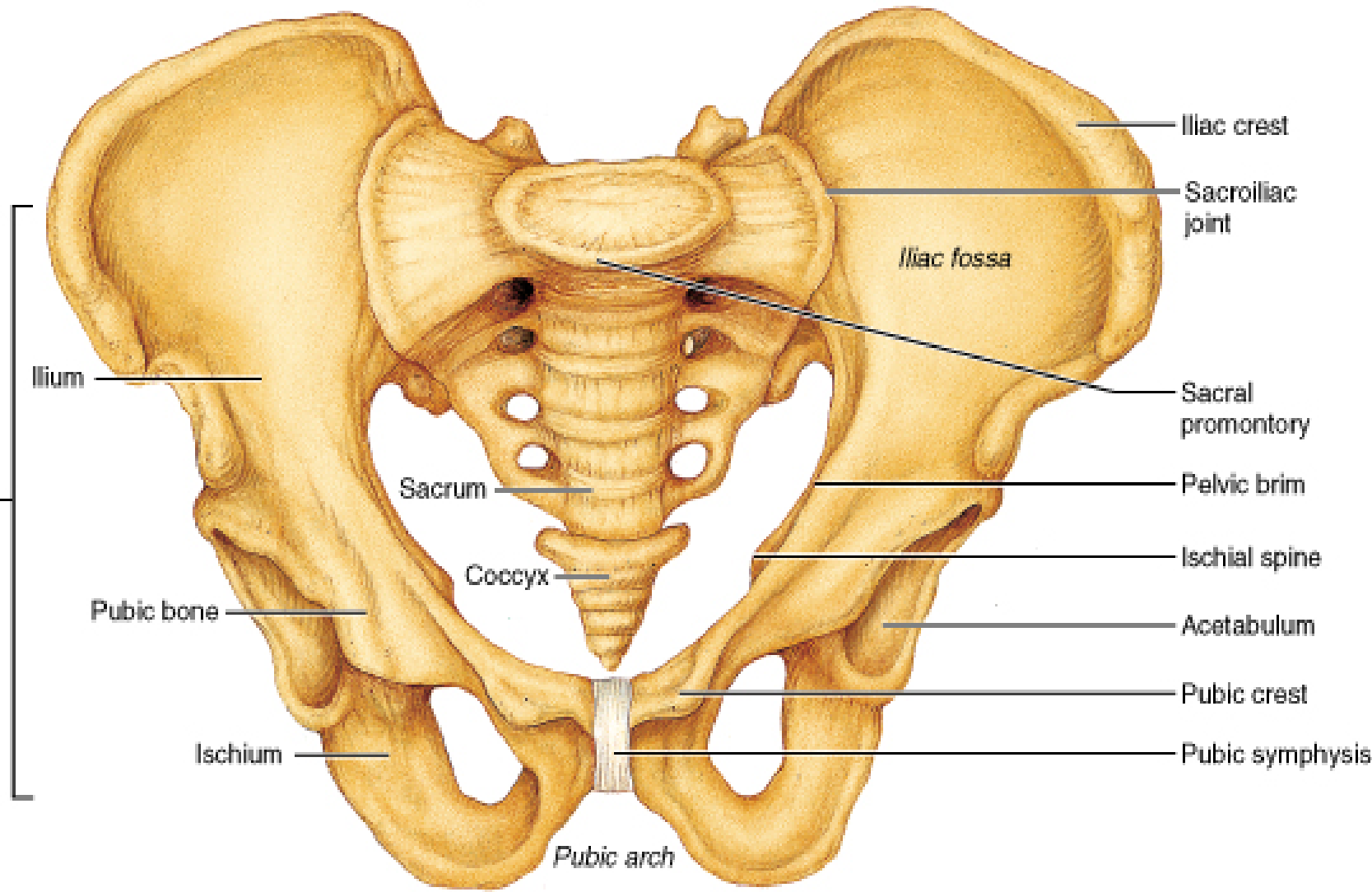
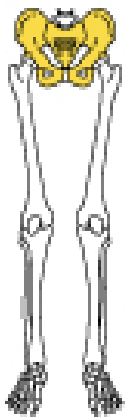


(b) Posterior view

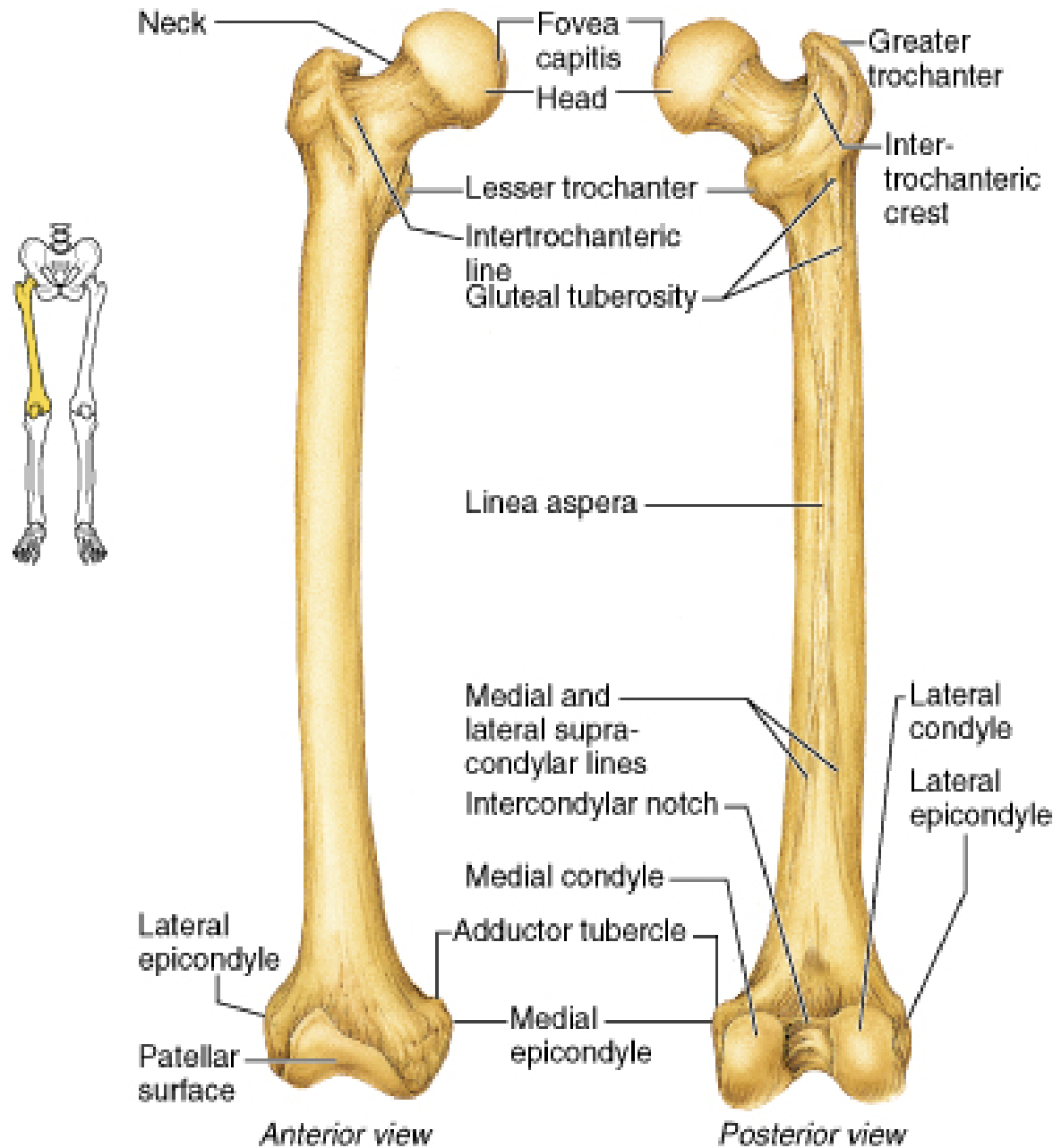




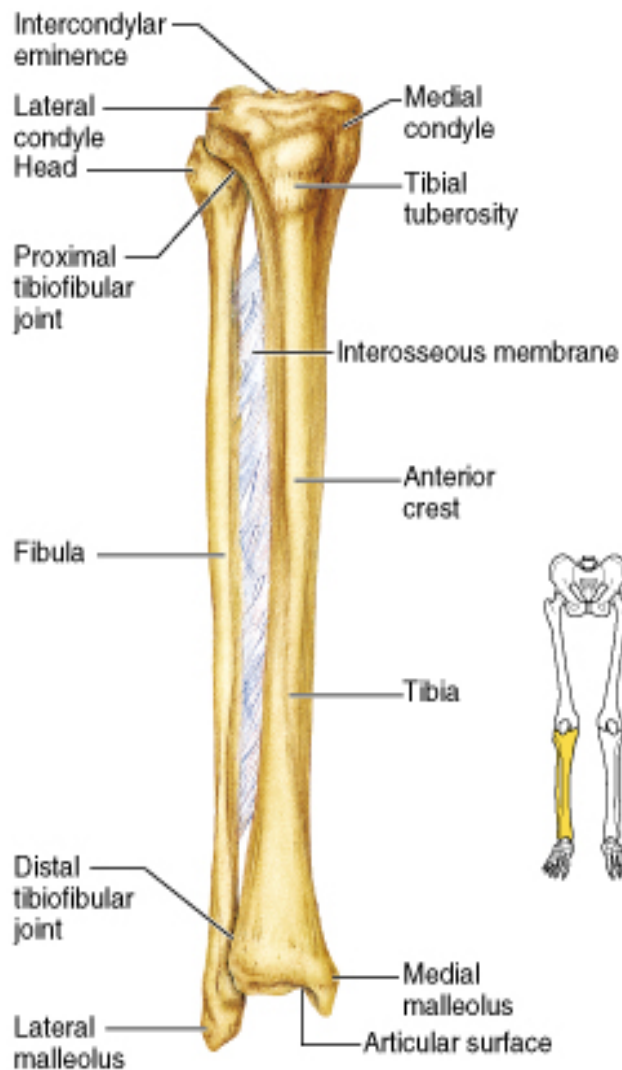
(b)



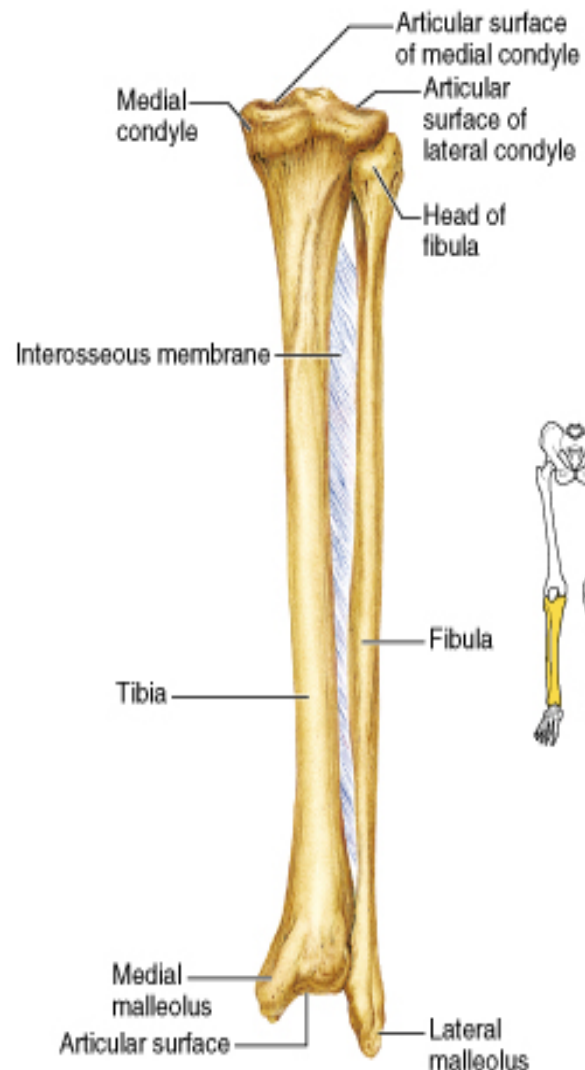
(a)



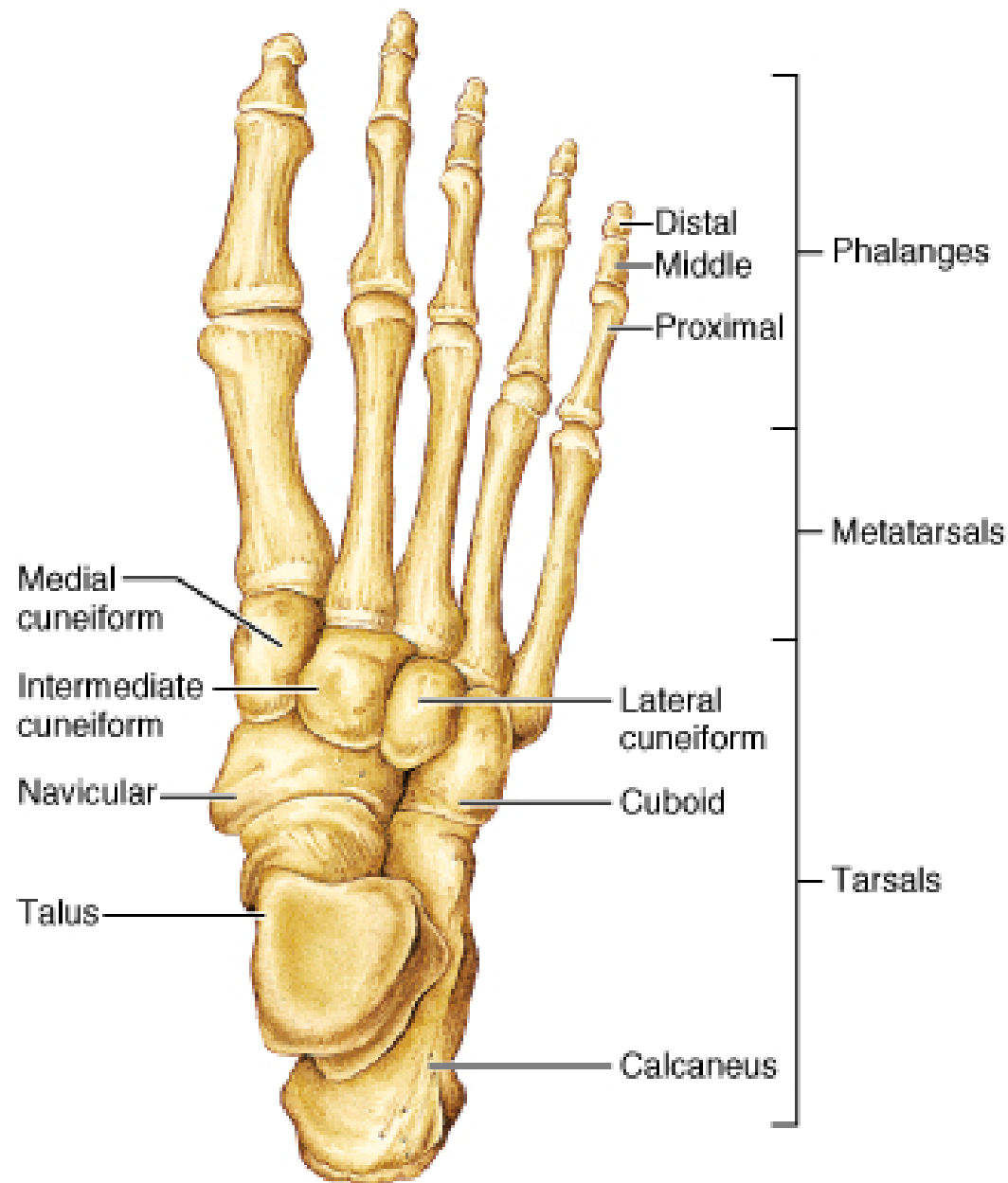
(b) Femur



(a) Anterior view



(b) Posterior view



(a) Superior view