

CPT - Curricular Practical Training

Do you have a job offer??

Yes

Do you have a specific employment *beginning* and *ending* date?

Yes

Apply at least two weeks prior to your requested work beginning date (minimum processing time)

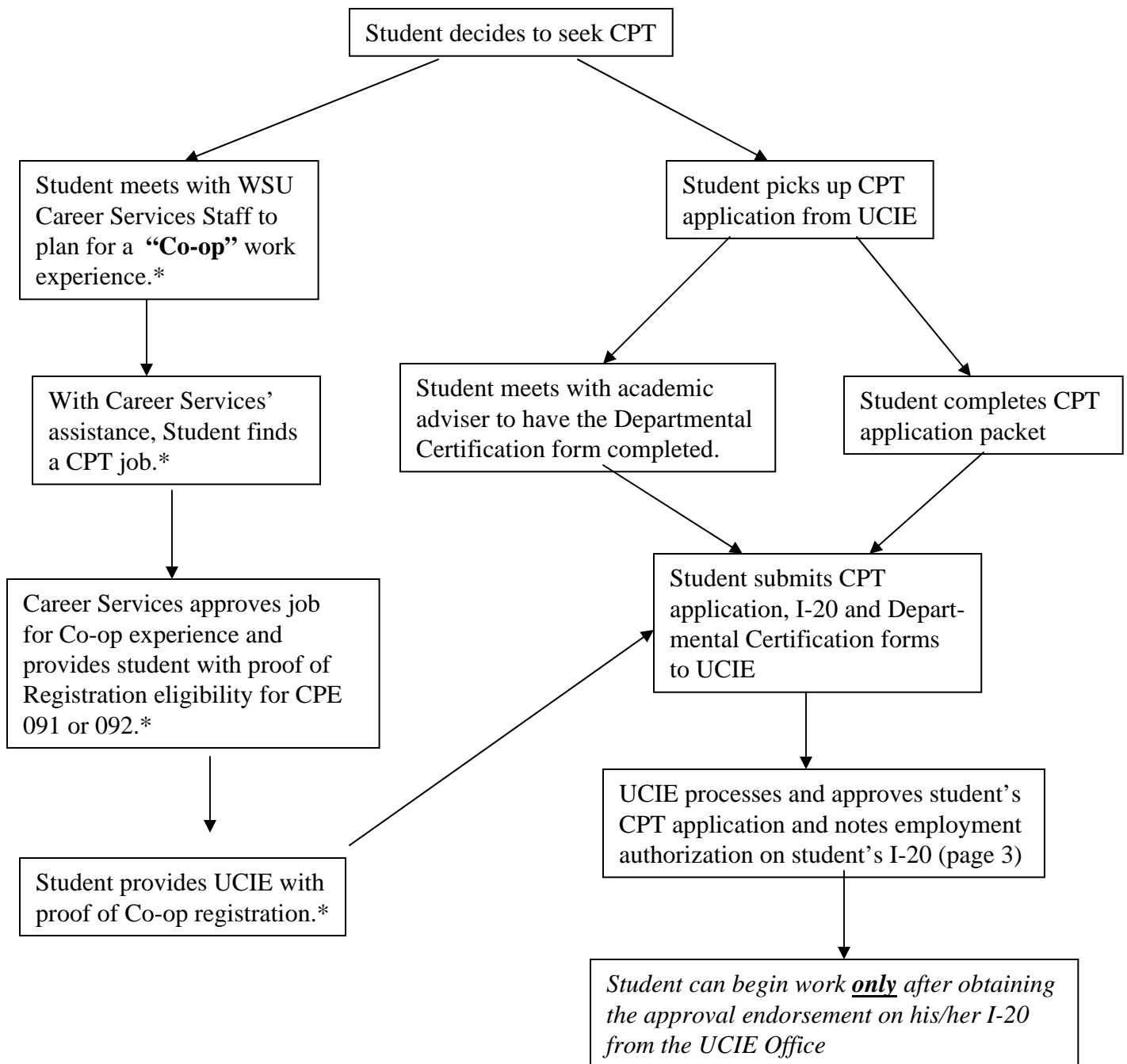
No

You need to know those dates before you can apply, as CPT must be oriented around the academic quarter calendar.

No

You need to have a job offer with beginning and ending dates before applying for the CPT work permission. You should also review the UCIE Webpage at <http://www.wright.edu/ucie/students/employment.html> in order to complete Application for work authorization. *Review the application flow chart on the reverse side of this sheet to better understand the sequence of processing.*

CPT - Curricular Practical Training Flow Chart



*Another method to qualify for CPT employment authorization is to follow steps similar to those (above) but through your academic department (not Career Services) to register for an internship or practicum credit(s) in your major.