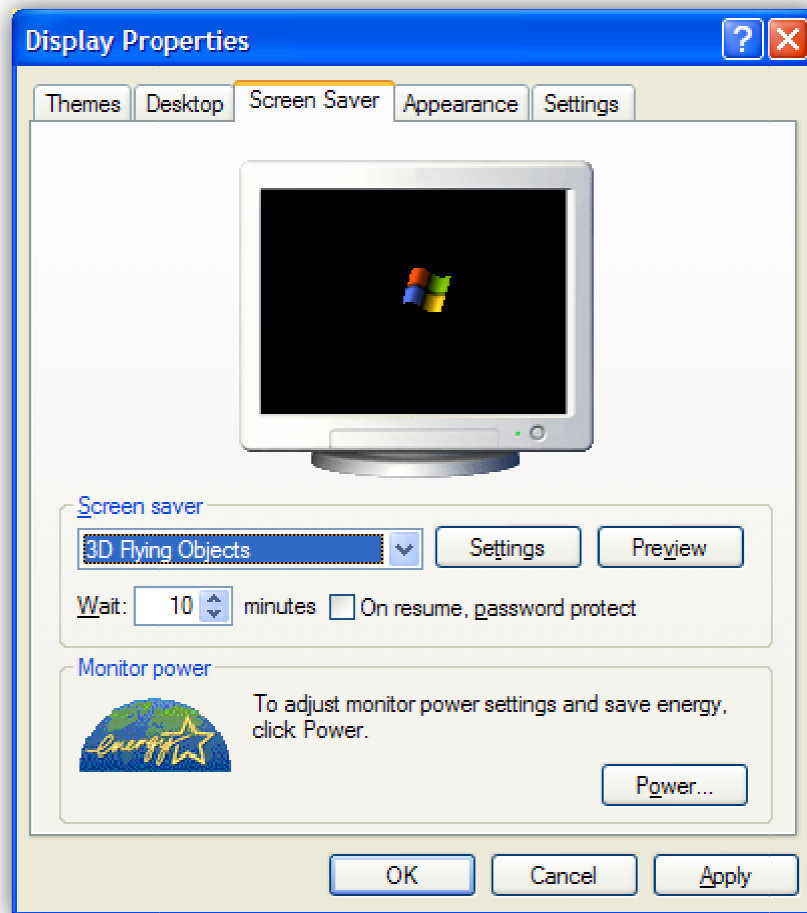


Windows: Setting up a Screen Saver Password

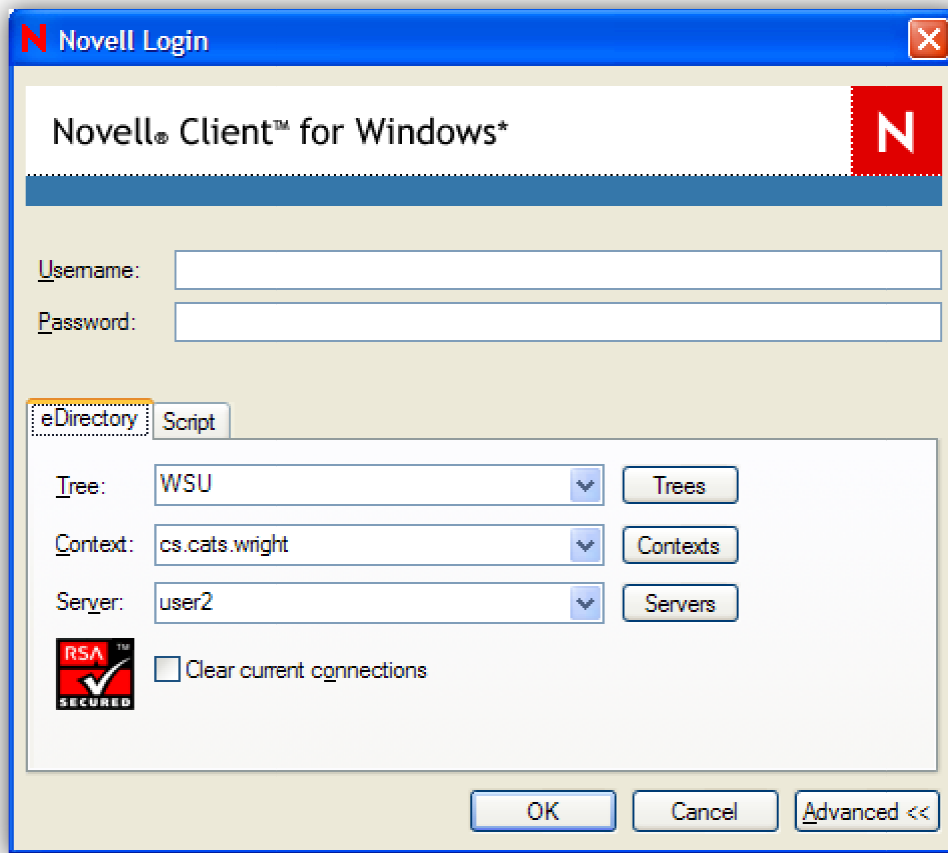
If you want to stay logged into your computer while you are away from it, but need to prevent others from using it, you can set up a Screen Saver Password.

1. Right click on an open area of your Desktop and select **Properties** to open the **Display Properties** dialog box.
2. Click on the **Screen Saver** tab, shown below.



3. Choose a Screen Saver from the drop down list.
4. Select the **Wait** time. It is recommended you select a 3-5 minute wait time for the screen saver to start.
5. Place a check mark in the **On resume, password protect** box.

To continue working when you return to the computer just type your password in the Novell log in box, shown below.



Using a password protected screen saver does not prevent other users from turning off the computer and restarting it, then logging into their own account. If you think this could happen, be sure to save your work before you leave your computer.