

**Wright State University**

**FY 2010-11 Staffing Analysis**

DRAFT - 4/12/11

## **Wright State University FY 2010-11 Staffing Analysis**

The 4/12/11 Staffing Analysis draft consists of the following:

1. University Student/Faculty/Staff Population and Budgeted Compensation (FY2007 – FY 2011)
  - Student fall headcount and all terms student credit hours/FTE with ratio of FTE to headcount. Faculty/staff FTE and vacancies.
  - Budgeted compensation as percent of total gross budget by college/unit.
2. Staffing data by academic and non-academic colleges and divisions from FY 2007 to FY 2011
  - Faculty/staff FTE and ratio of student FTE to faculty/staff FTE
3. Comparison of student FTE per various faculty/staff categories by college (FY 2007 – FY 2011)
  - Graphical representation of student **FTE** per faculty/staff by college
  - Graphical representation of student **FTE** per faculty/staff by employee type
4. FY 2011 faculty/staff ratios sorted by college and rank
  - Student **FTE** per various faculty/staff categories
5. Wright State University Main Campus as compared to the median for the 13 state supported University Main Campuses
  - Student credit hours taught to undergraduates by faculty appointment status (Fall 2002 – Fall 2008)
  - Ratio of faculty headcount to student FTE and student headcount ratio for tenure-line and all full-time faculty (FY05– FY09)

Appendix A: Staffing Analysis Definitions

Appendix B: Faculty Staffing Guidelines

Please note that the reports in this document are based on various data sources with different data parameters and therefore there may be some data variations.

1. University Student/Faculty/Staff Population and Budgeted Compensation (FY 2007 – FY 2011)
  - Student fall headcount and all terms student credit hours/FTE with ratio of FTE to headcount. Faculty/staff FTE and vacancies.
    - Budgeted compensation as percent of total gross budget by college/unit

**Wright State University**  
University Student/Faculty/Staff Population

**DRAFT**  
2011 Update  
4/12/11

	<u>Fall Student Headcount</u>	<u>Fall Student FTE</u>	<u>FTE/ Headcount</u>		<u>All Terms SCH</u>	<u>All Terms FTE</u>	<u>% Change</u>
2006	16,870	13,943	83%	2006-07	656,270	14,584	-1.9%
2007	16,913	14,090	83%	2007-08	665,224	14,783	1.4%
2008	17,662	14,591	83%	2008-09	689,064	15,313	3.6%
2009	18,786	15,318	82%	2009-10	719,380	15,986	4.4%
2010	19,793	16,022	81%	2010-11	751,741	16,705	4.5%

**Budgeted FTE - Unrestricted Base Budget Positions**

	<b>Filled &amp; Vacancy Positions</b>				<b>Vacancy Positions</b>				<b>AAUP (b)</b> Tenure Line (Filled Positions)	Tenure Line (Vacancy Positions)
	<u>Faculty *</u>	<u>All Staff</u>	<u>Unclassified Staff</u>	<u>Classified Staff</u>	<u>Faculty *</u>	<u>All Staff</u>	<u>Unclassified Staff</u>	<u>Classified Staff</u>		
FY07(c)	701	1329	621	709	35	91	38	53	485	26
FY08	769	1335	627	708	64	84	38	46	491	52
FY09	780	1365	655	710	35	70	33	37	502	26
FY10	786	1351	656	695	34	111	45	65	506	22
FY11	776	1326	667	660	48	86	42	45	481	39

\* Faculty includes Full Professors, Associate Professors, Assistant Professors, Lecturers, and Instructors

Note: Vacancy FTE are included in the Full-Time Faculty, Unclassified and Classified count. SOM vacancy FTE are excluded from all counts.

(a) In FY05 SOM reallocated 46.00 full-time faculty FTE to restricted funds.

(b) Source: AAUP Faculty Salary Survey. Includes tenured and tenure track faculty.

(c) FY07 FT Faculty/Staff FTE data is as of March 2007 and the Vacancy FTE data is as of 5/31/07.

**Wright State University**  
 Budgeted Compensation as % of Total Gross Budget

**DRAFT**  
 FY2011 Update  
 4/12/11

**Fiscal Year 2010-11**

College/Unit	Benefits		Budgeted Faculty		Budgeted Unclassified		Budgeted Classified		Total Gross Budget
	\$	% Gross Budget	\$	% Gross Budget	\$	% Gross Budget	\$	% Gross Budget	Gross Budget
President	\$ 586,407	18.69%	\$ 540,554	17.23%	\$ 1,007,830	32.12%	\$ 313,905	10.00%	\$ 3,137,670
Provost - Non Academic	\$ 3,962,903	43.21%	\$ 442,075	4.82%	\$ 7,748,800	84.50%	\$ 2,692,434	29.36%	\$ 9,170,330
UVCL	\$ 541,584	20.14%	\$ 144,988	5.39%	\$ 1,212,041	45.06%	\$ 204,278	7.60%	\$ 2,689,563
VP Business & Fiscal Affairs	\$ 5,778,838	14.14%	\$ -	0.00%	\$ 5,726,573	14.02%	\$ 6,883,210	16.85%	\$ 40,857,095
VP Student Affairs	\$ 2,899,593	22.09%	\$ 10,000	0.08%	\$ 5,644,598	43.00%	\$ 2,015,857	15.36%	\$ 13,127,340
VP University Advancement	\$ 741,426	20.57%	\$ -	0.00%	\$ 1,666,464	46.23%	\$ 298,980	8.29%	\$ 3,604,452
VP Curriculum & Instruction	\$ 867,507	14.52%	\$ 841,594	14.09%	\$ 1,499,979	25.10%	\$ 314,305	5.26%	\$ 5,974,990
Other Institutional	\$ 3,697,827	6.06%	\$ 2,983	0.00%	\$ 21,540	0.04%	\$ 3,000	0.00%	\$ 60,974,184
<b>Sub Total</b>	<b>\$ 19,076,086</b>	<b>13.67%</b>	<b>\$ 1,982,194</b>	<b>1.42%</b>	<b>\$ 24,527,825</b>	<b>17.58%</b>	<b>\$ 12,725,969</b>	<b>9.12%</b>	<b>\$ 139,535,625</b>
Business	\$ 2,632,374	17.77%	\$ 7,640,728	51.58%	\$ 580,009	3.92%	\$ 494,445	3.34%	\$ 14,812,349
Education & Human Service	\$ 1,929,072	16.70%	\$ 4,741,380	41.04%	\$ 750,106	6.49%	\$ 472,137	4.09%	\$ 11,553,115
Engineering & Computer Science	\$ 2,709,464	18.23%	\$ 7,474,598	50.29%	\$ 1,219,091	8.20%	\$ 478,330	3.22%	\$ 14,862,008
Lake Campus	\$ 922,762	10.80%	\$ 1,751,522	20.51%	\$ 740,153	8.67%	\$ 262,573	3.07%	\$ 8,541,028
Liberal Arts	\$ 4,439,095	18.28%	\$ 13,778,869	56.75%	\$ 805,926	3.32%	\$ 696,453	2.87%	\$ 24,280,109
Library	\$ 1,043,452	11.37%	\$ -	0.00%	\$ 2,290,110	24.95%	\$ 857,543	9.34%	\$ 9,179,393
Nursing	\$ 1,366,416	21.05%	\$ 3,350,158	51.60%	\$ 450,134	6.93%	\$ 429,541	6.62%	\$ 6,492,215
Professional Psychology	\$ 893,503	17.56%	\$ 1,956,659	38.46%	\$ 685,937	13.48%	\$ 326,021	6.41%	\$ 5,087,119
Graduate Studies	\$ 735,237	9.40%	\$ 429,202	5.49%	\$ 1,379,884	17.64%	\$ 305,272	3.90%	\$ 7,820,567
Science & Mathematics	\$ 5,413,990	20.86%	\$ 11,907,092	45.89%	\$ 1,492,457	5.75%	\$ 823,505	3.17%	\$ 25,949,725
<b>Sub Total</b>	<b>\$ 22,085,365</b>	<b>17.18%</b>	<b>\$ 53,030,208</b>	<b>41.24%</b>	<b>\$ 10,393,807</b>	<b>8.08%</b>	<b>\$ 5,145,819</b>	<b>4.00%</b>	<b>\$ 128,577,628</b>
<b>Total</b>	<b>\$ 41,161,451</b>	<b>15.35%</b>	<b>\$ 55,012,402</b>	<b>20.52%</b>	<b>\$ 34,921,632</b>	<b>13.02%</b>	<b>\$ 17,871,788</b>	<b>6.67%</b>	<b>\$ 268,113,253</b>
Medicine	\$ 5,847,075	17.25%	\$ 13,077,229	38.59%	\$ 3,278,484	9.67%	\$ 3,168,122	9.35%	\$ 33,891,319

Note: Gross Budget is shown net of Cost Recoveries.

**Wright State University**  
Budgeted Compensation as % of Total Gross Budget

DRAFT  
2010 Update  
6/28/10

**Fiscal Year 2009-10**

College/Unit	Benefits	% Gross	Budgeted	% Gross	Budgeted	% Gross	Budgeted	% Gross	Total Gross
	\$	Budget	Faculty	Budget	Unclassified	Budget	Classified	Budget	Gross Budget
President	\$ 379,543	16.56%	\$ 540,044	23.56%	\$ 311,080	13.57%	\$ 309,217	13.49%	\$ 2,292,593
Provost - Non Academic	\$ 4,831,627	14.12%	\$ 454,778	1.33%	\$ 8,610,367	25.16%	\$ 3,762,882	11.00%	\$ 34,219,944
UVCL	\$ 556,295	18.30%	\$ 143,988	4.74%	\$ 1,245,779	40.98%	\$ 209,723	6.90%	\$ 3,040,157
VP Business & Fiscal Affairs	\$ 5,784,250	13.91%	\$ -	0.00%	\$ 5,862,957	14.10%	\$ 6,846,382	16.46%	\$ 41,595,914
VP Student Affairs	\$ 2,993,933	25.19%	\$ 10,000	0.08%	\$ 5,560,720	46.79%	\$ 2,147,825	18.07%	\$ 11,884,193
VP University Advancement	\$ 1,195,068	22.62%	\$ -	0.00%	\$ 2,866,454	54.26%	\$ 530,822	10.05%	\$ 5,282,950
VP Curriculum & Instruction	\$ 1,225,097	16.92%	\$ 820,447	11.33%	\$ 2,110,492	29.15%	\$ 559,660	7.73%	\$ 7,241,086
Other Institutional	\$ 2,734,656	6.04%	\$ -	0.00%	\$ 3,000	0.01%	\$ 3,000	0.01%	\$ 45,260,361
Sub Total	\$ 19,700,469	13.06%	\$ 1,969,257	1.31%	\$ 26,570,849	17.62%	\$ 14,369,511	9.53%	\$ 150,817,198
Business	\$ 2,876,136	17.27%	\$ 7,846,890	47.12%	\$ 563,323	3.38%	\$ 512,906	3.08%	\$ 16,651,827
Education & Human Service	\$ 2,094,406	17.11%	\$ 4,762,574	38.91%	\$ 677,851	5.54%	\$ 579,613	4.73%	\$ 12,241,419
Engineering & Computer Science	\$ 2,772,718	19.19%	\$ 7,019,700	48.59%	\$ 1,272,918	8.81%	\$ 492,123	3.41%	\$ 14,446,635
Lake Campus	\$ 926,890	12.42%	\$ 1,666,469	22.34%	\$ 794,194	10.65%	\$ 251,147	3.37%	\$ 7,460,129
Liberal Arts	\$ 4,705,903	19.38%	\$ 13,516,885	55.67%	\$ 751,853	3.10%	\$ 700,618	2.89%	\$ 24,280,109
Library	\$ 1,076,539	11.69%	\$ -	0.00%	\$ 2,291,198	24.89%	\$ 943,705	10.25%	\$ 9,206,174
Nursing	\$ 1,398,652	20.76%	\$ 3,267,496	48.50%	\$ 440,673	6.54%	\$ 427,719	6.35%	\$ 6,736,540
Professional Psychology	\$ 969,947	19.56%	\$ 1,880,160	37.93%	\$ 747,655	15.08%	\$ 355,915	7.18%	\$ 4,957,570
Graduate Studies	\$ 720,977	9.39%	\$ 401,310	5.23%	\$ 1,293,260	16.85%	\$ 328,896	4.28%	\$ 7,676,903
Science & Mathematics	\$ 4,556,375	17.54%	\$ 11,909,743	45.84%	\$ 1,478,560	5.69%	\$ 844,558	3.25%	\$ 25,980,655
Sub Total	\$ 22,098,543	17.05%	\$ 52,271,227	40.32%	\$ 10,311,485	7.95%	\$ 5,437,200	4.19%	\$ 129,637,961
Total	\$ 41,799,012	14.90%	\$ 54,240,484	19.34%	\$ 36,882,334	13.15%	\$ 19,806,711	7.06%	\$ 280,455,159
Medicine	\$ 6,454,727	19.05%	\$ 13,084,865	38.61%	\$ 3,172,592	9.36%	\$ 3,689,743	10.89%	\$ 33,891,319

Note: Gross Budget is shown net of Cost Recoveries.

**Wright State University**  
Budgeted Compensation as % Total Gross Budget

**DRAFT**  
2009 Update  
8/5/09

**Fiscal Year 2008-09**

College/Unit	Benefits		Budgeted Faculty		Budgeted Unclassified		Budgeted Classified		Total Gross Budget
	\$	% Gross Budget	\$	% Gross Budget	\$	% Gross Budget	\$	% Gross Budget	
President	\$ 308,974	15.45%	\$ 518,373	25.92%	\$ 176,067	8.81%	\$ 296,821	14.84%	\$ 1,999,569
Provost - Non Academic	\$ 4,918,247	21.56%	\$ 583,971	2.56%	\$ 9,348,712	40.97%	\$ 3,501,066	15.34%	\$ 22,816,954
VP Business & Fiscal Affairs	\$ 5,471,389	13.26%	\$ -	0.00%	\$ 5,583,893	13.53%	\$ 7,022,298	17.02%	\$ 41,260,939
VP Student Affairs	\$ 2,875,954	22.06%	\$ -	0.00%	\$ 5,353,981	41.08%	\$ 2,023,300	15.52%	\$ 13,034,239
VP University Advancement	\$ 924,885	19.82%	\$ -	0.00%	\$ 2,253,349	48.28%	\$ 426,773	9.14%	\$ 4,667,432
VP Curriculum & Instruction	\$ 1,456,811	18.10%	\$ 775,536	9.64%	\$ 2,274,902	28.27%	\$ 987,442	12.27%	\$ 8,048,137
Other Institutional	\$ 1,648,129	5.64%	\$ -	0.00%	\$ 5,198	0.02%	\$ 3,000	0.01%	\$ 29,204,979
<b>Sub Total</b>	<b>\$ 17,604,390</b>	<b>14.55%</b>	<b>\$ 1,877,880</b>	<b>1.55%</b>	<b>\$ 24,996,102</b>	<b>20.65%</b>	<b>\$ 14,260,698</b>	<b>11.78%</b>	<b>\$ 121,032,249</b>
Business	\$ 2,630,392	15.44%	\$ 7,509,126	44.07%	\$ 611,271	3.59%	\$ 497,489	2.92%	\$ 17,038,783
Education & Human Service	\$ 1,984,970	15.67%	\$ 4,816,453	38.03%	\$ 714,543	5.64%	\$ 583,569	4.61%	\$ 12,664,256
Engineering & Computer Science	\$ 2,588,874	17.83%	\$ 6,848,458	47.16%	\$ 1,272,918	8.77%	\$ 482,822	3.32%	\$ 14,522,073
Lake Campus	\$ 937,999	12.04%	\$ 1,662,138	21.33%	\$ 834,512	10.71%	\$ 270,664	3.47%	\$ 7,791,649
Liberal Arts	\$ 4,248,353	17.68%	\$ 13,135,936	54.68%	\$ 761,321	3.17%	\$ 632,145	2.63%	\$ 24,024,278
Library	\$ 1,058,317	11.48%	\$ -	0.00%	\$ 2,229,213	24.18%	\$ 952,988	10.34%	\$ 9,219,212
Nursing	\$ 1,251,151	19.34%	\$ 3,170,030	48.99%	\$ 423,711	6.55%	\$ 403,283	6.23%	\$ 6,470,274
Professional Psychology	\$ 880,466	18.43%	\$ 1,827,822	38.26%	\$ 714,562	14.96%	\$ 310,349	6.50%	\$ 4,777,933
Graduate Studies	\$ 660,514	9.39%	\$ 379,912	5.40%	\$ 1,229,317	17.47%	\$ 310,402	4.41%	\$ 7,034,855
Science & Mathematics	\$ 4,179,684	16.11%	\$ 11,782,148	45.40%	\$ 1,286,736	4.96%	\$ 892,625	3.44%	\$ 25,951,281
<b>Sub Total</b>	<b>\$ 20,420,719</b>	<b>15.77%</b>	<b>\$ 51,132,024</b>	<b>39.49%</b>	<b>\$ 10,078,103</b>	<b>7.78%</b>	<b>\$ 5,336,336</b>	<b>4.12%</b>	<b>\$ 129,494,594</b>
<b>Total</b>	<b>\$ 38,025,109</b>	<b>15.18%</b>	<b>\$ 53,009,904</b>	<b>21.16%</b>	<b>\$ 35,074,205</b>	<b>14.00%</b>	<b>\$ 19,597,035</b>	<b>7.82%</b>	<b>\$ 250,526,843</b>
Medicine	\$ 5,806,577	12.30%	\$ 13,018,624	27.57%	\$ 2,726,198	5.77%	\$ 3,194,921	6.77%	\$ 47,225,898

Note: Gross Budget is shown net of Cost Recoveries.

**Wright State University**  
Budgeted Compensation as % of Total Gross Budget

**DRAFT**  
2008 Update  
9/30/08

**Fiscal Year 2007-08 \***

College/Unit	Benefits	% Gross	Budgeted	% Gross	Budgeted	% Gross	Budgeted	% Gross	Total Gross Budget
	\$	Budget	Faculty \$	Budget	Unclassified \$	Budget	Classified \$	Budget	
President	\$ 300,028	15.15%	\$ 501,149	25.30%	\$ 164,375	8.30%	\$ 263,878	13.32%	\$ 1,980,823
Provost - Non Academic	\$ 5,020,330	15.33%	\$ 558,152	1.70%	\$ 8,800,769	26.87%	\$ 3,262,183	9.96%	\$ 32,757,048
VP Business & Fiscal Affairs	\$ 5,240,112	12.95%	\$ -	0.00%	\$ 5,179,942	12.80%	\$ 7,011,318	17.32%	\$ 40,474,496
VP Student Affairs	\$ 2,853,301	21.82%	\$ -	0.00%	\$ 5,008,727	38.30%	\$ 1,952,243	14.93%	\$ 13,078,465
VP University Advancement	\$ 1,039,048	22.19%	\$ -	0.00%	\$ 2,224,321	47.50%	\$ 404,886	8.65%	\$ 4,682,532
VP Curriculum & Instruction	\$ 1,408,407	18.36%	\$ 664,507	8.66%	\$ 2,142,835	27.94%	\$ 911,478	11.88%	\$ 7,669,933
Other Institutional	\$ 3,391	0.01%	\$ -	0.00%	\$ 5,198	0.02%	\$ 3,000	0.01%	\$ 27,230,665
<b>Sub Total</b>	<b>\$ 15,864,617</b>	<b>12.41%</b>	<b>\$ 1,723,808</b>	<b>1.35%</b>	<b>\$ 23,526,167</b>	<b>18.40%</b>	<b>\$ 13,808,986</b>	<b>10.80%</b>	<b>\$ 127,873,962</b>
Business	\$ 2,285,849	16.17%	\$ 7,201,316	50.94%	\$ 573,949	4.06%	\$ 521,003	3.69%	\$ 14,137,368
Education & Human Service	\$ 1,684,840	14.57%	\$ 4,551,680	39.37%	\$ 706,984	6.12%	\$ 555,998	4.81%	\$ 11,560,373
Engineering & Computer Science	\$ 2,300,361	17.11%	\$ 6,480,592	48.19%	\$ 1,198,868	8.92%	\$ 337,959	2.51%	\$ 13,446,654
Lake Campus	\$ 852,958	10.87%	\$ 1,585,156	20.20%	\$ 839,528	10.70%	\$ 290,615	3.70%	\$ 7,847,754
Liberal Arts	\$ 3,869,509	15.94%	\$ 12,930,874	53.26%	\$ 761,321	3.14%	\$ 632,145	2.60%	\$ 24,277,916
Library	\$ 1,227,004	13.27%	\$ -	0.00%	\$ 2,172,326	23.49%	\$ 995,716	10.77%	\$ 9,248,968
Nursing	\$ 1,084,527	16.17%	\$ 2,835,389	42.28%	\$ 422,751	6.30%	\$ 424,379	6.33%	\$ 6,705,665
Professional Psychology	\$ 757,524	17.45%	\$ 1,553,939	35.80%	\$ 553,722	12.76%	\$ 341,471	7.87%	\$ 4,340,539
Graduate Studies	\$ 585,596	8.80%	\$ 184,912	2.78%	\$ 1,055,283	15.86%	\$ 286,086	4.30%	\$ 6,654,391
Science & Mathematics	\$ 3,782,112	14.66%	\$ 11,369,130	44.08%	\$ 1,275,112	4.94%	\$ 867,136	3.36%	\$ 25,794,011
<b>Sub Total</b>	<b>\$ 18,430,280</b>	<b>14.86%</b>	<b>\$ 48,692,988</b>	<b>39.26%</b>	<b>\$ 9,559,844</b>	<b>7.71%</b>	<b>\$ 5,252,508</b>	<b>4.24%</b>	<b>\$ 124,013,639</b>
<b>Total</b>	<b>\$ 34,294,897</b>	<b>13.62%</b>	<b>\$ 50,416,796</b>	<b>20.02%</b>	<b>\$ 33,086,011</b>	<b>13.14%</b>	<b>\$ 19,061,494</b>	<b>7.57%</b>	<b>\$ 251,887,601</b>
Medicine	\$ 5,346,817	9.29%	\$ 12,233,360	21.27%	\$ 2,447,729	4.26%	\$ 2,961,533	5.15%	\$ 57,524,541

Note: Gross Budget is shown net of Cost Recoveries.

\* Please note organizational structures change year to year.



**Wright State University**  
Budgeted Compensation as % of Total Gross Budget

**DRAFT**  
2008 Update  
9/30/08

**Fiscal Year 2006-07**

College/Unit	Benefits \$	% Gross Budget	Budgeted Faculty \$	% Gross Budget	Budgeted Unclassified \$	% Gross Budget	Budgeted Classified \$	% Gross Budget	Total Gross Budget
President	\$ 258,634	15.53%	\$ 311,631	18.71%	\$ 258,797	15.54%	\$ 243,614	14.63%	\$ 1,665,648
Provost - Non Academic	\$ 2,454,995	35.02%	\$ 610,339	8.71%	\$ 5,551,206	79.20%	\$ 1,849,276	26.38%	\$ 7,009,508
VP Business & Fiscal Affairs	\$ 4,534,528	11.80%	\$ -	0.00%	\$ 4,822,714	12.55%	\$ 6,710,443	17.46%	\$ 38,429,712
VP Student Affairs/Enrollment	\$ 2,889,654	19.14%	\$ -	0.00%	\$ 5,911,473	39.15%	\$ 2,251,467	14.91%	\$ 15,099,802
VP University Advancement	\$ 797,010	18.80%	\$ -	0.00%	\$ 1,954,698	46.11%	\$ 390,056	9.20%	\$ 4,239,271
VP Curriculum & Instruction	\$ 1,906,936	16.36%	\$ 481,590	4.13%	\$ 3,471,766	29.78%	\$ 1,541,517	13.22%	\$ 11,658,199
Other Institutional	\$ 2,771	0.01%	\$ -	0.00%	\$ 5,198	0.02%	\$ 3,000	0.01%	\$ 30,879,666
Sub Total	\$ 12,844,528	11.79%	\$ 1,403,560	1.29%	\$ 21,975,852	20.16%	\$ 12,989,373	11.92%	\$ 108,981,806
Business	\$ 2,090,219	16.01%	\$ 6,365,106	48.74%	\$ 548,175	4.20%	\$ 542,161	4.15%	\$ 13,058,313
Education & Human Service	\$ 1,448,688	13.45%	\$ 3,907,802	36.27%	\$ 562,664	5.22%	\$ 624,703	5.80%	\$ 10,772,729
Engineering & Computer Science	\$ 1,967,680	15.70%	\$ 5,595,436	44.64%	\$ 1,075,778	8.58%	\$ 368,592	2.94%	\$ 12,533,257
Lake Campus	\$ 756,573	10.31%	\$ 1,460,038	19.90%	\$ 762,643	10.39%	\$ 293,553	4.00%	\$ 7,337,974
Liberal Arts	\$ 3,540,574	16.36%	\$ 11,605,670	53.62%	\$ 746,405	3.45%	\$ 606,793	2.80%	\$ 21,642,871
Library	\$ 1,110,540	12.50%	\$ -	0.00%	\$ 2,122,382	23.88%	\$ 978,868	11.01%	\$ 8,887,723
Nursing	\$ 878,636	17.71%	\$ 2,251,768	45.38%	\$ 338,464	6.82%	\$ 396,793	8.00%	\$ 4,962,478
Professional Psychology	\$ 708,824	16.36%	\$ 1,501,877	34.67%	\$ 442,335	10.21%	\$ 381,940	8.82%	\$ 4,332,172
Graduate Studies	\$ 450,260	7.38%	\$ 175,959	2.88%	\$ 904,890	14.83%	\$ 263,531	4.32%	\$ 6,103,323
Science & Mathematics	\$ 3,522,756	14.88%	\$ 10,506,388	44.38%	\$ 1,231,897	5.20%	\$ 842,162	3.56%	\$ 23,673,647
Sub Total	\$ 16,474,750	14.54%	\$ 43,370,044	38.28%	\$ 8,735,633	7.71%	\$ 5,299,096	4.68%	\$ 113,304,487
Total	\$ 29,319,278	13.19%	\$ 44,773,604	20.14%	\$ 30,711,485	13.82%	\$ 18,288,469	8.23%	\$ 222,286,293
Medicine	\$ 5,052,307	17.72%	\$ 11,070,607	38.83%	\$ 2,637,030	9.25%	\$ 2,228,599	7.82%	\$ 28,511,984

Note: Gross Budget is shown net of Cost Recoveries.

1. Staffing data by instructional and non-instructional colleges and divisions from FY 2007 to FY 2011
  - Faculty/staff FTE and ratio of student FTE to faculty/staff

**Wright State University**  
Ratios of Faculty/Staff FTE and Student FTE

**DRAFT**  
2011 Update  
4/12/11

	<b>Total Faculty FTE (g+j+k+l)</b>	<b>Student FTE per Total Faculty FTE</b>	<b>Total Full Time Faculty FTE (a)</b>	<b>Student FTE per Total Full Time Faculty FTE (b)</b>	<b>Tenure-line Faculty FTE (c)</b>	<b>Student FTE per Tenure-line Faculty FTE (d)</b>	<b>Non Tenure-line Faculty FTE (e)</b>	<b>Student FTE per Non Tenure-line Faculty FTE (f)</b>	<b>Adjunct FTE (g)</b>	<b>Grad Teach Asst. FTE (h)</b>	<b>All Staff FTE (i)</b>	<b>Student FTE per All Staff FTE (j)</b>	<b>Clsfd. Staff FTE (k)</b>	<b>Student FTE per Clsfd. Staff FTE (l)</b>	<b>Unclsfd. Staff FTE (m)</b>	<b>Student FTE per Unclsfd. Staff FTE (n)</b>	<b>Fall Term Total Student FTE (SCH/15) (o)</b>	<b>% GR SCH (p)</b>
<b>College Staffing Data (FY2007 - FY2011)</b>																		
<b>Liberal Arts</b>																		
FY 2007	236.0	19.1	190.3	23.7	138.8	32.5	51.5	87.6	36.8	8.9	33.6	134.3	21.3	211.9	12.3	366.9	4,513	3%
FY 2008	260.8	17.6	215.5	21.3	160.0	28.7	55.5	82.7	38.7	6.6	35.8	128.3	23.0	199.7	12.8	358.8	4,592	4%
FY 2009	277.3	17.5	216.5	22.4	162.0	29.9	54.5	89.0	49.2	11.6	37.2	130.3	23.9	202.7	13.3	365.0	4,851	3%
FY 2010	278.0	18.0	217.5	23.0	162.0	30.9	55.5	90.2	51.9	8.6	37.8	132.5	23.0	217.7	14.8	338.6	5,008	3%
FY 2011	289.3	18.0	219.0	23.7	163.3	31.8	55.8	93.2	61.3	8.9	38.8	134.0	23.0	225.9	15.8	329.2	5,197	3%
<b>Business</b>																		
FY 2007	74.9	20.7	64.3	24.1	55.3	28.0	9.0	172.0	10.6	0.0	26.6	58.2	16.5	93.8	10.1	153.3	1,548	18%
FY 2008	82.9	18.8	71.3	21.9	60.3	25.9	11.0	141.8	11.6	0.0	28.6	54.5	17.5	89.1	11.1	140.5	1,559	18%
FY 2009	80.3	19.6	72.3	21.7	62.3	25.2	10.0	157.0	7.9	0.0	26.4	59.6	17.3	90.9	9.1	172.9	1,570	19%
FY 2010	78.2	20.7	71.8	22.6	60.8	26.7	11.0	147.6	6.4	0.0	26.9	60.4	17.8	91.3	9.1	178.8	1,623	22%
FY 2011	80.2	19.6	66.8	23.6	56.8	27.7	10.0	157.5	13.3	0.0	26.9	58.7	16.3	96.8	10.6	148.9	1,575	20%
<b>Education</b>																		
FY 2007	90.9	17.0	65.1	23.7	54.1	28.6	11.0	140.5	25.5	0.3	30.8	50.2	20.0	77.3	10.8	143.1	1,546	38%
FY 2008	100.4	14.2	72.1	19.8	60.1	23.8	12.0	119.0	28.3	0.0	33.8	42.3	19.0	75.2	14.8	96.5	1,428	36%
FY 2009	113.1	12.4	72.8	19.2	59.8	23.4	13.0	107.5	40.3	0.0	33.5	41.7	20.0	69.9	13.5	103.5	1,398	37%
FY 2010	105.5	13.3	71.1	19.7	55.6	25.2	15.5	90.3	34.4	0.0	33.7	41.5	18.0	77.7	15.7	89.1	1,399	38%
FY 2011	105.8	13.9	66.8	22.0	48.3	30.4	18.5	79.3	39.0	0.0	32.0	45.8	16.0	91.6	16.0	91.7	1,467	37%
<b>Science &amp; Math</b>																		
FY 2007	160.6	19.6	125.2	25.1	112.2	28.0	13.0	241.8	12.3	23.1	47.8	65.7	24.5	128.3	23.3	134.9	3,143	8%
FY 2008	185.5	16.7	148.1	21.0	129.1	24.1	19.0	163.5	17.9	19.5	51.6	60.2	28.0	110.9	23.6	131.6	3,106	8%
FY 2009	190.7	17.0	147.1	22.1	129.1	25.1	18.0	180.2	18.2	25.4	51.8	62.6	26.5	122.4	25.3	128.0	3,244	8%
FY 2010	187.6	18.4	146.8	23.5	128.8	26.8	18.0	191.4	15.0	25.7	51.3	67.1	26.1	132.0	25.2	136.6	3,446	7%
FY 2011	192.5	19.1	147.9	24.8	129.9	28.3	18.0	204.0	15.5	29.0	50.6	72.6	24.3	151.4	26.3	139.4	3,671	7%

Note: In FY 2007 vacancies are not included in the FTE count. In all other years the FTE count does include vacancies.

Data sources for Academic Faculty FTE:

Tenure-line Faculty, Full-Time Non Tenure-line Faculty, Classified Staff, and Unclassified Staff FTE are budgeted FTE (unrestricted base budget).

Adjunct FTE is calculated using the SSN's of Adjuncts from HR and merged with HEI files for Course Credit Hours (CCH) taught. 12 CCH equals 1 FTE.

Teaching Assistant FTE is based on HEI files. Each Graduate Teaching Assistant equals .33 FTE.

All Faculty and Staff FTE are listed according to where the FTE was expensed.

**Wright State University**  
Ratios of Faculty/Staff FTE and Student FTE

**DRAFT**  
2011 Update  
4/12/11

	<b>Total Faculty FTE (g+j+k+l)</b>	<b>Student FTE per Total Faculty FTE</b>	<b>Total Full Time Faculty FTE</b>	<b>Student FTE per Total Full Time Faculty FTE</b>	<b>Tenure-line Faculty FTE</b>	<b>Student FTE per Tenure-line Faculty FTE</b>	<b>Non Tenure-line Faculty FTE</b>	<b>Student FTE per Non Tenure-line Faculty FTE</b>	<b>Adjunct FTE</b>	<b>Grad Teach Asst. FTE</b>	<b>All Staff FTE</b>	<b>Student FTE per All Staff FTE</b>	<b>Clsfd. Staff FTE</b>	<b>Student FTE per Clsfd. Staff FTE</b>	<b>Unclsfd. Staff FTE</b>	<b>Student FTE per Unclsfd. Staff FTE</b>	<b>Fall Term Total Student FTE (SCH/15)</b>	<b>% GR SCH</b>
<b>College Staffing Data (continued)</b>																		
<b>Engineering &amp; Computer Science</b>																		
FY 2007	85.9	10.9	64.7	14.5	58.7	16.0	6.0	156.2	11.6	9.6	38.3	24.5	15.4	60.8	22.9	40.9	937	32%
FY 2008	91.6	11.5	74.5	14.2	67.5	15.6	7.0	150.9	12.5	4.6	41.1	25.7	17.0	62.1	24.1	43.8	1,056	32%
FY 2009	93.7	11.3	75.2	14.1	68.2	15.6	7.0	151.8	12.9	5.6	39.1	27.2	17.1	62.1	22.0	48.3	1,063	29%
FY 2010	96.3	11.4	78.4	14.0	70.4	15.6	8.0	137.0	10.3	7.6	39.7	27.6	17.3	63.3	22.4	48.9	1,096	26%
FY 2011	92.6	12.6	75.8	15.4	68.8	16.9	7.0	166.4	9.9	6.9	37.7	30.9	15.8	74.0	21.9	53.1	1,165	24%
<b>Nursing</b>																		
FY 2007	36.3	15.0	32.7	16.6	21.0	25.9	11.7	46.6	3.6	0.0	15.4	35.3	8.9	61.0	6.5	83.5	544	18%
FY 2008	45.6	12.1	44.5	12.4	24.5	22.5	20.0	27.6	1.1	0.0	21.5	25.7	14.0	39.4	7.5	73.6	552	18%
FY 2009	46.0	12.3	45.5	12.4	25.5	22.1	20.0	28.2	0.5	0.0	23.4	24.1	13.9	40.6	9.5	59.3	564	17%
FY 2010	49.6	12.0	46.5	12.8	24.5	24.3	22.0	27.0	3.1	0.0	23.4	25.4	13.9	42.8	9.5	62.6	596	19%
FY 2011	49.5	12.4	48.8	12.6	23.9	25.7	24.9	24.7	0.7	0.0	22.2	27.6	13.7	44.8	8.5	72.2	614	19%
Note: Student Health Services (CONHS) classified and unclassified staff FTE are included in Nursing.																		
Nursing's adjunct FTE is understated in recent years due to a switch to non-credit bearing clinical sections which are taught primarily by adjuncts. (12 CCH = 1 Adjunct FTE)																		
<b>Professional Psychology</b>																		
FY 2007	15.0	8.2	15.0	8.2	15.0	8.2	0.0	-	0.0	0.0	18.3	6.7	10.0	12.3	8.3	14.8	123	100%
FY 2008	19.9	5.8	18.0	6.4	18.0	6.4	0.0	-	1.9	0.0	21.3	5.4	11.0	10.5	10.3	11.2	116	100%
FY 2009	22.0	4.9	20.0	5.3	19.0	5.6	1.0	106.9	2.0	0.0	23.5	4.6	12.0	8.9	11.5	9.3	107	100%
FY 2010	22.1	5.1	20.0	5.7	18.0	6.3	2.0	56.8	2.1	0.0	23.7	4.8	12.0	9.5	11.7	9.7	114	100%
FY 2011	21.3	5.2	20.0	5.5	18.0	6.1	2.0	54.7	1.3	0.0	22.0	5.0	12.0	9.1	10.0	10.9	109	100%
<b>University College (Instructional)</b>																		
FY 2007	12.3	31.0	0.0	-	0.0	-	0.0	-	5.3	6.9	6.6	57.5	1.5	251.6	5.1	74.5	380	0%
FY 2008	10.7	44.8	0.0	-	0.0	-	0.0	-	10.7	0.0	7.1	67.5	2.0	239.5	5.1	93.9	479	0%
FY 2009	12.0	38.4	0.0	-	0.0	-	0.0	-	12.0	0.0	6.0	77.8	1.5	306.4	4.4	104.2	463	0%
FY 2010	11.2	44.5	0.0	-	0.0	-	0.0	-	11.2	0.0	6.0	83.9	1.5	330.4	4.4	112.4	499	0%
FY 2011	14.0	40.2	0.0	-	0.0	-	0.0	-	14.0	0.0	6.2	91.6	1.5	373.1	4.6	121.4	563	0%
<b>Lake Campus (Instructional)</b>																		
FY 2007	39.9	14.9	23.7	25.0	20.7	28.6	3.0	197.6	16.2	0.0	5.8	102.2	2.8	211.7	3.0	197.6	593	6%
FY 2008	47.7	12.2	26.7	21.7	22.7	25.5	4.0	145.0	21.0	0.0	6.8	85.9	2.8	210.9	4.0	145.0	580	9%
FY 2009	41.0	16.4	26.7	25.2	23.7	28.4	3.0	224.0	14.3	0.0	6.8	99.6	2.8	244.4	4.0	168.0	672	7%
FY 2010	41.9	20.5	26.7	32.2	21.7	39.7	5.0	171.9	15.2	0.0	6.8	127.4	2.8	312.6	4.0	214.9	860	5%
FY 2011	49.2	19.5	26.7	35.9	21.7	44.1	5.0	191.3	22.5	0.0	6.4	150.4	2.4	405.3	4.0	239.1	957	3%

Note: In FY 2007 vacancies are not included in the FTE count. In all other years the FTE count does include vacancies.

**Wright State University**  
Ratios of Faculty/Staff FTE and Student FTE

**DRAFT**  
2011 Update  
4/12/11

	<b>Total Faculty FTE</b> (g+j+k+l)	Student FTE per Total Faculty FTE	<b>Total Full Time Faculty FTE</b>	Student FTE per Total Full Time Faculty FTE	<b>Tenure-line Faculty FTE</b>	Student FTE per Tenure-line Faculty FTE	<b>Non Tenure-line Faculty FTE</b>	Student FTE per Non Tenure-line Faculty FTE	<b>Adjunct FTE</b>	<b>Grad Teach Asst. FTE</b>	<b>All Staff FTE</b>	Student FTE per All Staff FTE	<b>Clsfd. Staff FTE</b>	Student FTE per Clsfd. Staff FTE	<b>Unclsfd. Staff FTE</b>	Student FTE per Unclsfd. Staff FTE	Fall Term Total Student FTE (SCH/15)	% GR SCH
<b>College Staffing Data (continued)</b>																		
<b>Main Campus (excluding SoM, SoPP &amp; University College-Instructional)</b>																		
FY 2007	684.5	17.9	542.3	22.6	440.1	27.8	102.2	119.7	100.3	41.9	192.5	63.5	106.6	114.7	85.9	142.4	12,231	14%
FY 2008	766.8	16.0	626.0	19.6	501.5	24.5	124.5	98.8	110.1	30.7	212.4	57.9	118.5	103.8	93.9	130.9	12,294	13%
FY 2009	801.0	15.8	629.4	20.2	506.8	25.0	122.6	103.5	129.1	42.6	211.5	60.0	118.7	106.9	92.7	136.9	12,690	13%
FY 2010	795.2	16.6	632.2	20.8	502.1	26.2	130.1	101.3	121.1	41.9	212.8	61.9	116.1	113.4	96.7	136.2	13,168	13%
FY 2011	809.8	16.9	625.2	21.9	491.0	27.9	134.1	102.1	139.8	44.9	208.1	65.8	109.0	125.6	99.1	138.1	13,690	12%
<b>Main Campus (excluding SoM)</b>																		
FY 2007	711.7	17.9	557.3	22.8	455.1	28.0	102.2	124.6	105.6	48.8	217.4	58.6	118.1	107.8	99.3	128.2	12,733	14%
FY 2008	797.4	16.2	644.0	20.0	519.5	24.8	124.5	103.5	122.7	30.7	240.8	53.5	131.5	98.0	109.3	117.9	12,889	14%
FY 2009	835.1	15.9	649.4	20.4	525.8	25.2	123.6	107.3	143.1	42.6	240.9	55.0	132.3	100.3	108.7	122.0	13,259	13%
FY 2010	828.5	16.6	652.2	21.1	520.1	26.5	132.1	104.4	134.4	41.9	242.5	56.8	129.6	106.3	112.8	122.2	13,781	13%
FY 2011	845.1	17.0	645.2	22.3	509.0	28.2	136.1	105.5	155.0	44.9	236.3	60.8	122.5	117.2	113.8	126.2	14,363	13%
<b>Total University (excluding SoM)</b>																		
FY 2007	751.6	17.7	581.0	22.9	475.8	28.0	105.2	126.7	121.8	48.8	223.2	59.7	120.9	110.2	102.3	130.3	13,326	14%
FY 2008	845.1	15.9	670.7	20.1	542.2	24.8	128.5	104.8	143.7	30.7	247.6	54.4	134.3	100.3	113.3	118.9	13,469	14%
FY 2009	876.1	15.9	676.0	20.6	549.5	25.4	126.6	110.1	157.5	42.6	247.7	56.3	135.0	103.2	112.7	123.7	13,931	13%
FY 2010	870.4	16.8	678.8	21.6	541.8	27.0	137.1	106.8	149.6	41.9	249.2	58.7	132.4	110.6	116.8	125.3	14,641	13%
FY 2011	894.2	17.1	671.8	22.8	530.7	28.9	141.1	108.6	177.5	44.9	242.7	63.1	124.9	122.7	117.8	130.1	15,319	12%

Note: In FY 2007 vacancies are not included in the FTE count. In all other years the FTE count does include vacancies.

**Wright State University**  
Ratios of Faculty/Staff FTE and Student FTE

**DRAFT**  
2011 Update  
4/12/11

	Total Faculty FTE (g+j+k+l)	Student FTE per Total Faculty FTE	Total Full Time Faculty FTE	Student FTE per Total Full Time Faculty FTE	Tenure-line Faculty FTE	Student FTE per Tenure-line Faculty FTE	Non Tenure-line Faculty FTE	Student FTE per Non Tenure-line Faculty FTE	Adjunct FTE	Grad Teach Asst. FTE	All Staff FTE	Student FTE per All Staff FTE	Clsfd. Staff FTE	Student FTE per Clsfd. Staff FTE	Unclsfd. Staff FTE	Student FTE per Unclsfd. Staff FTE	Fall Term Total Student FTE (SCH/15)	% GR SCH
<b>Administrative Staffing Data (FY2007 - FY2011)</b>																		
<b>VP Advancement</b>																		
FY 2007	0.0	-	0.0	-	0.0	-	0.0	-	0.0	0.0	46.4	274.4	12.0	1061.1	34.4	370.0	12,733	14%
FY 2008	0.0	-	0.0	-	0.0	-	0.0	-	0.0	0.0	28.8	447.5	9.2	1401.0	19.6	657.6	12,889	14%
FY 2009	0.0	-	0.0	-	0.0	-	0.0	-	0.0	0.0	34.7	382.6	11.0	1205.4	23.7	560.4	13,259	13%
FY 2010	0.0	-	0.0	-	0.0	-	0.0	-	0.0	0.0	33.2	415.7	10.0	1378.1	23.2	595.3	13,781	13%
FY 2011	0.0	-	0.0	-	0.0	-	0.0	-	0.0	0.0	38.4	374.4	9.4	1524.7	28.9	496.3	14,363	13%
<b>VP Business &amp; Fiscal Affairs</b>																		
FY 2007	0.0	-	0.0	-	0.0	-	0.0	-	0.0	0.0	303.7	41.9	221.2	57.6	82.5	154.3	12,733	14%
FY 2008	0.0	-	0.0	-	0.0	-	0.0	-	0.0	0.0	318.1	40.5	231.0	55.8	87.1	148.1	12,889	14%
FY 2009	0.0	-	0.0	-	0.0	-	0.0	-	0.0	0.0	317.5	41.8	228.5	58.0	89.0	149.0	13,259	13%
FY 2010	0.0	-	0.0	-	0.0	-	0.0	-	0.0	0.0	316.5	43.5	226.5	60.9	90.0	153.1	13,781	13%
FY 2011	0.0	-	0.0	-	0.0	-	0.0	-	0.0	0.0	312.5	46.0	226.0	63.6	86.5	166.0	14,363	13%
<b>VP Student Affairs &amp; Enrollment Services</b>																		
FY 2007	0.0	-	0.0	-	0.0	-	0.0	-	0.0	0.0	188.9	67.4	77.1	165.2	111.8	113.9	12,733	14%
<b>VP Student Affairs</b>																		
FY 2008	0.0	-	0.0	-	0.0	-	0.0	-	0.0	0.0	165.7	77.8	63.0	204.6	102.7	125.5	12,889	14%
FY 2009	0.0	-	0.0	-	0.0	-	0.0	-	0.0	0.0	166.7	79.5	63.3	209.5	103.4	128.2	13,259	13%
FY 2010	0.0	-	0.0	-	0.0	-	0.0	-	0.0	0.0	165.8	83.1	63.0	218.6	102.8	134.1	13,781	13%
FY 2011	0.0	-	0.0	-	0.0	-	0.0	-	0.0	0.0	161.8	88.8	59.8	240.3	102.0	140.8	14,363	13%
<b>Enrollment Management Division**</b>																		
FY 2008	0.0	-	0.0	-	0.0	-	0.0	-	0.0	0.0	64.8	198.9	32.8	393.0	32.0	402.8	12,889	14%
FY 2009	0.0	-	0.0	-	0.0	-	0.0	-	0.0	0.0	67.8	195.6	31.8	417.0	36.0	368.3	13,259	13%
FY 2010	0.0	-	0.0	-	0.0	-	0.0	-	0.0	0.0	68.8	200.3	31.8	433.4	37.0	372.5	13,781	13%
FY 2011	0.5	28725.1	0.5	28725.1	0.5	-	0.0	-	0.0	0.0	76.0	189.0	32.0	448.8	44.0	326.4	14,363	13%
<b>President</b>																		
FY 2007	2.0	6366.7	2.0	6366.7	2.0	6366.7	0.0	-	0.0	0.0	7.7	1651.5	6.5	1956.0	1.2	10611.1	12,733	14%
FY 2008	2.0	6444.5	2.0	6444.5	2.0	6444.5	0.0	-	0.0	0.0	10.7	1204.6	8.5	1516.3	2.2	5858.6	12,889	14%
FY 2009	2.0	6629.6	2.0	6629.6	1.0	13259.3	1.0	13259.3	0.0	0.0	9.7	1365.5	7.5	1765.5	2.2	6026.9	13,259	13%
FY 2010	2.0	6890.5	2.0	6890.5	1.0	13781.0	1.0	13781.0	0.0	0.0	10.2	1351.1	8.0	1722.6	2.2	6264.1	13,781	13%
FY 2011	2.0	7181.3	2.0	7181.3	1.0	14362.5	1.0	14362.5	0.0	0.0	17.7	811.0	8.5	1687.7	9.2	1561.1	14,363	13%
<b>Library</b>																		
FY 2007	0.0	-	0.0	-	0.0	-	0.0	-	0.0	0.0	68.3	186.4	30.6	416.1	37.7	337.8	12,733	14%
FY 2008	0.0	-	0.0	-	0.0	-	0.0	-	0.0	0.0	72.2	178.5	31.1	414.4	41.1	313.6	12,889	14%
FY 2009	0.0	-	0.0	-	0.0	-	0.0	-	0.0	0.0	70.7	187.6	29.6	447.5	41.1	323.0	13,259	13%
FY 2010	0.0	-	0.0	-	0.0	-	0.0	-	0.0	0.0	70.7	195.0	29.6	465.1	41.1	335.7	13,781	13%
FY 2011	0.0	-	0.0	-	0.0	-	0.0	-	0.0	0.0	68.8	208.8	27.6	519.8	41.2	348.9	14,363	13%

Note: In FY 2007 vacancies are not included in the FTE count. In all other years the FTE count does include vacancies.

\*\* In FY 2008 the Enrollment Management Division was created from Orgn's that were in the VP Student Affairs & Enrollment Services (41.8 FTE) and the VP Curriculum & Instruction (22 FTE) category in FY 2007.

**Wright State University**  
Ratios of Faculty/Staff FTE and Student FTE

**DRAFT**  
2011 Update  
4/12/11

	Total Faculty FTE (g+j+k+l)	Student FTE per Total Faculty FTE	Total Full Time Faculty FTE	Student FTE per Total Full Time Faculty FTE	Tenure-line Faculty FTE	Student FTE per Tenure-line Faculty FTE	Non Tenure-line Faculty FTE	Student FTE per Non Tenure-line Faculty FTE	Adjunct FTE	Grad Teach Asst. FTE	All Staff FTE	Student FTE per All Staff FTE	Clsfd. Staff FTE	Student FTE per Clsfd. Staff FTE	Unclsfd. Staff FTE	Student FTE per Unclsfd. Staff FTE	Fall Term Total Student FTE (SCH/15)	% GR SCH
<b>Administrative Staffing Data (continued)</b>																		
<b>Research &amp; Graduate Studies</b>																		
FY 2007	2.0	6366.7	2.0	6366.7	2.0	6366.7	0.0	-	0.0	0.0	25.0	509.3	8.0	1591.7	17.0	749.0	12,733	14%
FY 2008	1.0	12888.9	1.0	12888.9	1.0	12888.9	0.0	-	0.0	0.0	30.0	429.6	10.0	1288.9	20.0	644.4	12,889	14%
FY 2009	2.1	6254.4	2.1	6254.4	1.1	11838.6	1.0	13259.3	0.0	0.0	34.0	390.0	10.0	1325.9	24.0	552.5	13,259	13%
FY 2010	2.1	6625.5	2.1	6625.5	1.1	12760.2	1.0	13781.0	0.0	0.0	32.8	420.8	9.0	1531.2	23.8	580.3	13,781	13%
FY 2011	2.1	6905.1	2.1	6905.1	1.1	13298.6	1.0	14362.5	0.0	0.0	31.8	452.4	9.0	1595.8	22.8	631.3	14,363	13%
<b>University College (Non-Instructional)</b>																		
FY 2007	1.0	12733.3	1.0	12733.3	1.0	12733.3	0.0	-	0.0	0.0	21.1	603.5	4.3	2961.2	16.8	757.9	12,733	14%
FY 2008	1.0	12888.9	1.0	12888.9	1.0	12888.9	0.0	-	0.0	0.0	24.6	523.9	6.8	1895.4	17.8	724.1	12,889	14%
FY 2009	1.0	13259.3	1.0	13259.3	1.0	13259.3	0.0	-	0.0	0.0	24.9	532.1	5.8	2302.0	19.2	692.0	13,259	13%
FY 2010	1.0	13781.0	1.0	13781.0	1.0	13781.0	0.0	-	0.0	0.0	24.9	553.0	5.8	2392.5	19.2	719.3	13,781	13%
FY 2011	1.0	14362.5	1.0	14362.5	1.0	14362.5	0.0	-	0.0	0.0	23.1	623.1	5.3	2730.5	17.8	807.3	14,363	13%
<b>VP Curriculum &amp; Instruction (less University College)</b>																		
FY 2007	7.5	1706.9	6.8	1872.5	5.8	2195.4	1.0	12733.3	0.3	0.3	83.8	151.9	41.3	308.3	42.5	299.6	12,733	14%
FY 2008	7.1	1815.3	6.8	1895.4	5.8	2222.2	1.0	12888.9	0.3	0.0	71.7	179.8	31.3	411.8	40.4	319.0	12,889	14%
FY 2009	7.4	1787.0	6.8	1964.3	2.8	4821.6	4.0	3314.8	0.7	0.0	74.7	177.5	32.3	410.9	42.4	312.5	13,259	13%
FY 2010	7.5	1849.8	6.8	2041.6	2.8	5011.3	4.0	3445.3	0.7	0.0	73.7	187.0	32.3	427.1	41.4	332.6	13,781	13%
FY 2011	7.4	1935.7	6.8	2127.8	3.8	3830.0	3.0	4787.5	0.7	0.0	51.8	277.1	21.3	675.2	30.6	470.0	14,363	13%
<b>CaTS</b>																		
FY 2007	0.0	-	0.0	-	0.0	-	0.0	-	0.0	0.0	88.0	144.7	33.0	385.9	55.0	231.5	12,733	14%
FY 2008	0.0	-	0.0	-	0.0	-	0.0	-	0.0	0.0	97.0	132.9	38.0	339.2	59.0	218.5	12,889	14%
FY 2009	0.0	-	0.0	-	0.0	-	0.0	-	0.0	0.0	101.0	131.3	40.0	331.5	61.0	217.4	13,259	13%
FY 2010	0.0	-	0.0	-	0.0	-	0.0	-	0.0	0.0	101.0	136.4	39.0	353.4	62.0	222.3	13,781	13%
FY 2011	0.0	-	0.0	-	0.0	-	0.0	-	0.0	0.0	105.0	136.8	36.0	399.0	69.0	208.2	14,363	13%
<b>Provost (Less CaTS, VP Curriculum &amp; Univ. College)</b>																		
FY 2007	2.0	6366.7	2.0	6366.7	2.0	6366.7	0.0	-	0.0	0.0	37.3	341.0	13.3	954.5	24.0	530.6	12,733	14%
FY 2008	2.0	6444.5	2.0	6444.5	2.0	6444.5	0.0	-	0.0	0.0	63.7	202.3	19.9	647.7	43.8	294.3	12,889	14%
FY 2009	2.0	6629.6	2.0	6629.6	2.0	6629.6	0.0	-	0.0	0.0	64.8	204.6	21.5	617.3	43.3	306.1	13,259	13%
FY 2010	2.5	5512.4	2.5	5512.4	2.5	5512.4	0.0	-	0.0	0.0	63.3	217.8	21.5	641.6	41.8	329.7	13,781	13%
FY 2011	2.5	5745.0	2.5	5745.0	2.5	5745.0	0.0	-	0.0	0.0	63.4	226.5	18.7	766.8	44.7	321.5	14,363	13%
<b>Lake Campus (Non-Instructional)</b>																		
FY 2007	0.0	-	0.0	-	0.0	-	0.0	-	0.0	0.0	15.3	38.7	4.5	131.7	10.8	54.9	593	6%
FY 2008	0.0	-	0.0	-	0.0	-	0.0	-	0.0	0.0	17.9	32.4	6.8	85.3	11.1	52.2	580	9%
FY 2009	0.0	-	0.0	-	0.0	-	0.0	-	0.0	0.0	18.8	35.8	6.8	99.6	12.1	55.8	672	7%
FY 2010	0.0	-	0.0	-	0.0	-	0.0	-	0.0	0.0	18.9	45.5	6.8	127.4	12.2	70.8	860	5%
FY 2011	0.0	-	0.0	-	0.0	-	0.0	-	0.0	0.0	18.9	50.6	8.0	120.3	11.0	87.4	957	3%

Note: In FY 2007 vacancies are not included in the FTE count. In all other years the FTE count does include vacancies.

**Wright State University**  
Ratios of Faculty/Staff FTE and Student FTE

**DRAFT**  
2011 Update  
4/12/11

	<b>Total Faculty FTE (g+j+k+l)</b>	Student FTE per Total Faculty FTE	<b>Total Full Time Faculty FTE</b>	Student FTE per Total Full Time Faculty FTE	<b>Tenure-line Faculty FTE</b>	Student FTE per Tenure-line Faculty FTE	<b>Non Tenure-line Faculty FTE</b>	Student FTE per Non Tenure-line Faculty FTE	<b>Adjunct FTE</b>	<b>Grad Teach Asst. FTE</b>	<b>All Staff FTE</b>	Student FTE per All Staff FTE	<b>Clsfd. Staff FTE</b>	Student FTE per Clsfd. Staff FTE	<b>Unclsfd. Staff FTE</b>	Student FTE per Unclsfd. Staff FTE	Fall Term Total Student FTE (SCH/15)	% GR SCH
<b>Total Administrative</b>																		
FY 2007	14.5	880.6	13.8	922.7	12.8	994.8	1.0	12733.3	0.3	0.3	885.6	14.4	451.9	28.2	433.7	29.4	12,733	14%
FY 2008	13.1	983.9	12.8	1006.9	11.8	1092.3	1.0	12888.9	0.3	0.0	965.2	13.4	488.4	26.4	476.8	27.0	12,889	14%
FY 2009	14.5	911.9	13.9	956.0	7.9	1684.8	6.0	2209.9	0.7	0.0	985.2	13.5	487.9	27.2	497.3	26.7	13,259	13%
FY 2010	15.0	916.9	14.3	961.7	8.3	1654.4	6.0	2296.8	0.7	0.0	979.6	14.1	483.2	28.5	496.5	27.8	13,781	13%
FY 2011	15.5	926.6	14.8	968.5	9.8	1461.1	5.0	2872.5	0.67	0.0	969.1	14.8	461.6	31.1	507.6	28.3	14,363	13%
<b>Total Administrative and Total Main Campus Colleges (excluding SoM, SoPP &amp; University College-Instructional)</b>																		
FY 2007	698.9	17.5	556.1	22.0	452.9	27.0	103.2	118.5	100.6	42.2	1078.1	11.3	558.5	21.9	519.6	23.5	12,231	14%
FY 2008	779.9	15.8	638.8	19.2	513.3	24.0	125.5	98.0	110.4	30.7	1177.6	10.4	606.9	20.3	570.7	21.5	12,294	13%
FY 2009	815.6	15.6	643.2	19.7	514.7	24.7	128.6	98.7	129.8	42.6	1196.7	10.6	606.7	20.9	590.0	21.5	12,690	13%
FY 2010	810.2	16.3	646.5	20.4	510.5	25.8	136.1	96.8	121.8	41.9	1192.5	11.0	599.3	22.0	593.2	22.2	13,168	13%
FY 2011	825.3	16.6	640.0	21.4	500.9	27.3	139.1	98.402	140.5	44.9	1177.2	11.6	570.6	24.0	606.7	22.6	13,690	12%
<b>Total Administrative and Total Main Campus Colleges (excluding SoM)</b>																		
FY 2007	726.2	17.5	571.1	22.3	467.9	27.2	103.2	123.4	106.0	49.2	1103.0	11.5	570.0	22.3	533.0	23.9	12,733	14%
FY 2008	810.5	15.9	656.8	19.6	531.3	24.3	125.5	102.7	123.0	30.7	1206.0	10.7	619.9	20.8	586.1	22.0	12,889	14%
FY 2009	849.6	15.6	663.2	20.0	533.7	24.8	129.6	102.3	143.8	42.6	1226.1	10.8	620.2	21.4	605.9	21.9	13,259	13%
FY 2010	843.5	16.3	666.5	20.7	528.5	26.1	138.1	99.8	135.1	41.9	1222.1	11.3	612.8	22.5	609.3	22.6	13,781	13%
FY 2011	860.6	16.7	660.0	21.8	518.9	27.7	141.1	101.8	155.7	44.9	1205.4	11.9	584.1	24.6	621.3	23.1	14,363	13%
<b>Total Administrative and Total University Colleges (excluding SoM)</b>																		
FY 2007	766.1	17.4	594.8	22.4	488.6	27.3	106.2	125.5	122.1	49.2	1108.8	12.0	572.8	23.3	536.0	24.9	13,326	14%
FY 2008	858.2	15.7	683.5	19.7	554.0	24.3	129.5	104.0	144.0	30.7	1212.7	11.1	622.7	21.6	590.1	22.8	13,469	14%
FY 2009	890.6	15.6	689.9	20.2	557.4	25.0	132.6	105.1	158.1	42.6	1232.9	11.3	622.9	22.4	609.9	22.8	13,931	13%
FY 2010	885.4	16.5	693.2	21.1	550.1	26.6	143.1	102.3	150.3	41.9	1228.9	11.9	615.6	23.8	613.3	23.9	14,641	13%
FY 2011	909.7	16.8	686.7	22.3	540.5	28.3	146.1	104.8	178.2	44.9	1211.8	12.6	586.4	26.1	625.3	24.5	15,319	12%

Note: In FY 2007 vacancies are not included in the FTE count. In all other years the FTE count does include vacancies.

Data sources for Academic Faculty FTE:

Tenure-line Faculty, Full-Time Non Tenure-line Faculty, Classified Staff, and Unclassified Staff FTE are budgeted FTE (unrestricted base budget).

Adjunct FTE is calculated using the SSN's of Adjuncts from HR and merged with HEI files for Course Credit Hours (CCH) taught. 12 CCH equals 1 FTE.

Teaching Assistant FTE is based on HEI files. Each Graduate Teaching Assistant equals .33 FTE.

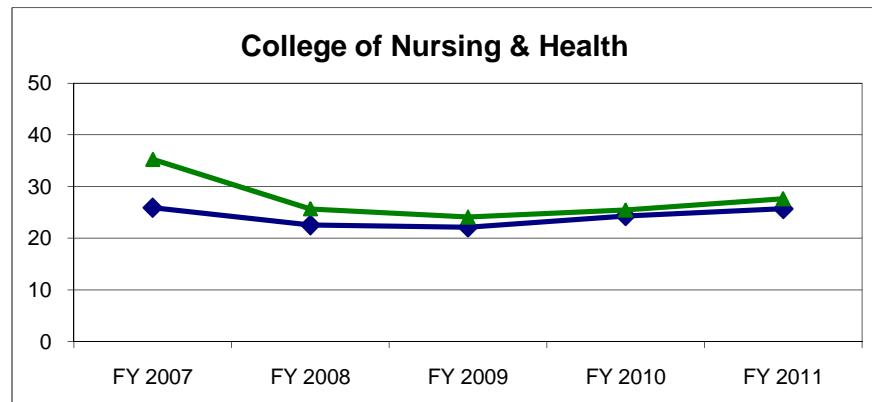
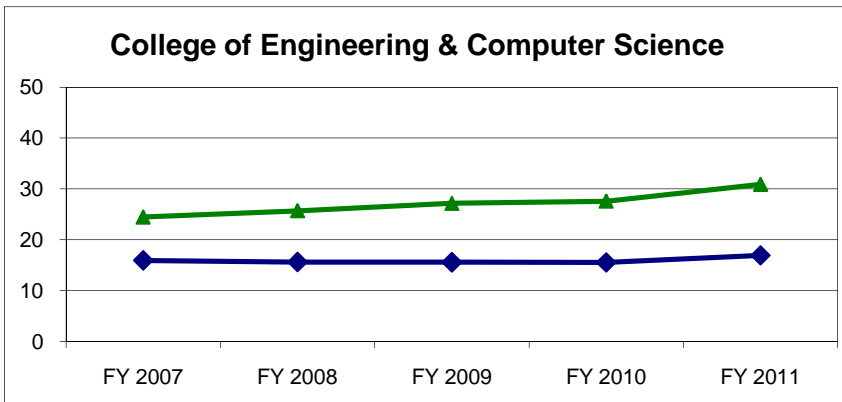
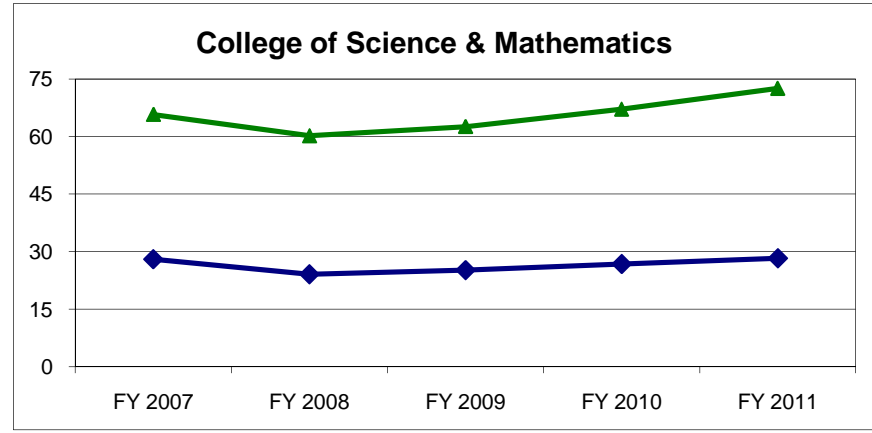
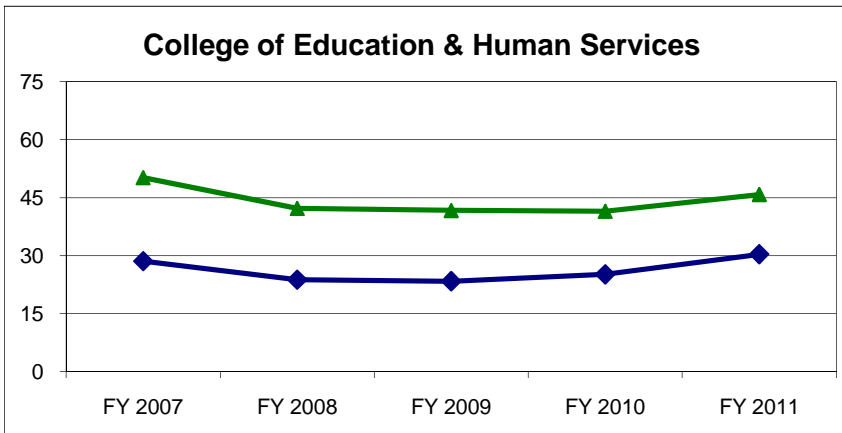
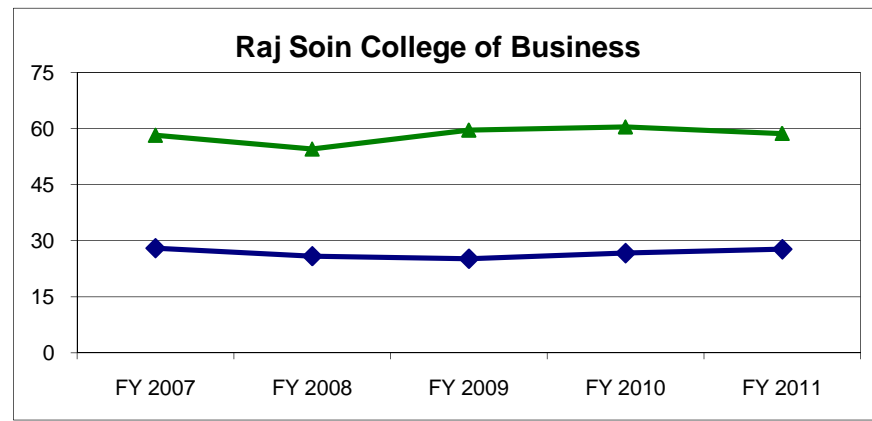
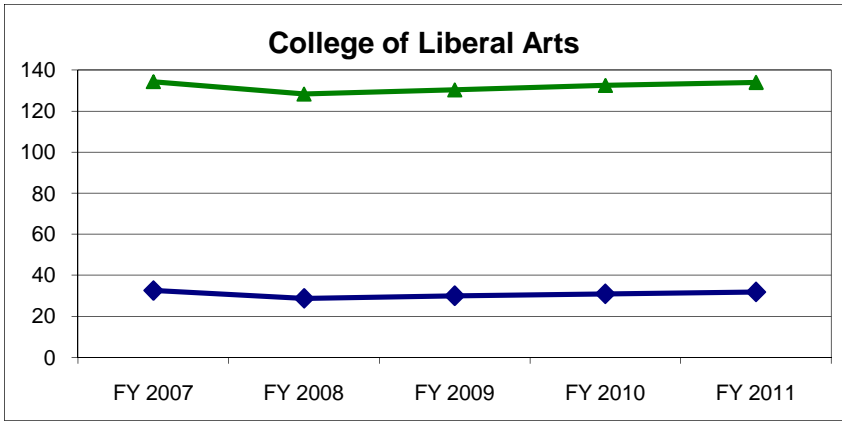
All Faculty and Staff FTE are listed according to where the FTE was expended.



1. Comparison of student FTE per various faculty/staff categories by college (FY 2007 – FY 2011)
  - Graphical representation of student **FTE** per faculty/staff by college
  - Graphical representation of student **FTE** per faculty/staff by employee type

**Wright State University**  
 Comparison of Student FTE per Faculty/Staff by College

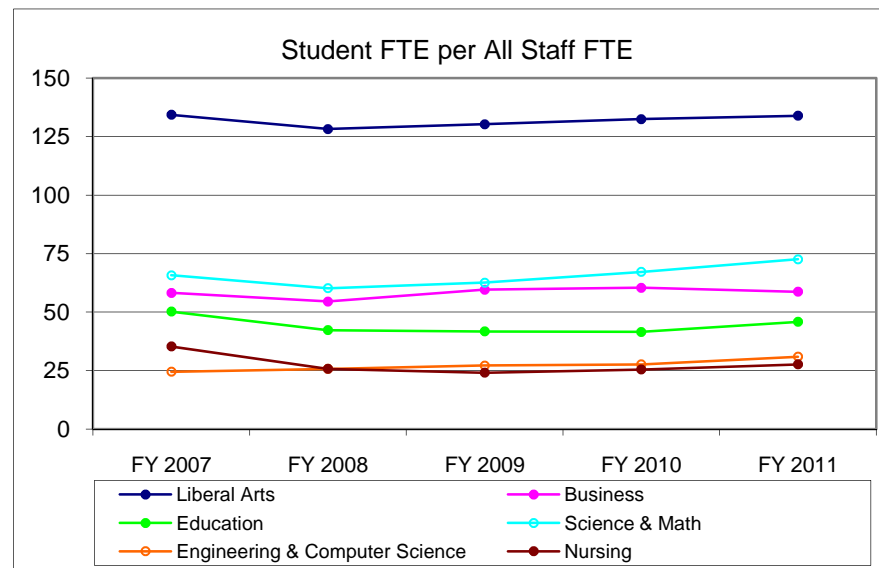
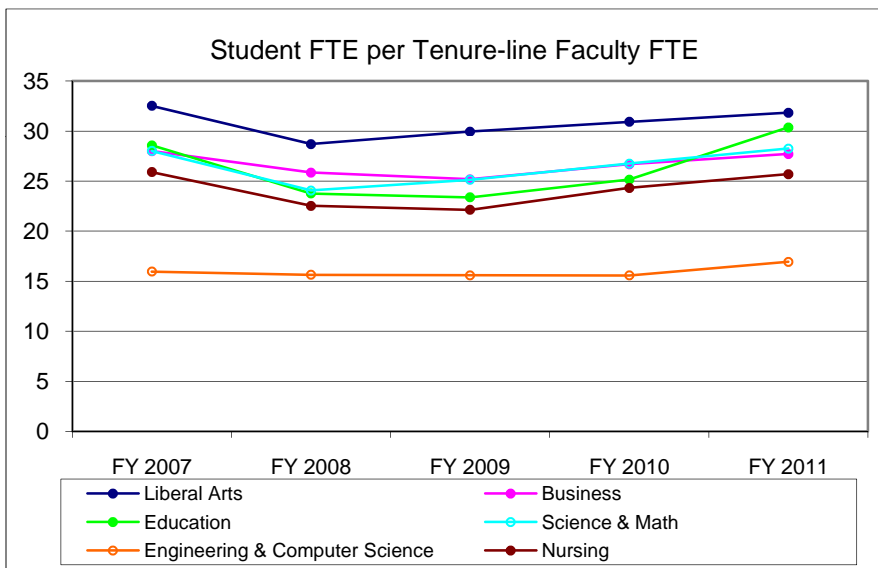
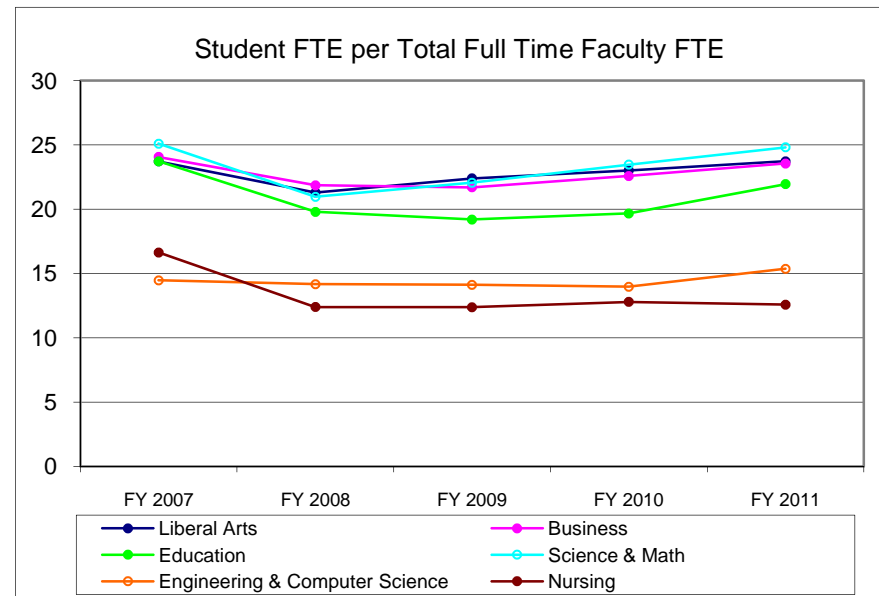
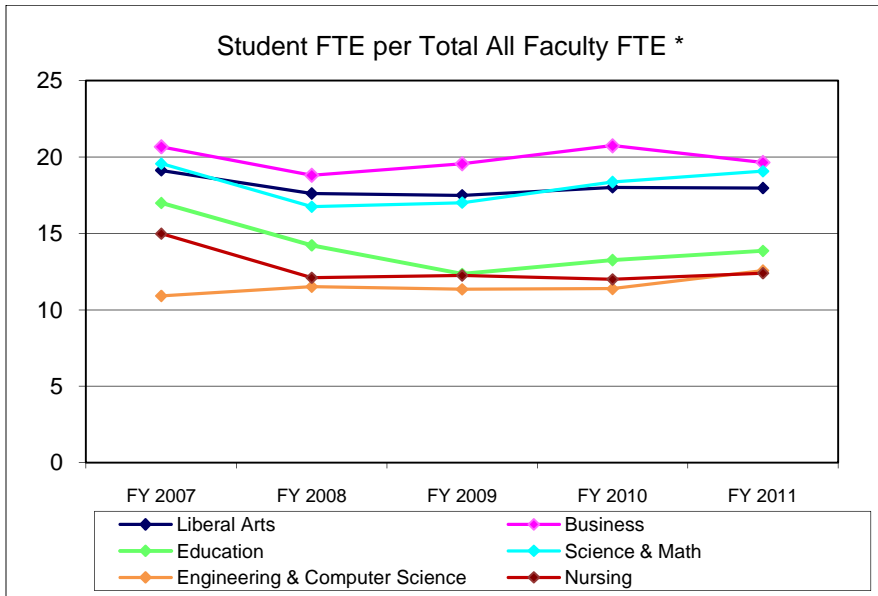
DRAFT  
 2011 Update  
 4/12/11



▲ Students FTE's per Classified & Unclassified Staff FTE     
 ◆ Student FTE's per Tenure-line Faculty FTE

**Wright State University**  
**Comparison of Student FTE per Faculty/Staff**

DRAFT  
 2011 Update  
 4/12/11



\* Total All Faculty FTE includes Tenure-line, Non Tenure-line, Adjuncts (12 CCH = 1 FTE), and Graduate Teaching Assistants (1 Headcount = .33 FTE).

1. FY 2011 faculty/staff ratios sorted by college and rank
  - Student **FTE** per various faculty/staff categories

**WSU Staffing Analysis**  
**FY 2011 Student FTE per Faculty/Staff Ratios**

**DRAFT**  
 2011 Update  
 4/12/11

**Sorted by College:**

	(A) Student FTE per All Faculty*	(B) Student FTE per Total Full Time Faculty FTE	(C) Student FTE per Tenure-line Faculty FTE	(D) Student FTE per All Staff FTE (E+F)	(E) Student FTE per Clsfd. Staff FTE	(F) Student FTE per Unclsfd.Staff FTE	(G) Student FTE per All Faculty* & All Staff	(H) All Faculty FTE per All Staff FTE
Liberal Arts	18.0	23.7	31.8	134.0	225.9	329.2	15.8	7.5
Business	19.6	23.6	27.7	58.7	96.8	148.9	14.7	3.0
Education	13.9	22.0	30.4	45.8	91.6	91.7	10.6	3.3
Sci&Math	19.1	24.8	28.3	72.6	151.4	139.4	15.1	3.8
Engineering	12.6	15.4	16.9	30.9	74.0	53.1	8.9	2.5
Nursing	12.4	12.6	25.7	27.6	44.8	72.2	8.6	2.2
Lake Campus	19.5	35.9	44.1	150.4	405.3	239.1	17.2	7.7

**Sorted by Rank:**

	(A) Student FTE per All Faculty*	(B) Student FTE per Total Full Time Faculty FTE	(C) Student FTE per Tenure-line Faculty FTE	(D) Student FTE per All Staff FTE (E+F)	(E) Student FTE per Clsfd. Staff FTE	(F) Student FTE per Unclsfd.Staff FTE	(G) Student FTE per All Faculty* & All Staff	(H) All Faculty FTE per All Staff FTE
	19.6	35.9	44.1	134.0	405.3	239.1	17.2	7.7
	19.5	24.8	31.8	150.4	225.9	329.2	15.8	7.5
	19.1	23.7	28.3	72.6	151.4	148.9	15.1	3.8
	18.0	23.6	27.7	58.7	96.8	139.4	14.7	3.3
	13.9	22.0	30.4	45.8	91.6	91.7	10.6	3.0
	12.6	15.4	25.7	30.9	74.0	72.2	8.9	2.5
	12.4	12.6	16.9	27.6	44.8	53.1	8.6	2.2

Liberal Arts
  Education
  Business
  Sci&Math
  Engineering
  Lake Campus
  Nursing

\* All Faculty FTE includes Tenure-line, Non Tenure-line, Adjuncts (12 CCH = 1 FTE), and Teaching Assistants (1 Headcount = .33 FTE).

1. Wright State University Main Campus as compared to the median for the 13 state supported University Main Campuses
  - Student credit hours taught to undergraduates by faculty appointment status (Fall 2002 – Fall 2008)
  - Ratio of faculty headcount to student FTE/headcount ratio for tenure-line and all full-time faculty (FY2006 to FY2010).

=

Wright State University Main Campus as Compared to the Median for the 13 State Supported University Main Campuses

**Percent of All Undergraduate Student Credit Hours Taught by Faculty Appointment Status**

		Fall 2002		Fall 2003		Fall 2004		Fall 2005		Fall 2006		Fall 2007		Fall 2008	
		WSU	Percentage Points from Median	WSU	Percentage Points from Median	WSU	Percentage Points from Median	WSU	Percentage Points from Median	WSU	Percentage Points from Median	WSU	Percentage Points from Median	WSU	Percentage Points from Median
<b>Appointment Status</b>	Percent SCH Taught by Full-time Faculty	67%	+4	68%	+2	69%	+1	70%	+6	73%	+9	70%	+3	70%	+5
	Percent SCH Taught by Part-time Faculty	25%	0	24%	-2	24%	0	23%	-1	23%	0	25%	0	24%	-1
	Percent SCH taught by GA	8%	+1	8%	0	7%	0	7%	0	4%	-2	5%	-1	6%	0

**Average Class Section Size - All Students**

		FY 2003		FY 2004		FY 2005		FY 2006		FY 2007		FY 2008		FY 2009	
		WSU	Variance from Median	WSU	Variance from Median	WSU	Variance from Median	WSU	Variance from Median	WSU	Variance from Median	WSU	Variance from Median	WSU	Variance from Median
<b>All Students</b>	Avg. Class Section Size	16	0	15	-1	15	0	14	-1	15	0	15	0	15	-1

**Percentage of First Year Students Taking Any Course Section Taught by Tenured or Tenure Track Faculty**

**FY 2009** WSU - Main Campus      91%      Percentage Points from the Median      0

**Wright State University**  
Ohio Main Campuses  
Faculty Comparative Data  
FY 2009-10

**DRAFT**  
2011 Update  
4/12/11

**Full, Associate, & Assistant Professors**

	Full, Associate, & Assistant Professor Headcount	All Terms Student FTE		Fall Term Student Headcount	
		#	Ratio** (SORT)	#	Ratio**
Cincinnati	1,180	25,998	22.0	31,293	26.5
Ohio State	2,230	55,532	24.9	55,687	25.0
Miami	675	16,822	24.9	16,767	24.8
Cleveland State	477	13,092	27.4	16,506	34.6
<b>Wright State</b>	<b>506</b>	<b>15,055</b>	<b>29.8</b>	<b>17,593</b>	<b>34.8</b>
Bowling Green	540	16,232	30.1	17,350	32.1
Youngstown State	399	12,248	30.7	14,649	36.7
Ohio University	727	23,169	31.9	22,640	31.1
Shawnee State	122	3,940	32.3	4,326	35.5
Kent State	684	22,354	32.7	25,351	37.1
Akron	663	21,858	33.0	26,395	39.8
Toledo	594	20,914	35.2	23,119	38.9
<b>Weighted Average</b>			<b>28.1</b>		<b>30.9</b>

**All Full-Time Faculty**

	Full-Time Faculty Headcount	All Terms Student FTE		Fall Term Student Headcount	
		#	Ratio** (SORT)	#	Ratio**
Cincinnati	1,225	25,998	21.2	31,293	25.5
Bowling Green	754	16,232	21.5	17,350	23.0
Miami	733	16,822	22.9	16,767	22.9
Ohio State	2,236	55,532	24.8	55,687	24.9
Shawnee State	149	3,940	26.4	4,326	29.0
Cleveland State	491	13,092	26.7	16,506	33.6
<b>Wright State</b>	<b>564</b>	<b>15,055</b>	<b>26.7</b>	<b>17,593</b>	<b>31.2</b>
Youngstown State	447	12,248	27.4	14,649	32.8
Akron	724	21,858	30.2	26,395	36.5
Ohio University	727	23,169	31.9	22,640	31.1
Kent State	684	22,354	32.7	25,351	37.1
Toledo	613	20,914	34.1	23,119	37.7
<b>Weighted Average</b>			<b>26.4</b>		<b>29.1</b>

Central State does not report data to Ohio Universities Faculty Salary Survey therefore not included in this report.

\*\* Ratios are calculated using all student data divided by Full-time faculty only (tenure line & all faculty), although some coursework is taught by adjuncts, teaching assistants, etc.

Source:

Student headcount & FTE data: OBR Statistical Profile  
Faculty: Ohio Universities Faculty Salary Survey data, 2009-2010



**Wright State University**  
Ohio Main Campuses  
Faculty Comparative Data  
FY 2008-09

**DRAFT**  
2010 Update  
6/15/10

**Full, Associate, & Assistant Professors**

	Full, Associate, & Assistant Professor Headcount	All Terms Student FTE		Fall Term Student Headcount	
		#	Ratio**	#	Ratio**
Cincinnati	1,194	24,650	20.6	29,566	24.8
Ohio State	2,232	54,666	24.5	54,551	24.4
Cleveland State	497	12,289	24.7	15,438	31.1
Miami	681	17,026	25.0	16,815	24.7
<b>Wright State</b>	<b>502</b>	<b>14,600</b>	<b>29.1</b>	<b>16,626</b>	<b>33.1</b>
Kent State	694	20,283	29.2	23,174	33.4
Youngstown State	392	11,577	29.5	13,683	34.9
Bowling Green	569	16,940	29.8	17,877	31.4
Shawnee State	120	3,625	30.2	3,988	33.2
Akron	651	20,206	31.0	24,722	38.0
Ohio University	710	22,125	31.2	21,363	30.1
Toledo	620	19,906	32.1	22,253	35.9
<b>Weighted Average</b>		<b>26.8</b>		<b>29.3</b>	

**All Full-Time Faculty**

	Full-Time Faculty Headcount	All Terms Student FTE		Fall Term Student Headcount	
		#	Ratio**	#	Ratio**
Cincinnati	1,249	24,650	19.7	29,566	23.7
Bowling Green	851	16,940	19.9	17,877	21.0
Miami	794	17,026	21.4	16,815	21.2
Kent State	921	20,283	22.0	23,174	25.2
<b>Wright State</b>	<b>626</b>	<b>14,600</b>	<b>23.3</b>	<b>16,626</b>	<b>26.6</b>
Toledo	836	19,906	23.8	22,253	26.6
Shawnee State	152	3,625	23.8	3,988	26.2
Cleveland State	510	12,289	24.1	15,438	30.3
Ohio State	2,242	54,666	24.4	54,551	24.3
Youngstown State	440	11,577	26.3	13,683	31.1
Akron	756	20,206	26.7	24,722	32.7
Ohio University	710	22,125	31.2	21,363	30.1
<b>Weighted Average</b>		<b>23.6</b>		<b>25.8</b>	

Central State does not report data to Ohio Universities Faculty Salary Survey therefore not included in this report.

\*\* Ratios are calculated using all student data divided by Full-time faculty only (tenure line & all faculty), although some coursework is taught by adjuncts, teaching assistants, etc.

Source:

Student headcount & FTE data: OBR Statistical Profile - February 2010  
Faculty: Ohio Universities Faculty Salary Survey, 2008-2009

**Wright State University**  
Ohio Main Campuses  
Faculty Comparative Data  
FY 2007-08

**DRAFT**  
2009 Update  
Corrected 6/15/10

**Full, Associate, & Assistant Professors**

	Full, Associate, & Assistant Professor Headcount	All Terms Student FTE		Fall Term Student Headcount	
		#	Ratio**	#	Ratio**
Cincinnati	1,196	24,128	20.2	29,218	24.4
Cleveland State	507	12,110	23.9	15,370	30.3
Ohio State	2,263	54,432	24.1	53,408	23.6
Miami	668	16,699	25.0	16,406	24.6
Shawnee State	121	3,277	27.1	3,712	30.7
<b>Wright State</b>	<b>491</b>	<b>14,088</b>	<b>28.7</b>	<b>16,108</b>	<b>32.8</b>
Kent State	689	19,809	28.8	22,978	33.3
Bowling Green	609	17,744	29.1	18,653	30.6
Youngstown State	386	11,480	29.7	13,603	35.2
Ohio University	725	21,667	29.9	21,089	29.1
Akron	633	19,189	30.3	23,258	36.7
Toledo	586	19,145	32.7	21,303	36.4
<b>Weighted Average</b>		<b>26.3</b>		<b>28.7</b>	

**All Full-Time Faculty**

	Full-Time Faculty Headcount	All Terms Student FTE		Fall Term Student Headcount	
		#	Ratio**	#	Ratio**
Cincinnati	1,247	24,128	19.3	29,218	23.4
Bowling Green	876	17,744	20.3	18,653	21.3
Miami	764	16,699	21.9	16,406	21.5
Shawnee State	146	3,277	22.4	3,712	25.4
<b>Wright State</b>	<b>626</b>	<b>14,088</b>	<b>22.5</b>	<b>16,108</b>	<b>25.7</b>
Kent State	874	19,809	22.7	22,978	26.3
Cleveland State	518	12,110	23.4	15,370	29.7
Ohio State	2,271	54,432	24.0	53,408	23.5
Toledo	777	19,145	24.6	21,303	27.4
Akron	734	19,189	26.1	23,258	31.7
Youngstown State	429	11,480	26.8	13,603	31.7
Ohio University	726	21,667	29.8	21,089	29.0
<b>Weighted Average</b>		<b>23.4</b>		<b>25.5</b>	

Central State does not report data to Ohio Universities Faculty Salary Survey therefore not included in this report.

\*\* Ratios are calculated using all student data divided by Full-time faculty only (tenure line & all faculty), although some coursework is taught by adjuncts, teaching assistants, etc.

Source:

Student headcount & FTE data: OBR Statistical Profile - February 2010  
Faculty: Ohio Universities Faculty Salary Survey, 2007-2008

**Wright State University**  
Ohio Main Campuses  
Faculty Comparative Data  
Fall 2006

**DRAFT**  
2008 Update  
9/30/08

**Full, Associate, & Assistant Professors**

	Full, Associate, & Assistant Professor Headcount	Student FTE		Student Headcount	
		#	Ratio**	#	Ratio**
Cincinnati	1,210	22,827.2	19	28,245	23
Cleveland State	516	10,420.8	20	15,119	29
Miami	728	16,061.2	22	16,198	22
Ohio State	2,227	50,252.2	23	52,512	24
Akron	625	16,983.1	27	22,476	36
Kent State	687	18,780.2	27	22,869	33
Toledo	591	16,182.7	27	19,448	33
<b>Wright State</b>	<b>485</b>	<b>13,319.1</b>	<b>27</b>	<b>16,214</b>	<b>33</b>
Youngstown State	385	10,623.9	28	13,279	34
Ohio University	746	20,651.5	28	20,610	28
Bowling Green	608	17,283.4	28	19,150	31
Shawnee State	115	3,387.1	29	3,897	34
<b>Weighted Average</b>		<b>24</b>		<b>28</b>	

**All Full-Time Faculty**

	Full-Time Faculty Headcount	Student FTE		Student Headcount	
		#	Ratio**	#	Ratio**
Cincinnati	1,263	22,827.2	18	28,245	22
Bowling Green	875	17,283.4	20	19,150	22
Cleveland State	522	10,420.8	20	15,119	29
Miami	800	16,061.2	20	16,198	20
Kent State	873	18,780.2	22	22,869	26
Toledo	739	16,182.7	22	19,448	26
<b>Wright State</b>	<b>604</b>	<b>13,319.1</b>	<b>22</b>	<b>16,214</b>	<b>27</b>
Ohio State	2,237	50,252.2	22	52,512	23
Shawnee State	143	3,387.1	24	3,897	27
Akron	704	16,983.1	24	22,476	32
Youngstown State	426	10,623.9	25	13,279	31
Ohio University	749	20,651.5	28	20,610	28
<b>Weighted Average</b>		<b>22</b>		<b>25</b>	

Central State does not report data to Ohio Universities Faculty Salary Survey therefore not included in this report.

\*\* Ratios are calculated using all student data divided by Full-time faculty only (tenure line & all faculty), although some coursework is taught by adjuncts, teaching assistants, etc.

Source:

Student headcount data: OBR HEI Student Inventory Data, Fall 2006

Faculty: Ohio Universities Faculty Salary Survey, 2006-2007

**Wright State University**  
Ohio Main Campuses  
Faculty Comparative Data  
Fall 2005

**DRAFT**  
2008 Update  
9/30/08

**Full, Associate, & Assistant Professors**

	Full, Associate, & Assistant Professor Headcount	Student FTE		Student Headcount	
		#	Ratio**	#	Ratio**
Cincinnati	1,194	22,637.8	19	27,908	23
Cleveland State	513	10,488.3	20	15,530	30
Miami	746	16,089.1	22	16,574	22
Ohio State	2,188	49,147.3	22	51,333	23
Akron	625	16,126.3	26	21,801	35
Youngstown State	386	10,356.0	27	12,920	33
Toledo	589	16,138.8	27	19,354	33
Ohio University	742	20,629.1	28	20,461	28
Bowling Green	609	17,273.9	28	19,091	31
<b>Wright State</b>	<b>463</b>	<b>13,346.6</b>	<b>29</b>	<b>16,402</b>	<b>35</b>
Kent State	662	19,508.9	29	23,874	36
Shawnee State	113	3,350.1	30	3,852	34
<b>Weighted Average</b>			<b>24</b>	<b>28</b>	

**All Full-Time Faculty**

	Full-Time Faculty Headcount	Student FTE		Student Headcount	
		#	Ratio**	#	Ratio**
Cincinnati	1,241	22,637.8	18	27,908	22
Miami	822	16,089.1	20	16,574	20
Cleveland State	526	10,488.3	20	15,530	30
Bowling Green	851	17,273.9	20	19,091	22
Toledo	752	16,138.8	21	19,354	26
Ohio State	2,199	49,147.3	22	51,333	23
Akron	697	16,126.3	23	21,801	31
Kent State	834	19,508.9	23	23,874	29
<b>Wright State</b>	<b>554</b>	<b>13,346.6</b>	<b>24</b>	<b>16,402</b>	<b>30</b>
Youngstown State	427	10,356.0	24	12,920	30
Shawnee State	138	3,350.1	24	3,852	28
Ohio University	744	20,629.1	28	20,461	28
<b>Weighted Average</b>			<b>22</b>	<b>25</b>	

Central State does not report data to Ohio Universities Faculty Salary Survey therefore not included in this report.

\*\* Ratios are calculated using all student data divided by Full-time faculty only (tenure line & all faculty), although some coursework is taught by adjuncts, teaching assistants, etc.

Source:

Student headcount data: OBR HEI Student Enrollment Query, Fall 2005  
Faculty: Ohio Universities Faculty Salary Survey, 2005-2006

Appendix A: Staffing Analysis Definitions

**University Student/Faculty/Staff Populations**

Student Headcount and FTE: Includes School of Medicine and Lake Campus. Source: Prior to Fall 2006 - SIS 232 (14th day). As of Fall 2006 Banner Enrollment Reports.

Full-Time Faculty, Unclassified Staff, Classified Staff: Includes School of Medicine. Prior to FY2007 budgeted FTE as of July 1st from RAPS. As of FY2007 Banner - HR.

AAUP Tenure Line: Headcount of Tenured and Tenure-track faculty from instructional accounts only. Excludes Dean's offices, SoM, and SoPP. Actual, not budgeted, numbers. Source: AAUP Faculty Salary Survey.

**Budgeted Salary Expenditures as % of Total Gross Budget**

Budgeted Faculty and Staff: Prior to 2006-07 budgeted FTE as of July 1st from RAPS. As of 2006-07 Banner - Finance. Total University excluding SoM, then SoM listed separately.

**Ratios of Faculty/Staff FTE and Student FTE (School of Medicine not included)**

Full-Time Faculty, Tenure-line Faculty, Non Tenure-line Faculty, Classified Staff and Unclassified Staff: Budgeted FTE as of July 1st. Dean's Offices are included within each college in the Fall Quarter Instructional Staffing Data.

Full-Time Faculty: Sum of Tenure-line and Non Tenure-line faculty.

Tenure-line Faculty: All Professors, Associate Professors, and Assistant Professors. Includes SoPP which does not actually grant tenure

Non Tenure-line Faculty: All Instructors and Lectures.

Adjunct: Calculated using the SSN's of Adjuncts from HR and merged with HEI files for Course Credit Hours (CCH) taught. 12 CCH = 1 FTE.

Teaching Assistants: FTE is based on HEI files. Each unduplicated SSN equals .33 FTE.

**Graphs and Charts: Comparison of Student FTE per Faculty/Staff FTE**

All data is linked to Ratios of Faculty/Staff FTE and Student FTE. (see above)

**Wright State University Main Campus as Compared to the Median for the 13 State Supported University Main Campuses**

Source: OBR Performance Report (HEI data)

**Ohio Main Campuses - Faculty Comparative Data**

Student FTE and Headcount: Includes School of Medicine. Source: OBR Student Inventory Data (HEI data).

Faculty Headcount: Does not include School of Medicine. Faculty in instructional accounts only. Actual, not budgeted, numbers. Source: Ohio Universities Faculty Salary Survey.

Full, Associate & Assistant Professor Headcount: Does not include faculty in Dean's offices or other non-instructional accounts.

Full-Time Faculty Headcount: Includes Full/Associate/Assistant Professors, Instructors and Lectures.

Appendix B: Faculty Staffing Guidelines

**TENURE LINE FACULTY**

Full-time core faculty with terminal degrees who teach at the 300 level or above for more than half their teaching assignments, pursue active research agendas, and perform service that engages internal and external constituencies.

**INSTRUCTORS, LECTURERS and VISITING FACULTY**

Full-time faculty with advanced (but not necessarily terminal) degrees who--

- ◆ teach predominantly basic level undergraduate courses, such as ENG 101 and 102, basic language instruction, and beginning level mathematics along with routine service participation, or
- ◆ provide temporary replacement for tenure line faculty.

**ADJUNCTS**

Part-time faculty who--

- ◆ teach in specialty fields that have insufficient demand for a full-time faculty member, such as HPR or instruction in a specific musical instrument;or
- ◆ are working or retired professionals whose teaching in their fields of expertise provides valuable experiences for students;or
- ◆ provide temporary replacement for full-time faculty who resign, retire, or are on professional development, sick, or other leave;or
- ◆ provide temporary response to enrollment growth (three years or less);or
- ◆ provide teaching that is performed by GTAs at other institutions.