

Wright State University

FY 2009-10 Staffing Analysis

DRAFT - 6/28/10

Wright State University FY 2009-10 Staffing Analysis

The 6/28/10 Staffing Analysis draft consists of the following:

1. University Student/Faculty/Staff Population (FY 2005 – FY 2010) and Budgeted Compensation (FY 2005-06 through FY 2009-10)
 - Student fall headcount and all terms student credit hours/FTE with ratio of FTE to headcount. Faculty/staff FTE and vacancies.
 - Budgeted compensation as percent of total gross budget by college/unit.
2. Staffing data by academic and non-academic colleges and divisions from FY 2006 to FY 2010
 - Faculty/staff FTE and ratio of student FTE to faculty/staff FTE
3. Comparison of student FTE per various faculty/staff categories by college (FY 2006 – FY 2010)
 - Graphical representation of student **FTE** per faculty/staff by college
 - Graphical representation of student **FTE** per faculty/staff by employee type
4. FY 2009 and FY 2010 faculty/staff ratios sorted by college and rank
 - Student **FTE** per various faculty/staff categories
5. Wright State University Main Campus as compared to the median for the 13 state supported University Main Campuses
 - Student credit hours taught to undergraduates by faculty appointment status (Fall 2002 – Fall 2007)
 - Ratio of faculty headcount to student FTE and student headcount ratio for tenure-line and all full-time faculty (FY05 – FY09)

Appendix A: Staffing Analysis Definitions

Appendix B: Faculty Staffing Guidelines

1. University Student/Faculty/Staff Population (FY 2005 – FY 2010) and Budgeted Compensation (FY 2005-06 through FY 2009-10)
 - Student fall headcount and all terms student credit hours/FTE with ratio of FTE to headcount. Faculty/staff FTE and vacancies.
 - Budgeted compensation as percent of total gross budget by college/unit

Wright State University
University Student/Faculty/Staff Population

DRAFT
2010 Update
6/11/10

	<u>Fall Student Headcount</u>	<u>Fall Student FTE</u>	<u>FTE/ Headcount</u>		<u>All Terms SCH</u>	<u>% Change</u>
2004	16,944	13,965	82%	2004-05	663,575	--
2005	17,074	14,016	82%	2005-06	669,103	0.8%
2006	16,870	13,943	83%	2006-07	656,270	-1.9%
2007	16,913	14,090	83%	2007-08	665,224	1.4%
2008	17,662	14,591	83%	2008-09	689,064	3.6%
2009	18,786	15,318	82%	2009-10	719,380	4.4%

Budgeted FTE - Unrestricted Base Budget Positions

	Full-Time Faculty	Unclassified	Classified	Faculty Vacancies	Unclassified Vacancies	Classified Vacancies	AAUP (b) Tenure Line (Filled Positions)	Tenure Line (Vacancy Positions)
FY05(a)	666.80	587.20	625.40	32.12	26.74	26.79	461	16.38
FY06	679.62	602.80	623.30	24.87	26.61	41.18	463	20.00
FY07(c)	701.07	620.59	708.73	34.70	38.21	52.91	485	25.83
FY08	768.50	626.85	707.90	64.03	38.31	46.06	491	51.70
FY09	780.37	654.86	710.29	34.94	32.67	37.04	502	26.07
FY10	785.78	656.06	694.73	33.95	45.26	65.47	506	22.08

Note: Vacancy FTE are included in the Full-Time Faculty, Unclassified and Classified count. SOM vacancy FTE are excluded from all counts.

(a) In FY05 SOM reallocated 46.00 full-time faculty FTE to restricted funds.

(b) Source: AAUP Faculty Salary Survey. Includes tenured and tenure track faculty.

(c) FY07 FT Faculty/Staff FTE data is as of March 2007 and the Vacancy FTE data is as of 5/31/07.

Wright State University
Budgeted Compensation as % of Total Gross Budget

DRAFT
2010 Update
6/28/10

Fiscal Year 2009-10

College/Unit	Benefits	% Gross	Budgeted	% Gross	Budgeted	% Gross	Budgeted	% Gross	Total Gross
	\$	Budget	Faculty	Budget	Unclassified	Budget	Classified	Budget	Gross Budget
President	\$ 379,543	16.56%	\$ 540,044	23.56%	\$ 311,080	13.57%	\$ 309,217	13.49%	\$ 2,292,593
Provost - Non Academic	\$ 4,831,627	14.12%	\$ 454,778	1.33%	\$ 8,610,367	25.16%	\$ 3,762,882	11.00%	\$ 34,219,944
UVCL	\$ 556,295	18.30%	\$ 143,988	4.74%	\$ 1,245,779	40.98%	\$ 209,723	6.90%	\$ 3,040,157
VP Business & Fiscal Affairs	\$ 5,784,250	13.91%	\$ -	0.00%	\$ 5,862,957	14.10%	\$ 6,846,382	16.46%	\$ 41,595,914
VP Student Affairs	\$ 2,993,933	25.19%	\$ 10,000	0.08%	\$ 5,560,720	46.79%	\$ 2,147,825	18.07%	\$ 11,884,193
VP University Advancement	\$ 1,195,068	22.62%	\$ -	0.00%	\$ 2,866,454	54.26%	\$ 530,822	10.05%	\$ 5,282,950
VP Curriculum & Instruction	\$ 1,225,097	16.92%	\$ 820,447	11.33%	\$ 2,110,492	29.15%	\$ 559,660	7.73%	\$ 7,241,086
Other Institutional	\$ 2,734,656	6.04%	\$ -	0.00%	\$ 3,000	0.01%	\$ 3,000	0.01%	\$ 45,260,361
Sub Total	\$ 19,700,469	13.06%	\$ 1,969,257	1.31%	\$ 26,570,849	17.62%	\$ 14,369,511	9.53%	\$ 150,817,198
Business	\$ 2,876,136	17.27%	\$ 7,846,890	47.12%	\$ 563,323	3.38%	\$ 512,906	3.08%	\$ 16,651,827
Education & Human Service	\$ 2,094,406	17.11%	\$ 4,762,574	38.91%	\$ 677,851	5.54%	\$ 579,613	4.73%	\$ 12,241,419
Engineering & Computer Science	\$ 2,772,718	19.19%	\$ 7,019,700	48.59%	\$ 1,272,918	8.81%	\$ 492,123	3.41%	\$ 14,446,635
Lake Campus	\$ 926,890	12.42%	\$ 1,666,469	22.34%	\$ 794,194	10.65%	\$ 251,147	3.37%	\$ 7,460,129
Liberal Arts	\$ 4,705,903	19.38%	\$ 13,516,885	55.67%	\$ 751,853	3.10%	\$ 700,618	2.89%	\$ 24,280,109
Library	\$ 1,076,539	11.69%	\$ -	0.00%	\$ 2,291,198	24.89%	\$ 943,705	10.25%	\$ 9,206,174
Nursing	\$ 1,398,652	20.76%	\$ 3,267,496	48.50%	\$ 440,673	6.54%	\$ 427,719	6.35%	\$ 6,736,540
Professional Psychology	\$ 969,947	19.56%	\$ 1,880,160	37.93%	\$ 747,655	15.08%	\$ 355,915	7.18%	\$ 4,957,570
Graduate Studies	\$ 720,977	9.39%	\$ 401,310	5.23%	\$ 1,293,260	16.85%	\$ 328,896	4.28%	\$ 7,676,903
Science & Mathematics	\$ 4,556,375	17.54%	\$ 11,909,743	45.84%	\$ 1,478,560	5.69%	\$ 844,558	3.25%	\$ 25,980,655
Sub Total	\$ 22,098,543	17.05%	\$ 52,271,227	40.32%	\$ 10,311,485	7.95%	\$ 5,437,200	4.19%	\$ 129,637,961
Total	\$ 41,799,012	14.90%	\$ 54,240,484	19.34%	\$ 36,882,334	13.15%	\$ 19,806,711	7.06%	\$ 280,455,159
Medicine	\$ 6,454,727	19.05%	\$ 13,084,865	38.61%	\$ 3,172,592	9.36%	\$ 3,689,743	10.89%	\$ 33,891,319

Note: Gross Budget is shown net of Cost Recoveries.

Wright State University
Budgeted Compensation as % Total Gross Budget

DRAFT
2009 Update
8/5/09

Fiscal Year 2008-09

College/Unit	Benefits \$	% Gross Budget	Budgeted Faculty \$	% Gross Budget	Budgeted Unclassified \$	% Gross Budget	Budgeted Classified \$	% Gross Budget	Total Gross Budget
President	\$ 308,974	15.45%	\$ 518,373	25.92%	\$ 176,067	8.81%	\$ 296,821	14.84%	\$ 1,999,569
Provost - Non Academic	\$ 4,918,247	21.56%	\$ 583,971	2.56%	\$ 9,348,712	40.97%	\$ 3,501,066	15.34%	\$ 22,816,954
VP Business & Fiscal Affairs	\$ 5,471,389	13.26%	\$ -	0.00%	\$ 5,583,893	13.53%	\$ 7,022,298	17.02%	\$ 41,260,939
VP Student Affairs	\$ 2,875,954	22.06%	\$ -	0.00%	\$ 5,353,981	41.08%	\$ 2,023,300	15.52%	\$ 13,034,239
VP University Advancement	\$ 924,885	19.82%	\$ -	0.00%	\$ 2,253,349	48.28%	\$ 426,773	9.14%	\$ 4,667,432
VP Curriculum & Instruction	\$ 1,456,811	18.10%	\$ 775,536	9.64%	\$ 2,274,902	28.27%	\$ 987,442	12.27%	\$ 8,048,137
Other Institutional	\$ 1,648,129	5.64%	\$ -	0.00%	\$ 5,198	0.02%	\$ 3,000	0.01%	\$ 29,204,979
Sub Total	\$ 17,604,390	14.55%	\$ 1,877,880	1.55%	\$ 24,996,102	20.65%	\$ 14,260,698	11.78%	\$ 121,032,249
Business	\$ 2,630,392	15.44%	\$ 7,509,126	44.07%	\$ 611,271	3.59%	\$ 497,489	2.92%	\$ 17,038,783
Education & Human Service	\$ 1,984,970	15.67%	\$ 4,816,453	38.03%	\$ 714,543	5.64%	\$ 583,569	4.61%	\$ 12,664,256
Engineering & Computer Science	\$ 2,588,874	17.83%	\$ 6,848,458	47.16%	\$ 1,272,918	8.77%	\$ 482,822	3.32%	\$ 14,522,073
Lake Campus	\$ 937,999	12.04%	\$ 1,662,138	21.33%	\$ 834,512	10.71%	\$ 270,664	3.47%	\$ 7,791,649
Liberal Arts	\$ 4,248,353	17.68%	\$ 13,135,936	54.68%	\$ 761,321	3.17%	\$ 632,145	2.63%	\$ 24,024,278
Library	\$ 1,058,317	11.48%	\$ -	0.00%	\$ 2,229,213	24.18%	\$ 952,988	10.34%	\$ 9,219,212
Nursing	\$ 1,251,151	19.34%	\$ 3,170,030	48.99%	\$ 423,711	6.55%	\$ 403,283	6.23%	\$ 6,470,274
Professional Psychology	\$ 880,466	18.43%	\$ 1,827,822	38.26%	\$ 714,562	14.96%	\$ 310,349	6.50%	\$ 4,777,933
Graduate Studies	\$ 660,514	9.39%	\$ 379,912	5.40%	\$ 1,229,317	17.47%	\$ 310,402	4.41%	\$ 7,034,855
Science & Mathematics	\$ 4,179,684	16.11%	\$ 11,782,148	45.40%	\$ 1,286,736	4.96%	\$ 892,625	3.44%	\$ 25,951,281
Sub Total	\$ 20,420,719	15.77%	\$ 51,132,024	39.49%	\$ 10,078,103	7.78%	\$ 5,336,336	4.12%	\$ 129,494,594
Total	\$ 38,025,109	15.18%	\$ 53,009,904	21.16%	\$ 35,074,205	14.00%	\$ 19,597,035	7.82%	\$ 250,526,843
Medicine	\$ 5,806,577	12.30%	\$ 13,018,624	27.57%	\$ 2,726,198	5.77%	\$ 3,194,921	6.77%	\$ 47,225,898

Note: Gross Budget is shown net of Cost Recoveries.

Wright State University
Budgeted Compensation as % of Total Gross Budget

DRAFT
2008 Update
9/30/08

Fiscal Year 2007-08 *

College/Unit	Benefits		Budgeted Faculty		Budgeted Unclassified		Budgeted Classified		Total Gross Budget
	\$	% Gross Budget	\$	% Gross Budget	\$	% Gross Budget	\$	% Gross Budget	
President	\$ 300,028	15.15%	\$ 501,149	25.30%	\$ 164,375	8.30%	\$ 263,878	13.32%	\$ 1,980,823
Provost - Non Academic	\$ 5,020,330	15.33%	\$ 558,152	1.70%	\$ 8,800,769	26.87%	\$ 3,262,183	9.96%	\$ 32,757,048
VP Business & Fiscal Affairs	\$ 5,240,112	12.95%	\$ -	0.00%	\$ 5,179,942	12.80%	\$ 7,011,318	17.32%	\$ 40,474,496
VP Student Affairs	\$ 2,853,301	21.82%	\$ -	0.00%	\$ 5,008,727	38.30%	\$ 1,952,243	14.93%	\$ 13,078,465
VP University Advancement	\$ 1,039,048	22.19%	\$ -	0.00%	\$ 2,224,321	47.50%	\$ 404,886	8.65%	\$ 4,682,532
VP Curriculum & Instruction	\$ 1,408,407	18.36%	\$ 664,507	8.66%	\$ 2,142,835	27.94%	\$ 911,478	11.88%	\$ 7,669,933
Other Institutional	\$ 3,391	0.01%	\$ -	0.00%	\$ 5,198	0.02%	\$ 3,000	0.01%	\$ 27,230,665
Sub Total	\$ 15,864,617	12.41%	\$ 1,723,808	1.35%	\$ 23,526,167	18.40%	\$ 13,808,986	10.80%	\$ 127,873,962
Business	\$ 2,285,849	16.17%	\$ 7,201,316	50.94%	\$ 573,949	4.06%	\$ 521,003	3.69%	\$ 14,137,368
Education & Human Service	\$ 1,684,840	14.57%	\$ 4,551,680	39.37%	\$ 706,984	6.12%	\$ 555,998	4.81%	\$ 11,560,373
Engineering & Computer Science	\$ 2,300,361	17.11%	\$ 6,480,592	48.19%	\$ 1,198,868	8.92%	\$ 337,959	2.51%	\$ 13,446,654
Lake Campus	\$ 852,958	10.87%	\$ 1,585,156	20.20%	\$ 839,528	10.70%	\$ 290,615	3.70%	\$ 7,847,754
Liberal Arts	\$ 3,869,509	15.94%	\$ 12,930,874	53.26%	\$ 761,321	3.14%	\$ 632,145	2.60%	\$ 24,277,916
Library	\$ 1,227,004	13.27%	\$ -	0.00%	\$ 2,172,326	23.49%	\$ 995,716	10.77%	\$ 9,248,968
Nursing	\$ 1,084,527	16.17%	\$ 2,835,389	42.28%	\$ 422,751	6.30%	\$ 424,379	6.33%	\$ 6,705,665
Professional Psychology	\$ 757,524	17.45%	\$ 1,553,939	35.80%	\$ 553,722	12.76%	\$ 341,471	7.87%	\$ 4,340,539
Graduate Studies	\$ 585,596	8.80%	\$ 184,912	2.78%	\$ 1,055,283	15.86%	\$ 286,086	4.30%	\$ 6,654,391
Science & Mathematics	\$ 3,782,112	14.66%	\$ 11,369,130	44.08%	\$ 1,275,112	4.94%	\$ 867,136	3.36%	\$ 25,794,011
Sub Total	\$ 18,430,280	14.86%	\$ 48,692,988	39.26%	\$ 9,559,844	7.71%	\$ 5,252,508	4.24%	\$ 124,013,639
Total	\$ 34,294,897	13.62%	\$ 50,416,796	20.02%	\$ 33,086,011	13.14%	\$ 19,061,494	7.57%	\$ 251,887,601
Medicine	\$ 5,346,817	9.29%	\$ 12,233,360	21.27%	\$ 2,447,729	4.26%	\$ 2,961,533	5.15%	\$ 57,524,541

Note: Gross Budget is shown net of Cost Recoveries.

* Please note organizational structures change year to year.

Wright State University
Budgeted Compensation as % of Total Gross Budget

DRAFT
2008 Update
9/30/08

Fiscal Year 2006-07

College/Unit	Benefits \$	% Gross Budget	Budgeted Faculty \$	% Gross Budget	Budgeted Unclassified \$	% Gross Budget	Budgeted Classified \$	% Gross Budget	Total Gross Budget
President	\$ 258,634	15.53%	\$ 311,631	18.71%	\$ 258,797	15.54%	\$ 243,614	14.63%	\$ 1,665,648
Provost - Non Academic	\$ 2,454,995	35.02%	\$ 610,339	8.71%	\$ 5,551,206	79.20%	\$ 1,849,276	26.38%	\$ 7,009,508
VP Business & Fiscal Affairs	\$ 4,534,528	11.80%	\$ -	0.00%	\$ 4,822,714	12.55%	\$ 6,710,443	17.46%	\$ 38,429,712
VP Student Affairs/Enrollment	\$ 2,889,654	19.14%	\$ -	0.00%	\$ 5,911,473	39.15%	\$ 2,251,467	14.91%	\$ 15,099,802
VP University Advancement	\$ 797,010	18.80%	\$ -	0.00%	\$ 1,954,698	46.11%	\$ 390,056	9.20%	\$ 4,239,271
VP Curriculum & Instruction	\$ 1,906,936	16.36%	\$ 481,590	4.13%	\$ 3,471,766	29.78%	\$ 1,541,517	13.22%	\$ 11,658,199
Other Institutional	\$ 2,771	0.01%	\$ -	0.00%	\$ 5,198	0.02%	\$ 3,000	0.01%	\$ 30,879,666
Sub Total	\$ 12,844,528	11.79%	\$ 1,403,560	1.29%	\$ 21,975,852	20.16%	\$ 12,989,373	11.92%	\$ 108,981,806
Business	\$ 2,090,219	16.01%	\$ 6,365,106	48.74%	\$ 548,175	4.20%	\$ 542,161	4.15%	\$ 13,058,313
Education & Human Service	\$ 1,448,688	13.45%	\$ 3,907,802	36.27%	\$ 562,664	5.22%	\$ 624,703	5.80%	\$ 10,772,729
Engineering & Computer Science	\$ 1,967,680	15.70%	\$ 5,595,436	44.64%	\$ 1,075,778	8.58%	\$ 368,592	2.94%	\$ 12,533,257
Lake Campus	\$ 756,573	10.31%	\$ 1,460,038	19.90%	\$ 762,643	10.39%	\$ 293,553	4.00%	\$ 7,337,974
Liberal Arts	\$ 3,540,574	16.36%	\$ 11,605,670	53.62%	\$ 746,405	3.45%	\$ 606,793	2.80%	\$ 21,642,871
Library	\$ 1,110,540	12.50%	\$ -	0.00%	\$ 2,122,382	23.88%	\$ 978,868	11.01%	\$ 8,887,723
Nursing	\$ 878,636	17.71%	\$ 2,251,768	45.38%	\$ 338,464	6.82%	\$ 396,793	8.00%	\$ 4,962,478
Professional Psychology	\$ 708,824	16.36%	\$ 1,501,877	34.67%	\$ 442,335	10.21%	\$ 381,940	8.82%	\$ 4,332,172
Graduate Studies	\$ 450,260	7.38%	\$ 175,959	2.88%	\$ 904,890	14.83%	\$ 263,531	4.32%	\$ 6,103,323
Science & Mathematics	\$ 3,522,756	14.88%	\$ 10,506,388	44.38%	\$ 1,231,897	5.20%	\$ 842,162	3.56%	\$ 23,673,647
Sub Total	\$ 16,474,750	14.54%	\$ 43,370,044	38.28%	\$ 8,735,633	7.71%	\$ 5,299,096	4.68%	\$ 113,304,487
Total	\$ 29,319,278	13.19%	\$ 44,773,604	20.14%	\$ 30,711,485	13.82%	\$ 18,288,469	8.23%	\$ 222,286,293
Medicine	\$ 5,052,307	17.72%	\$ 11,070,607	38.83%	\$ 2,637,030	9.25%	\$ 2,228,599	7.82%	\$ 28,511,984

Note: Gross Budget is shown net of Cost Recoveries.

Wright State University
Budgeted Compensation as % of Total Gross Budget

DRAFT
2008 Update
9/30/08

Fiscal Year 2005-06

College/Unit	Benefits		Budgeted Faculty		Budgeted Unclassified		Budgeted Classified		Total Gross Budget
	\$	% Gross Budget	\$	% Gross Budget	\$	% Gross Budget	\$	% Gross Budget	
President	\$ 218,989	13.86%	\$ 296,792	18.78%	\$ 385,120	24.37%	\$ 86,245	5.46%	\$ 1,579,999
Provost - Non Academic	\$ 2,047,775	10.33%	\$ 576,515	2.91%	\$ 5,952,393	30.04%	\$ 1,124,761	5.68%	\$ 19,815,790
VP Business & Fiscal Affairs	\$ 3,664,354	8.35%	\$ -	0.00%	\$ 4,339,579	9.89%	\$ 6,625,837	15.10%	\$ 43,870,196
VP Student Affairs/Enrollment	\$ 2,199,070	9.51%	\$ -	0.00%	\$ 5,128,042	22.17%	\$ 2,054,441	8.88%	\$ 23,126,600
VP University Advancement	\$ 615,150	16.10%	\$ -	0.00%	\$ 1,752,236	45.85%	\$ 332,711	8.71%	\$ 3,821,542
VP Curriculum & Instruction	\$ 1,579,647	12.30%	\$ 670,818	5.22%	\$ 3,208,056	24.99%	\$ 1,354,325	10.55%	\$ 12,838,781
Other Institutional	\$ 1,950	0.00%	\$ -	0.00%	\$ 3,000	0.01%	\$ 3,000	0.01%	\$ 41,605,400
Sub Total	\$ 10,326,935	7.04%	\$ 1,544,125	1.05%	\$ 20,768,426	14.16%	\$ 11,581,320	7.90%	\$ 146,658,308
Business	\$ 1,885,545	15.40%	\$ 5,853,162	47.80%	\$ 608,418	4.97%	\$ 427,204	3.49%	\$ 12,243,976
Education & Human Service	\$ 1,306,684	12.94%	\$ 3,557,826	35.24%	\$ 633,527	6.27%	\$ 493,977	4.89%	\$ 10,096,297
Engineering & Computer Science	\$ 1,832,746	14.71%	\$ 5,432,204	43.60%	\$ 941,679	7.56%	\$ 333,789	2.68%	\$ 12,459,183
Lake Campus	\$ 608,680	8.16%	\$ 1,279,836	17.16%	\$ 682,648	9.15%	\$ 207,097	2.78%	\$ 7,457,991
Liberal Arts	\$ 3,225,153	15.79%	\$ 10,608,648	51.94%	\$ 696,707	3.41%	\$ 562,271	2.75%	\$ 20,425,982
Library	\$ 888,125	10.61%	\$ -	0.00%	\$ 2,016,235	24.09%	\$ 863,316	10.32%	\$ 8,368,470
Nursing	\$ 744,987	15.32%	\$ 1,971,170	40.55%	\$ 342,747	7.05%	\$ 336,972	6.93%	\$ 4,861,606
Professional Psychology	\$ 612,346	14.87%	\$ 1,391,055	33.79%	\$ 424,253	10.31%	\$ 333,634	8.10%	\$ 4,116,644
Graduate Studies	\$ 342,681	5.91%	\$ 160,255	2.76%	\$ 705,994	12.17%	\$ 275,525	4.75%	\$ 5,803,149
Science & Mathematics	\$ 3,257,706	14.07%	\$ 9,915,121	42.83%	\$ 1,184,901	5.12%	\$ 778,654	3.36%	\$ 23,148,790
Sub Total	\$ 14,704,653	13.49%	\$ 40,169,277	36.86%	\$ 8,237,109	7.56%	\$ 4,612,439	4.23%	\$ 108,982,088
Total	\$ 25,031,588	9.79%	\$ 41,713,402	16.32%	\$ 29,005,535	11.35%	\$ 16,193,759	6.33%	\$ 255,640,396
Medicine	\$ 4,392,783	12.45%	\$ 10,756,501	30.48%	\$ 2,737,230	7.76%	\$ 2,066,104	5.85%	\$ 35,295,944

Note: Gross Budget is shown net of Cost Recoveries.

2. Staffing data by instructional and non-instructional colleges and divisions from FY 2006 to FY 2010
 - Faculty/staff FTE and ratio of student FTE to faculty/staff

Wright State University
Ratios of Faculty/Staff FTE and Student FTE

2010 Update
6/28/10

	Total Full Time Faculty FTE	Student FTE per Total Full Time Faculty FTE	Tenure-line Faculty FTE	Student FTE per Tenure-line Faculty FTE	Non Tenure-line Faculty FTE	FTE per Non Tenure-line Faculty FTE	Adjunct FTE	Grad Teach Asst. FTE	All Staff FTE	Student FTE per All Staff FTE	Clsfd. Staff FTE	Student FTE per Clsfd. Staff FTE	Unclsfd. Staff FTE	Student FTE per Unclsfd. Staff FTE	Fall Term Total Student FTE (SCH/15)	% GR SCH
	(a)	(b)	(c)	(d)	(e)	(f)	(g)	(h)	(i)	(j)	(k)	(l)	(m)	(n)	(o)	(p)
College Staffing Data (FY2006 - FY2010)																
Liberal Arts																
FY 2006	192.5	23.2	145.0	30.8	47.5	93.9	33.5	10.9	35.6	125.3	21.0	212.5	14.6	305.2	4,462	4%
FY 2007	190.3	23.7	138.8	32.5	51.5	87.6	36.8	8.9	33.6	134.3	21.3	211.9	12.3	366.9	4,513	3%
FY 2008	215.5	21.3	160.0	28.7	55.5	82.7	38.7	6.6	35.8	128.3	23.0	199.7	12.8	358.8	4,592	4%
FY 2009	216.5	22.4	162.0	29.9	54.5	89.0	49.2	11.6	37.2	130.3	23.9	202.7	13.3	365.0	4,851	3%
FY 2010	217.5	23.0	162.0	30.9	55.5	90.2	51.9	8.6	37.8	132.5	23.0	217.7	14.8	338.6	5,008	3%
Business																
FY 2006	66.0	22.7	56.0	26.8	10.0	149.9	10.9	0.0	27.5	54.5	15.3	98.1	12.3	122.3	1,499	17%
FY 2007	64.3	24.1	55.3	28.0	9.0	172.0	10.6	0.0	26.6	58.2	16.5	93.8	10.1	153.3	1,548	18%
FY 2008	71.3	21.9	60.3	25.9	11.0	141.8	11.6	0.0	28.6	54.5	17.5	89.1	11.1	140.5	1,559	18%
FY 2009	72.3	21.7	62.3	25.2	10.0	157.0	7.9	0.0	26.4	59.6	17.3	90.9	9.1	172.9	1,570	19%
FY 2010	71.8	22.6	60.8	26.7	11.0	147.6	6.4	0.0	26.9	60.4	17.8	91.3	9.1	178.8	1,623	22%
Education																
FY 2006	56.8	27.5	50.8	30.7	6.0	260.0	29.4	0.0	30.8	50.6	17.0	91.8	13.8	112.8	1,560	38%
FY 2007	65.1	23.7	54.1	28.6	11.0	140.5	25.5	0.3	30.8	50.2	20.0	77.3	10.8	143.1	1,546	38%
FY 2008	72.1	19.8	60.1	23.8	12.0	119.0	28.3	0.0	33.8	42.3	19.0	75.2	14.8	96.5	1,428	36%
FY 2009	72.8	19.2	59.8	23.4	13.0	107.5	40.3	0.0	33.5	41.7	20.0	69.9	13.5	103.5	1,398	37%
FY 2010	71.1	19.7	55.6	25.2	15.5	90.3	34.4	0.0	33.7	41.5	18.0	77.7	15.7	89.1	1,399	38%
Science & Math																
FY 2006	137.9	23.0	119.9	26.5	18.0	176.6	14.7	21.8	51.2	62.1	26.2	121.2	25.0	127.2	3,178	8%
FY 2007	125.2	25.1	112.2	28.0	13.0	241.8	12.3	23.1	47.8	65.7	24.5	128.3	23.3	134.9	3,143	8%
FY 2008	148.1	21.0	129.1	24.1	19.0	163.5	17.9	19.5	51.6	60.2	28.0	110.9	23.6	131.6	3,106	8%
FY 2009	147.1	22.1	129.1	25.1	18.0	180.2	18.2	25.4	51.8	62.6	26.5	122.4	25.3	128.0	3,244	8%
FY 2010	146.8	23.5	128.8	26.8	18.0	191.4	15.0	25.7	51.3	67.1	26.1	132.0	25.2	136.6	3,446	7%

Note: In FY 2007 vacancies are not included in the FTE count. In all other years the FTE count does include vacancies.

Data sources for Academic Faculty FTE:

Tenure-line Faculty, Full-Time Non Tenure-line Faculty, Classified Staff, and Unclassified Staff FTE are budgeted FTE (unrestricted base budget).

Adjunct FTE is calculated using the SSN's of Adjuncts from HR and merged with HEI files for Course Credit Hours (CCH) taught. 12 CCH equals 1 FTE.

Teaching Assistant FTE is based on HEI files. Each Graduate Teaching Assistant equals .33 FTE.

All Faculty and Staff FTE are listed according to where the FTE was expensed.

Wright State University

2010 Update

Ratios of Faculty/Staff FTE and Student FTE

6/28/10

	Total Full Time Faculty FTE	Student FTE per Total Full Time Faculty FTE	Tenure-line Faculty FTE	Student FTE per Tenure-line Faculty FTE	Non Tenure-line Faculty FTE	FTE per Non Tenure-line Faculty FTE	Adjunct FTE	Grad Teach Asst. FTE	All Staff FTE	Student FTE per All Staff FTE	Clsfd. Staff FTE	Student FTE per Clsfd. Staff FTE	Unclsfd. Staff FTE	Student FTE per Unclsfd. Staff FTE	Fall Term Total Student FTE (SCH/15)	% GR SCH
College Staffing Data (continued)																
Engineering & Computer Science																
FY 2006	63.2	15.3	56.2	17.3	7.0	138.5	15.0	10.3	29.2	33.2	12.4	78.2	16.8	57.7	970	32%
FY 2007	64.7	14.5	58.7	16.0	6.0	156.2	11.6	9.6	38.3	24.5	15.4	60.8	22.9	40.9	937	32%
FY 2008	74.5	14.2	67.5	15.6	7.0	150.9	12.5	4.6	41.1	25.7	17.0	62.1	24.1	43.8	1,056	32%
FY 2009	75.2	14.1	68.2	15.6	7.0	151.8	12.9	5.6	39.1	27.2	17.1	62.1	22.0	48.3	1,063	29%
FY 2010	78.4	14.0	70.4	15.6	8.0	137.0	10.3	7.6	39.7	27.6	17.3	63.3	22.4	48.9	1,096	26%
Nursing																
FY 2006	34.5	15.1	19.7	26.6	14.9	35.2	4.5	0.0	18.7	28.0	11.7	44.9	7.0	74.7	523	19%
FY 2007	32.7	16.6	21.0	25.9	11.7	46.6	3.6	0.0	15.4	35.3	8.9	61.0	6.5	83.5	544	18%
FY 2008	44.5	12.4	24.5	22.5	20.0	27.6	1.1	0.0	21.5	25.7	14.0	39.4	7.5	73.6	552	18%
FY 2009	45.5	12.4	25.5	22.1	20.0	28.2	0.5	0.0	23.4	24.1	13.9	40.6	9.5	59.3	564	17%
FY 2010	46.5	12.8	24.5	24.3	22.0	27.0	3.1	0.0	23.4	25.4	13.9	42.8	9.5	62.6	596	19%
Note: Student Health Services (CONHS) classified and unclassified staff FTE are included in Nursing.																
Nursing's adjunct FTE is understated in recent years due to a switch to non-credit bearing clinical sections which are taught primarily by adjuncts. (12 CCH = 1 Adjunct FTE)																
Professional Psychology																
FY 2006	15.0	8.7	15.0	8.7	0.0	-	0.0	0.0	19.3	6.8	12.0	10.9	7.3	17.9	131	100%
FY 2007	15.0	8.2	15.0	8.2	0.0	-	0.0	0.0	18.3	6.7	10.0	12.3	8.3	14.8	123	100%
FY 2008	18.0	6.4	18.0	6.4	0.0	-	1.9	0.0	21.3	5.4	11.0	10.5	10.3	11.2	116	100%
FY 2009	20.0	5.3	19.0	5.6	1.0	106.9	2.0	0.0	23.5	4.6	12.0	8.9	11.5	9.3	107	100%
FY 2010	20.0	5.7	18.0	6.3	2.0	56.8	2.1	0.0	23.7	4.8	12.0	9.5	11.7	9.7	114	100%
University College (Instructional)																
FY 2006	0.0	-	0.0	-	0.0	-	10.5	0.3	7.3	70.2	0.0	-	7.3	70.2	511	0%
FY 2007	0.0	-	0.0	-	0.0	-	5.3	6.9	6.6	57.5	1.5	-	5.1	74.5	380	0%
FY 2008	0.0	-	0.0	-	0.0	-	10.7	0.0	7.1	67.5	2.0	-	5.1	93.9	479	0%
FY 2009	0.0	-	0.0	-	0.0	-	12.0	0.0	6.0	77.8	1.5	-	4.4	104.2	463	0%
FY 2010	0.0	-	0.0	-	0.0	-	11.2	0.0	6.0	83.9	1.5	330.4	4.4	112.4	499	0%
Lake Campus (Instructional)																
FY 2006	22.0	29.3	18.0	35.8	4.0	161.3	16.5	0.0	5.9	108.6	3.0	215.0	2.9	219.4	645	5%
FY 2007	23.7	25.0	20.7	28.6	3.0	197.6	16.2	0.0	5.8	102.2	2.8	211.7	3.0	197.6	593	6%
FY 2008	26.7	21.7	22.7	25.5	4.0	145.0	21.0	0.0	6.8	85.9	2.8	210.9	4.0	145.0	580	9%
FY 2009	26.7	25.2	23.7	28.4	3.0	224.0	14.3	0.0	6.8	99.6	2.8	244.4	4.0	168.0	672	7%
FY 2010	26.7	32.2	21.7	39.7	5.0	171.9	15.2	0.0	6.8	127.4	2.8	312.6	4.0	214.9	860	5%

Note: In FY 2007 vacancies are not included in the FTE count. In all other years the FTE count does include vacancies.

Wright State University

2010 Update

Ratios of Faculty/Staff FTE and Student FTE

6/28/10

	Total Full Time Faculty FTE	Student FTE per Total Full Time Faculty FTE	Tenure-line Faculty FTE	Student FTE per Tenure-line Faculty FTE	Non Tenure-line Faculty FTE	FTE per Non Tenure-line Faculty FTE	Adjunct FTE	Grad Teach Asst. FTE	All Staff FTE	Student FTE per All Staff FTE	Clsfd. Staff FTE	Student FTE per Clsfd. Staff FTE	Unclsfd. Staff FTE	Student FTE per Unclsfd. Staff FTE	Fall Term Total Student FTE (SCH/15)	% GR SCH
College Staffing Data (continued)																
Main Campus (excluding SoM, SoPP & University College-Instructional)																
FY 2006	550.9	22.1	447.5	27.2	103.4	117.9	108.0	43.0	193.1	63.2	103.6	117.7	89.5	136.2	12,191	14%
FY 2007	542.3	22.6	440.1	27.8	102.2	119.7	100.3	41.9	192.5	63.5	106.6	114.7	85.9	142.4	12,231	14%
FY 2008	626.0	19.6	501.5	24.5	124.5	98.8	110.1	30.7	212.4	57.9	118.5	103.8	93.9	130.9	12,294	13%
FY 2009	629.4	20.2	506.8	25.0	122.6	103.5	129.1	42.6	211.5	60.0	118.7	106.9	92.7	136.9	12,690	13%
FY 2010	632.2	20.8	502.1	26.2	130.1	101.3	121.1	41.9	212.8	61.9	116.1	113.4	96.7	136.2	13,168	13%
Main Campus (excluding SoM)																
FY 2006	565.9	22.7	462.5	27.7	103.4	124.1	118.5	43.3	219.7	58.4	115.6	111.1	104.1	123.3	12,833	14%
FY 2007	557.3	22.8	455.1	28.0	102.2	124.6	105.6	48.8	217.4	58.6	118.1	107.8	99.3	128.2	12,733	14%
FY 2008	644.0	20.0	519.5	24.8	124.5	103.5	122.7	30.7	240.8	53.5	131.5	98.0	109.3	117.9	12,889	14%
FY 2009	649.4	20.4	525.8	25.2	123.6	107.3	143.1	42.6	240.9	55.0	132.3	100.3	108.7	122.0	13,259	13%
FY 2010	652.2	21.1	520.1	26.5	132.1	104.4	134.4	41.9	242.5	56.8	129.6	106.3	112.8	122.2	13,781	13%
Total University (excluding SoM)																
FY 2006	587.9	22.9	480.5	28.0	107.4	125.5	135.0	43.3	225.6	59.7	118.6	113.7	107.0	125.9	13,478	13%
FY 2007	581.0	22.9	475.8	28.0	105.2	126.7	121.8	48.8	223.2	59.7	120.9	110.2	102.3	130.3	13,326	14%
FY 2008	670.7	20.1	542.2	24.8	128.5	104.8	143.7	30.7	247.6	54.4	134.3	100.3	113.3	118.9	13,469	14%
FY 2009	676.0	20.6	549.5	25.4	126.6	110.1	157.5	42.6	247.7	56.3	135.0	103.2	112.7	123.7	13,931	13%
FY 2010	678.8	21.6	541.8	27.0	137.1	106.8	149.6	41.9	249.2	58.7	132.4	110.6	116.8	125.3	14,641	13%

Note: In FY 2007 vacancies are not included in the FTE count. In all other years the FTE count does include vacancies.

Wright State University
Ratios of Faculty/Staff FTE and Student FTE

2010 Update
6/28/10

	Total Full Time Faculty FTE	Student FTE per Total Full Time Faculty FTE	Tenure-line Faculty FTE	Student FTE per Tenure-line Faculty FTE	Non Tenure-line Faculty FTE	FTE per Non Tenure-line Faculty FTE	Adjunct FTE	Grad Teach Asst. FTE	All Staff FTE	Student FTE per All Staff FTE	Clsfd. Staff FTE	Student FTE per Clsfd. Staff FTE	Uncclsfd. Staff FTE	Student FTE per Uncclsfd. Staff FTE	Fall Term Total Student FTE (SCH/15)	% GR SCH
Administrative Staffing Data (FY2006 - FY2010)																
VP Advancement																
FY 2006	0.0	-	0.0	-	0.0	-	0.0	0.0	43.0	298.4	10.7	1199.4	32.3	397.3	12,833	14%
FY 2007	0.0	-	0.0	-	0.0	-	0.0	0.0	46.4	274.4	12.0	1061.1	34.4	370.0	12,733	14%
FY 2008	0.0	-	0.0	-	0.0	-	0.0	0.0	28.8	447.5	9.2	1401.0	19.6	657.6	12,889	14%
FY 2009	0.0	-	0.0	-	0.0	-	0.0	0.0	34.7	382.6	11.0	1205.4	23.7	560.4	13,259	13%
FY 2010	0.0	-	0.0	-	0.0	-	0.0	0.0	33.2	415.7	10.0	1378.1	23.2	595.3	13,781	13%
VP Business & Fiscal Affairs																
FY 2006	0.0	-	0.0	-	0.0	-	0.0	0.0	316.8	40.5	241.6	53.1	75.2	170.7	12,833	14%
FY 2007	0.0	-	0.0	-	0.0	-	0.0	0.0	303.7	41.9	221.2	57.6	82.5	154.3	12,733	14%
FY 2008	0.0	-	0.0	-	0.0	-	0.0	0.0	318.1	40.5	231.0	55.8	87.1	148.1	12,889	14%
FY 2009	0.0	-	0.0	-	0.0	-	0.0	0.0	317.5	41.8	228.5	58.0	89.0	149.0	13,259	13%
FY 2010	0.0	-	0.0	-	0.0	-	0.0	0.0	316.5	43.5	226.5	60.9	90.0	153.1	13,781	13%
VP Student Affairs & Enrollment Services																
FY 2006	0.0	-	0.0	-	0.0	-	0.0	0.0	185.2	69.3	69.7	184.1	115.5	111.2	12,833	14%
FY 2007	0.0	-	0.0	-	0.0	-	0.0	0.0	188.9	67.4	77.1	165.2	111.8	113.9	12,733	14%
FY 2008	-	-	-	-	-	-	-	-	-	-	-	-	-	-	-	-
FY 2009	-	-	-	-	-	-	-	-	-	-	-	-	-	-	-	-
FY 2010	-	-	-	-	-	-	-	-	-	-	-	-	-	-	-	-
VP Student Affairs																
FY 2008	0.0	-	0.0	-	0.0	-	0.0	0.0	165.7	77.8	63.0	204.6	102.7	125.5	12,889	14%
FY 2009	0.0	-	0.0	-	0.0	-	0.0	0.0	166.7	79.5	63.3	209.5	103.4	128.2	13,259	13%
FY 2010	0.0	-	0.0	-	0.0	-	0.0	0.0	165.8	83.1	63.0	218.6	102.8	134.1	13,781	13%
Enrollment Management Division **																
FY 2008	0.0	-	0.0	-	0.0	-	0.0	0.0	64.8	198.9	32.8	393.0	32.0	402.8	12,889	14%
FY 2009	0.0	-	0.0	-	0.0	-	0.0	0.0	67.8	195.6	31.8	417.0	36.0	368.3	13,259	13%
FY 2010	0.0	-	0.0	-	0.0	-	0.0	0.0	68.8	200.3	31.8	433.4	37.0	372.5	13,781	13%
President																
FY 2006	1.0	12833.2	1.0	12833.2	0.0	-	0.0	0.0	8.8	1458.3	3.0	4277.7	5.8	2212.6	12,833	14%
FY 2007	2.0	6366.7	2.0	6366.7	0.0	-	0.0	0.0	7.7	1651.5	6.5	1956.0	1.2	10611.1	12,733	14%
FY 2008	2.0	6444.5	2.0	6444.5	0.0	-	0.0	0.0	10.7	1204.6	8.5	1516.3	2.2	5858.6	12,889	14%
FY 2009	2.0	6629.6	1.0	13259.3	1.0	-	0.0	0.0	9.7	1365.5	7.5	1765.5	2.2	6026.9	13,259	13%
FY 2010	2.0	6890.5	1.0	13781.0	1.0	13781.0	0.0	0.0	10.2	1351.1	8.0	1722.6	2.2	6264.1	13,781	13%
Library																
FY 2006	0.0	-	0.0	-	0.0	-	0.0	0.0	71.6	179.2	30.3	423.5	41.3	310.7	12,833	14%
FY 2007	0.0	-	0.0	-	0.0	-	0.0	0.0	68.3	186.4	30.6	416.1	37.7	337.8	12,733	14%
FY 2008	0.0	-	0.0	-	0.0	-	0.0	0.0	72.2	178.5	31.1	414.4	41.1	313.6	12,889	14%
FY 2009	0.0	-	0.0	-	0.0	-	0.0	0.0	70.7	187.6	29.6	447.5	41.1	323.0	13,259	13%
FY 2010	0.0	-	0.0	-	0.0	-	0.0	0.0	70.7	195.0	29.6	465.1	41.1	335.7	13,781	13%

Note: In FY 2007 vacancies are not included in the FTE count. In all other years the FTE count does include vacancies.

** In FY 2008 the Enrollment Management Division was created from Orgn's that were in the VP Student Affairs & Enrollment Services (41.8 FTE) and the VP Curriculum & Instruction (22 FTE) category in FY 2007.

Wright State University
Ratios of Faculty/Staff FTE and Student FTE

2010 Update
6/28/10

	Total Full Time Faculty FTE	Student FTE per Total Full Time Faculty FTE	Tenure-line Faculty FTE	Student FTE per Tenure-line Faculty FTE	Non Tenure-line Faculty FTE	FTE per Non Tenure-line Faculty FTE	Adjunct FTE	Grad Teach Asst. FTE	All Staff FTE	Student FTE per All Staff FTE	Clsfd. Staff FTE	Student FTE per Clsfd. Staff FTE	Uncclsfd. Staff FTE	Student FTE per Uncclsfd. Staff FTE	Fall Term Total Student FTE (SCH/15)	% GR SCH
Administrative Staffing Data (continued)																
Research & Graduate Studies																
FY 2006	1.0	12833.2	1.0	12833.2	0.0	-	0.0	0.0	20.8	618.5	8.8	1466.7	12.0	1069.4	12,833	14%
FY 2007	2.0	6366.7	2.0	6366.7	0.0	-	0.0	0.0	25.0	509.3	8.0	1591.7	17.0	749.0	12,733	14%
FY 2008	1.0	12888.9	1.0	12888.9	0.0	-	0.0	0.0	30.0	429.6	10.0	1288.9	20.0	644.4	12,889	14%
FY 2009	2.1	6254.4	1.1	11838.6	1.0	-	0.0	0.0	34.0	390.0	10.0	1325.9	24.0	552.5	13,259	13%
FY 2010	2.1	6625.5	1.1	12760.2	1.0	13781.0	0.0	0.0	32.8	420.8	9.0	1531.2	23.8	580.3	13,781	13%
University College (Non-Instructional)																
FY 2006	0.0	-	0.0	-	0.0	-	0.0	0.0	21.6	595.0	5.5	2333.3	16.1	798.6	12,833	14%
FY 2007	1.0	-	1.0	-	0.0	-	0.0	0.0	21.1	603.5	4.3	2961.2	16.8	757.9	12,733	14%
FY 2008	1.0	-	1.0	-	0.0	-	0.0	0.0	24.6	523.9	6.8	1895.4	17.8	724.1	12,889	14%
FY 2009	1.0	-	1.0	-	0.0	-	0.0	0.0	24.9	532.1	5.8	2302.0	19.2	692.0	13,259	13%
FY 2010	1.0	13781.0	1.0	13781.0	0.0	-	0.0	0.0	24.9	553.0	5.8	2392.5	19.2	719.3	13,781	13%
VP Curriculum & Instruction (less University College)																
FY 2006	6.8	1901.2	6.8	1901.2	0.0	-	1.3	0.0	77.2	166.3	40.2	319.6	37.0	346.8	12,833	14%
FY 2007	6.8	1872.5	5.8	2195.4	1.0	-	0.3	0.3	83.8	151.9	41.3	308.3	42.5	299.6	12,733	14%
FY 2008	6.8	1895.4	5.8	2222.2	1.0	-	0.3	0.0	71.7	179.8	31.3	411.8	40.4	319.0	12,889	14%
FY 2009	6.8	1964.3	2.8	4821.6	4.0	-	0.7	0.0	74.7	177.5	32.3	410.9	42.4	312.5	13,259	13%
FY 2010	6.8	2041.6	2.8	5011.3	4.0	3445.3	0.7	0.0	73.7	187.0	32.3	427.1	41.4	332.6	13,781	13%
CaTS																
FY 2006	0.0	-	0.0	-	0.0	-	0.0	0.0	89.0	144.2	19.0	675.4	70.0	183.3	12,833	14%
FY 2007	0.0	-	0.0	-	0.0	-	0.0	0.0	88.0	144.7	33.0	385.9	55.0	231.5	12,733	14%
FY 2008	0.0	-	0.0	-	0.0	-	0.0	0.0	97.0	132.9	38.0	339.2	59.0	218.5	12,889	14%
FY 2009	0.0	-	0.0	-	0.0	-	0.0	0.0	101.0	131.3	40.0	331.5	61.0	217.4	13,259	13%
FY 2010	0.0	-	0.0	-	0.0	-	0.0	0.0	101.0	136.4	39.0	353.4	62.0	222.3	13,781	13%
Provost (Less CaTS, VP Curriculum & Univ. College)																
FY 2006	4.0	3208.3	4.0	3208.3	0.0	-	0.0	0.0	39.5	324.9	13.0	987.2	26.5	484.3	12,833	14%
FY 2007	2.0	6366.7	2.0	6366.7	0.0	-	0.0	0.0	37.3	341.0	13.3	954.5	24.0	530.6	12,733	14%
FY 2008	2.0	6444.5	2.0	6444.5	0.0	-	0.0	0.0	63.7	202.3	19.9	647.7	43.8	294.3	12,889	14%
FY 2009	2.0	6629.6	2.0	6629.6	0.0	-	0.0	0.0	64.8	204.6	21.5	617.3	43.3	306.1	13,259	13%
FY 2010	2.5	5512.4	2.5	5512.4	0.0	-	0.0	0.0	63.3	217.8	21.5	641.6	41.8	329.7	13,781	13%
Lake Campus (Non-Instructional)																
FY 2006	0.0	-	0.0	-	0.0	-	0.0	0.0	16.4	39.4	4.5	143.0	11.9	54.4	645	5%
FY 2007	0.0	-	0.0	-	0.0	-	0.0	0.0	15.3	38.7	4.5	131.7	10.8	54.9	593	6%
FY 2008	0.0	-	0.0	-	0.0	-	0.0	0.0	17.9	32.4	6.8	85.3	11.1	52.2	580	9%
FY 2009	0.0	-	0.0	-	0.0	-	0.0	0.0	18.8	35.8	6.8	99.6	12.1	55.8	672	7%
FY 2010	0.0	-	0.0	-	0.0	-	0.0	0.0	18.9	45.5	6.8	127.4	12.2	70.8	860	5%

Note: In FY 2007 vacancies are not included in the FTE count. In all other years the FTE count does include vacancies.

Wright State University

2010 Update

Ratios of Faculty/Staff FTE and Student FTE

6/28/10

	Total Full Time Faculty FTE	Student FTE per Total Full Time Faculty FTE	Tenure-line Faculty FTE	Student FTE per Tenure-line Faculty FTE	Non Tenure-line Faculty FTE	FTE per Non Tenure-line Faculty FTE	Adjunct FTE	Grad Teach Asst. FTE	All Staff FTE	Student FTE per All Staff FTE	Clsfd. Staff FTE	Student FTE per Clsfd. Staff FTE	Unclsfd. Staff FTE	Student FTE per Unclsfd. Staff FTE	Fall Term Total Student FTE (SCH/15)	% GR SCH
Total Administrative																
FY 2006	12.8	1006.5	12.8	1006.5	0.0	-	1.3	0.0	889.7	14.4	446.2	28.8	443.5	28.9	12,833	14%
FY 2007	13.8	922.7	12.8	994.8	1.0	12733.3	0.3	0.3	885.6	14.4	451.9	28.2	433.7	29.4	12,733	14%
FY 2008	12.8	1006.9	11.8	1092.3	1.0	12888.9	0.3	0.0	965.2	13.4	488.4	26.4	476.8	27.0	12,889	14%
FY 2009	13.9	956.0	7.9	1684.8	6.0	2209.9	0.7	0.0	985.2	13.5	487.9	27.2	497.3	26.7	13,259	13%
FY 2010	14.3	961.7	8.3	1654.4	6.0	2296.8	0.7	0.0	979.6	14.1	483.2	28.5	496.5	27.8	13,781	13%
Total Administrative and Total Main Campus Colleges (excluding SoM, SoPP & University College-Instructional)																
FY 2006	563.7	21.6	460.3	26.5	103.4	117.9	109.3	43.0	1082.7	11.3	549.8	22.2	533.0	22.9	12,191	14%
FY 2007	556.1	22.0	452.9	27.0	103.2	118.5	100.6	42.2	1078.1	11.3	558.5	21.9	519.6	23.5	12,231	14%
FY 2008	638.8	19.2	513.3	24.0	125.5	98.0	110.4	30.7	1177.6	10.4	606.9	20.3	570.7	21.5	12,294	13%
FY 2009	643.2	19.7	514.7	24.7	128.6	98.7	129.8	42.6	1196.7	10.6	606.7	20.9	590.0	21.5	12,690	13%
FY 2010	646.5	20.4	510.5	25.8	136.1	96.8	121.8	41.9	1192.5	11.0	599.3	22.0	593.2	22.2	13,168	13%
Total Administrative and Total Main Campus Colleges (excluding SoM)																
FY 2006	578.7	22.2	475.3	27.0	103.4	124.1	119.8	43.3	1109.4	11.6	561.8	22.8	547.6	23.4	12,833	14%
FY 2007	571.1	22.3	467.9	27.2	103.2	123.4	106.0	49.2	1103.0	11.5	570.0	22.3	533.0	23.9	12,733	14%
FY 2008	656.8	19.6	531.3	24.3	125.5	102.7	123.0	30.7	1206.0	10.7	619.9	20.8	586.1	22.0	12,889	14%
FY 2009	663.2	20.0	533.7	24.8	129.6	102.3	143.8	42.6	1226.1	10.8	620.2	21.4	605.9	21.9	13,259	13%
FY 2010	666.5	20.7	528.5	26.1	138.1	99.8	135.1	41.9	1222.1	11.3	612.8	22.5	609.3	22.6	13,781	13%
Total Administrative and Total University Colleges (excluding SoM)																
FY 2006	600.7	22.4	493.3	27.3	107.4	125.5	136.3	43.3	1115.3	12.1	564.8	23.9	550.5	24.5	13,478	13%
FY 2007	594.8	22.4	488.6	27.3	106.2	125.5	122.1	49.2	1108.8	12.0	572.8	23.3	536.0	24.9	13,326	14%
FY 2008	683.5	19.7	554.0	24.3	129.5	104.0	144.0	30.7	1212.7	11.1	622.7	21.6	590.1	22.8	13,469	14%
FY 2009	689.9	20.2	557.4	25.0	132.6	105.1	158.1	42.6	1232.9	11.3	622.9	22.4	609.9	22.8	13,931	13%
FY 2010	693.2	21.1	550.1	26.6	143.1	102.3	150.3	41.9	1228.9	11.9	615.6	23.8	613.3	23.9	14,641	13%

Note: In FY 2007 vacancies are not included in the FTE count. In all other years the FTE count does include vacancies.

Data sources for Academic Faculty FTE:

Tenure-line Faculty, Full-Time Non Tenure-line Faculty, Classified Staff, and Unclassified Staff FTE are budgeted FTE (unrestricted base budget).

Adjunct FTE is calculated using the SSN's of Adjuncts from HR and merged with HEI files for Course Credit Hours (CCH) taught. 12 CCH equals 1 FTE.

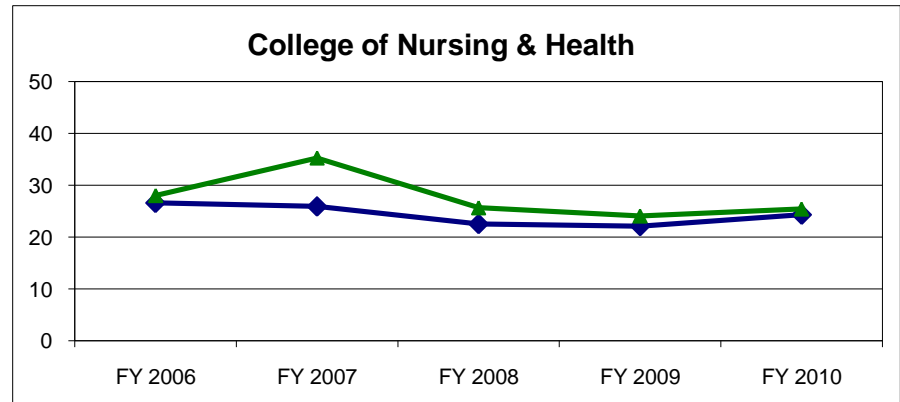
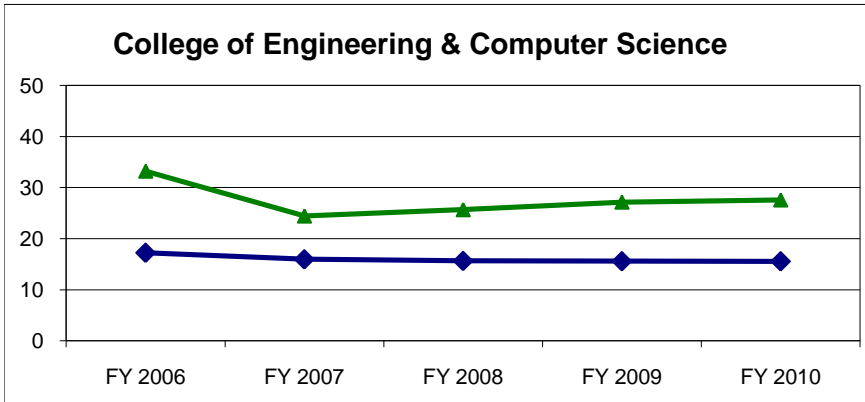
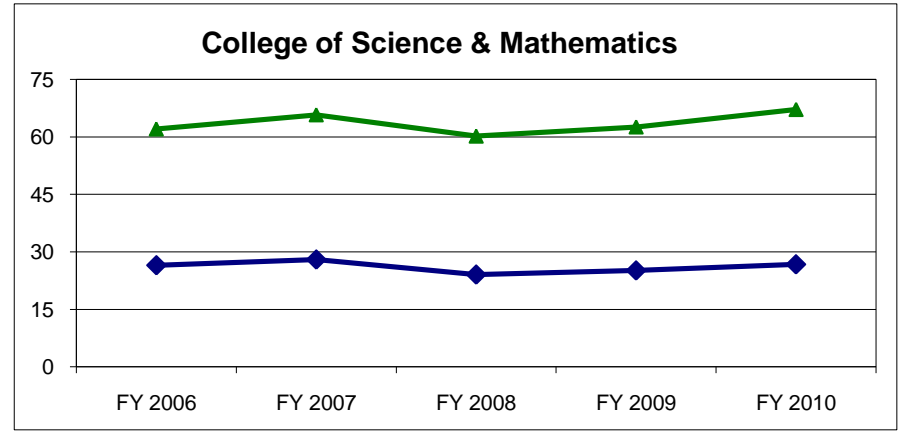
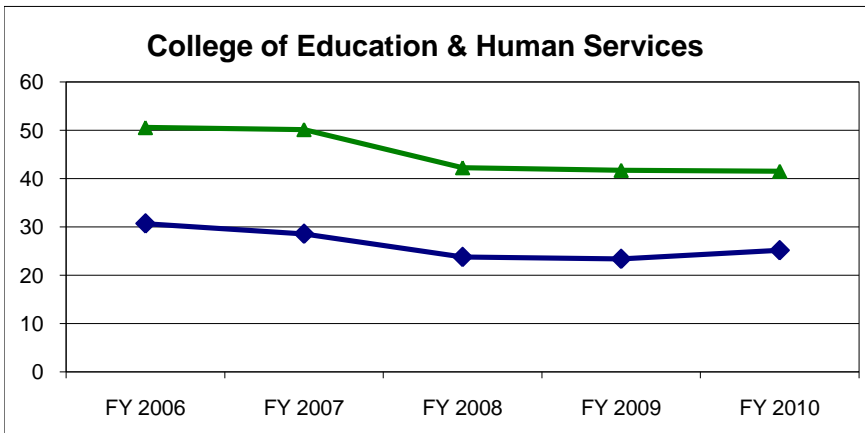
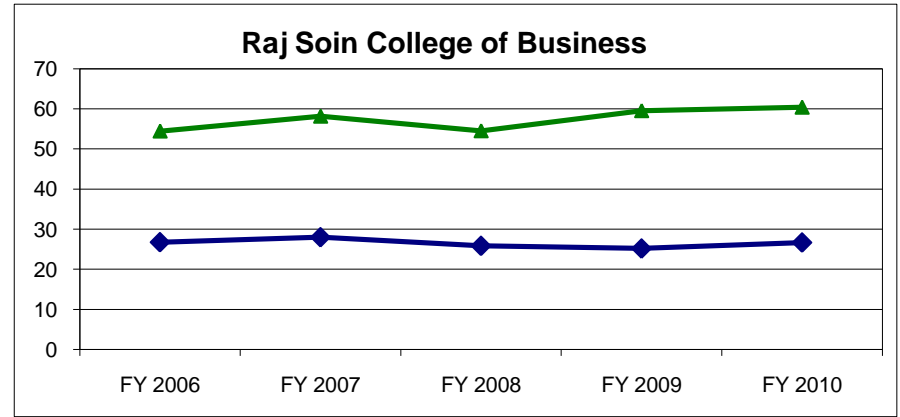
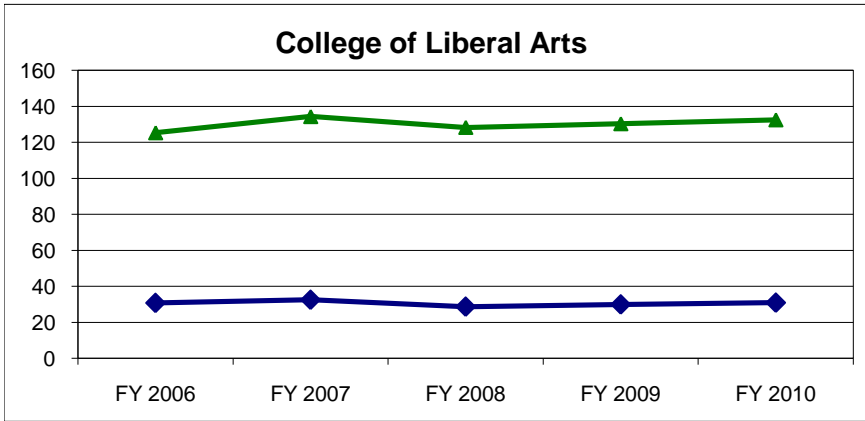
Teaching Assistant FTE is based on HEI files. Each Graduate Teaching Assistant equals .33 FTE.

All Faculty and Staff FTE are listed according to where the FTE was expensed.

3. Comparison of student FTE per various faculty/staff categories by college (FY 2006 – FY 2010)
 - Graphical representation of student **FTE** per faculty/staff by college
 - Graphical representation of student **FTE** per faculty/staff by employee type

Wright State University
 Comparison of Student FTE per Faculty/Staff by College

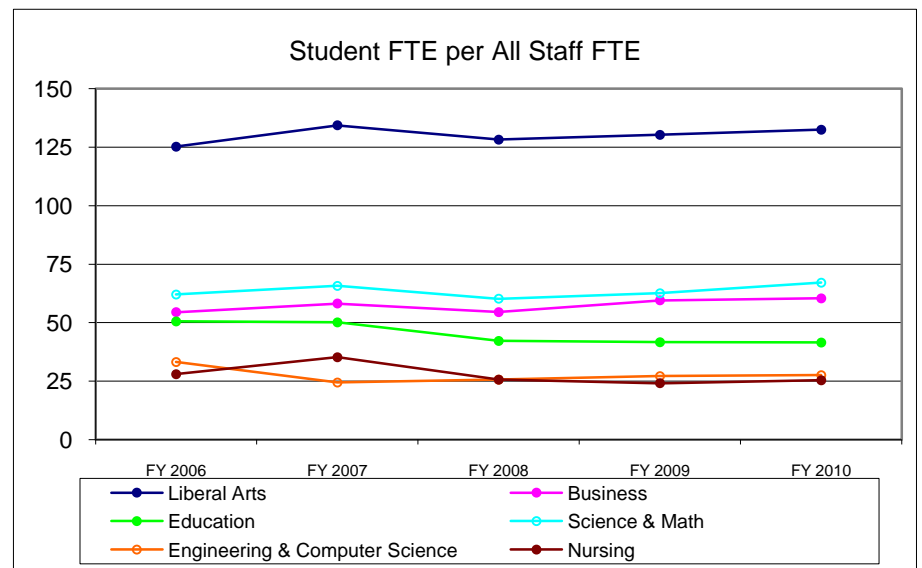
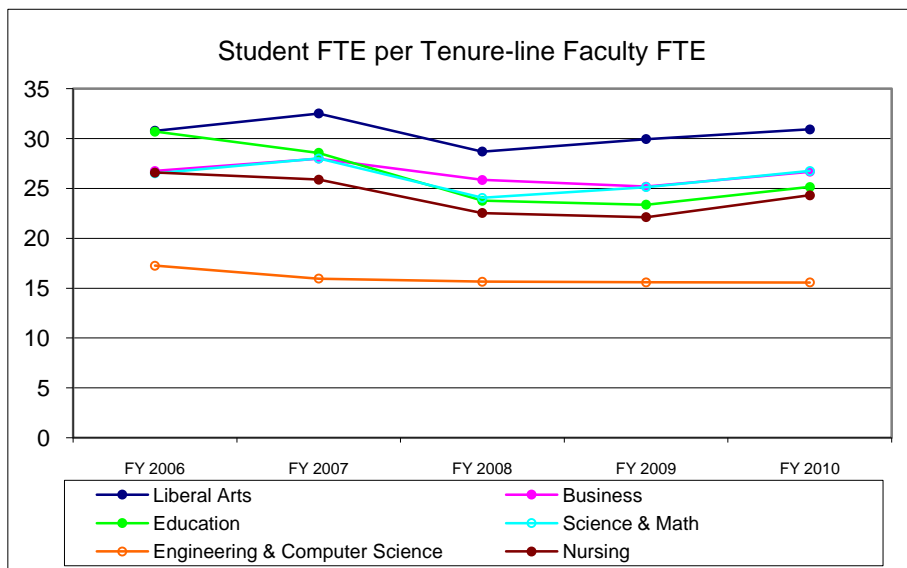
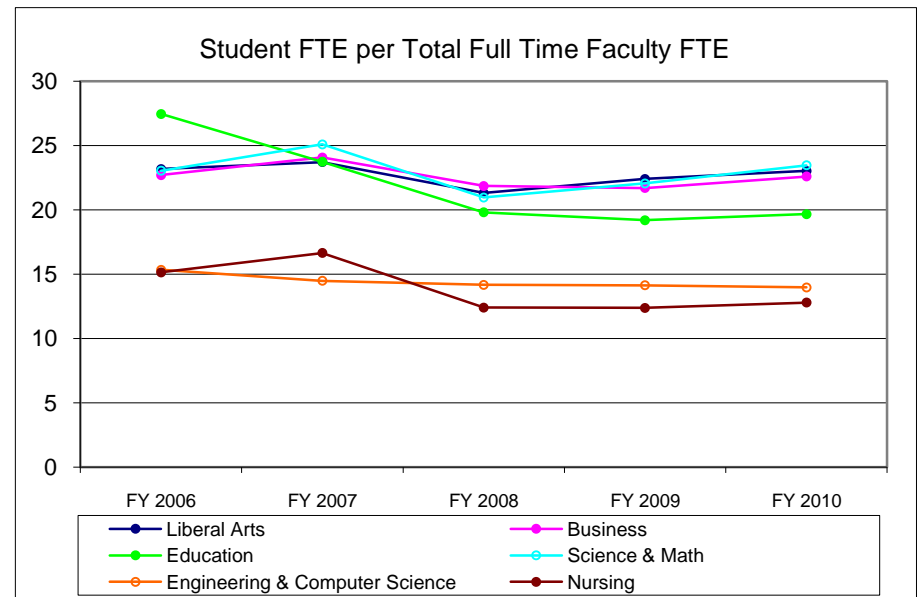
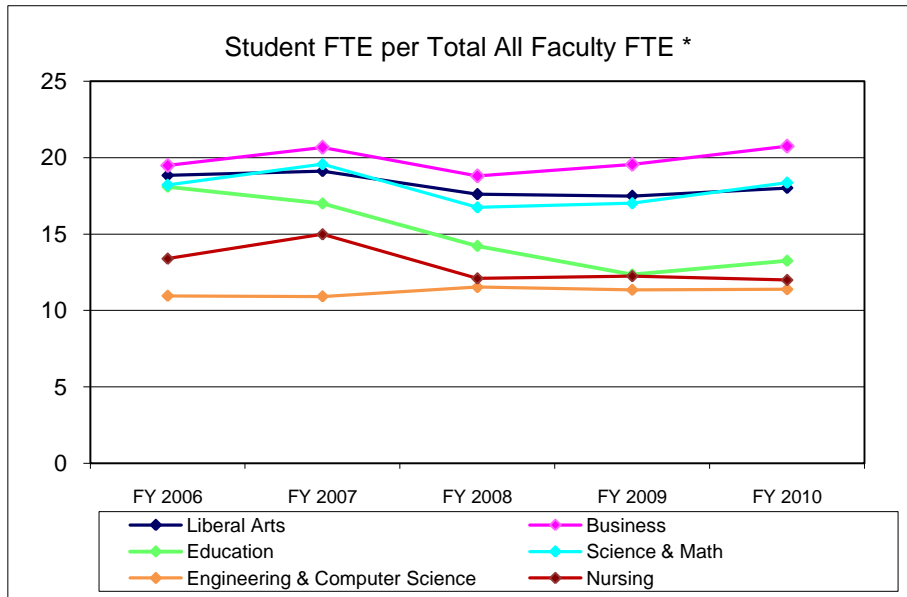
DRAFT
 2010 Update
 6/28/10



▲ Students FTE's per Classified & Unclassified Staff FTE
 ◆ Student FTE's per Tenure-line Faculty FTE

Wright State University
Comparison of Student FTE per Faculty/Staff

DRAFT
 2010 Update
 6/28/10



* Total All Faculty FTE includes Tenure-line, Non Tenure-line, Adjuncts (12 CCH = 1 FTE), and Graduate Teaching Assistants (1 Headcount = .33 FTE).

4. FY 2009 and FY 2010 faculty/staff ratios sorted by college and rank
 - Student **FTE** per various faculty/staff categories

WSU Staffing Analysis
FY 2010 Student FTE per Faculty/Staff Ratios

DRAFT
 2010 Update
 6/28/10

Sorted by College:

	(A) Student FTE per All Faculty*	(B) Student FTE per Total Full Time Faculty FTE	(C) Student FTE per Tenure-line Faculty FTE	(D) Student FTE per All Staff FTE (E+F)	(E) Student FTE per Clsfd. Staff FTE	(F) Student FTE per Unclsfd.Staff FTE	(G) Student FTE per All Faculty* & All Staff	(H) All Faculty FTE per All Staff FTE
Liberal Arts	18.0	23.0	30.9	132.5	217.7	338.6	15.9	7.4
Business	20.7	22.6	26.7	60.4	91.3	178.8	15.4	2.9
Education	13.3	19.7	25.2	41.5	77.7	89.1	10.1	3.1
Sci&Math	18.4	23.5	26.8	67.1	132.0	136.6	14.4	3.7
Engineering	11.4	14.0	15.6	27.6	63.3	48.9	8.1	2.4
Nursing	12.0	12.8	24.3	25.4	42.8	62.6	8.2	2.1
Lake Campus	20.5	32.2	39.7	127.4	312.6	214.9	17.7	6.2

Sorted by Rank:

(A) Student FTE per All Faculty*	(B) Student FTE per Total Full Time Faculty FTE	(C) Student FTE per Tenure-line Faculty FTE	(D) Student FTE per All Staff FTE (E+F)	(E) Student FTE per Clsfd. Staff FTE	(F) Student FTE per Unclsfd.Staff FTE	(G) Student FTE per All Faculty* & All Staff	(H) All Faculty FTE per All Staff FTE
20.7	32.2	39.7	132.5	312.6	338.6	17.7	7.4
20.5	23.5	30.9	127.4	217.7	214.9	15.9	6.2
18.4	23.0	26.8	67.1	132.0	178.8	15.4	3.7
18.0	22.6	26.7	60.4	91.3	136.6	14.4	2.9
13.3	19.7	25.2	41.5	77.7	89.1	10.1	3.1
12.0	14.0	24.3	27.6	63.3	62.6	8.1	2.4
11.4	12.8	15.6	25.4	42.8	48.9	8.2	2.1

□ Liberal Arts
 □ Education
 □ Business
 □ Sci&Math
 □ Engineering
 □ Lake Campus
 □ Nursing

* All Faculty FTE includes Tenure-line, Non Tenure-line, Adjuncts (12 CCH = 1 FTE), and Teaching Assistants (1 Headcount = .33 FTE).

WSU Staffing Analysis
FY 2009 Student FTE per Faculty/Staff Ratios

DRAFT

2009 Update

6/17/09 & 10/30/09 Adjunct /GTA

Sorted by College:

	(A) Student FTE per All Faculty*	(B) Student FTE per Total Full Time Faculty FTE	(C) Student FTE per Tenure-line Faculty FTE	(D) Student FTE per All Staff FTE (E+F)	(E) Student FTE per Clsfd. Staff FTE	(F) Student FTE per Unclsfd.Staff FTE	(G) Student FTE per All Faculty* & All Staff	(H) All Faculty FTE per All Staff FTE
Liberal Arts	17.5	22.4	29.9	130.3	202.7	365.0	15.4	7.4
Business	19.6	21.7	25.2	59.6	90.9	172.9	14.7	3.0
Education	12.4	19.2	23.4	41.7	69.9	103.5	9.5	3.4
Sci&Math	17.0	22.1	25.1	62.6	122.4	128.0	13.4	3.7
Engineering	11.3	14.1	15.6	27.2	62.1	48.3	8.0	2.4
Nursing	12.3	12.4	22.1	24.1	40.6	59.3	8.1	2.0
Lake Campus	16.4	25.2	28.4	99.6	244.4	168.0	14.1	6.1

Sorted by Rank:

(A) Student FTE per All Faculty*	(B) Student FTE per Total Full Time Faculty FTE	(C) Student FTE per Tenure-line Faculty FTE	(D) Student FTE per All Staff FTE (E+F)	(E) Student FTE per Clsfd. Staff FTE	(F) Student FTE per Unclsfd.Staff FTE	(G) Student FTE per All Faculty* & All Staff	(H) All Faculty FTE per All Staff FTE
19.6	25.2	29.9	130.3	244.4	365.0	14.1	7.4
17.5	22.4	28.4	99.6	202.7	172.9	15.4	6.1
17.0	22.1	25.2	62.6	122.4	168.0	13.4	3.7
16.4	21.7	25.1	59.6	90.9	128.0	14.7	3.0
12.4	19.2	23.4	41.7	69.9	103.5	9.5	3.4
12.3	14.1	22.1	27.2	62.1	59.3	8.0	2.4
11.3	12.4	15.6	24.1	40.6	48.3	8.1	2.0

Liberal Arts
 Education
 Business
 Sci&Math
 Engineering
 Lake Campus
 Nursing

* All Faculty FTE includes Tenure-line, Non Tenure-line, Adjuncts (12 CCH = 1 FTE), and Teaching Assistants (1 Headcount = .33 FTE).

5. Wright State University Main Campus as compared to the median for the 13 state supported University Main Campuses
- Student credit hours taught to undergraduates by faculty appointment status (Fall 2002 – Fall 200_)
 - Ratio of faculty headcount to student FTE/headcount ratio for tenure-line and all full-time faculty (FY2007-08 & FY2008-09).

Wright State University Main Campus as Compared to the Median for the 13 State Supported University Main Campuses

Percent of All Undergraduate Student Credit Hours Taught by Faculty Appointment Status

		Fall 2002		Fall 2003		Fall 2004		Fall 2005		Fall 2006		Fall 2007		Fall 2008	
		WSU	Percentage Points from Median	WSU	Percentage Points from Median	WSU	Percentage Points from Median	WSU	Percentage Points from Median	WSU	Percentage Points from Median	WSU	Percentage Points from Median	WSU	Percentage Points from Median
Appointment Status	Percent SCH Taught by Full-time Faculty	67%	+4	68%	+2	69%	+1	70%	+6	73%	+9	70%	+3	Data not yet available	
	Percent SCH Taught by Part-time Faculty	25%	0	24%	-2	24%	0	23%	-1	23%	0	25%	0	Data not yet available	
	Percent SCH taught by GA	8%	+1	8%	0	7%	0	7%	0	4%	-2	5%	-1	Data not yet available	

Average Class Section Size - All Students

		FY 2003		FY 2004		FY 2005		FY 2006		FY 2007		FY 2008		FY 2008	
		WSU	Variance from Median	WSU	Variance from Median	WSU	Variance from Median	WSU	Variance from Median	WSU	Variance from Median	WSU	Variance from Median	WSU	Variance from Median
All Students	Avg. Class Section Size	16	0	15	-1	15	0	14	-1	15	0	15	0	15	-1

Percentage of First Year Students Taking Any Course Section Taught by Tenured or Tenure Track Faculty			
FY 2008 WSU - Main Campus	88%	Percentage Points from the Median	-5%

Wright State University
Ohio Main Campuses
Faculty Comparative Data
FY 2008-09

DRAFT
2010 Update
6/15/10

Full, Associate, & Assistant Professors

	Full, Associate, & Assistant Professor Headcount	All Terms Student FTE		Fall Term Student Headcount	
		#	Ratio**	#	Ratio**
Cincinnati	1,194	24,650	20.6	29,566	24.8
Ohio State	2,232	54,666	24.5	54,551	24.4
Cleveland State	497	12,289	24.7	15,438	31.1
Miami	681	17,026	25.0	16,815	24.7
Wright State	502	14,600	29.1	16,626	33.1
Kent State	694	20,283	29.2	23,174	33.4
Youngstown State	392	11,577	29.5	13,683	34.9
Bowling Green	569	16,940	29.8	17,877	31.4
Shawnee State	120	3,625	30.2	3,988	33.2
Akron	651	20,206	31.0	24,722	38.0
Ohio University	710	22,125	31.2	21,363	30.1
Toledo	620	19,906	32.1	22,253	35.9
Weighted Average		26.8		29.3	

All Full-Time Faculty

	Full-Time Faculty Headcount	All Terms Student FTE		Fall Term Student Headcount	
		#	Ratio**	#	Ratio**
Cincinnati	1,249	24,650	19.7	29,566	23.7
Bowling Green	851	16,940	19.9	17,877	21.0
Miami	794	17,026	21.4	16,815	21.2
Kent State	921	20,283	22.0	23,174	25.2
Wright State	626	14,600	23.3	16,626	26.6
Toledo	836	19,906	23.8	22,253	26.6
Shawnee State	152	3,625	23.8	3,988	26.2
Cleveland State	510	12,289	24.1	15,438	30.3
Ohio State	2,242	54,666	24.4	54,551	24.3
Youngstown State	440	11,577	26.3	13,683	31.1
Akron	756	20,206	26.7	24,722	32.7
Ohio University	710	22,125	31.2	21,363	30.1
Weighted Average		23.6		25.8	

Central State does not report data to Ohio Universities Faculty Salary Survey therefore not included in this report.

** Ratios are calculated using all student data divided by Full-time faculty only (tenure line & all faculty), although some coursework is taught by adjuncts, teaching assistants, etc.

Source:

Student headcount & FTE data: OBR Statistical Profile - February 2010
Faculty: Ohio Universities Faculty Salary Survey, 2008-2009

Wright State University
Ohio Main Campuses
Faculty Comparative Data
FY 2007-08

DRAFT
2009 Update
Corrected 6/15/10

Full, Associate, & Assistant Professors

	Full, Associate, & Assistant Professor Headcount	All Terms Student FTE		Fall Term Student Headcount	
		#	Ratio**	#	Ratio**
Cincinnati	1,196	24,128	20.2	29,218	24.4
Cleveland State	507	12,110	23.9	15,370	30.3
Ohio State	2,263	54,432	24.1	53,408	23.6
Miami	668	16,699	25.0	16,406	24.6
Shawnee State	121	3,277	27.1	3,712	30.7
Wright State	491	14,088	28.7	16,108	32.8
Kent State	689	19,809	28.8	22,978	33.3
Bowling Green	609	17,744	29.1	18,653	30.6
Youngstown State	386	11,480	29.7	13,603	35.2
Ohio University	725	21,667	29.9	21,089	29.1
Akron	633	19,189	30.3	23,258	36.7
Toledo	586	19,145	32.7	21,303	36.4
Weighted Average		26.3		28.7	

All Full-Time Faculty

	Full-Time Faculty Headcount	All Terms Student FTE		Fall Term Student Headcount	
		#	Ratio**	#	Ratio**
Cincinnati	1,247	24,128	19.3	29,218	23.4
Bowling Green	876	17,744	20.3	18,653	21.3
Miami	764	16,699	21.9	16,406	21.5
Shawnee State	146	3,277	22.4	3,712	25.4
Wright State	626	14,088	22.5	16,108	25.7
Kent State	874	19,809	22.7	22,978	26.3
Cleveland State	518	12,110	23.4	15,370	29.7
Ohio State	2,271	54,432	24.0	53,408	23.5
Toledo	777	19,145	24.6	21,303	27.4
Akron	734	19,189	26.1	23,258	31.7
Youngstown State	429	11,480	26.8	13,603	31.7
Ohio University	726	21,667	29.8	21,089	29.0
Weighted Average		23.4		25.5	

Central State does not report data to Ohio Universities Faculty Salary Survey therefore not included in this report.

** Ratios are calculated using all student data divided by Full-time faculty only (tenure line & all faculty), although some coursework is taught by adjuncts, teaching assistants, etc.

Source:

Student headcount & FTE data: OBR Statistical Profile - February 2010
Faculty: Ohio Universities Faculty Salary Survey, 2007-2008

Wright State University
Ohio Main Campuses
Faculty Comparative Data
Fall 2006

DRAFT
2008 Update
9/30/08

Full, Associate, & Assistant Professors

	Full, Associate, & Assistant Professor Headcount	Student FTE		Student Headcount	
		#	Ratio**	#	Ratio**
Cincinnati	1,210	22,827.2	19	28,245	23
Cleveland State	516	10,420.8	20	15,119	29
Miami	728	16,061.2	22	16,198	22
Ohio State	2,227	50,252.2	23	52,512	24
Akron	625	16,983.1	27	22,476	36
Kent State	687	18,780.2	27	22,869	33
Toledo	591	16,182.7	27	19,448	33
Wright State	485	13,319.1	27	16,214	33
Youngstown State	385	10,623.9	28	13,279	34
Ohio University	746	20,651.5	28	20,610	28
Bowling Green	608	17,283.4	28	19,150	31
Shawnee State	115	3,387.1	29	3,897	34
Weighted Average		24		28	

All Full-Time Faculty

	Full-Time Faculty Headcount	Student FTE		Student Headcount	
		#	Ratio**	#	Ratio**
Cincinnati	1,263	22,827.2	18	28,245	22
Bowling Green	875	17,283.4	20	19,150	22
Cleveland State	522	10,420.8	20	15,119	29
Miami	800	16,061.2	20	16,198	20
Kent State	873	18,780.2	22	22,869	26
Toledo	739	16,182.7	22	19,448	26
Wright State	604	13,319.1	22	16,214	27
Ohio State	2,237	50,252.2	22	52,512	23
Shawnee State	143	3,387.1	24	3,897	27
Akron	704	16,983.1	24	22,476	32
Youngstown State	426	10,623.9	25	13,279	31
Ohio University	749	20,651.5	28	20,610	28
Weighted Average		22		25	

Central State does not report data to Ohio Universities Faculty Salary Survey therefore not included in this report.

** Ratios are calculated using all student data divided by Full-time faculty only (tenure line & all faculty), although some coursework is taught by adjuncts, teaching assistants, etc.

Source:

Student headcount data: OBR HEI Student Inventory Data, Fall 2006
Faculty: Ohio Universities Faculty Salary Survey, 2006-2007

Wright State University
Ohio Main Campuses
Faculty Comparative Data
Fall 2005

DRAFT
2008 Update
9/30/08

Full, Associate, & Assistant Professors

	Full, Associate, & Assistant Professor Headcount	Student FTE		Student Headcount	
		#	Ratio**	#	Ratio**
Cincinnati	1,194	22,637.8	19	27,908	23
Cleveland State	513	10,488.3	20	15,530	30
Miami	746	16,089.1	22	16,574	22
Ohio State	2,188	49,147.3	22	51,333	23
Akron	625	16,126.3	26	21,801	35
Youngstown State	386	10,356.0	27	12,920	33
Toledo	589	16,138.8	27	19,354	33
Ohio University	742	20,629.1	28	20,461	28
Bowling Green	609	17,273.9	28	19,091	31
Wright State	463	13,346.6	29	16,402	35
Kent State	662	19,508.9	29	23,874	36
Shawnee State	113	3,350.1	30	3,852	34
Weighted Average		24		28	

All Full-Time Faculty

	Full-Time Faculty Headcount	Student FTE		Student Headcount	
		#	Ratio**	#	Ratio**
Cincinnati	1,241	22,637.8	18	27,908	22
Miami	822	16,089.1	20	16,574	20
Cleveland State	526	10,488.3	20	15,530	30
Bowling Green	851	17,273.9	20	19,091	22
Toledo	752	16,138.8	21	19,354	26
Ohio State	2,199	49,147.3	22	51,333	23
Akron	697	16,126.3	23	21,801	31
Kent State	834	19,508.9	23	23,874	29
Wright State	554	13,346.6	24	16,402	30
Youngstown State	427	10,356.0	24	12,920	30
Shawnee State	138	3,350.1	24	3,852	28
Ohio University	744	20,629.1	28	20,461	28
Weighted Average		22		25	

Central State does not report data to Ohio Universities Faculty Salary Survey therefore not included in this report.

** Ratios are calculated using all student data divided by Full-time faculty only (tenure line & all faculty), although some coursework is taught by adjuncts, teaching assistants, etc.

Source:

Student headcount data: OBR HEI Student Enrollment Query, Fall 2005
Faculty: Ohio Universities Faculty Salary Survey, 2005-2006

Wright State University
Ohio Main Campuses
Faculty Comparative Data
Fall 2004

DRAFT
2008 Update
9/30/08

Full, Associate, & Assistant Professors

	Full, Associate, & Assistant Professor Headcount	Student FTE		Student Headcount	
		#	Ratio**	#	Ratio**
Cincinnati	1162	22,023.1	19	27,064	23
Cleveland State	517	10,800.4	21	15,881	31
Miami	766	16,566.2	22	17,590	23
Ohio State	2172	49,124.5	23	51,723	24
Akron	616	16,625.9	27	22,314	36
Youngstown State	383	10,545.6	28	13,166	34
Ohio University	736	20,301.9	28	20,143	27
Bowling Green	608	17,131.4	28	19,043	31
Wright State	461	13,318.3	29	16,351	35
Toledo	535	16,202.5	30	19,675	37
Shawnee State	108	3,272.4	30	3,807	35
Kent State	631	19,674.9	31	24,494	39
Weighted Average		25		29	

All Full-Time Faculty

	Full-Time Faculty Headcount	Student FTE		Student Headcount	
		#	Ratio**	#	Ratio**
Cincinnati	1193	22,023.1	18	27,064	23
Cleveland State	561	10,800.4	19	15,881	28
Miami	849	16,566.2	20	17,590	21
Bowling Green	841	17,131.4	20	19,043	23
Ohio State	2178	49,124.5	23	51,723	24
Toledo	695	16,202.5	23	19,675	28
Wright State	563	13,318.3	24	16,351	29
Shawnee State	135	3,272.4	24	3,807	28
Kent State	792	19,674.9	25	24,494	31
Akron	669	16,625.9	25	22,314	33
Youngstown State	422	10,545.6	25	13,166	31
Ohio University	737	20,301.9	28	20,143	27
Weighted Average		22		26	

Central State does not report data to Ohio Universities Faculty Salary Survey therefore not included in this report.

** Ratios are calculated using all student data divided by Full-time faculty only (tenure line & all faculty), although some coursework is taught by adjuncts, teaching assistants, etc.

Source:

Student headcount data: OBR HEI Student Enrollment Query, Fall 2004
Faculty: Ohio Universities Faculty Salary Survey, 2004-2005

Appendix A: Staffing Analysis Definitions

University Student/Faculty/Staff Populations

Student Headcount and FTE: Includes School of Medicine and Lake Campus. Source: Prior to Fall 2006 - SIS 232 (14th day). As of Fall 2006 Banner Enrollment Reports.

Full-Time Faculty, Unclassified Staff, Classified Staff: Includes School of Medicine. Prior to FY2007 budgeted FTE as of July 1st from RAPS. As of FY2007 Banner - HR.

AAUP Tenure Line: Headcount of Tenured and Tenure-track faculty from instructional accounts only. Excludes Dean's offices, SoM, and SoPP. Actual, not budgeted, numbers. Source: AAUP Faculty Salary Survey.

Budgeted Salary Expenditures as % of Total Gross Budget

Budgeted Faculty and Staff: Prior to 2006-07 budgeted FTE as of July 1st from RAPS. As of 2006-07 Banner - Finance. Total University excluding SoM, then SoM listed separately.

Ratios of Faculty/Staff FTE and Student FTE (School of Medicine not included)

Full-Time Faculty, Tenure-line Faculty, Non Tenure-line Faculty, Classified Staff and Unclassified Staff: Budgeted FTE as of July 1st. Dean's Offices are included within each college in the Fall Quarter Instructional Staffing Data.

Full-Time Faculty: Sum of Tenure-line and Non Tenure-line faculty.

Tenure-line Faculty: All Professors, Associate Professors, and Assistant Professors. Includes SoPP which does not actually grant tenure.

Non Tenure-line Faculty: All Instructors and Lectures.

Adjunct: Calculated using the SSN's of Adjuncts from HR and merged with HEI files for Course Credit Hours (CCH) taught. 12 CCH = 1 FTE.

Teaching Assistants: FTE is based on HEI files. Each unduplicated SSN equals .33 FTE.

Graphs and Charts: Comparison of Student FTE per Faculty/Staff FTE

All data is linked to Ratios of Faculty/Staff FTE and Student FTE. (see above)

Wright State University Main Campus as Compared to the Median for the 13 State Supported University Main Campuses

Source: OBR Performance Report (HEI data)

Ohio Main Campuses - Faculty Comparative Data

Student FTE and Headcount: Includes School of Medicine. Source: OBR Student Inventory Data (HEI data).

Faculty Headcount: Does not include School of Medicine. Faculty in instructional accounts only. Actual, not budgeted, numbers. Source: Ohio Universities Faculty Salary Survey.

Full, Associate & Assistant Professor Headcount: Does not include faculty in Dean's offices or other non-instructional accounts.

Full-Time Faculty Headcount: Includes Full/Associate/Assistant Professors, Instructors and Lectures.

Appendix B: Faculty Staffing Guidelines

TENURE LINE FACULTY

Full-time core faculty with terminal degrees who teach at the 300 level or above for more than half their teaching assignments, pursue active research agendas, and perform service that engages internal and external constituencies.

INSTRUCTORS, LECTURERS and VISITING FACULTY

Full-time faculty with advanced (but not necessarily terminal) degrees who--

- ♦ teach predominantly basic level undergraduate courses, such as ENG 101 and 102, basic language instruction, and beginning level mathematics along with routine service participation, or
- ♦ provide temporary replacement for tenure line faculty.

ADJUNCTS

Part-time faculty who--

- ♦ teach in specialty fields that have insufficient demand for a full-time faculty member, such as HPR or instruction in a specific musical instrument; or
- ♦ are working or retired professionals whose teaching in their fields of expertise provides valuable experiences for students; or
- ♦ provide temporary replacement for full-time faculty who resign, retire, or are on professional development, sick, or other leave; or
- ♦ provide temporary response to enrollment growth (three years or less); or
- ♦ provide teaching that is performed by GTAs at other institutions.