

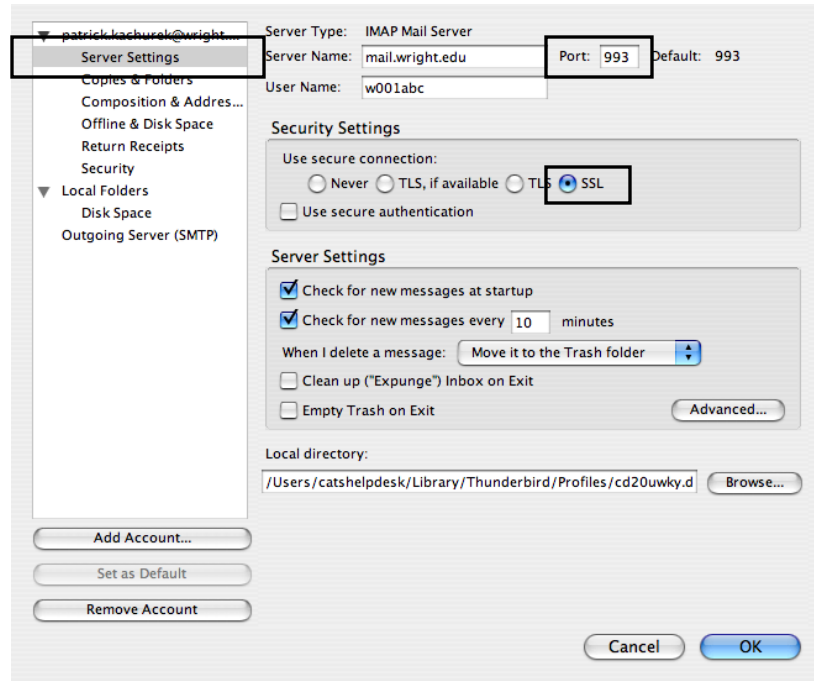
## Authenticated SMTP: Configuring Mozilla Thunderbird Mail

You can download Thunderbird from the Mozilla website < <http://www.mozilla.com/en-US/thunderbird/> >

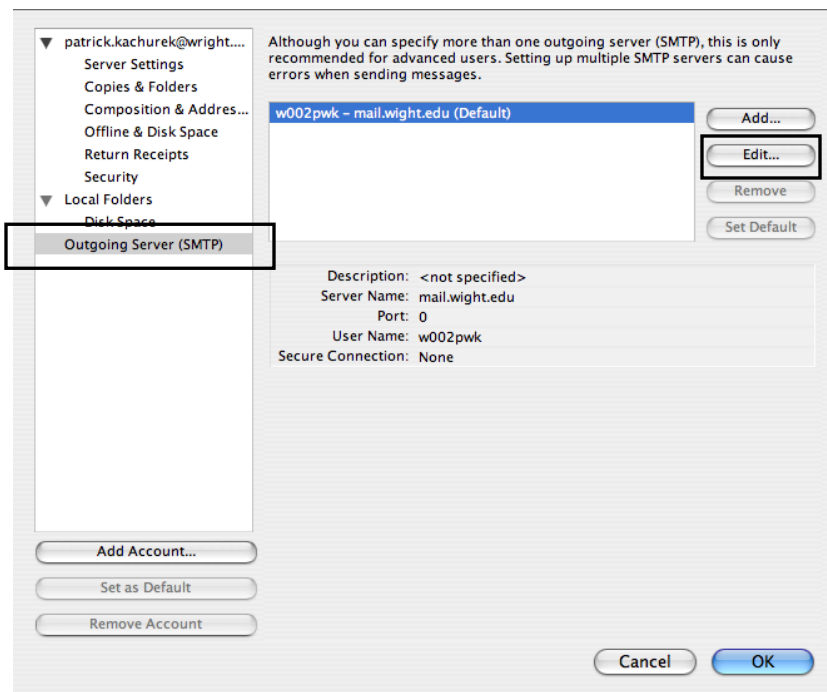
### Configuring New Thunderbird Secure IMAP Account

*(With IMAP, messages are retained on the WSU mail server, and folders you create to hold your mail are maintained on the server as well, and are accessible from anywhere you have Thunderbird installed. In case your computer crashes, and must be reformatted, e-mail is unaffected as it is not stored locally on your hard drive. This is the preferred setup for WSU e-mail accounts. Setup for a secure POP account follows.)*

1. When first launched, Thunderbird begins a **New Account Setup** wizard asking you which type of account you would like to setup. Select **Email account** (the default), then click **Continue**.
2. On the **Identity** window, enter your name as you wish it to appear in the **From:** field in your e-mail, and then enter your e-mail address. Click **Continue**.
3. On the **Server Information** window, select **IMAP** and then enter **mail.wright.edu** in both the **Incoming Server:** and **Outgoing Server:** fields. Click **Continue**.
4. On the **User Names** window, enter your **CAMPUS username (e.g., w001abc)** in both the **Incoming User Name:** and **Outgoing User Name:** fields (*NOTE: By default, Thunderbird will provide an example username in these fields, such as **john.doe**. Make sure to delete the information in these fields and enter your CAMPUS username instead*). Click **Continue**.
5. Give the account a name, such as “WSU Mail” in the **Account Name** field (this is just a label to identify this account from others that can be created in Thunderbird; by default, Thunderbird uses your e-mail address to identify the account). Click **Continue**.
6. Click **Done** to exit the Account Wizard. You may be asked if you wish to use Thunderbird as your default mail application. Click **Yes**.
7. You will be asked to enter your password for the mail server. Enter your **CAMPUS account password** and click **OK**. Your folders and mail should be imported into the Thunderbird mail window, with folders showing on the left side of the main window.
8. At the top of the Thunderbird main window, click on the **Tools** menu, then **Account Settings**.
9. Click on **Server Settings** on the left side of the window.
10. On the right side of the window, select the **SSL** option for the **Use secure connection:** field. Leave the **Use Secure Authentication** checkbox **UNCHECKED**. The Port number at the top of this window should change to **993**. If it does not, enter **993** into the **Port:** field.



11. Click on **Outgoing Server (SMTP)** on the left side of the window.
12. Click to select the default outgoing server, then click the **Edit** button on the right.



13. In the Settings window, select the **SSL** option at the bottom-right of the window; the Port number at the top should change to **465**. If it does not, enter **465** into the **Port** field. Make sure

the other settings are as shown (with your CAMPUS username in the **User Name:** field). Click OK. Click OK to dismiss the previous window.

The image shows a 'Settings' dialog box for a mail account. It is divided into two main sections: 'Settings' and 'Security and Authentication'.  
In the 'Settings' section, there is a 'Description:' field, a 'Server Name:' field containing 'mail.wright.edu', and a 'Port:' field containing '465' with a 'Default: 465' label next to it.  
In the 'Security and Authentication' section, the 'Use name and password' checkbox is checked. Below it is a 'User Name:' field containing 'w001abc'. Underneath that is the 'Use secure connection:' section with four radio button options: 'No', 'TLS, if available', 'TLS', and 'SSL'. The 'SSL' option is selected and highlighted with a black box.  
At the bottom of the dialog are 'Cancel' and 'OK' buttons.

### Configuring New Thunderbird Secure POP Account

*(With POP, messages are downloaded off the mail server and into your Inbox on the computer you are using to check your email. No folders are stored on the mail server, so no backup of your e-mail occurs on the server. If your computer crashes and needs to be reformatted, e-mail stored on your computer would be lost.)*

- 1.) Follow steps 1 and 2 in setting up an IMAP account, above.
- 2.) On the Server Information window, select POP instead of IMAP for the incoming server.
- 3.) On step 10, enter **995** for the port number instead of **993**.
- 4.) Follow the rest of the steps outlined above for setting up an IMAP account.

### Configuring Thunderbird Secure IMAP or POP Accounts: Current Users

If you are currently using Thunderbird as your e-mail client with either an IMAP or POP account, make sure your settings reflect the change to using SSL for connecting to the mail server. Follow steps 8 - 13 in

the procedure for setting up a new secure Thunderbird IMAP account, at the top of this document. If you are configuring POP, type in **995** instead of **993** on step 10.